

PLEASE CHECK WWW.MOLEX.COM FOR LATEST PART INFORMATION

Part Number: [0877159921](#)

Status: **Active**

Overview:

Description: 1.00mm (.039") Pitch, Edge Card Connector, 200 Circuits, Nylon 4/6 Glass-filled, Black Housing, Phosphor Bronze, 0.76µm (30µ") Gold (Au) Plating, with Plastic Pegs, 3.00mm (.118") Solder tail, Lead Free

Agency Certification

CSA LR19980

General

Product Family Edge Card Connectors
Series 87715
Component Type Edgecard to PCB
Overview edge_card_connectors
Product Name Edge Card

Physical

Circuits (Loaded) 200
Circuits (maximum) 200
Circuits Detail All Signal
Durability (mating cycles max) 50
Entry Angle Vertical (Top Entry)
Flammability 94V-0
Keying to Mating Part Yes
Material - Plating Mating Gold
Material - Plating Termination Tin
PC Tail Length (in) 0.118 In
PC Tail Length (mm) 3.00 mm
PCB Locator Yes
PCB Retention Yes
PCB Thickness Recommended (in) 0.093 In
PCB Thickness Recommended (mm) 2.40 mm
Packaging Type Tray
Pitch - Mating Interface (in) 0.039 In
Pitch - Mating Interface (mm) 1.00 mm
Pitch - Term. Interface (in) 0.039 In
Pitch - Term. Interface (mm) 1.00 mm
Plating min: Mating (µin) 30
Plating min: Mating (µm) 0.76
Polarized to Mating Part Yes
Temperature Range - Operating -55°C to +85°C
Termination Interface: Style Through Hole

Electrical

Current - Maximum per Contact 1.1A
Voltage - Maximum 50V AC (RMS)/DC

Solder Process Data

Lead-free Process Capability Wave Capable (TH only)
Process Temperature max. C 260

Material Info

Reference - Drawing Numbers

Packaging Specification PK-87715-212
Product Specification PS-87715-200

EU RoHS

**ELV and RoHS
Compliant**

REACH SVHC

Not Reviewed

Halogen-Free

Status

Not Reviewed

China RoHS



**Need more information on product
environmental compliance?**

Email productcompliance@molex.com
For a multiple part number RoHS Certificate of
Compliance, [click here](#)

Please visit the [Contact Us](#) section for any
non-product compliance questions.

Search Parts in this Series

87715Series

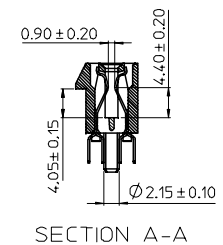
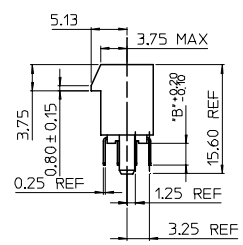
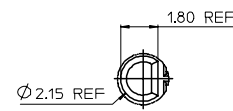
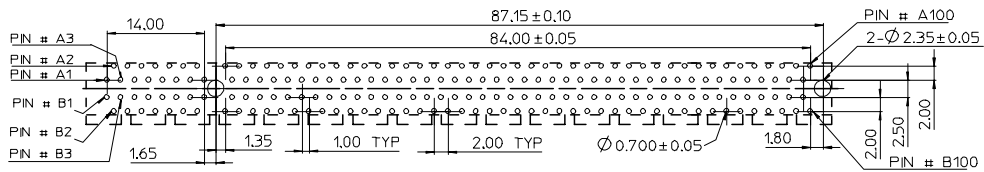
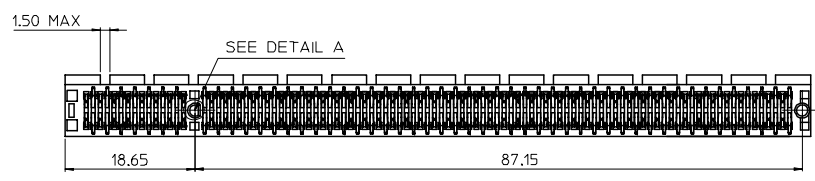
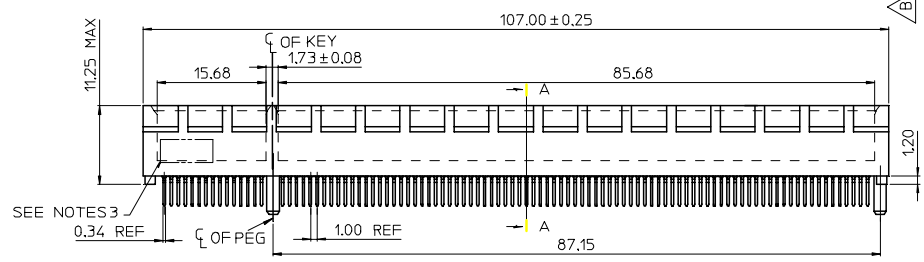
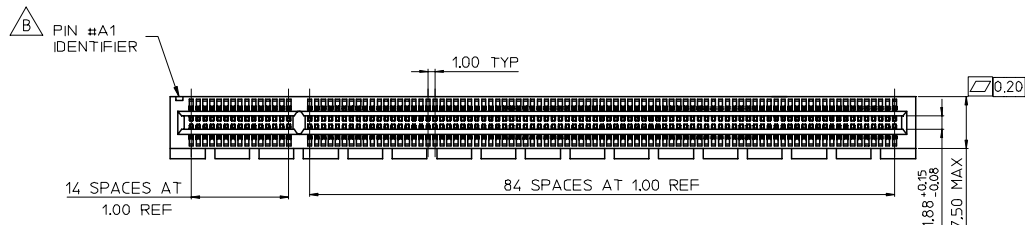
Mates With

1.0mm Thick Memory Module

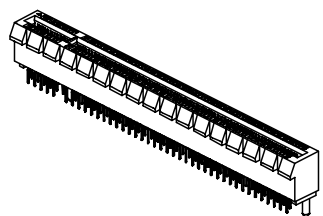
This document was generated on 06/04/2010

PLEASE CHECK WWW.MOLEX.COM FOR LATEST PART INFORMATION

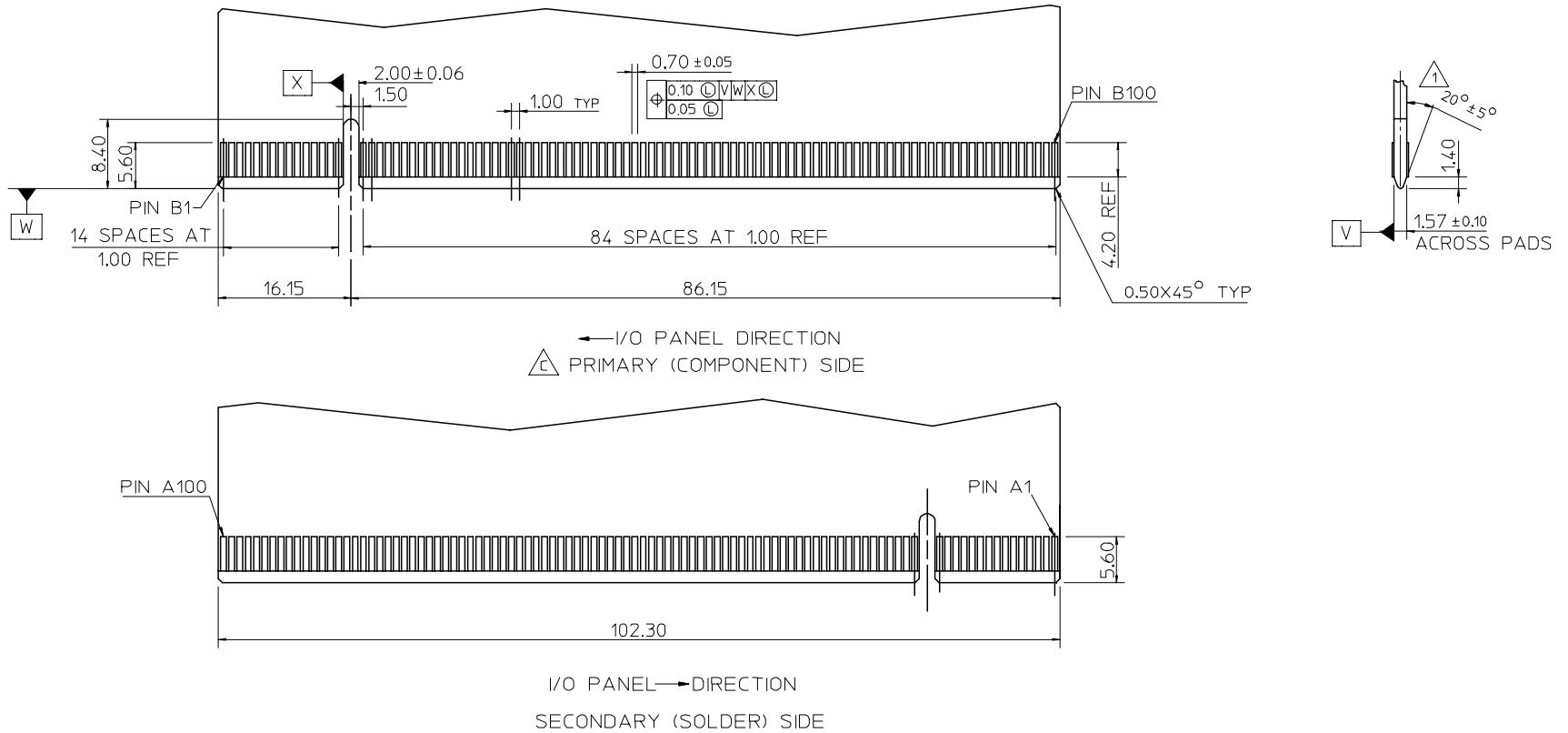
MOLEX P/N	CIRCUIT SIZE	HOUSING MATERIAL	HOUSING COLOR	TERMINAL MATERIAL	CONTACT PLATING	SOLDERTAIL PLATING	DIM 'B'
87715-9920	200	NYLON46	BLACK	PHOSPHOR BRONZE	GOLD 30 MICROINCH	100 MICRONCH TN OVER NICKEL OVERALL	2.54
87715-9921							3.00



- NOTES:**
- MATERIALS:
 - 1-1.HOUSING:SEE TABLE, GLASS FIBER FILLED, UL94V-0, COLOR:SEE TABLE
 - 1-2.CONTACT:SEE TABLE
 - PLATING:
 - 2-1.CONTACT AREA:SEE TABLE
 - 2-2.SOLDER TAIL:SEE TABLE
 - 2-3.UNDER PLATING:SEE TABLE
 - DATE CODE:TO BE PRINTED
 - PRODUCT SPECIFICATION REFER TO PS-87715-200
 - PACKAGING SPECIFICATION REFER TO PK-87715-212
 - TEST SUMMARY:REFER TO TS-87715-212
 - LEAD-FREE AND ROHS COMPLIANT PRODUCT



DRAWING ERROR EC NO: SH2007-0602 2007/02/14 DRWN:ALL IN 2007/02/14 CHKD: APPR:WWSCHANG 2007/02/14	QUALITY SYMBOLS ▽=0 ◻=0	GENERAL TOLERANCES (UNLESS SPECIFIED)		DIMENSION STYLE MM ONLY	SCALE	DESIGN UNITS METRIC	THIRD ANGLE PROJECTION	
			mm	INCH	DRAWN BY TOM	DATE 2005/03/13	TITLE 1.00 PITCH EDGE CARD 200 PIN VERT DIP CONN	
		4 PLACES	± ---	± ---	CHECKED BY ALLEN LIN	DATE 2005/03/13	MOLEX MOLEX INCORPORATED	
		3 PLACES	± ---	± ---	APPROVED BY WILSON CHANG	DATE 2005/03/13	DOCUMENT NO. SD-87715-212	SHEET NO. 1 OF 2
		2 PLACES	± 0.25	± ---	MATERIAL NO. SEE TABLE			
		1 PLACE	± 0.25	± ---	SIZE THIS DRAWING CONTAINS INFORMATION THAT IS PROPRIETARY TO MOLEX INCORPORATED AND SHOULD NOT BE USED WITHOUT WRITTEN PERMISSION			
		ANGULAR ± 3 °		DRAFT WHERE APPLICABLE MUST REMAIN WITHIN DIMENSIONS				



NOTES :
 △ CHAMFER EDGES MUST BE FREE OF CUTTING BURRS.

SEE SHEET 1 EC NO: SH2007-0602 DRWN: ALL IN CHKD: APPR: WWSCHANG	2007/02/14 2007/02/14 2007/02/14	QUALITY SYMBOLS	GENERAL TOLERANCES (UNLESS SPECIFIED)		DIMENSION STYLE MM ONLY		SCALE 1:1	DESIGN UNITS METRIC	THIRD ANGLE PROJECTION		
		$\nabla = 0$ $\square = 0$	mm	INCH	DRAWN BY TOM	DATE 2005/03/13	TITLE △ 1.00 PITCH EDGE CARD 200 PIN VERT DIP CONN				
					CHECKED BY ALLEN LIN	DATE 2005/03/13					
						APPROVED BY WILSON CHANG	DATE 2005/03/13	MOLEX INCORPORATED DOCUMENT NO. SD-87715-212 SHEET NO. 2 OF 2			
						MATERIAL NO. SEE TABLE					
			DRAFT WHERE APPLICABLE MUST REMAIN WITHIN DIMENSIONS		THIS DRAWING CONTAINS INFORMATION THAT IS PROPRIETARY TO MOLEX INCORPORATED AND SHOULD NOT BE USED WITHOUT WRITTEN PERMISSION						