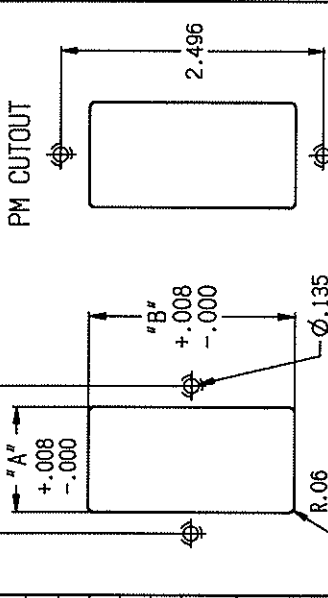
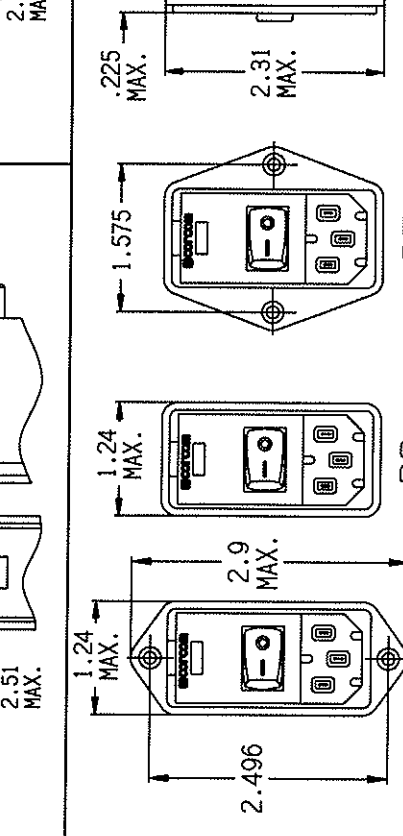
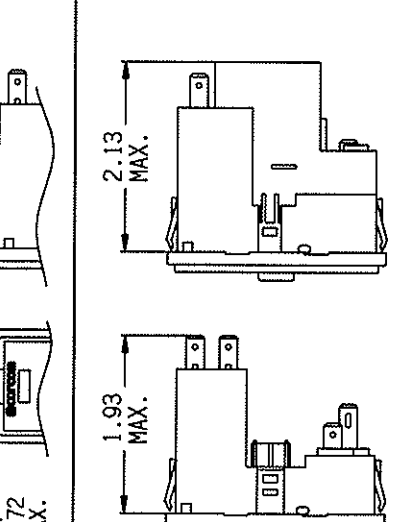


PE CUTOUT

PM CUTOUT



NOTE: FOR SWAP-IN APPLICATIONS, THE A SIDES MUST HAVE A .020 R. ON INSTALLATION SIDE.



* FOR PANEL THICKNESS OF 0.031" - 0.079" ONLY. USE 2.213 FOR PANEL THICKNESS OF 0.083" - 0.114"

RECOMMENDED PANEL CUTOUTS

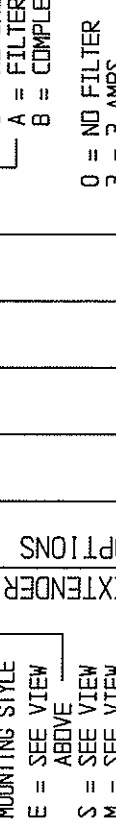
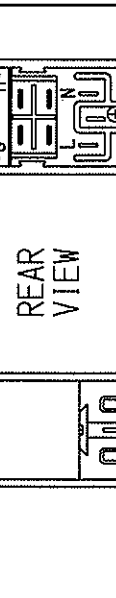
STYLE	DIMENSION 'A'		DIMENSION B	
	UNSHIELDED	SHIELDED	UNSHIELDED	SHIELDED
PS	1.06	1.12	2.201 *	*
PSL	1.12		2.201 *	*
PE	1.12	1.12	2.201 *	*
PM	1.06	1.12	2.13	
PSC	1.06	1.12	2.52	
PSJ	1.06	1.12	2.6	

MINIMUM INSERTION LOSS IN dB LINE TO GROUND IN 50 OHM CIRCUIT

CURRENT RATING	FREQUENCY MHz			
	0.15	0.5	10/30	
3 AMP	H MODELS	0.15	0.5	
	6 AMP	H MODELS	0.15	0.5
		10 AMP	H MODELS	0.15
3 AMP			S MODELS	12
	6 AMP		S MODELS	12
		10 AMP	S MODELS	12

MINIMUM INSERTION LOSS IN dB LINE TO LINE IN 50 OHM CIRCUIT

CURRENT RATING	FREQUENCY MHz			
	0.15	0.5	10/30	
3 AMP	H MODELS	0.15	0.5	
	6 AMP	H MODELS	0.15	0.5
		10 AMP	H MODELS	0.15
3 AMP			S MODELS	12
	6 AMP		S MODELS	12
		10 AMP	S MODELS	12



UNSHIELDED "A" SHIELD "B" SHIELD

UNSHIELDED

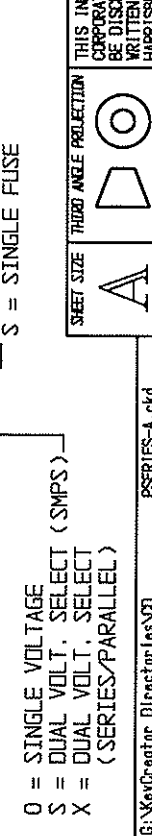
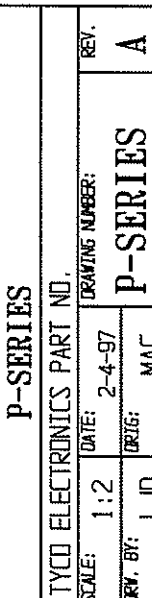
UNFILTERED



REAR VIEW

REAR VIEW

REAR VIEW



CONVERSION CLIP FOR SINGLE FUSE APPLICATIONS

CONVERSION CLIP FOR SINGLE FUSE APPLICATIONS

CONVERSION CLIP FOR SINGLE FUSE APPLICATIONS

MOUNTING STYLE
 E = SEE VIEW ABOVE
 S = SEE VIEW
 M = SEE VIEW
 O = NONE
 C = FN260
 J = J SERIES
 L = L SERIES

EXTENSOR
 O = NONE
 S = INTERCONNECTION BLOCK
 H = MEDICAL FILTER
 S = GENERAL PURPOSE

SWITCH
 O = BLANK
 S = DOUBLE POLE SINGLE THROW
 O = SINGLE VOLTAGE
 S = DUAL VOLT. SELECT (SMPS)
 X = DUAL VOLT. SELECT (SERIES/PARALLEL)

NO SHIELD
 FILTER SHIELD
 COMPLETE SHIELD

NO FILTER
 3 = 3 AMPS
 6 = 6 AMPS
 X = 10 AMPS

NO FILTER
 INTERCONNECTION BLOCK
 MEDICAL FILTER
 GENERAL PURPOSE

DUAL FUSE
 SINGLE FUSE

Tyco Electronics
 CUSTOMER DRAWING
 P-SERIES

CORCOB PRODUCTS, 620 S. BUTTERFIELD RD., HUNDELEIN IL 60060
 TYCO ELECTRONICS PART NO.
 SCALE: 1:2 DATE: 2-4-97
 DRW. BY: LJD DRIG: MAC
 DRAWING NUMBER: P-SERIES
 REV. A

SPECIFICATIONS - NONFILTERED MODELS

HIPOT RATING (ONE MINUTE)
 LINE TO GROUND: 1500 VAC
 LINE TO LINE: 1450 VDC
 OPERATING FREQUENCY: 50/60 Hz
 RATED VOLTAGE: 120/250 VAC
 RATED CURRENT: 10A @ 120 VAC
 10A @ 250 VAC

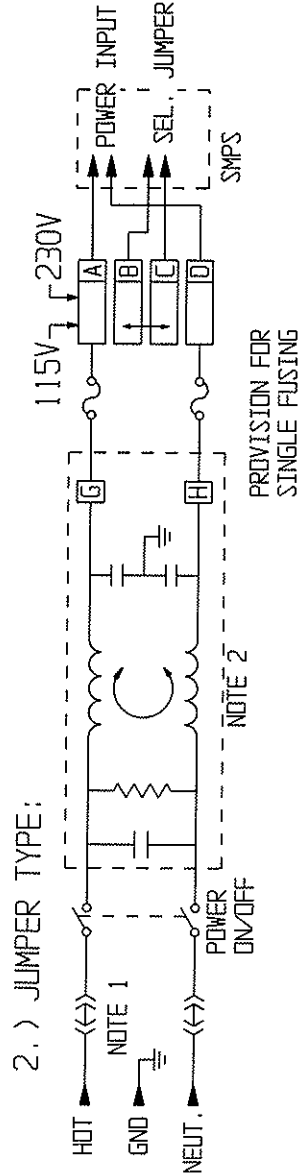
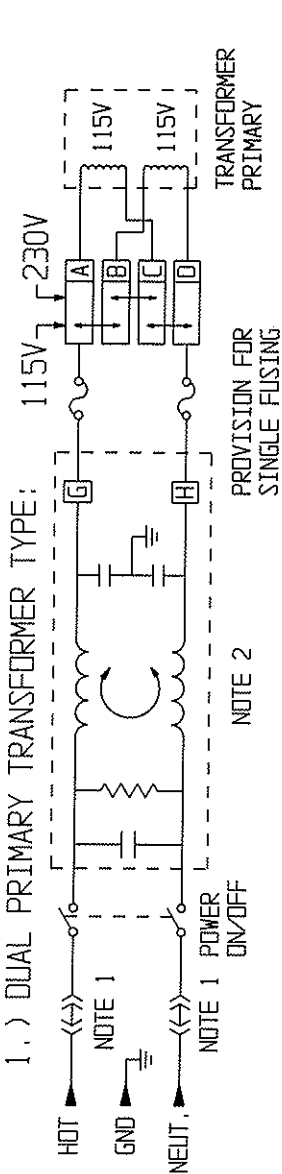
OPERATING VOLTAGES:
 SELECTABLE OR FIXED: 115/230 VAC
 FUSEHOLDER: ACCEPTS 1 OR 2 FUSES
 1/4" x 1-1/4" OR 5 x 20mm

SPECIFICATIONS - FILTERED MODELS

MAXIMUM LEAKAGE CURRENT, EACH LINE TO GROUND
 @ 120 VAC 60Hz: H MODELS 2µA
 S MODELS 0.25mA
 @ 250 VAC 50Hz: H MODELS 5µA
 S MODELS 0.50mA

HIPOT RATING (ONE MINUTE)
 LINE TO GROUND: 1500 VAC
 LINE TO LINE: 1450 VDC
 OPERATING FREQUENCY: 50/60 Hz
 RATED VOLTAGE: 120/250 VAC
 RATED CURRENT: 3, 6 & 10 AMP
 MODELS AVAILABLE

OPERATING VOLTAGES:
 SELECTABLE OR FIXED: 115/230 VAC
 FUSEHOLDER: ACCEPTS 1 OR 2 FUSES
 1/4" x 1-1/4" OR 5 x 20mm

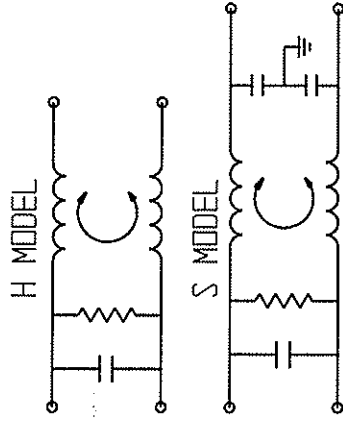


NOTE 1: JUMPERS ARE REQUIRED IF A FILTER OR INTERCONNECTION MODULE IS NOT USED.
 NOTE 2: LOCATION OF OPTIONAL FILTER, JUMPERS ARE REQUIRED IF A FILTER OR INTERCONNECTION MODULE IS NOT USED.

GENERAL NOTES:
 CONVERSION CLIP PROVIDED ON FUSEHOLDER FOR SINGLE FUSE MODELS.
 SWITCH: DOUBLE INSULATED RATED FOR 10,000 OPERATIONS AT FULL LOAD.
 51 AMP INRUSH CAPABILITY.
 TERMINALS: 0.187" x 0.032" FASTON TABS

SAFETY ORGANIZATIONS

THIS FILTER HAS BEEN FORMALLY RECOGNIZED, CERTIFIED OR APPROVED BY THE LISTED AGENCY. THEREFORE, ALL TEST/REQUIREMENTS SPECIFIED IN THE LATEST REVISION OF THE FOLLOWING AGENCY STANDARDS HAVE BEEN MET:



Tyco Electronics
 CORCOR PRODUCTS, 620 S. BUTTERFIELD RD. MUNDELEIN IL 60090

CUSTOMER DRAWING
P-SERIES

TYCO ELECTRONICS PART NO.

SCALE: NA	DATE: 2/4/97	DRAWING NUMBER: P-SERIES	REV. A
DRW. BY: LJD	DRG: MAC		