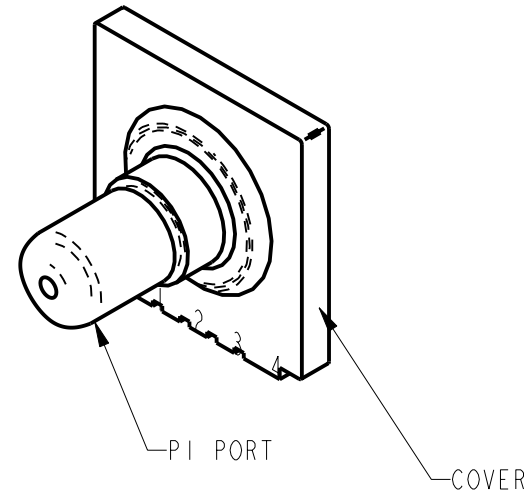
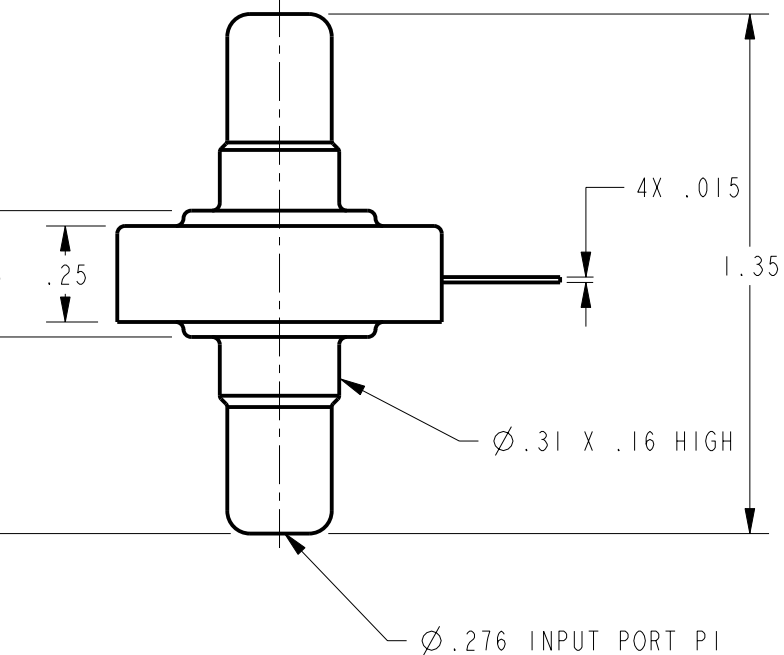
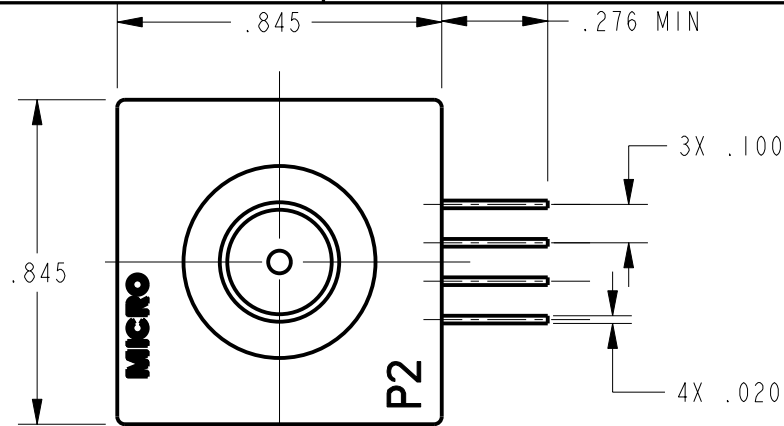


**GENERAL OPERATING CHARACTERISTICS**  
(ELECTRICAL PERFORMANCE AT 10.0±0.01 VDC EXCITATION, 25°C)

PARAMETERS	PRESSURE RANGES (H <sub>2</sub> O)	MIN	TYP	MAX	UNITS
NULL OFFSET	ALL	-2	0	+2	MV
NULL SHIFT $\nabla 5$ 0° $\leftarrow$ 25°C $\rightarrow$ 50°		-1.2		+1.2	
P2 > P1 F.S.O. $\nabla 3$ (FULL SCALE OUTPUT)	0 TO 07 D & G	26	28	30	MV
P2 > P1 SENSITIVITY PER IN. H <sub>2</sub> O	0 TO 07 D		1.5		
F.S.O. SHIFT $\nabla 5$ 0° $\leftarrow$ 25°C $\rightarrow$ 50° AT 10 VDC AT 2mA	ALL		NONE	± 3.5	%F.S.O.
P2 > P1	0 TO 07 D			± 3.0	
P1 > P2	0 TO 07 D			± 1.5	
LINEARITY (BESL)					
REPEATABILITY & HYSTERESIS				± 0.25	
STABILITY OVER 1 YEAR				± 1.5	
EXCITATION VOLTAGE	ALL		10	16	VDC
INPUT RESISTANCE			6.3K		OHMS
(P2 > P1) (P1 > P2) OVERPRESSURE	0 TO 07			140	IN. H <sub>2</sub> O
TEMPERATURE STORAGE OPERATE COMPENSATED	ALL				



CATALOG LISTING  
**176PC07HD33**

PAGE 1 OF 1

ISSUE

2

REPLACES

RELEASE NO. PR-22764

CHECK

CHECK

SAV

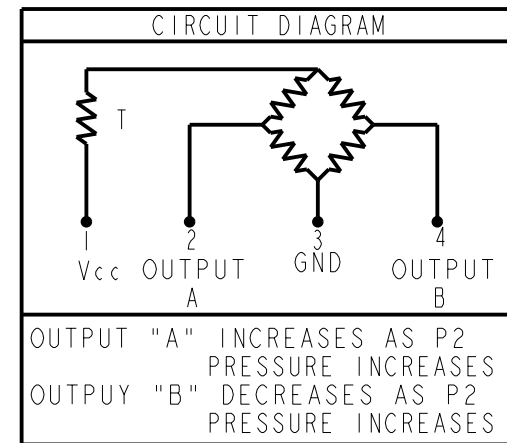
CHECK

PTC/CAD 2D  
DRAWN

D L T 17 JUL 02  
D L T 17 JUL 02

**NOTES**

- 1 - TERMINALS ARE PLATED FOR SOLDERING
- 2 - LIMIT SOLDERING TO 315°C MAX FOR 10 SECONDS MAX
- 3 F.S.O. IS THE ALGEBRAIC DIFFERENCE BETWEEN END POINTS (OUTPUT AND MINIMUM AND MAXIMUM PRESSURE)
- 4 - INPUT MEDIA: P1 - DRY GASES ONLY: CONNECTION SIDE OF SENSOR  
P2 - LIMITED ONLY TO THOSE MEDIA THAT WILL NOT ATTACK POLYESTER, SILICON OR SILICONE BASED ADHESIVE
- 5 TEMPERATURE ERROR IS CALCULATED WITH RESPECT TO 25°C AND EXPRESSES THE DEVIATION THAT COULD OCCUR AS TEMPERATURE IS RAISED OR LOWERED TO LIMITS INDICATED



THIRD ANGLE PROJECTION

SCALE 2 : 1

DO NOT SCALE PRINT

UNLESS OTHERWISE SPECIFIED TOLERANCES ARE

ONE PLACE (.0)	± .030
TWO PLACE (.00)	± .015
THREE PLACE (.000)	± .005
ANGLES	±

WEIGHT 2.0Z