

### Features

- $\phi$  500  $\mu\text{m}$  active area
- High QE for  $\lambda = 850\text{-}1064$  nm
- Low noise
- Low slope multiplication curve

### Description

Circular active area APD chip with IR enhanced sensitivity. Very low dark current due to guard ring diode. Metal can type hermetic TO5i package with clear glass window.

### Application

- Pulsed 1064 nm laser detection
- Laser range finding
- Fluorescence detection

### RoHS

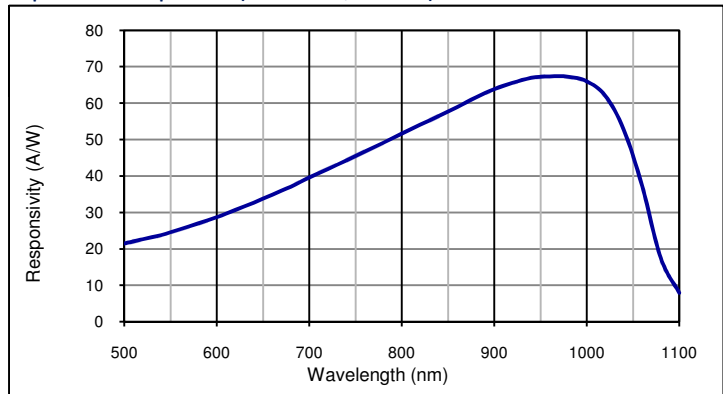
2002/95/EC



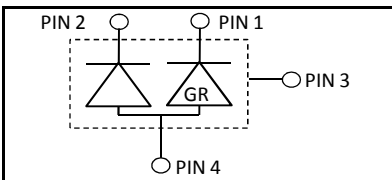
### Absolute maximum ratings

Symbol	Parameter	Min	Max	Unit
$T_{STG}$	Storage temp	-55	125	$^{\circ}\text{C}$
$T_{OP}$	Operating temp	-10	70	$^{\circ}\text{C}$
$M_{max}$	Gain ( $I_{PO} = 1$ nA)	1000		
$I_{PEAK}$	Peak DC current		0.25	mA

### Spectral response ( $M = 100$ ; $23^{\circ}\text{C}$ )



### Schematic



### Electro-optical characteristics @ $23^{\circ}\text{C}$

Symbol	Characteristic	Test Condition	Min	Typ	Max	Unit
	Active area			$\phi$ 500		$\mu\text{m}$
	Active area			0.2		$\text{mm}^2$
$I_D$	Dark current	$M = 100$		1.5	10	nA
$C$	Capacitance	$M = 100$		0.5		pF
	Responsivity	$M = 100$ ; $\lambda = 905$ nm		65		A/W
	Responsivity	$M = 100$ ; $\lambda = 1064$ nm		36		A/W
$t_R$	Rise time	$M = 100$ ; $\lambda = 1064$ nm; $R_i = 50 \Omega$		4		ns
$t_R$	Cut-off frequency	-3dB		90		MHz
$V_{BR}$	Breakdown voltage	$I_R = 2 \mu\text{A}$	220	300	550	V
	Temperature coefficient			3.3		V/K

#### European, International Sales:

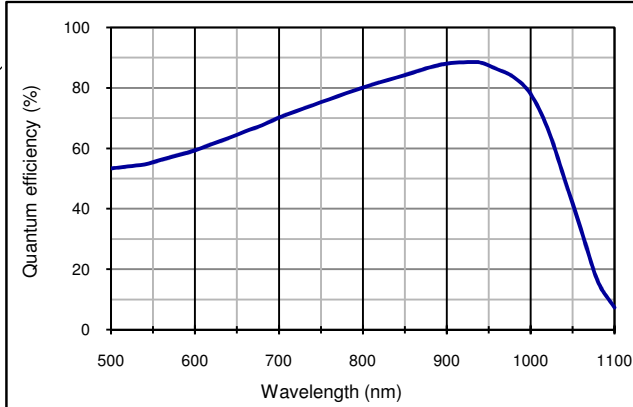
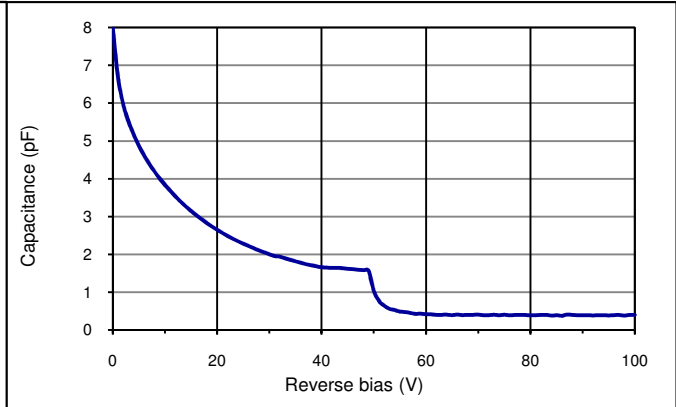
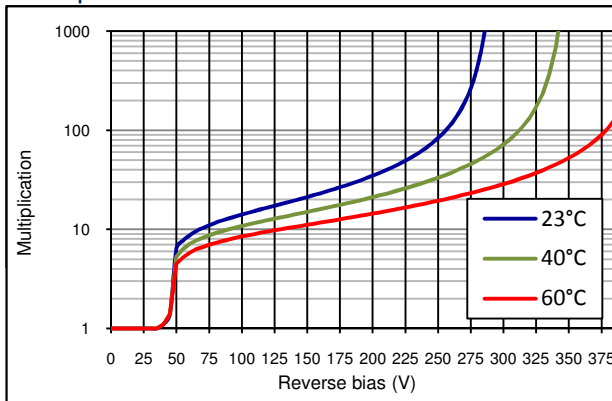
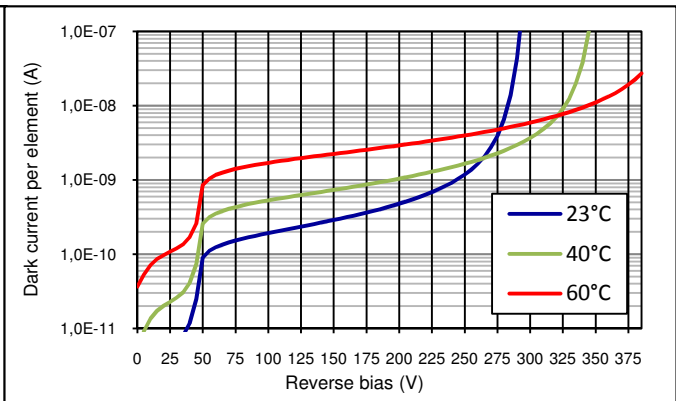
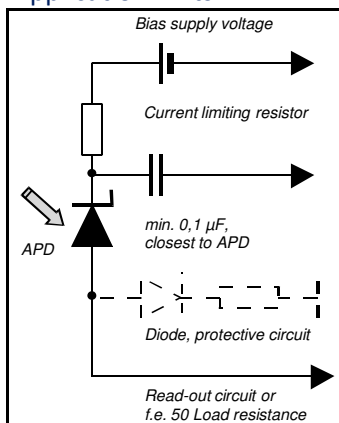


First Sensor AG  
 Peter-Behrens-Strasse 15  
 12459 Berlin  
 Germany  
 Phone: +49-30-6399-2399  
 Fax: +49-30-6399-23752  
 E-Mail: sales.opto@first-sensor.com

#### USA:



Pacific Silicon Sensor, Inc.  
 5700 Corsa Avenue #105  
 Westlake Village  
 CA 91362 USA  
 Phone: +1-818-706-3400  
 Fax: +1-818-889-7053  
 E-Mail: sales@pacific-sensor.com

**Quantum efficiency (23 °C)**

**Capacitance as fct of reverse bias (23 °C)**

**Multiplication as fct of reverse bias**

**Dark current as fct of reverse bias**

**Application hints:**


- Current should be limited by a protecting resistor or current limiting - IC inside the power supply
- For low light level applications blocking of ambient light should be used
- For high gain applications bias voltage should be temperature compensated
- Please consider basic ESD protection while handling
- Use low noise read-out - IC
- For further questions please refer to document "Instructions for handling and processing"

**Package dimension:**

Small quantities: Foam pad, boxed (12 cm x 16.5 cm)

Disclaimer: Due to our strive for continuous improvement, specifications are subject to change within our PCN policy according to JESD46C.

**European, International Sales:**


First Sensor AG  
 Peter-Behrens-Strasse 15  
 12459 Berlin  
 Germany  
 Phone: +49-30-6399-2399  
 Fax: +49-30-6399-23752  
 E-Mail: sales.opto@first-sensor.com

**USA:**


Pacific Silicon Sensor, Inc.  
 5700 Corsa Avenue #105  
 Westlake Village  
 CA 91362 USA  
 Phone: +1-818-706-3400  
 Fax: +1-818-889-7053  
 E-Mail: sales@pacific-sensor.com