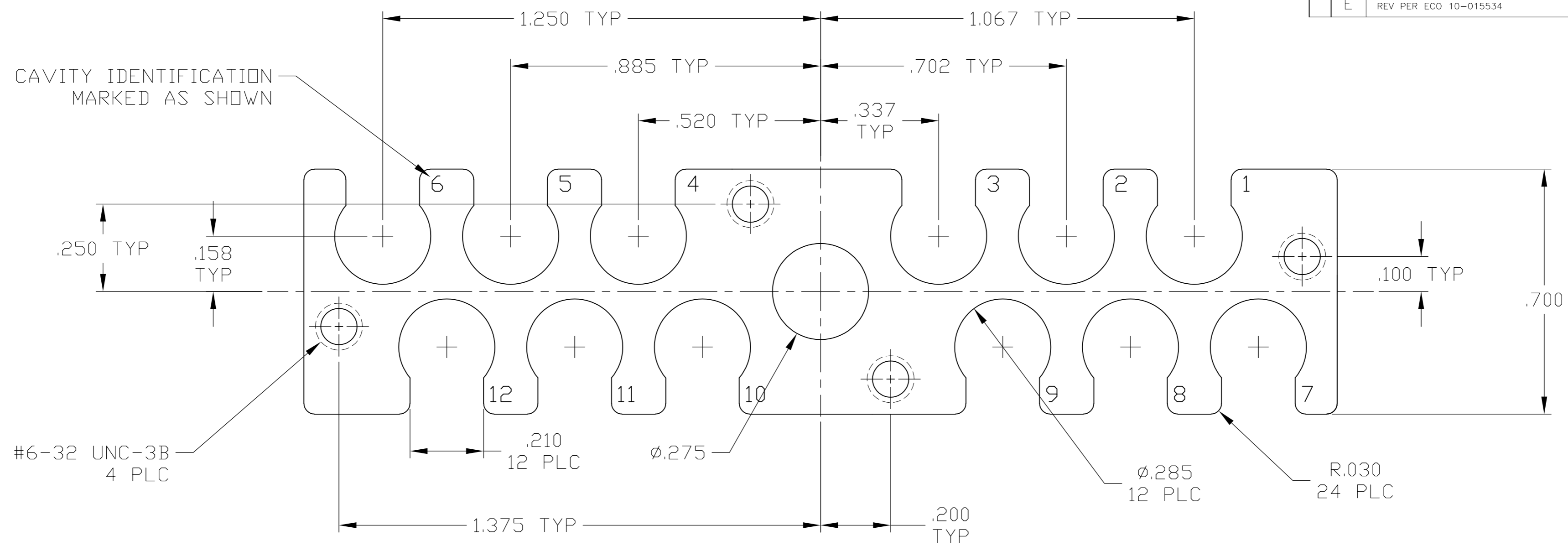


THIS DRAWING IS UNPUBLISHED. RELEASED FOR PUBLICATION - N/A .  
 © COPYRIGHT N/A BY TYCO ELECTRONICS CORPORATION. ALL RIGHTS RESERVED.

LOC	DIST	REVISIONS			
P	LTR	DESCRIPTION	DATE	DWN	APVD
-	-	REV PER ECO 10-015534	8-24-10	CT	DM

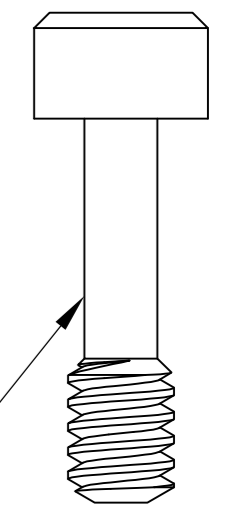


#6-32 UNC-3B  
4 PLC

CUSTOMER PART NO OR TE PART NO,  
(PER TABLE), TE LOGO AND DATE CODE  
MARKED IN APPROX AREA ON EITHER  
END OR SIDES

ORIENTATION OF SEAL BOOT PLATE FOR RECEPTACLE APPLICATIONS SHOWN  
SEE SHEET #2 FOR ORIENTATION FOR PLUG APPLICATIONS

#6-32 UNC-3A X .50 LONG  
CAPTIVE SCREW  
(QTY = 4)  
MAT'L: STAINLESS STEEL  
(SHIPPED UNASSEMBLED  
& PACKAGED SEPARATELY)



- 1 MAT'L: ALUMINUM ALLOY 6061-T6 OR DIE CAST PER ASTM B85.
- 2 FINISH: BLACK ANODIZE; HARD ANODIZED COAT .00150 MIN THK PER MIL-A-8625, TYPE III, CLASS 2.

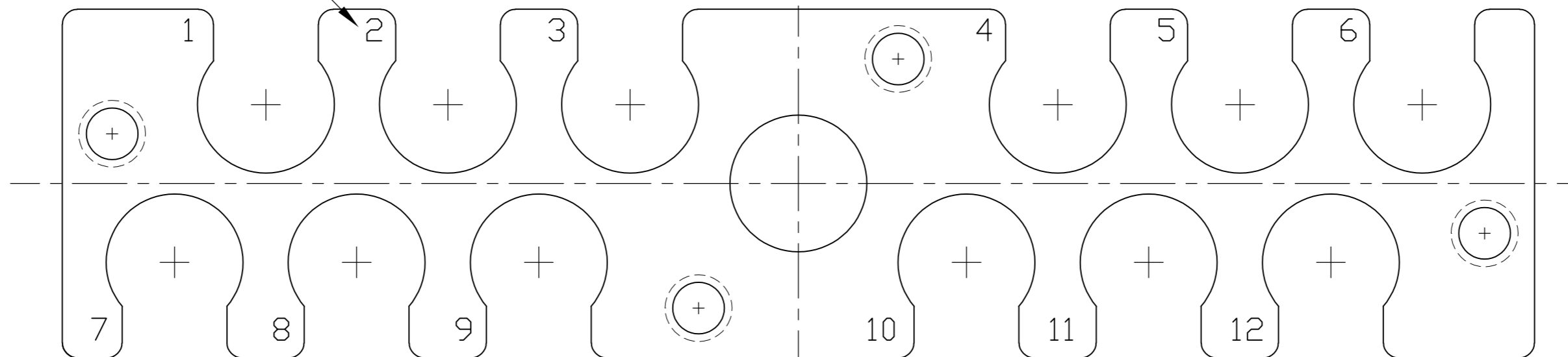
1996544-2	---	1996544-2
---	BACC10NJ1	1996544-1
MARKED TE PART NO	MARKED CUST PART NO	PART NO.

THIS DRAWING IS A CONTROLLED DOCUMENT.		DWN C.C.THOMAS 1-21-08	Tyco Electronics Corporation Harrisburg, PA 17105-3608	
DIMENSIONS: INCHES		CHK D.MILLER 1-21-08	NAME D.MILLER 1-21-08	
TOLERANCES UNLESS OTHERWISE SPECIFIED:		APVD D.MILLER 1-21-08	PRODUCT SPEC	
0 PLC ± -		APPLICATION SPEC		
1 PLC ± -		WEIGHT		
2 PLC ± -		A2 00779 C=1996544		
3 PLC ± .005		SCALE 2:1 SHEET 1 of 2 REV E		
4 PLC ± -		RESTRICTED TO		
ANGLES ± -		-		
FINISH		-		
-		-		
CUSTOMER DRAWING		-		

THIS DRAWING IS UNPUBLISHED. RELEASED FOR PUBLICATION - N/A .  
 © COPYRIGHT N/A BY TYCO ELECTRONICS CORPORATION. ALL RIGHTS RESERVED.

LOC		DIST		REVISIONS			
P	LTR	DESCRIPTION	DATE	DWN	APVD		
-	-	SEE SHEET 1	-	-	-		

CAVITY IDENTIFICATION  
MARKED AS SHOWN



ORIENTATION OF SEAL BOOT PLATE FOR PLUG APPLICATIONS

THIS DRAWING IS A CONTROLLED DOCUMENT.		DWN C.C.THOMAS 1-21-08	Tyco Electronics Corporation Harrisburg, PA 17105-3608	
DIMENSIONS: INCHES		CHK D.MILLER 1-21-08		
TOLERANCES UNLESS OTHERWISE SPECIFIED:		APVD D.MILLER 1-21-08	NAME SEAL BOOT RETENTION PLATE 12 POSITION, QUADRAX	
0 PLC ± - 1 PLC ± - 2 PLC ± - 3 PLC ± .005 4 PLC ± - ANGLES ± -		PRODUCT SPEC -	SIZE A2	CAGE CODE 00779
MATERIAL -		FINISH -	DRAWING NO C=1996544	RESTRICTED TO -
1		WEIGHT -	SCALE 2:1	SHEET 2 of 2
2		CUSTOMER DRAWING	REV E	