

TRACK (TR) CALIFIA LIGHTING PART

| PART # | LENGTH** | COLOR | EXAMPLE |
|--------|-------------------------------|------------------------|------------------------------|
| CTR | 24 = 2' 36 = 3' 48 = 4' | B = Black W = White | CTR-24-B = 2' Track in Black |



PRODUCT DETAILS

The Califa Track Systems are easy to modify or customize to fit your lighting needs. They are available in standard lengths and can easily utilize accessories to increase the length, fit corners, and decoratively hide unsightly wires. Available in black and white.

** 2' TRACK



** 3' TRACK



** 4' TRACK



POWER SUPPLIES FOR TRACK (TR):



Class 2 Power Supply 12W
Califa Lighting Part # - PS-1032

PRODUCT DETAILS
For hardwiring with track systems, this Power Supply is best Suited for use with single track segments with lower wattage luminaires.

| | |
|-----------------------|----------------------------------------------------------------------------------|
| AC Input | 100-240Vac 0.3A, 47-63Hz |
| DC Output | 24V/500mA MAXIMUM 12 WATTS |
| Operating Temperature | -30°C - 60°C |
| Peak Inrush | 10A @ 115V AC 20A @ 230V AC |
| Dimensions | L 3.35" (85.1mm) W 1.35" (35mm) H .91" (23mm) 6" (152mm) stripped wires |

Compliance



Class 2 Power Supply 40W
Califa Lighting Part # - PS-1033

PRODUCT DETAILS
For hardwiring with track systems, this Power Supply is best suited for use with multiple track segments with higher wattage luminaires.

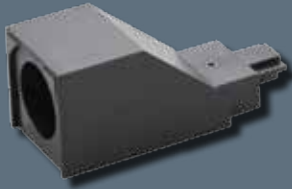
| | |
|-----------------------|---------------------------------------------------------------------------------|
| AC Input | 100-240V ac 0.5A, 50-60Hz |
| DC Output | 24V/1.67A MAXIMUM 40 WATTS |
| Operating Temperature | -30°C-70°C |
| Peak Inrush | 10A @ 115V AC 20A @ 230V AC |
| Dimensions | L 3.74" (95mm) W 2.76" (70mm) H 1.26" (32mm) 6" (152mm) stripped wires |

Compliance



TRACK (TR) ACCESSORIES

TRACK CONDUIT FEEDER



CALIFIA LIGHTING PART # – CTR-CF01

PRODUCT DETAILS

The Conduit Feeder allows conduit fed wires to remain hidden. Available in Black and White – please indicate preference on order. 3.0” (76.2mm) L x 1.3” (33mm) W x 1.3” (33mm) H.

TRACK LIVE END CONNECTOR WITH CANOPY



CALIFIA LIGHTING PART # – CTR-CP01

PRODUCT DETAILS

The Live End Connector with Canopy allows for a finished look while also hiding unsightly holes or wires. Available in Black or White – please indicate preference on order. 4.4” (111.8mm) L x 2.9” (73.7mm) W x 0.5” (12.2mm) H.

TRACK MINI CONNECTOR



CALIFIA LIGHTING PART #- CTR-ET01

PRODUCT DETAILS

The Mini Connector makes it possible to extend the standard length of Califia Track Systems. Available in Black and White – please indicate preference on order. 7.7” (43.2mm) L x .9” (22.9mm) W x 0.5”(11.4mm) H.

TRACK LIVE END FEEDER



CALIFIA LIGHTING PART # – CTR-EN01

PRODUCT DETAILS

The Live End Feeder allows for track to power connections. Available in Black and White – please indicate preference on order. 2.4” (61mm) L x .9” (22.9mm) W x 0.5” (11.4mm) H.

TRACK 90° L-TYPE CONNECTOR



CALIFIA LIGHTING PART # – CTR-EL01

PRODUCT DETAILS

The 90° L-Type Connector makes it possible to shape where you would like your track system to illuminate. Extend your track system at 90° angles using this L-Type Connector which extends power. 2.3” (58.9mm) L x 2.3” (58.9mm) W x .5” (11.4mm) H.

TRACK IN-LINE ON/OFF SWITCH



CALIFIA LIGHTING PART # – SW-1002 & SW-1003

PRODUCT DETAILS

The In-line On/Off switch allows for control of the power directly at the source. This product contains a mating connector for a Califia Track System and a mating connector for a Califia Lighting Power Supply. North American (SW-1002) and Euro (SW-1003) plug options. Switch box – 14” (356 mm) L x 6” (152 mm) H, L (including wiring) 78” (2000mm).