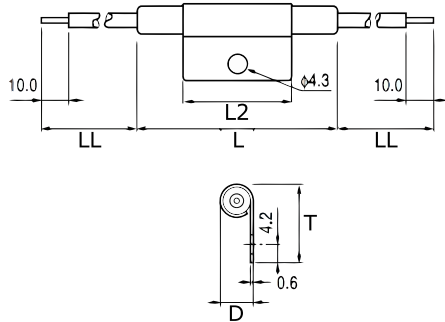


KEMET Part Number: TRS1-10MLR00V
(USEC10MLR00000)

KEMET, TRS, Thermal Reed Switch, Axial, 2.5C Temperature Accuracy, High Reliability, High-Speed Response, Long Operational Life, Excellent Environmental Durability, High Temperature Accuracy, 10°C, Make



General Information	
Series:	TRS
Type:	Thermal Reed Switch
Style:	Axial
Description:	Thermal Reed Switch
Features:	High Reliability, High-Speed Response, Long Operational Life, Excellent Environmental Durability, High Temperature Accuracy
Lead:	Cables
RoHS:	Yes

Dimensions	
D	7.65mm NOM
L	54mm NOM
L2	34mm NOM
T	18.8mm MAX
LL	200mm NOM

Packaging Specifications	
Packaging:	Rubberband Box
Packaging Quantity:	500
Weight:	8.5 g

Specifications	
Switching Temperature:	10C +/-2.5C
Temperature Range:	-20/+130°C
Contact Type:	Make
Voltage AC:	220 VAC MAX (Opening/Closing)
Current:	0.045 Amps AC MAX (Opening/Closing), 1 mAmps MIN (5VDC, Opening/Closing)
Resistance:	150 mOhms MAX (Contact Resistance)
Max Opening/Closing Power:	10 W (AC)
Max Opening/Closing Voltage:	220 V (AC)
Differential Temperature:	10C Maximum