

4

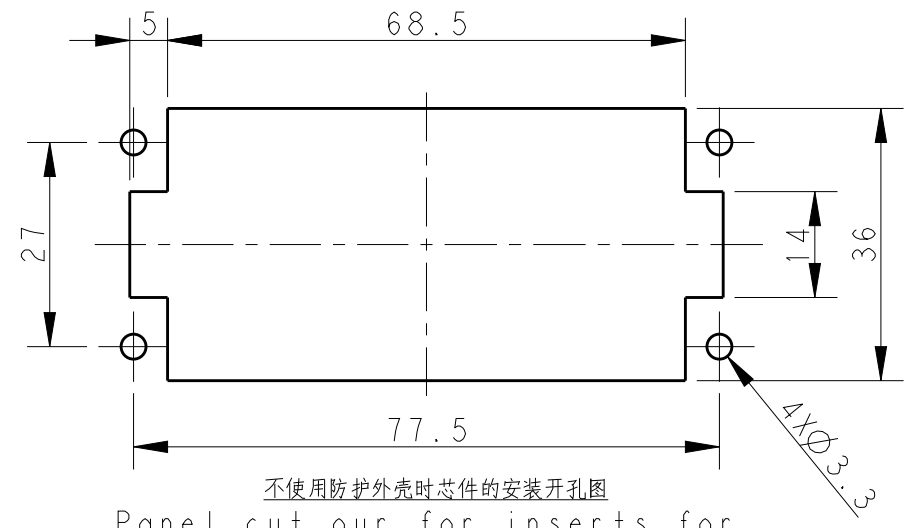
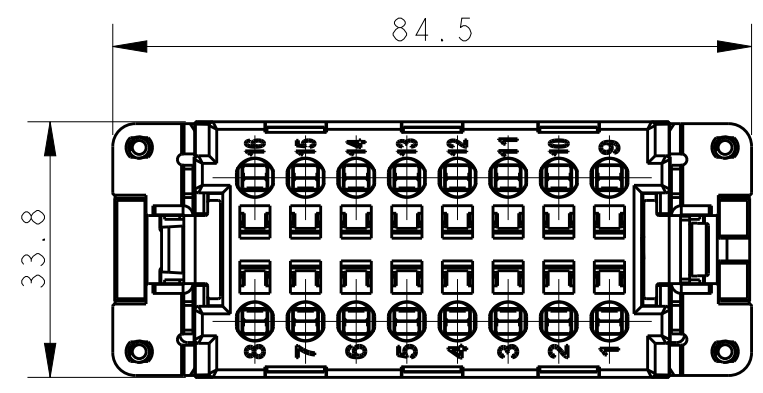
3

2

1

THIS DRAWING IS UNPUBLISHED. RELEASED FOR PUBLICATION 20
© COPYRIGHT 20 BY - ALL RIGHTS RESERVED.

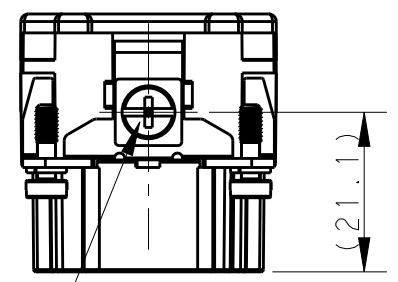
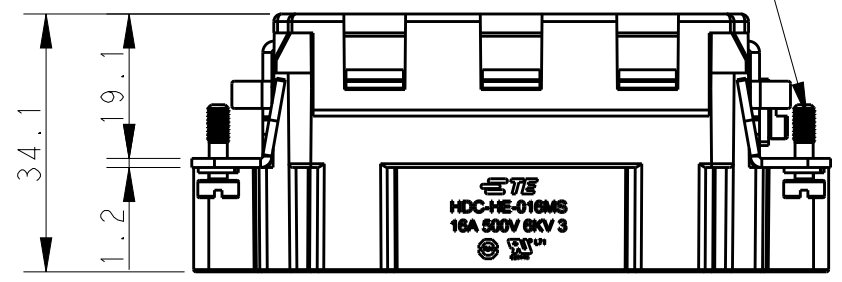
REVISIONS					
P	LTR	DESCRIPTION	DATE	DWN	APVD
A		INITIAL RELEASE	15APR2015	CY	CW
B		ECR-15-013759	09OCT2015	DW	CW



不使用防护外壳时芯件的安装开孔图
Panel cut out for inserts for use without hoods/housings

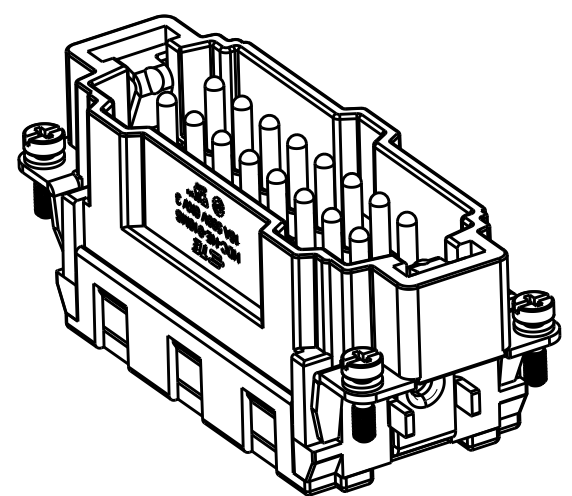
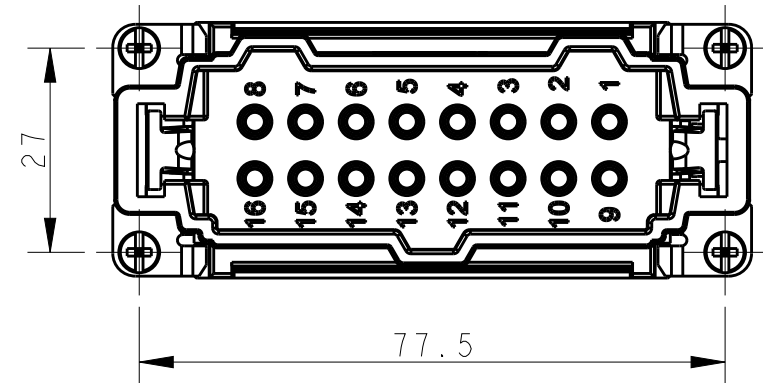
NOTES:
1. TECHNICAL CHARACTERISTICS:
INSULATION MATERIAL: PC
RATED VOLTAGE: 500V
RATED CURRENT: 16A
INSULATION RESISTANCE: $\geq 400M\Omega$
RATED IMPULSE VOLTAGE: 6KV
POLLUTION DEGREE: 3
FLAMMABILITY: UL94V-0
MATING CYCLES: 500 CYCLES
OPERATION TEMPERATURE: $-40^{\circ}C \sim +125^{\circ}C$
WIRE RANGE: $0.5mm^2 \sim 2.5mm^2$ (AWG20-AWG14)
CONTACT TYPE: SPRING CLAMP

4 X M3 screw, recommended tightening torque 0.5Nm




M4 screw, recommended tightening torque 1.2Nm

注释:
1. 技术参数:
绝缘材料: PC
额定电压: 500V
额定电流: 16A
绝缘电阻: $\geq 400M\Omega$
脉冲电压: 6KV
污染等级: 3
阻燃等级: UL94V-0
插拔次数: 500 次
工作温度: $-40^{\circ}C \sim +125^{\circ}C$
接线范围: $0.5mm^2 \sim 2.5mm^2$ (AWG20-AWG14)
接线类型: 弹片压接



HE-016-MS	T2040163101-000
DESCRIPTION	PART NUMBER

THIS DRAWING IS A CONTROLLED DOCUMENT.		DWN	Gino.Yao	15APR2015	 TE Connectivity	NAME	HE-016-MS			
DIMENSIONS:		CHK	Chris.Wang	15APR2015			PRODUCT SPEC	108-137044		
mm		APVD	Xiang.Xu	15APR2015				APPLICATION SPEC	114-137044	
TOLERANCES UNLESS OTHERWISE SPECIFIED:		MATERIAL					WEIGHT	SIZE	CAGE CODE	DRAWING NO
0 PLC \pm - 1 PLC \pm - 2 PLC \pm - 3 PLC \pm - 4 PLC \pm - ANGLES \pm -		-			-	A3	00779	C-T2040163101000	-	
-		-			-	Customer Drawing			SCALE	
-		-			-	-			1:1	
-		-			-	-			SHEET	
-		-			-	-			1 OF 1	
-		-			-	-			REV	
-		-			-	-			B	