

RM Cores (6295370121)

Part Number: 6295370121

95 RM CORE SET

RM (Rectangular Modulus) cores allow better shielding than E type geometries while also providing easier winding accessibility and better power dissipation than a pot core configuration. Fair-Rite's standard RM cores all have a solid center post and standard height, low profile and alternate materials are available upon request.

RM cores can be supplied with the center post gapped to a mechanical dimension or an A_L value.

[Catalog Drawing](#)
[3D Model](#)

Weight indicated is per pair or set.

Weight: 46 (g)

Dim	mm	mm tol	nominal inch	inch misc.
A	36.75	± 0.75	1.447	—
B	12.25	± 0.15	0.482	—
C	15.85	± 0.25	0.624	—
D	8.55	± 0.20	0.337	—
E	25.45	± 0.55	1.002	—
F	12.6	± 0.20	0.496	—
G	13.4	min	0.528	min
J	29.2	± 0.60	1.15	—

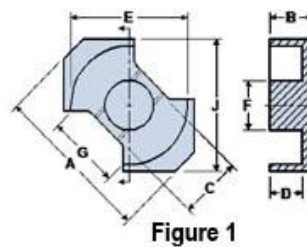



Figure 1

Chart Legend

$\Sigma l / A$: Core Constant, l_e : Effective Path Length, A_e : Effective Cross- Sectional Area, V_e : Effective Core Volume

A_L : Inductance Factor 

Explanation of Part Numbers: Digits 1 & 2 = product class and 3 & 4 = material grade.

Electrical Properties	
A_L (nH)	6360 ±25%
A_e (cm ²)	1.41
$\Sigma l / A$ (cm ⁻¹)	4.3
l_e (cm)	6.13
V_e (cm ³)	8.675
A_{min} (cm ²)	1.247

A_L value is measured at 1 kHz, B < 10 gauss.