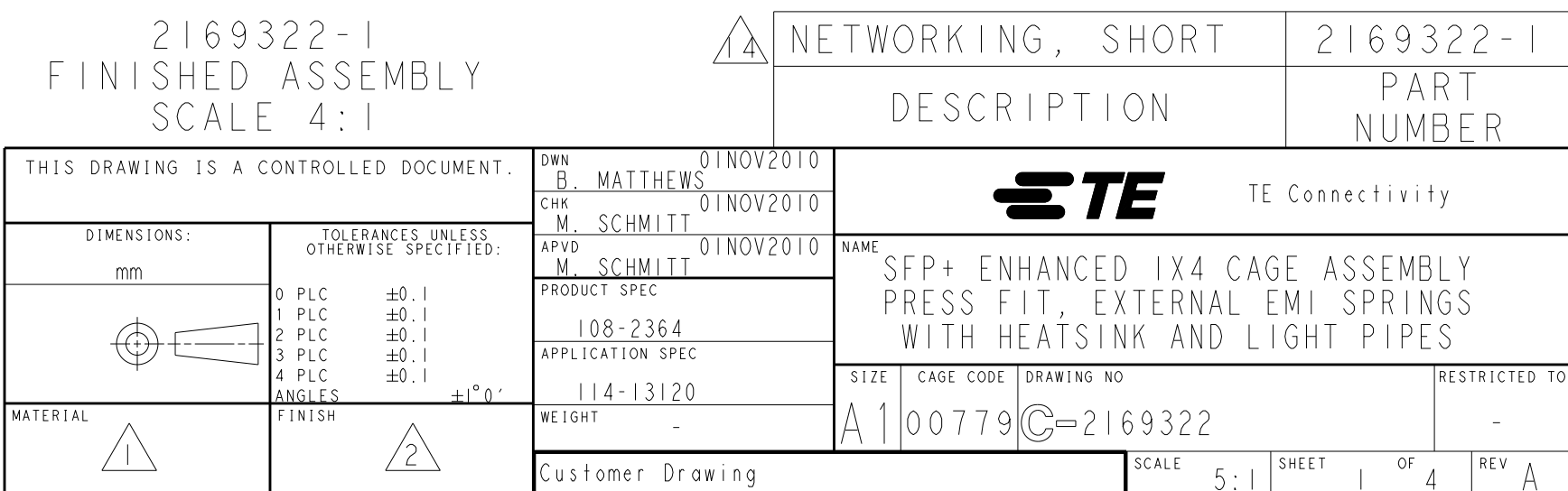
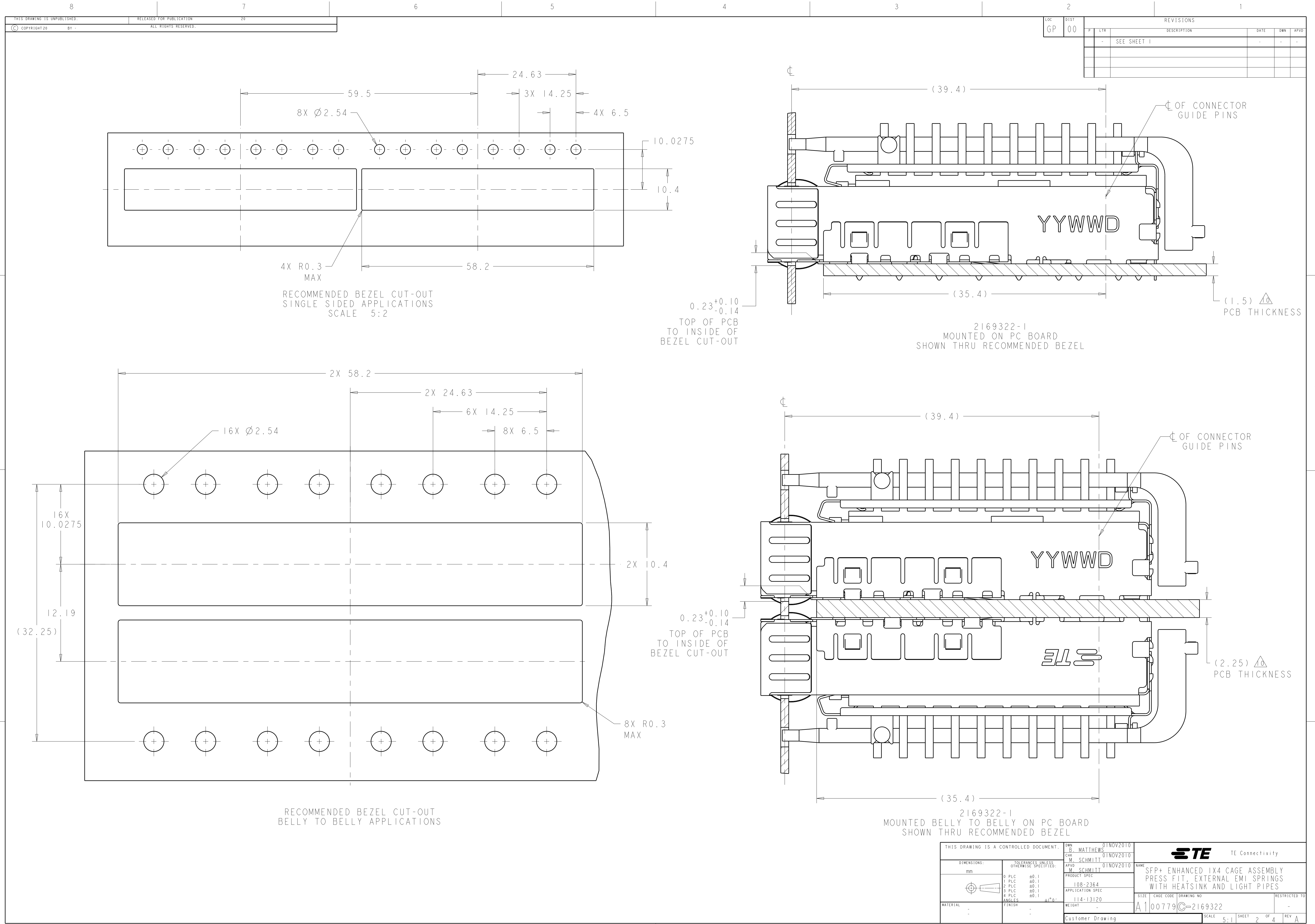
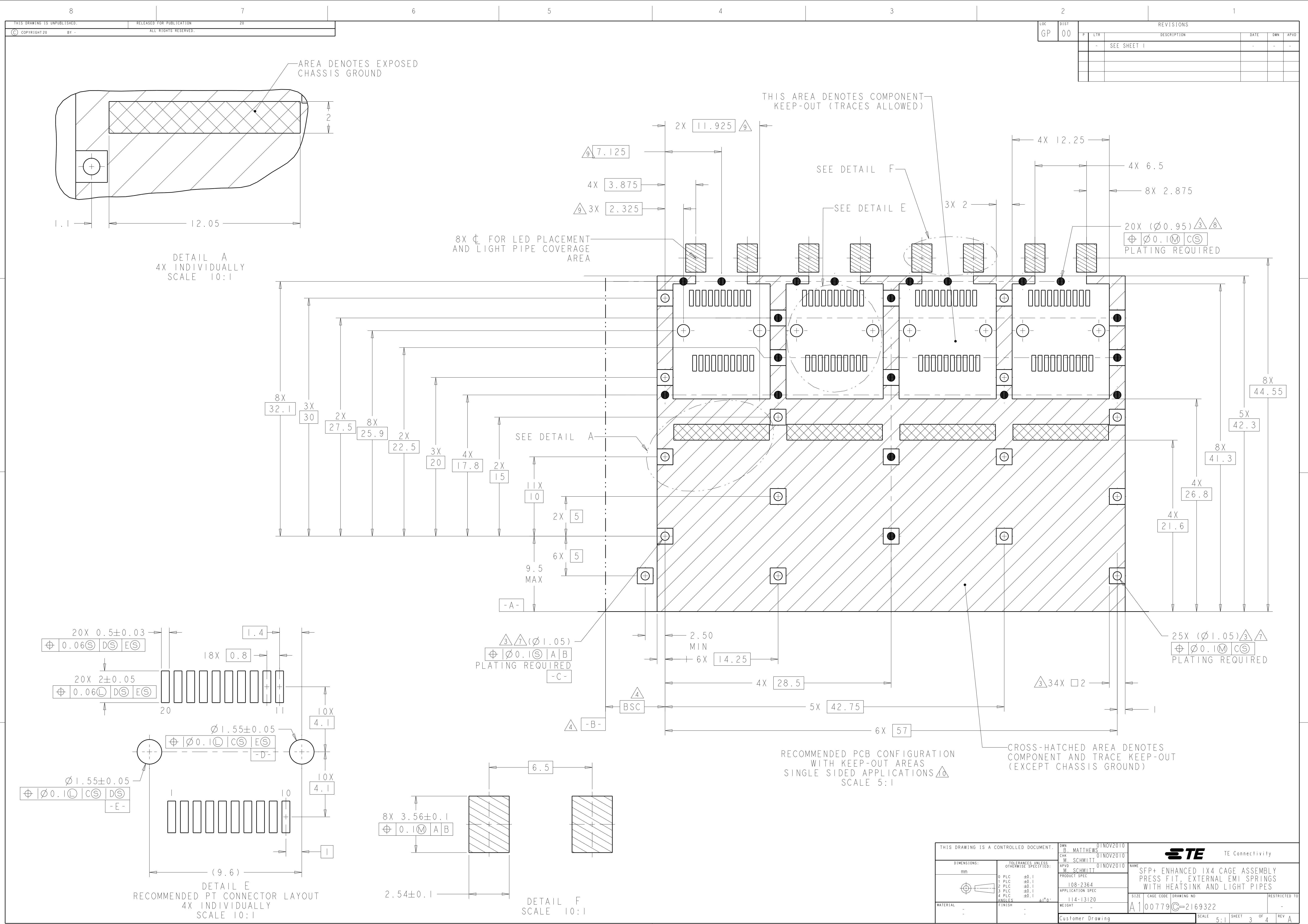


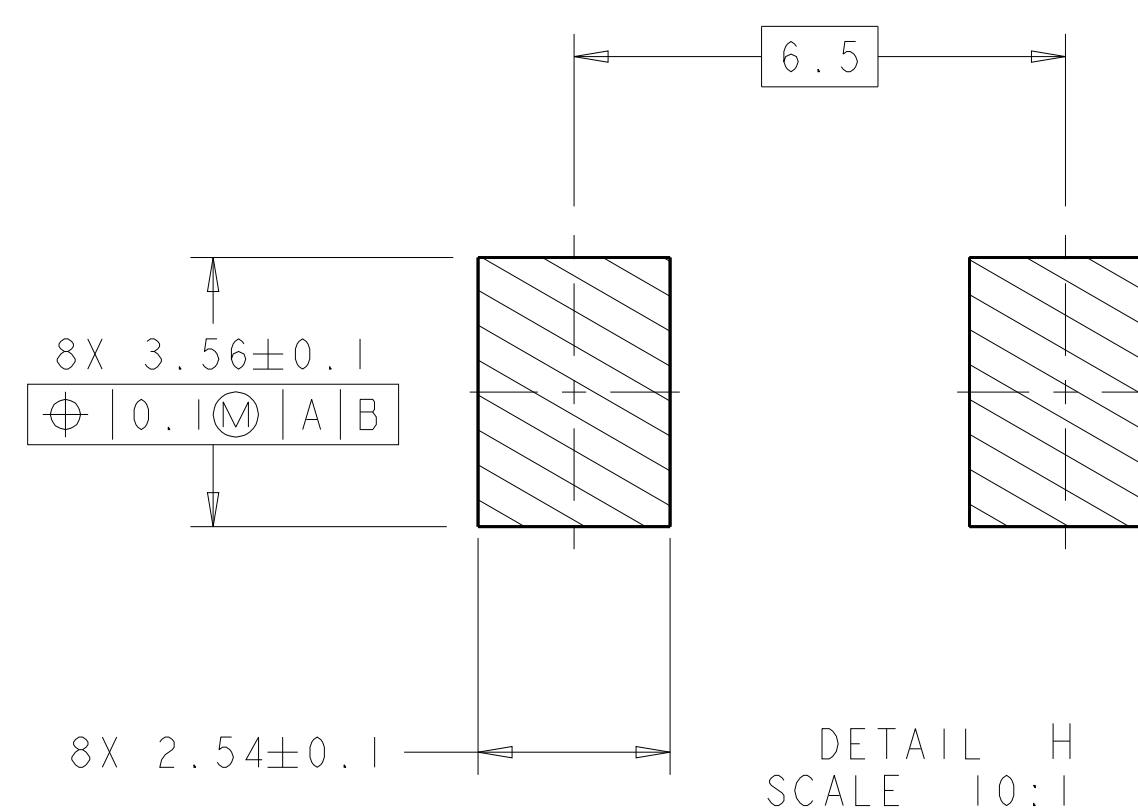
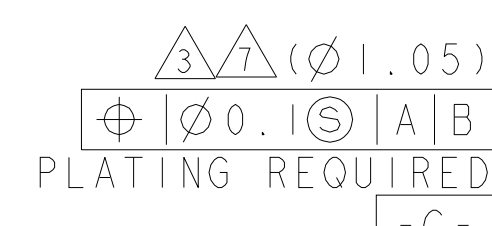
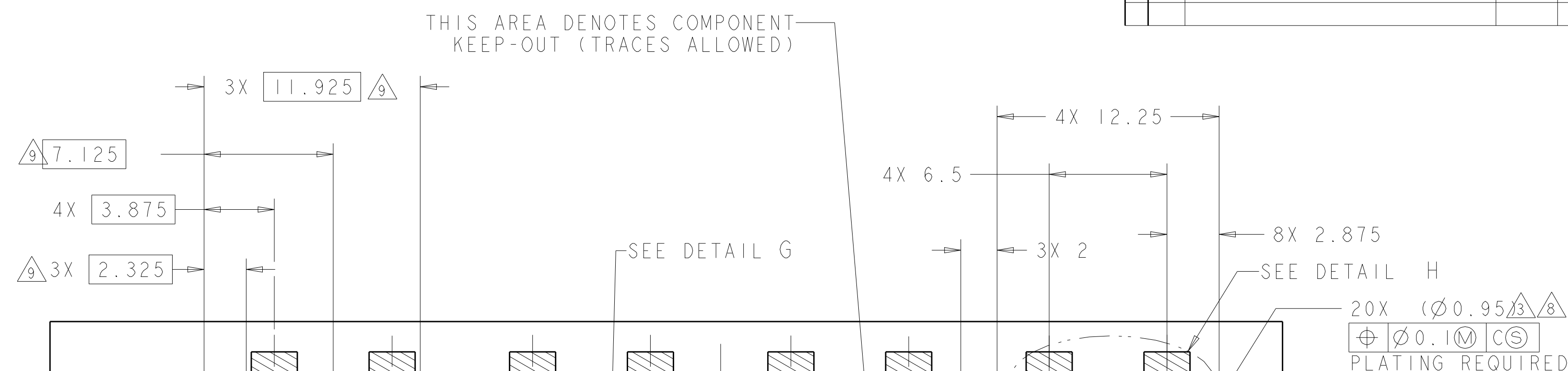
- 
- A detailed line drawing of a freight train flatcar. The car is loaded with a large quantity of long, cylindrical objects, possibly pipes or rods, which are stacked in multiple layers, reaching high above the car's roof. The objects are arranged in a somewhat regular pattern, with some standing vertically and others horizontally. The flatcar itself has a boxy, industrial design with visible rivets and structural details. On the side of the car, the letters 'YYWWD' are printed in a bold, sans-serif font. The car is shown from a side-on perspective, highlighting its length and the volume of the cargo. The drawing is a black and white line art, typical of technical illustrations or conceptual art.









THIS DRAWING IS A CONTROLLED DOCUMENT.		DWN B. MATTHEWS 01NOV2010	TE Connectivity	
DIMENSIONS:		CHK M. SCHMITT 01NOV2010		
mm		APVD W. SCHMITT 01NOV2010	NAME SFP+ ENHANCED 1X4 CAGE ASSEMBLY	
		PRODUCT SPEC	PRESS FIT, EXTERNAL EMI SPRINGS WITH HEATSINK AND LIGHT PIPES	
		108-2364		
		APPLICATION SPEC		
		114-13120		
MATERIAL		WEIGHT	SIZE CAGE CODE DRAWING NO	
-		-	A100779C=2169322	
FINISH		Customer Drawing	RESTRICTED TO	
-			SCALE 5:1 SHEET 3 OF 4 REV A	



—CROSS-HATCHED AREA DENOTES  
COMPONENT AND TRACE KEEP-OUT  
(EXCEPT CHASSIS GROUND)

THIS DRAWING IS A CONTROLLED DOCUMENT.		DWN B MATTHEWS	01NOV2010	 TE Connectivity	
		CHK M SCHMITT	01NOV2010		
		APP'D M SCHMITT	01NOV2010		
DIMENSIONS:		TOLERANCES UNLESS OTHERWISE SPECIFIED:		NAME SFP+ ENHANCED 1x4 CAGE ASSEMBLY PRESS FIT, EXTERNAL EMI SPRINGS WITH HEATSINK AND LIGHT PIPES	RESTRICTED TO
mm					
	0 PLC	±0.1	±1° 0'		
	1 PLC	±0.1			
	2 PLC	±0.1			
	3 PLC	±0.1			
	4 PLC	±0.1			
ANGLES					
FINISH				SIZE	CAGE CODE
-		-		A1	00779
MATERIAL		APPLICATION SPEC		DRAWING NO	
-		114-13120		C=2169322	
		WEIGHT		SCALE	SHEET
		Customer Drawing		5:1	A OF A
					REV Δ