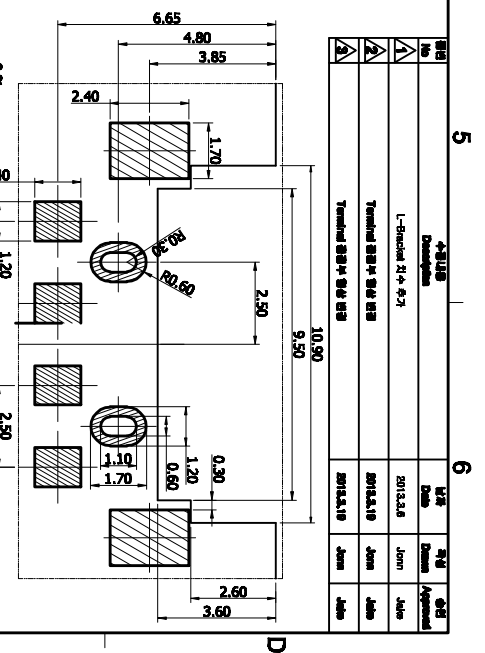
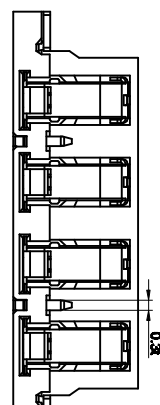
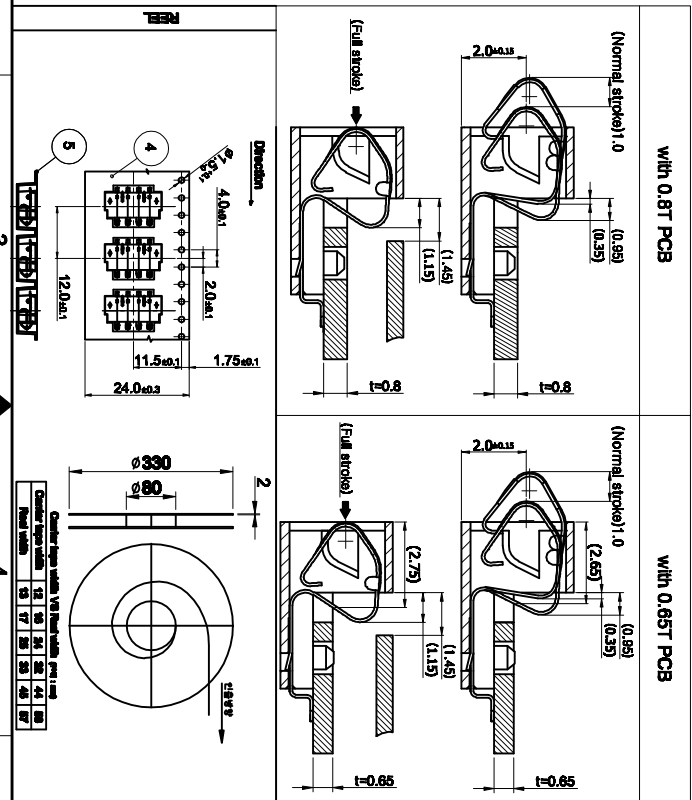


CTO dimensions

1	(★1) 15.0±0.05mm	6	(★5) 5.5±0.05mm
2	(★2) 3.80±0.05mm	7	(★6) 2.5±0.1mm
3	(★3) 12.5±0.05mm	8	(★7) 1.7±0.1mm
4	(★4) 12.9±0.05mm	9	(★8) 3.0±0.05mm



08	TOP TAPE	PS-PET	防湿テープ (AMBISTATS)
05	EMBOSS TAPE	PS	
04	L-BRACKET	BRASS	ニル-5n
03	T-BRACKET	BRASS	ニル-5n
02	TERMINAL	TIGI	ニル+Pd-Ni+Au
01	INSULATOR	ETFE	UL94V-0-BLACK

REV	DATE	REVISED BY	REVISED CONTENT
002	2013.12.5	01	AMBISTATS
001	2013.12.5	01	AMBISTATS

001	AMBISTATS	1/1
002	AMBISTATS	1/1

- Note -
1. otherwise tolerance: X:X = ±0.1 / X:XX = ±0.05
2. Coplanarity: Terminal 0.05mm.
3. Plating.
1) TERMINAL
Contact area: Ni0.5μm~1.5μm+Pd~Ni(μm) 0.3+Au0.05μm (Min)
SMD area: Ni0.5~1.5μm + Au0.05μm (Min)
Other: Ni0.5~1.5μm
2) L,T-BRACKET - Ni1~5μm + Sn2~7μm
4. () dimensions are reference.
5. ★ = C.T.Q dim.
& Do not contain any substances which are specified in (COA-Q149)

