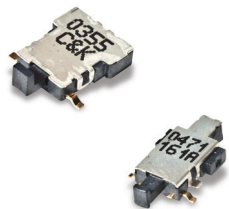


KSM Series Side Actuated Detect Switches



Features/Benefits

- Low profile – 1,5 mm
- Momentary, normally closed contact
- Gold contacts
- RoHS compliant and compatible

Typical Applications

- Automotive
- Position sensing switch
- Edge card reset switch
- Smart card presence switch detector
- DSL and fiber optic networks

Specifications

FUNCTION: Momentary action

CONTACT TYPE: SPST Normally closed

Mechanical

TRAVEL TO BREAK: KSM1131D LFG 0,35 ± 0,15 mm

KSM6161 LFG 0,5 ± 0,20 mm

TOTAL TRAVEL: KSM1131D LFG 1,25 ± 0,2 mm

KSM6161 LFG 1,92 ± 0,2 mm

SWITCHING FORCE:

KSM1131D LFG 0,15N ≤ F_{ce} ≤ 0,90 N

KSM6161 LFG 0,50N ≤ F_{ce} ≤ 0,90 N

OPERATING LIFE: KSM1131D LFG 50,000 cycles

KSM6161 LFG 200,000 cycles

Packaging

Switches are delivered on continuous tape, in reels of 2,000 pieces (KSM1131D LFG) and 1250 pieces (KSM6161 LFG)

Electrical

MAXIMUM POWER:

KSM1131D LFG

0.2 VA

MAXIMUM VOLTAGE:

24 VDC

MINIMUM VOLTAGE:

20 mV

MAXIMUM CURRENT DC:

50 mA

MINIMUM CURRENT DC:

1 mA

CONTACT RESISTANCE:

≤ 300 mΩ

KSM6161 LFG

1.0 VA

32 VDC

20 mV

50 mA

≤ 900 mΩ

INSULATION RESISTANCE:

≥ 10⁹ Ω

≥ 10⁹

DIELECTRIC STRENGTH:

≥ 250 Vrms

≥ 250 Vrms

BOUNCE TIME:

≤ 10 ms

≤ 1,25 ms

Environmental

OPERATING TEMPERATURE: -40°C to +85°C

STORAGE TEMPERATURE: -55°C to +85°C

Process

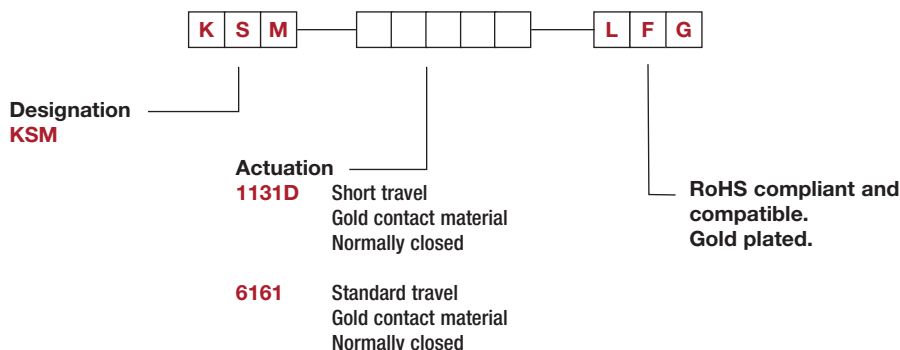
SOLDERING: Compatible with lead free reflow process

NOTE: Specifications listed above are for switches with standard options. For information on specific and custom switches, consult Customer Service Center.

How To Order

Our easy build-a-switch concept allows you to mix and match options to create the switch you need. To order, select desired option from each category and place it in the appropriate box.

For any part number different from those listed above, please consult your local representative.



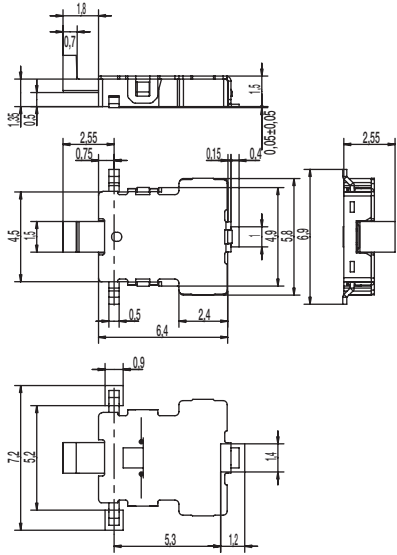
First Angle
Projection

Dimensions are shown: mm
Specifications and dimensions subject to change

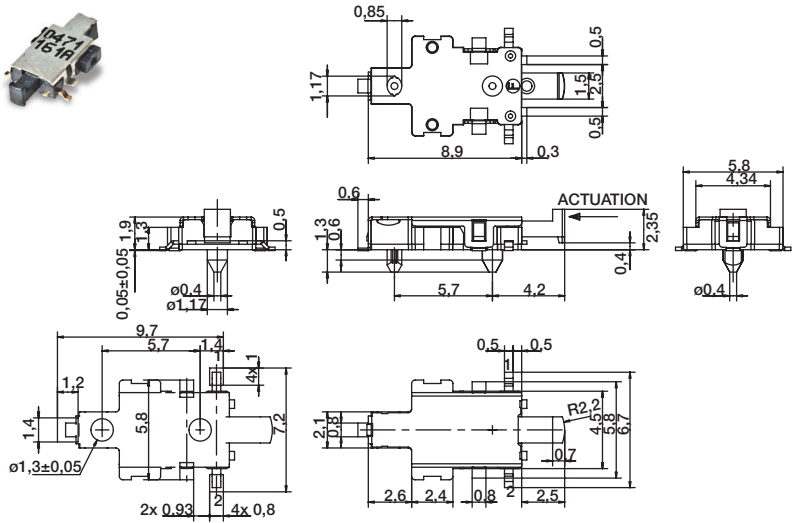


KSM Series Side Actuated Detect Switches

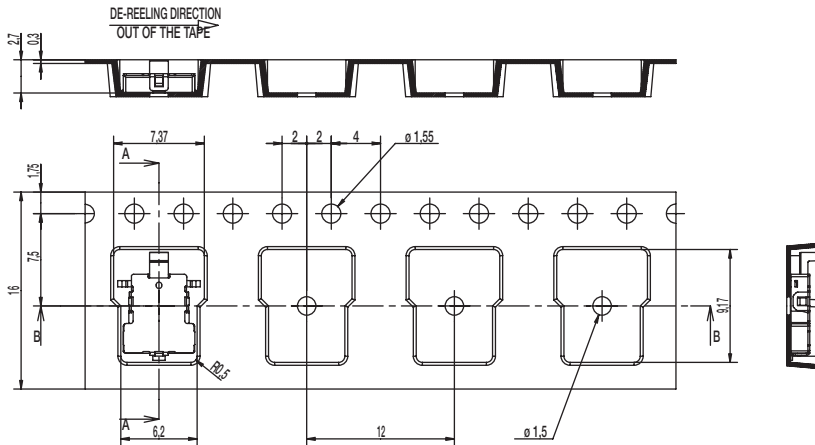
KSM1131D LFG



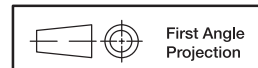
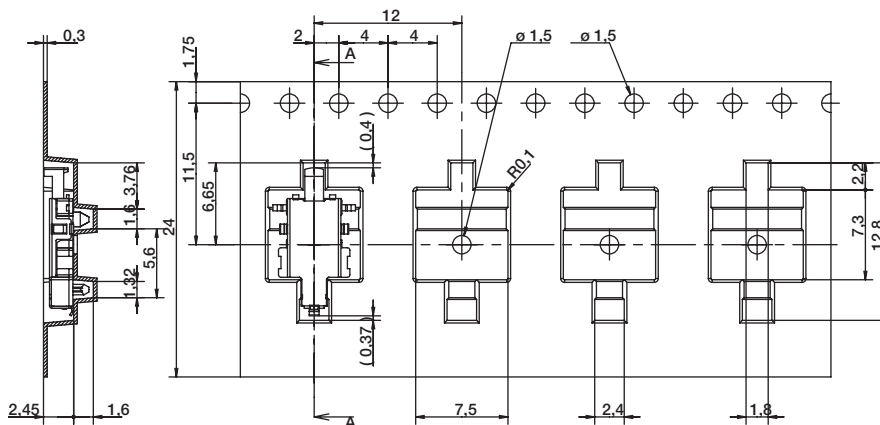
KSM6161 LFG



KSM1131D LFG



KSM6161 LFG



Dimensions are shown: mm
Specifications and dimensions subject to change

