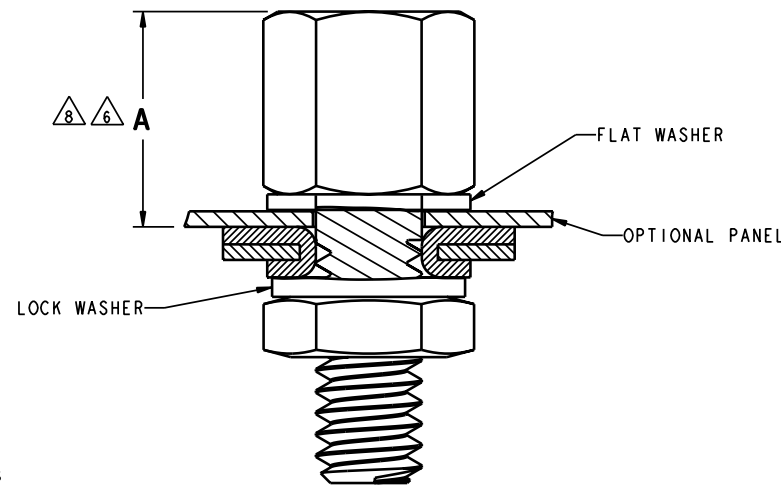
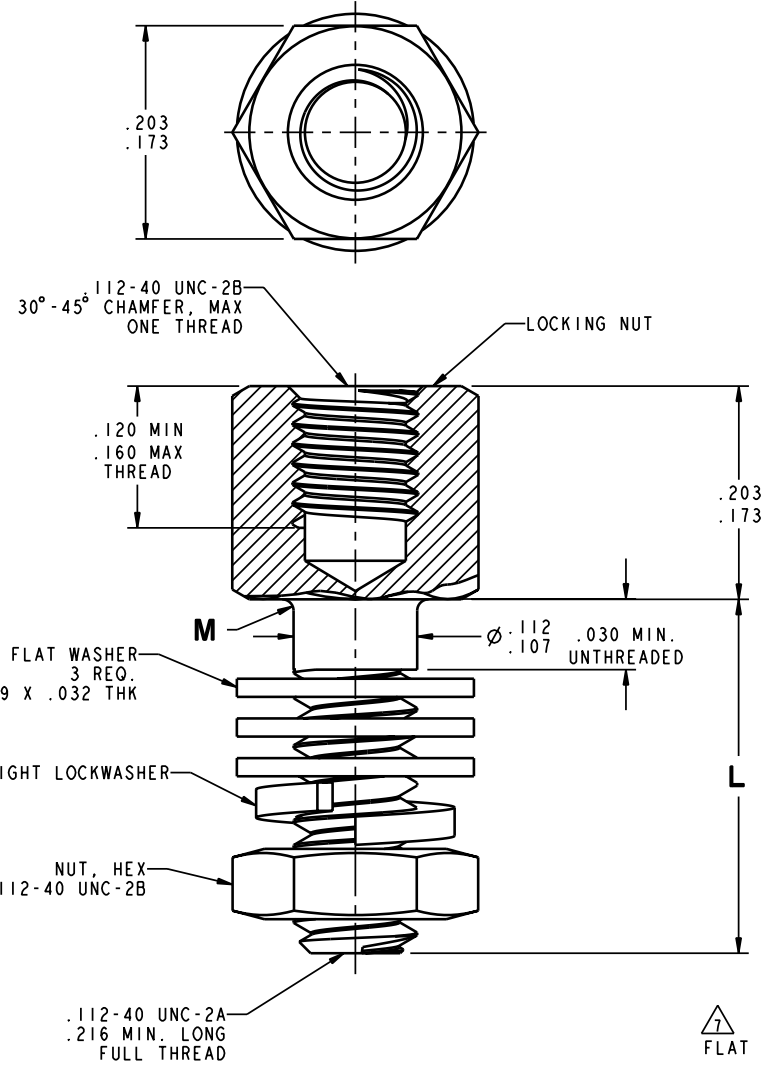
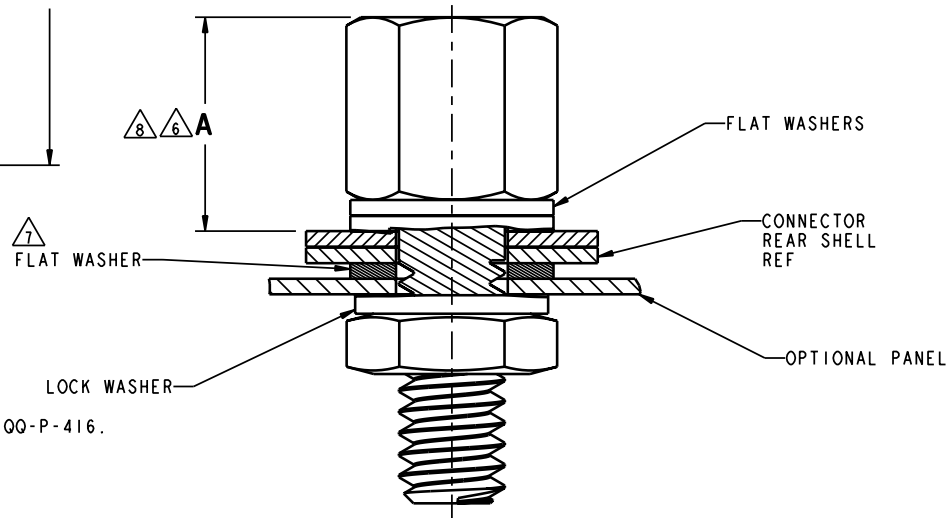


THIS IS ISSUED IN STRICT CONFIDENCE ON CONDITION THAT IT IS NOT USED AS A BASIS FOR MANUFACTURE OR SALE, AND THAT IT IS NOT COPIED, REPRODUCED OR DISCLOSED TO A THIRD PARTY EITHER WHOLLY OR IN PART WITHOUT THE PRIOR WRITTEN CONSENT OF ITT CANNON.

| | | | | | |
|---------------------|-----|-----|-------------|------|----------|
| DWG NO. 027391Y0001 | | REV | DESCRIPTION | DATE | APPROVAL |
| REV | DCR | | | | |



RIVET SHELL STYLE (REAR PANEL MOUNTING SHOWN)



TAB SHELL STYLE (FRONT PANEL MOUNTING SHOWN)

| PART NUMBER (QTY 1 SET) | PART NUMBER (QTY 2 SET) | FINISH | ROHs CODE | L ±.015 | M MAX |
|-------------------------|-------------------------|--------|-----------|---------|-------|
| D20418-145 | D20418-82 | △ | NTC | .312 | .005 |
| D20418-146 | | △ | NTC | .312 | .005 |
| D20418-147 | D20418-83 | △ | NTC | .625 | .005 |
| D20418-148 | | △ | NTC | .625 | .005 |
| D20418-50 | D20418-131 | △ | NTC | .500 | .010 |
| D20418-74 | D20418-132 | △ | NTC | .750 | .010 |
| D20418-134 | | △ | ROH | .312 | .010 |
| D20418-135 | | △ | ROH | .500 | .010 |
| D20418-136 | | △ | ROH | .625 | .010 |
| D20418-137 | | △ | ROH | .750 | .010 |

| SHELL SIZE | A±.030 |
|-------------------|--------|
| 1 & 2 (E & A) | .250 |
| 3, 4, 5 (B, C, D) | .238 |

NOTES: UNLESS OTHERWISE SPECIFIED

1. MATERIAL: COLD ROLLED STEEL.
- △₂ FINISH: YELLOW CHROMATE OVER CADMIUM IN ACCORDANCE WITH SAE AMS-QQ-P-416.
- △₃ FINISH: YELLOW CHROMATE OVER ZINC IN ACCORDANCE WITH ASTM B633.
- △₄ FINISH: CLEAR TRIVALENT CHROMATE (CR+3) OVER ZINC PER ASTM B633 (REF ITTC CODE A235).
5. INSPECTION PER MIL-DTL-24308, GROUP A REQUIRED
- △₆ REMOVE ONE FLAT WASHER FOR EACH .030 THICKNESS OF PANEL WHEN REAR MOUNTING SO THAT "A" DIMENSION IS MAINTAINED.
- △₇ FOR FRONT PANEL MOUNTING OF TAB TYPE SHELL ONE WASHER IS REQUIRED BETWEEN REAR SHELL AND PANEL.
- △₈ RECOMMENDED INSTALLATION CONFIGURATIONS. OTHER CONFIGURATION COMBINATIONS POSSIBLE DEPENDING ON FRONT OR REAR PANEL MOUNTING AND SHELL STYLE; HOWEVER DIMENSION "A" SHOULD ALWAYS BE MAINTAINED.
9. A 5 INCH-POUND MAXIMUM TORQUE DURING ASSEMBLY IS RECOMMENDED.

RoHS COMPLIANCE CODE

NTC - not RoHS compliant
 ROC - RoHS not hi-temp
 ROH - RoHS & hi-temp (260°C)
 NOTE - REFER TO TABLE/NOTES

NOTE

ITT Cannon LLC
 56 Technology Drive, IRVINE, CA 92618

| | | | |
|--|------------------------|-----------------|---|
| UNLESS OTHERWISE SPECIFIED: -DIMENSIONS AND TOLERANCES AS PER ASME Y14.5M-1994 -DIMENSIONS ARE IN INCHES AND (MM). -REMOVE ALL BURRS AND SHARP EDGES .005 (0.13) MAX. -DO NOT SCALE DRAWING. | WEIGHT | CRITICAL DIM | 0 |
| | DENSITY | SFC DIM | 0 |
| | VOLUME | REF DIMENSION | KEY 0 |
| DRAWN Ho Le | DATE 9/21/17 | SURFACE AREA | |
| CHECKED Lorry Ensign | DATE 9/22/17 | REF | |
| APPROVED Lorry Ensign | DATE 9/22/17 | PART NO | |
| TOL DECIMALS .1 ± .02 (0.51) | TOL ANGLES .1° ± .1° | SCALE 12.000 | DESCRIPTION |
| .01 ± .01 (0.25) | SURFACE ROUGHNESS .125 | CAGE CODE 71468 | CLAMP, ELECTRICAL, CONNECTOR FEMALE SCREWLOCK ASSEMBLY MASTER |
| .005 ± .005 (0.127) | .03 (1.14) | SIZE USE D P/C | |
| 3RD ANGLE PROJECTION | | SHEET 1 / 1 | 027391Y0001 |

EXPORT CODE C

This document contains technical data that is subject to export controls under the Export Administration Act and Export Administration Regulations (15 CFR 730, et seq.). Any transfer of this data to non-US persons or to any location outside the United States must be in compliance with the Export Administration Regulations.

PRINTED COPIES ARE NOT MAINTAINED TO LATEST REVISION.

DWG FILE NAME: 027391Y0001