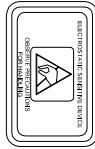


OGA DIAGONAL: 14.03 [356.4]
 VA DIAGONAL: 13.28 [337.2]
 PA DIAGONAL: 12.53 [318.3]

TOP LEVEL NUMBER	US NUMBER	CHINA NUMBER	TYPE	DIM "A" (TOTAL GLASS TO CONNECTOR)	A/G FINISH	PROD SPEC
17-9581-203	98-0003-2259-8	N/A	FFC	4.27" [108.46]	AG500	23655
17-9581-218	98-0003-2263-0	N/A	USB R	4.27" [108.46]	AG500	23655
17-9581-205	98-0003-3232-4	59-0000-0210-1	FFC	8.00" [203.20]	AG500	23655
17-9581-226	98-0003-3233-2	59-0000-0211-9	USB R	8.00" [203.20]	AG500	23655
17-9581-227	98-0003-3234-0	59-0000-0212-7	SER	8.00" [203.20]	AG500	23655

ESD CLAMSHELL CASE IS USED WITH ALL NOV, USB AND SER TERMINATIONS.



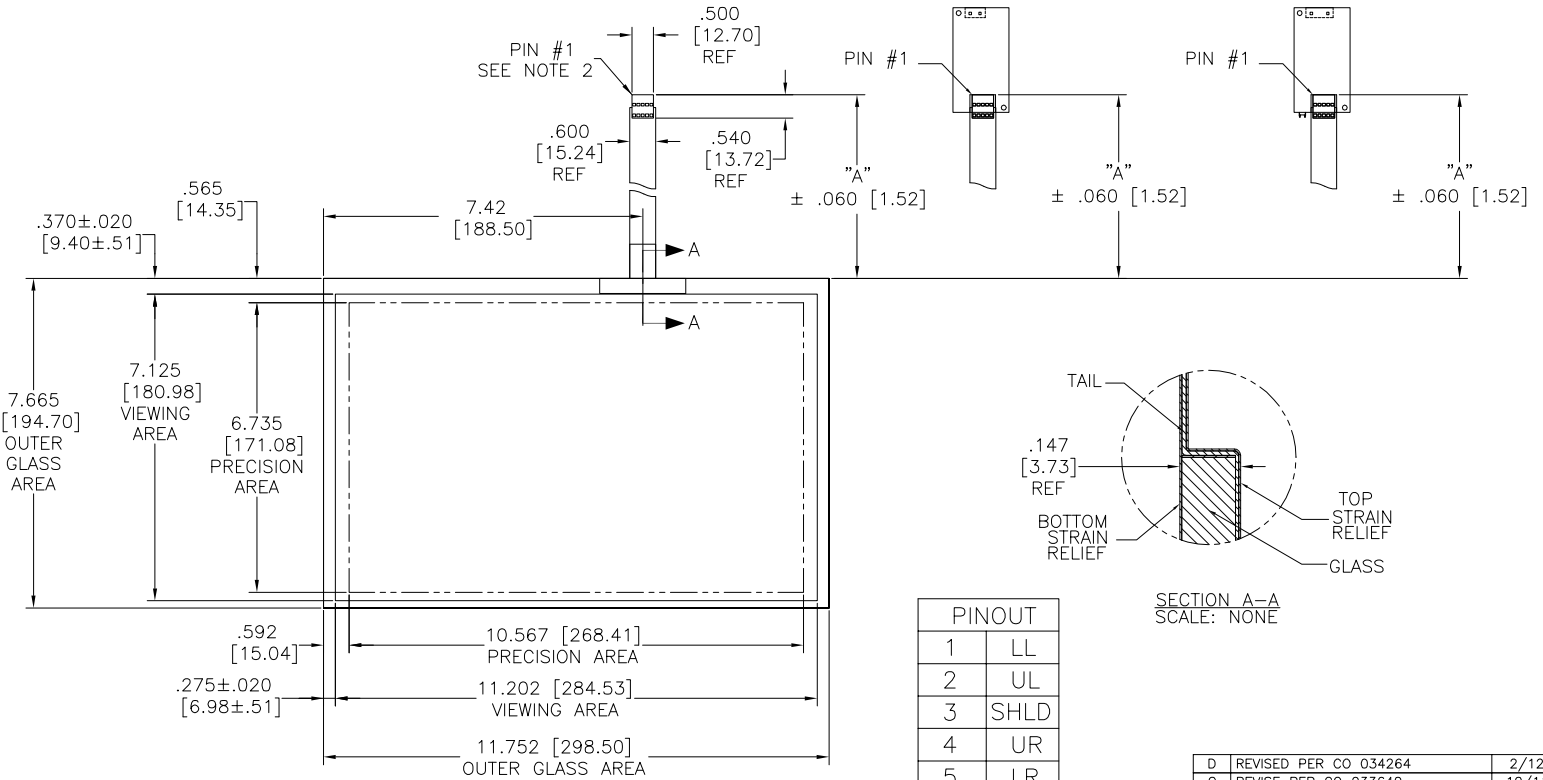
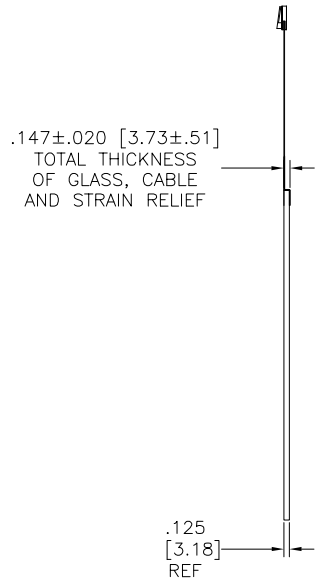
(FFC)

(USB R)

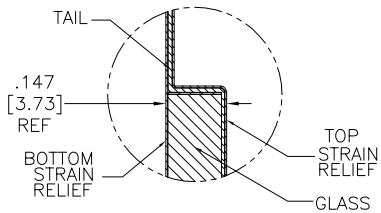
EXII-7760UC
 98-0003-2814-0
 USB CONTROLLER
 SOLDER SIDE

(SER)

EXII-7720SC
 98-0003-2217-6
 SERIAL CONTROLLER
 SOLDER SIDE



PINOUT	
1	LL
2	UL
3	SHLD
4	UR
5	LR



NOTES:

1. WEIGHT OF GLASS IN GRAMS: 461±10%
2. NICOMATIC HOUSING P/N: OLO5
 NICOMATIC RECEPTACLES (PINS) MATTE TIN PLATED P/N: 14106-12
 HOUSING ORIENTED WITH LATCH DOWN

UNITS	INCHES [MM]	 3M TOUCH SYSTEMS METHUEN, MA USA © COPYRIGHT 2004 THIS DOCUMENT IS COPYRIGHTED PROPERTY OF THE 3M COMPANY AND MAY NOT BE REPRODUCED WITHOUT 3M WRITTEN PERMISSION OR USED OR DISCLOSED FOR OTHER THAN 3M AUTHORIZED PURPOSES.
TOLERANCES UNLESS OTHERWISE SPECIFIED	.X ± .XX ±.03 [.76] .XXX ±.015 [.38] ANGLES ±1°	
THIRD ANGLE PROJECTION		DRAWN A. Hartofelis 9/08
DO NOT SCALE DRAWING	SCALE 1 = 1	CAD FORMAT AUTOCAD SHEET 1 OF 1

REV	CHANGE NOTICE	DATE	DRW
D	REVISED PER CO 034264	2/12	SB
C	REVISED PER CO 033640	10/11	SB
03	REVISED PER CO 030452	6/09	SB

TITLE	MARKETING DRAWING		
	SCT32NN 13.28"		
SIZE	DOCUMENT NO.	REV	
C	36186-MKT	D	