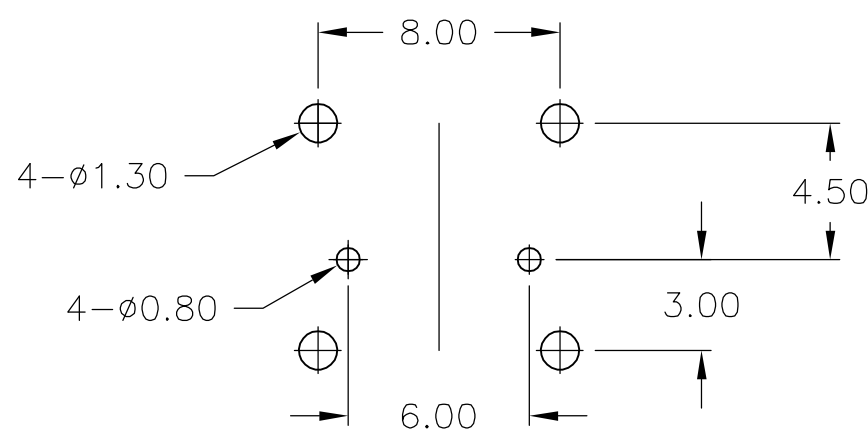
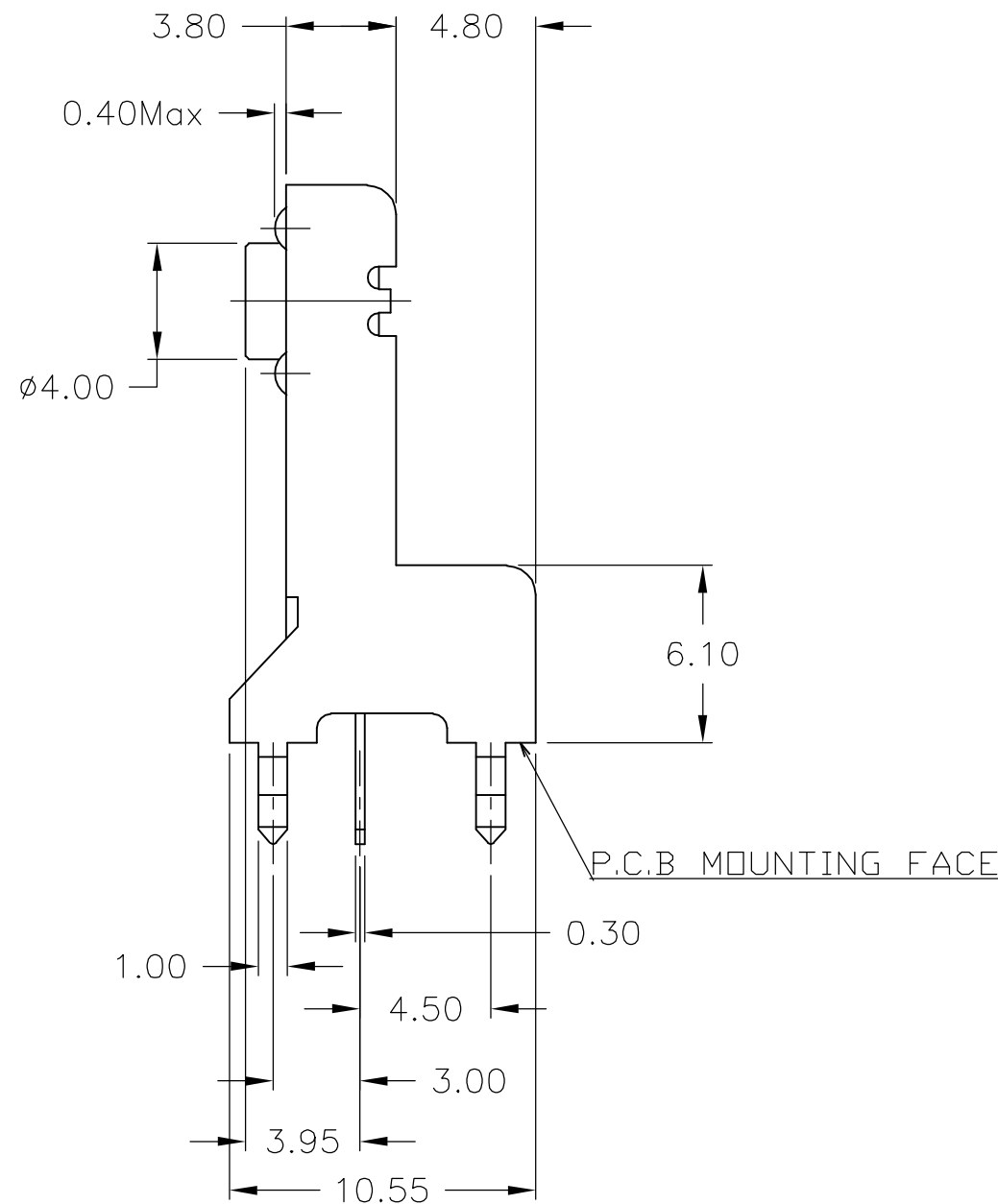
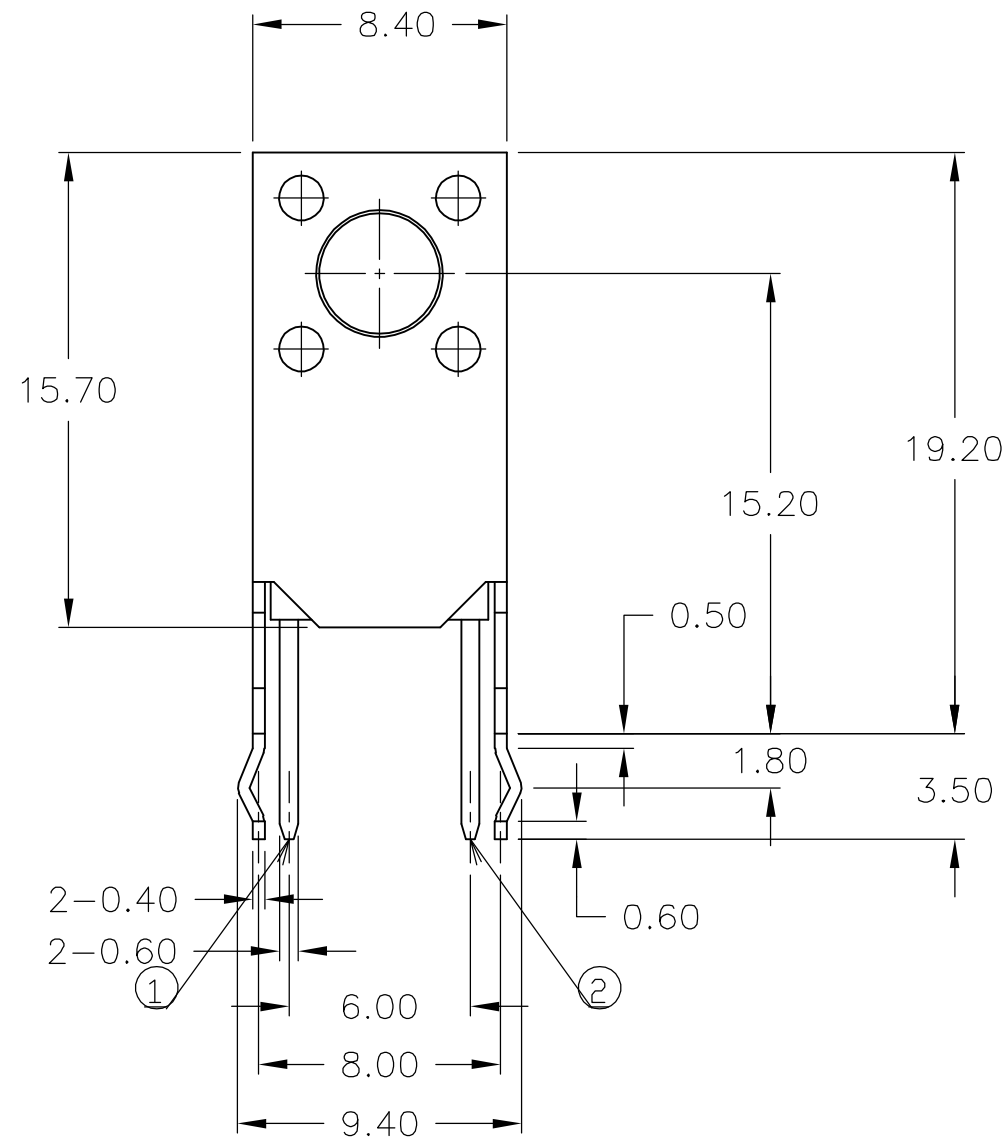
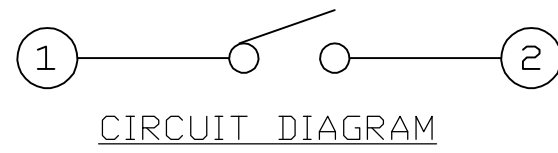
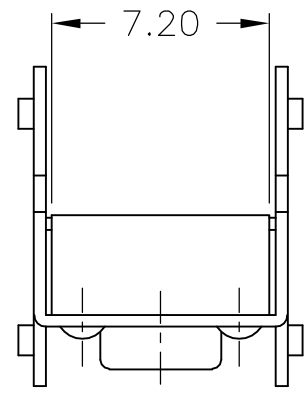


THIS DRAWING IS UNPUBLISHED. RELEASED FOR PUBLICATION
 © COPYRIGHT BY TYCO ELECTRONICS CORPORATION. ALL RIGHTS RESERVED.

LOC		DIST		REVISIONS			
P	LTR	DESCRIPTION	DATE	DWN	APVD		
1		PRELIMINARY	-	-	-		



P.C.B MOUNTING HOLE DIMENSION

Specifications:

Material's
 Bracket, Tin plate
 Actuator, PBT, UL94HB, Blue
 Contact, Copper Alloy, Silver Clad over Nickel plate
 Case, PBT, UL94V-0, Black
 Fixed Contact/Terminal, Copper Alloy, Silver Clad over Nickel plate

Electrical:

Contact Rating, 50mA@12VDC, Per EIA-448, Method 6
 Initial Contact resistance, 50 milliohms max, Per EIA-364-23B, each position
 Insulation Resistance, 100 Megohm min. Per EIA-364-21C each position
 Dielectric strength, 250 V AC for 1 minute, Per EIA-364-20B, Condition 1, each position.
 Contact Bounce, 10 milliseconds max.

Mechanical:

Actuation force, 160 +/-50 grams
 Actuation Travel, .25 + .2/- .1 mm
 Life Expectancy, 100,000 cycles, Per EIA-448 Methods 8 and 9,
 150% actuation force, 2cyc/sec.
 Vibration, Per EIA 364-28D, Condition VII, Level E
 Mechanical Shock, Per EIA-364-27C, Condition A

Environmental:

Operating Temperature, -20 to +85 degrees C, Per EIA-448, Method 10
 Storage Temperature, -30 to +85 degrees C
 Humidity and Temperature Cycling Per EIA-364-31B, Method III
 Thermal Shock, Per EIA-364-32C, -30 to +85 degrees C
 Solderability, Per EIA-364-52, Class 2, Category 1, 95% Minimum coverage
 Resistance to Solder Heat, Per 109-202, Condition B

PRELIMINARY
 NOT RELEASED FOR
 PRODUCTION

BULK	1825003-1
PACKAGING	PART NUMBER

THIS DRAWING IS A CONTROLLED DOCUMENT.		DWN M.BINNER	07DEC2005	tyco Tyco Electronics Corporation Harrisburg, PA 17105-3608	
DIMENSIONS: mm		CHK M.SARVER	APVD -	EXTENDED HEIGHT, R/A MINIATURE PUSHBUTTON SWITCH	
TOLERANCES UNLESS OTHERWISE SPECIFIED:		PRODUCT SPEC		RESTRICTED TO	
0 PLC ± -		APPLICATION SPEC		SIZE CAGE CODE DRAWING NO	
1 PLC ± -		-		A2 00779 C=1825003	
2 PLC ± -		-		SCALE SHEET REV	
3 PLC ± -		-		1:1 1 of 1 1	
4 PLC ± -		-			
ANGLES ± -		WEIGHT			
FINISH		CUSTOMER DRAWING			

1825003

PRELIMINARY