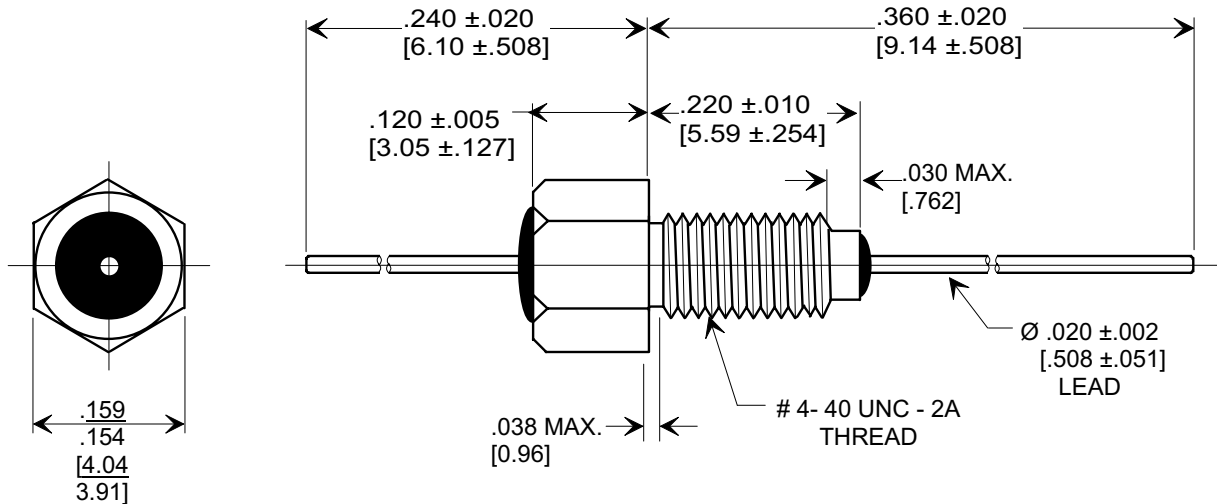
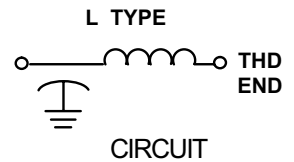
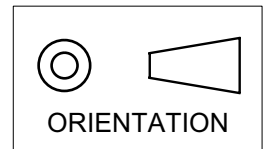


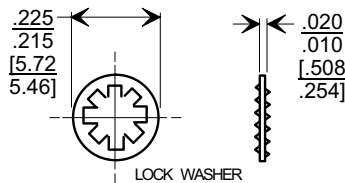
This drawing is the property of Tusonix, Inc., and may not be used, reproduced, published or disclosed to others without expressed authorization by Tusonix Inc.

**Electrical Testing**  
per Tusonix standard  
test plans and Mil-Std-202  
Test Methods.

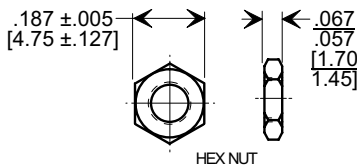
**MARKETING SALES DRAWING**  
**DIMENSIONS IN INCHES - DO NOT SCALE THIS DRAWING**  
**DIMENSIONS IN METRIC - [ ]**



**MOUNTING HARDWARE**



LOCK WASHER



HEX NUT

**NOTES:**

- TUSONIX STANDARD PART NUMBER: 4400-060.  
TUSONIX RoHS COMPLIANT PART NUMBER: 4400-060 LF.  
CUSTOMER MUST SPECIFY STANDARD OR RoHS PART NUMBER WHEN ORDERING.
- MATERIALS: SILVER PLATED BUSHING, LEAD, AND MOUNTING HARDWARE.
- PART MARKING: TRADEMARK AND VARIATION NUMBER ON HEX FLATS.  
STANDARD PART: BLACK INK. RoHS PART: GREEN INK.
- OPERATING TEMPERATURE RANGE: -55°C TO +125°C.
- MAXIMUM RECOMMENDED SOLDERING TEMPERATURE: 260°C.
- SUPPLIED WITH HEX NUT AND INTERNAL TOOTH LOCK WASHER.
- MAXIMUM RECOMMENDED MOUNTING TORQUE, 2.0 lb-in [226 Nm].

CAP.(pf)	TOLERANCE	WORKING VOLTAGE DC		PEAK CURRENT (AMPS)	I.R. MIN. @ 100 (VDC)	DWV (VDC)	MIN. NO LOAD INSERTION LOSS (dB) @ 25°C PER MIL-STD-220				
		85°C	125°C				1 MHz	10 MHz	100 MHz	1 GHz	10 GHz
27,000	GMV	70	50	10	10 G Ω	150	10	28	45	65	70

X-2015 Rev-0	<b>REVISION RECORD</b>		0 Original Release C.O. 20000614-2-01 DIM. .038 WAS .030. S.M. 11-08-01  1 20011102-1-07 ADDED AND REVISED NOTES. ADDED IR & DWV S.M. 01-24-06  2 20060109-3-07	--TOLERANCES-- Unless Otherwise Specified		Title <b>BUSHING STYLE EMI FILTER</b>	
	DECIMAL ± NOTED			Drawn S.M. 06-14-00		Scale 5 X	
	ANGLES ±					Approved T.C. 06-14-00	
						<b>A</b>	