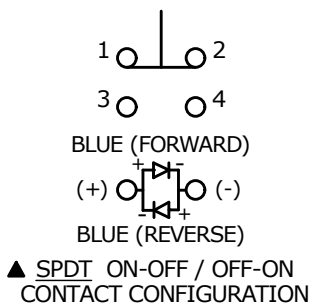


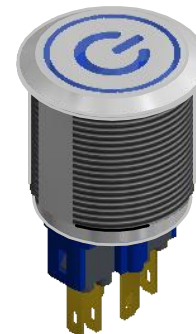
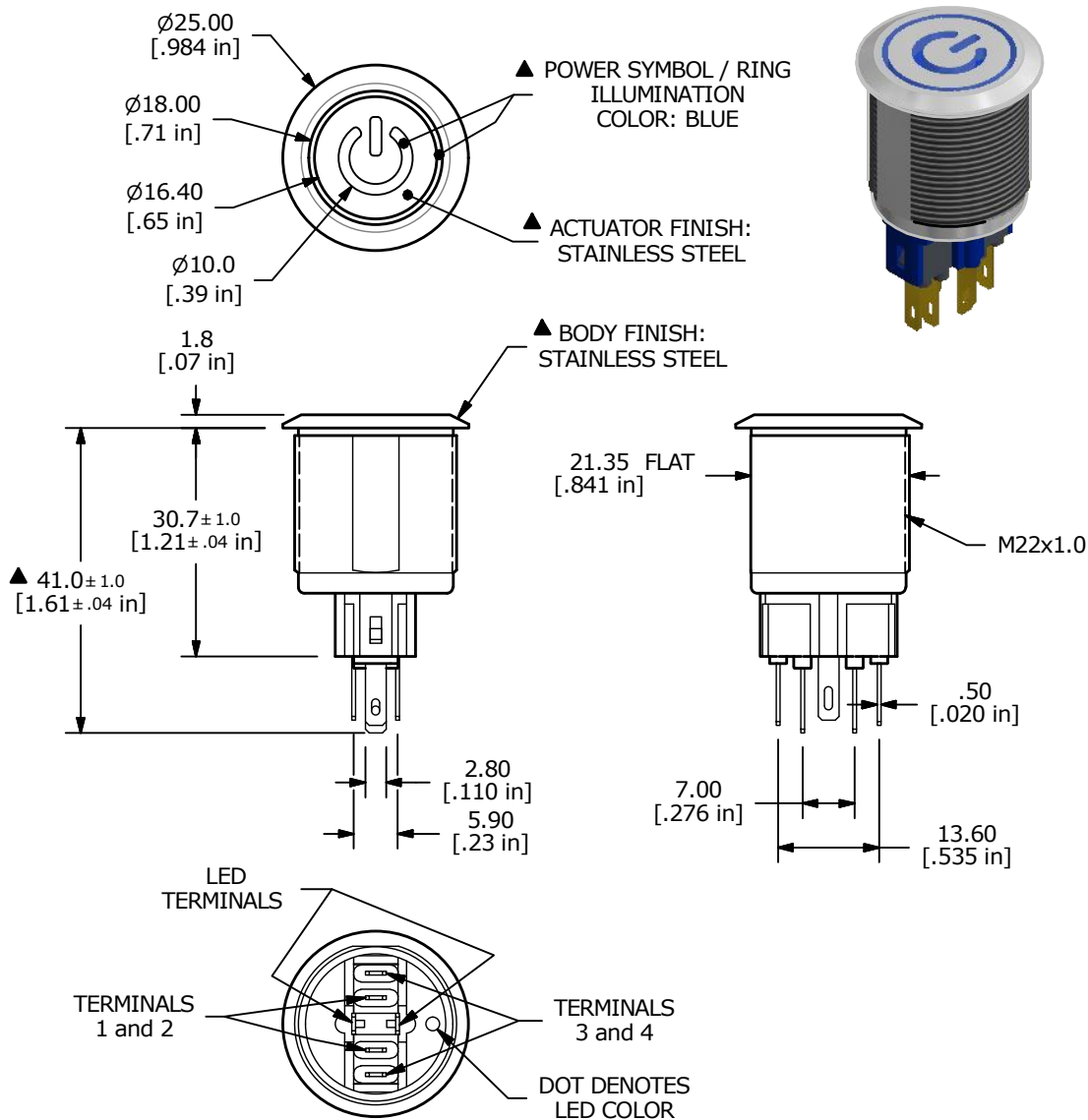
RECOMMENDED PANEL CUTOUT
MAX. PANEL THICKNESS 12mm

▲ SWITCH FUNCTION

POS. 1	POS. 2
1-2	3-4



- NOTE:
1. ALL DIMENSIONS IN MM [INCH]
 2. GENERAL TOLERANCE: X.X = ± 0.4
X.XX = ± 0.25
 3. TERMINAL NUMBERS FOR REF. ONLY
 4. RATING: 2A @ 48VDC
 - ▲ 5. ILLUMINATION VOLTAGE: 12V
 6. CONTACT RESISTANCE: 50mΩ MAX. @ 1A 12VDC
 7. INSULATION RESISTANCE: 1,000MΩ @ 500VDC
 8. DIELECTRIC STRENGTH: 2,000VAC MIN. FOR 1 MINUTE
 9. ELECTRICAL LIFE: 50,000 CYCLES
 10. OPERATING TEMPERATURE: -20°C to 55°C
 11. INGRESS PROTECTION: IP65
 12. SUPPLIED HARDWARE: O-RING AND HEXNUT
 13. ▲ DENOTES CRITICAL PARAMETER
 14. 2011/65/EU (ROHS) COMPLIANT



E	23390	correct Switch Function	6/1/18	MW
D	23348	UPDATED ACTUATOR & BODY CALLOUTS	5/4/18	MJR
C	21459	ADD FLAT TO BODY	5/21/14	EDP
REV	PCR NO	DESCRIPTION	DATE	BY

E-SWITCH®

TITLE PV7F2T0SS-344-M03

SCALE 1:1	DATE 12/5/2012	DR EBP	DWG 52-PV7F2T0SS344M03	REV E
-----------	----------------	--------	------------------------	-------