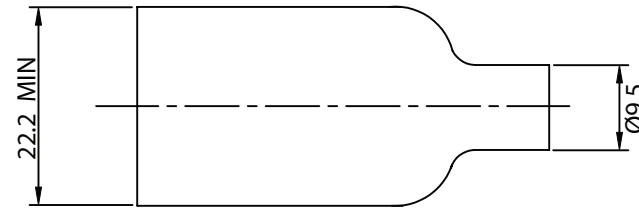
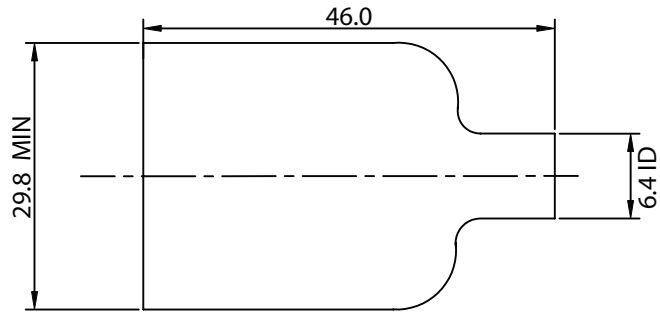


THESE DRAWINGS ARE THE PROPERTY OF QUALTEK ELECTRONICS AND NOT TO BE REPRODUCED FOR OR COMMUNICATED TO A THIRD PARTY WITHOUT THE EXPRESS WRITTEN PERMISSION OF AN OFFICER OF QUALTEK ELECTRONICS.

| REVISION | | | |
|----------|-----------------|----------|----------|
| REV. | DESCRIPTION | DATE | APPROVED |
| B | RoHS Compliancy | 06-01-06 | DP |
| | | | |
| | | | |



NOTES:

1. FOR USE WITH 701, 701W, 702, 703, 703W, 707, AND 708 SERIES AC RECEPTACLES
2. PVC BOOT
3. RoHS COMPLIANT

CONTROLLED

| Dim range (mm) | Tolerance +/- (mm) | Qualtek Electronics Corp. PPC DIVISION | | |
|----------------|--------------------|---|--------------|----------------|
| | | Part Number: | 727-00/00 | RoHS Compliant |
| 0-1 | 0.15 | Description: INSULATION BOOT | | |
| 1-6 | 0.20 | | | |
| 6-18 | 0.30 | UNIT: mm | REV. B | |
| 18-50 | 0.50 | | Drawn / Date | Checked / Date |
| 50-120 | 0.70 | B.ZHANG | 07-02-02 | JJH / 07-02-02 |
| 120-250 | 0.90 | 07-02-02 | | |
| 250-500 | 1.20 | | | |

Mouser Electronics

Authorized Distributor

Click to View Pricing, Inventory, Delivery & Lifecycle Information:

[Qualtek:](#)

[727-00/00](#)