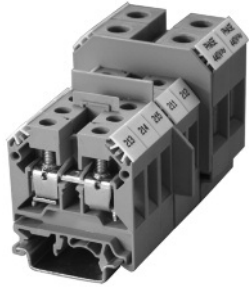


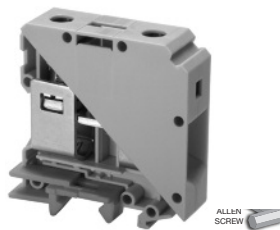
Feed-Through



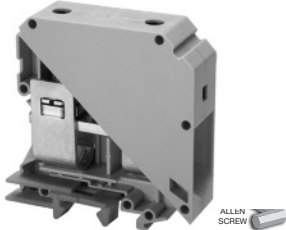
CTS35UN



CTS50UN



CTS95U



Terminal Width

16 mm

20.5 mm

25 mm

Height x Length

58 x 52.5 mm

75.5 x 71 mm

90 x 83 mm

Stripping Length

18 mm

22 mm

24 mm

Insulation Material

Polyamide 6.6

Polyamide 6.6

Polyamide 6.6

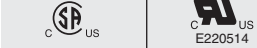
Type of Connection

2 screw clamps & 1 tapped hole for cross

2 screw clamp connections

2 screw clamp connections

Approvals



Wire Range

2-12 AWG 2-12 AWG

6-2/0 AWG 16-50 sq.mm 6-2/0 AWG

2-4/0 AWG 25-95 sq.mm 2-4/0 AWG

Voltage Rating

600 V 600 V

600V 1600 V 600 V

600V 2000 V 600 V

Current Rating

130 A 130 A

150 A 150 A 150 A

230 A 192 A 230 A

Torque

25 lb-in 25 lb-in

60 lb-in 6.8 Nm 60 lb-in

160 lb-in 10 Nm 160 lb-in

Other Approvals



Cat. No. Std. Pk.

Cat. No. Std. Pk.

Cat. No. Std. Pk.

Terminal Block

CTS35UN 50

CTS50U 10

CTS95U 10

Isolation Partition 

PP35UN 50

DIN Rail for ordering information refer to page 72 

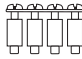


End Stop for ordering info. refer to page 74 


CA702 50
CA802 50

CA202 50
CA102 50

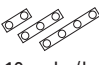
CA202 50
CA102 50

Internal Jumper 2 pole
3 pole
4 pole
10 pole
100 pole 

CA771/2 50
CA771/3 25
CA771/4 25
CA771/10 10

Insulated Internal Jumper 2 pole
3 pole
4 pole
10 pole
100 pole 

CA781/2 50
CA781/3 25
CA781/4 25
CA781/10 10


Current Bars 2 pole
3 pole
4 pole
10 pole
10 pole (breakable)
100 pole 

CA703/10 100
CA704/10 100
CA705/10 100
CA770/10 100

Shorting Sleeve & Screw 

CA707/S/Q/2 100

External Jumper 2 pole
3 pole
4 pole
10 pole 

Marking Tags 

MT16 100
MT6F 10

MT20 100
MT6F 10

MT25 100
MT6F 10