

PLEASE CHECK WWW.MOLEX.COM FOR LATEST PART INFORMATION

Part Number: [0877153917](#)
Status: **Active**
Overview:
Description: 1.00mm (.039") Pitch, PCI Express* Connector, 280 Circuits, Nylon 4/6 Glass-filled, Black Housing, Phosphor Bronze, Gold (Au) Flash, with Plastic Pegs, 2..54mm (.100") Solderetail, Lead Free

Agency Certification

CSA LR19980

General

Product Family Edge Card Connectors
 Series 87715
 Component Type Edgecard to PCB
 Overview pci_express_card_edge_connector
 Product Name PCI Express*

Physical

Circuits (Loaded) 280
 Circuits (maximum) 280
 Circuits Detail All Signal
 Durability (mating cycles max) 50
 Entry Angle Vertical (Top Entry)
 Flammability 94V-0
 Keying to Mating Part Yes
 Material - Plating Mating Gold
 Material - Plating Termination Tin
 PC Tail Length (in) 0.100 In
 PC Tail Length (mm) 2.54 mm
 PCB Locator Yes
 PCB Retention Yes
 PCB Thickness Recommended (in) 0.062 In
 PCB Thickness Recommended (mm) 1.60 mm
 Packaging Type Tray
 Pitch - Mating Interface (in) 0.039 In
 Pitch - Mating Interface (mm) 1.00 mm
 Pitch - Term. Interface (in) 0.039 In
 Pitch - Term. Interface (mm) 1.00 mm
 Polarized to Mating Part Yes
 Temperature Range - Operating -55°C to +85°C
 Termination Interface: Style Through Hole

Electrical

Current - Maximum per Contact 1.1A
 Voltage - Maximum 50V AC (RMS)/DC

Solder Process Data

Lead-free Process Capability Wave Capable (TH only)
 Process Temperature max. C 260

Material Info

Reference - Drawing Numbers

Packaging Specification PK-87715-206
 Product Specification PS-87715-206
 Sales Drawing SD-87715-206
 Test Summary TS-87715-206

EU RoHS

**ELV and RoHS
Compliant**

REACH SVHC

Not Reviewed

Halogen-Free

Status

Not Reviewed

China RoHS



**Need more information on product
environmental compliance?**

Email productcompliance@molex.com
 For a multiple part number RoHS Certificate of Compliance, [click here](#)

Please visit the [Contact Us](#) section for any non-product compliance questions.

Search Parts in this Series

87715Series

Mates With

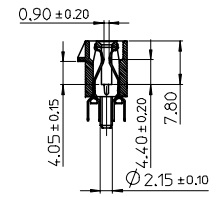
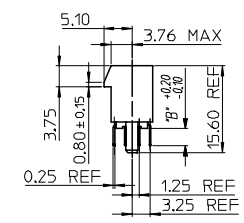
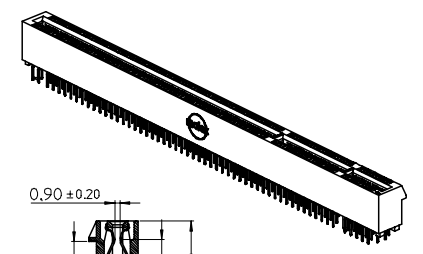
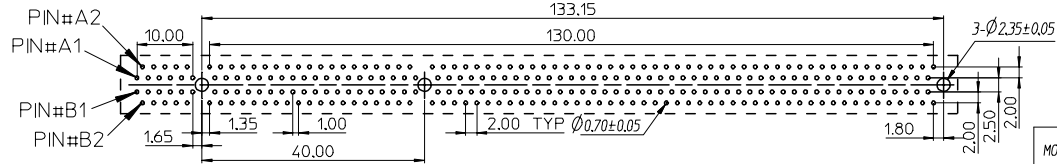
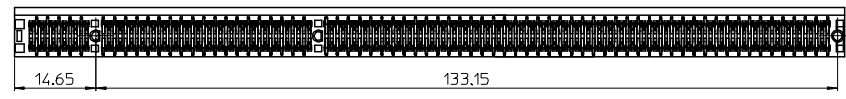
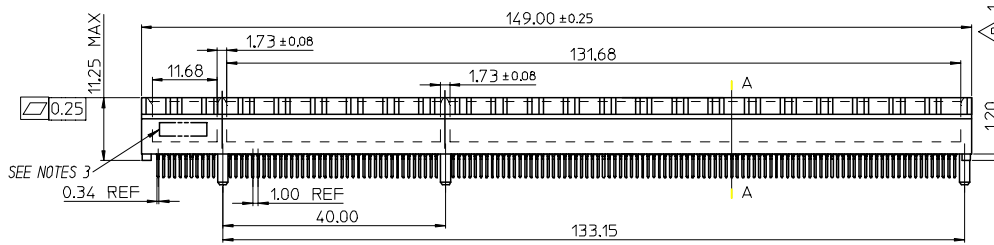
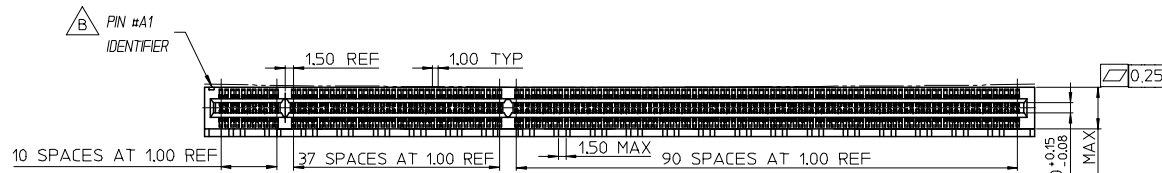
PCI Express Card

| * PCI Express is a registered trademark of PCI-SIG®

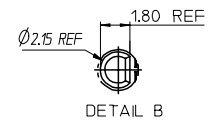
This document was generated on 06/04/2010

PLEASE CHECK WWW.MOLEX.COM FOR LATEST PART INFORMATION

7 6 5 4 3 2 1



SECTION A-A



DETAIL B

- NOTES:
 1.MATERIALS:
 1-1.HOUSING:SEE TABLE GLASS FIBER FILLED UL94V-0
 COLOR:SEE TABLE
 1-2.CONTACT:SEE TABLE
 2.PLATING:
 2-1.CONTACT AREA:SEE TABLE
 2-2.SOLDER TAIL:SEE TABLE
 2-3.UNDER PLATING:SEE TABLE
 3.DATE CODE:TO BE PRINTED
 4.PRODUCT SPECIFICATION REFER TO PS-87715-200
 5.PACKAGE SPECIFICATION REFER TO PK-87715-206
 6.TEST SUMMARY:REFER TO TS-87715-206
 7.LEAD FREE AND ROHS COMPLIANT.

| MOLEX PIN | CIRCUIT SIZE | HOUSING MATERIAL | HOUSING COLOR | TERMINAL MATERIAL | CONTACT PLATING | SOLDERTAIL PLATING | DIMB* |
|------------|--------------|------------------|---------------|-------------------|-----------------|---|-------|
| 87715-3914 | 280 | NYLON 46 | BLACK | PHOSPHOR BRONZE | GOLD FLASH | 100 MICRORINCH TIN OVER 50 MICRORINCH NICKEL OVERALL | 3.00 |
| 87715-3915 | 280 | NYLON 46 | BLACK | PHOSPHOR BRONZE | 15 MICRORINCH | 100 MICRORINCH TIN OVER 50 MICRORINCH NICKEL OVERALL | 3.00 |
| 87715-3916 | 280 | NYLON 46 | BLACK | PHOSPHOR BRONZE | 30 MICRORINCH | 100 MICRORINCH TIN OVER 50 MICRORINCH NICKEL OVERALL | 3.00 |
| 87715-3917 | 280 | NYLON 46 | BLACK | PHOSPHOR BRONZE | GOLD FLASH | 100 MICRORINCH TIN OVER 50 MICRORINCH NICKEL OVERALL | 2.54 |
| 87715-3918 | 280 | NYLON 46 | BLACK | PHOSPHOR BRONZE | 15 MICRORINCH | 100 MICRORINCH TIN OVER 50 MICRORINCH NICKEL OVERALL | 2.54 |
| 87715-3919 | 280 | NYLON 46 | BLACK | PHOSPHOR BRONZE | 30 MICRORINCH | 100 MICRORINCH TIN OVER 50 MICRORINCH NICKEL OVERALL | 2.54 |

| | | | | | | | | | | |
|--|--|---------------------------------------|--------------|----------------------------|------------|--|--------------------|--|-----------|--|
| EWR 2006-0005 & 2006-0019 2005-0094 EC NO: SH2006-0100 DRWN:ALL IN 2006/05/15 CHKD: 2006/05/15 APPR:WWSCHANG 2006/05/16 | QUALITY SYMBOLS ▽=0 ▽=0 | GENERAL TOLERANCES (UNLESS SPECIFIED) | | DIMENSION STYLE MM ONLY | | SCALE | DESIGN UNITS | THIRD ANGLE PROJECTION | | |
| | | | mm | INCH | DRAWN BY | DATE | TITLE | 1.0 EDGE CARD 280 CKT VERTICAL DIP CONNECTOR (LEAD FREE VERSION) | | |
| | | 4 PLACES | ± --- | ± --- | TOM | 2005/03/22 | MOLEX INCORPORATED | | | |
| | | 3 PLACES | ± --- | ± --- | CHECKED BY | DATE | | DOCUMENT NO. | SHEET NO. | |
| | 2 PLACES | ± 0.25 | ± --- | ALL IN | 2005/03/22 | SD-87715-206 | 1 OF 2 | | | |
| | 1 PLACE | ± 0.25 | ± --- | APPROVED BY | DATE | THIS DRAWING CONTAINS INFORMATION THAT IS PROPRIETARY TO MOLEX INCORPORATED AND SHOULD NOT BE USED WITHOUT WRITTEN PERMISSION | | | | |
| | ANGULAR ± 3 ° | | MATERIAL NO. | DATE | | | | | | |
| | DRAFT WHERE APPLICABLE MUST REMAIN WITHIN DIMENSIONS | | | SEE TABLE | | | | | | |

6 5 4 3 2 1

7 6 5 4 3 2 1

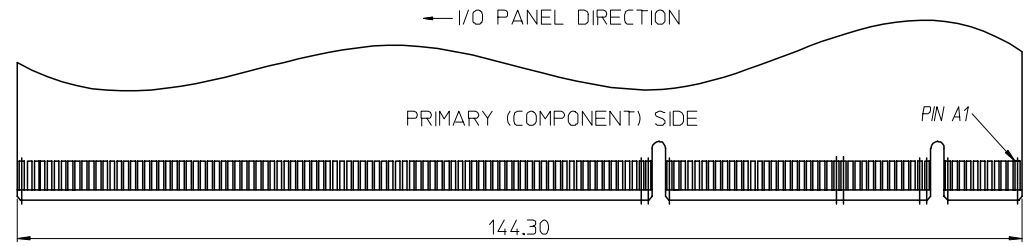
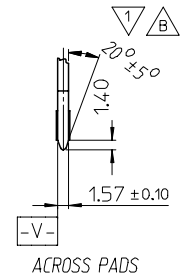
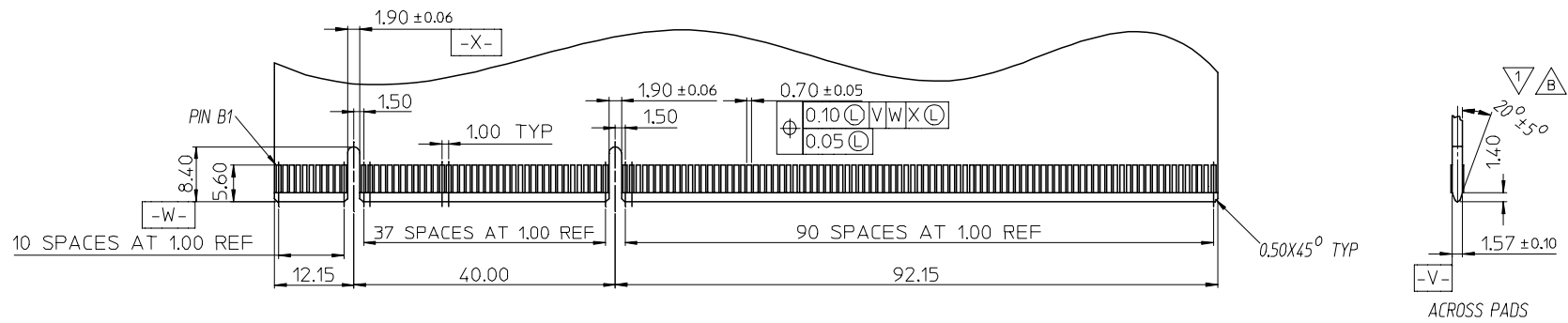
E

D

C

B

A



△ I/O PANEL → DIRECTION
DAUGHTER CARD
SECONDARY (SOLDER) SIDE

△ CHAMFER EDGES MUST BE FREE OF CUTTING BURRS.

| | | | | | | | | | |
|--|-----------------|--|--------|-----------------|---|--|--------------|------------------------|--|
| SEE SHEET 1 EC NO: SH2006-0100 DRWN: ALL IN CHKD: APPR: WWSCHANG 2006/05/15 2006/05/15 2006/05/16 | QUALITY SYMBOLS | GENERAL TOLERANCES (UNLESS SPECIFIED) | | DIMENSION STYLE | | SCALE | DESIGN UNITS | THIRD ANGLE PROJECTION | |
| | ▽ = 0 ◻ = 0 | mm | INCH | MM ONLY | | 1:1 | METRIC | | |
| | | 4 PLACES ± --- | ± --- | DRAWN BY | DATE | TITLE | | | |
| | | 3 PLACES ± --- | ± --- | TOM | 2005/03/22 | 1.0 EDGE CARD 280 CKT VERTICAL DIP CONNECTOR (LEAD FREE VERSION) | | | |
| | | 2 PLACES ± 0.25 | ± --- | CHECKED BY | DATE | MOLEX INCORPORATED | | | |
| | 1 PLACE ± 0.25 | ± --- | ALL IN | 2005/03/22 | | | | | |
| | ANGULAR ± 3 ° | DRAFT WHERE APPLICABLE MUST REMAIN WITHIN DIMENSIONS | | APPROVED BY | DATE | DOCUMENT NO. | | SHEET NO. | |
| | | | | WWSCHANG | 2005/03/22 | SD-87715-206 | | 2 OF 2 | |
| | | | | MATERIAL NO. | SEE TABLE | | | | |
| | | | | SIZE | THIS DRAWING CONTAINS INFORMATION THAT IS PROPRIETARY TO MOLEX INCORPORATED AND SHOULD NOT BE USED WITHOUT WRITTEN PERMISSION | | | | |
| | | | | △ 4 | | | | | |

6 5 4 3 2 1