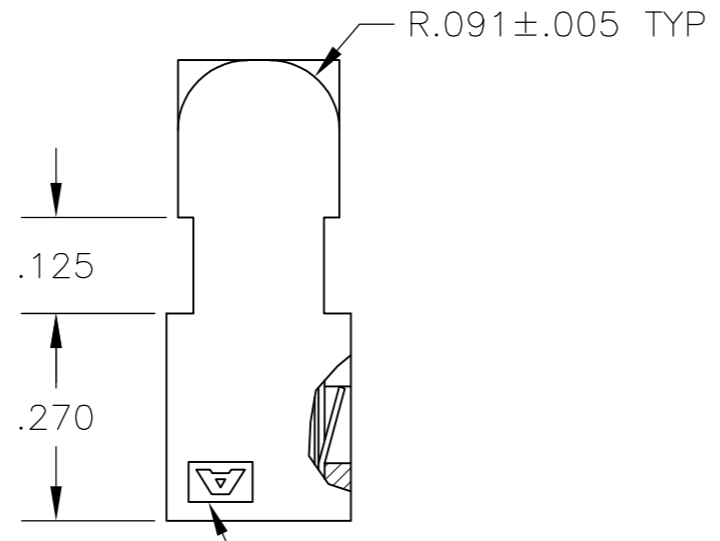
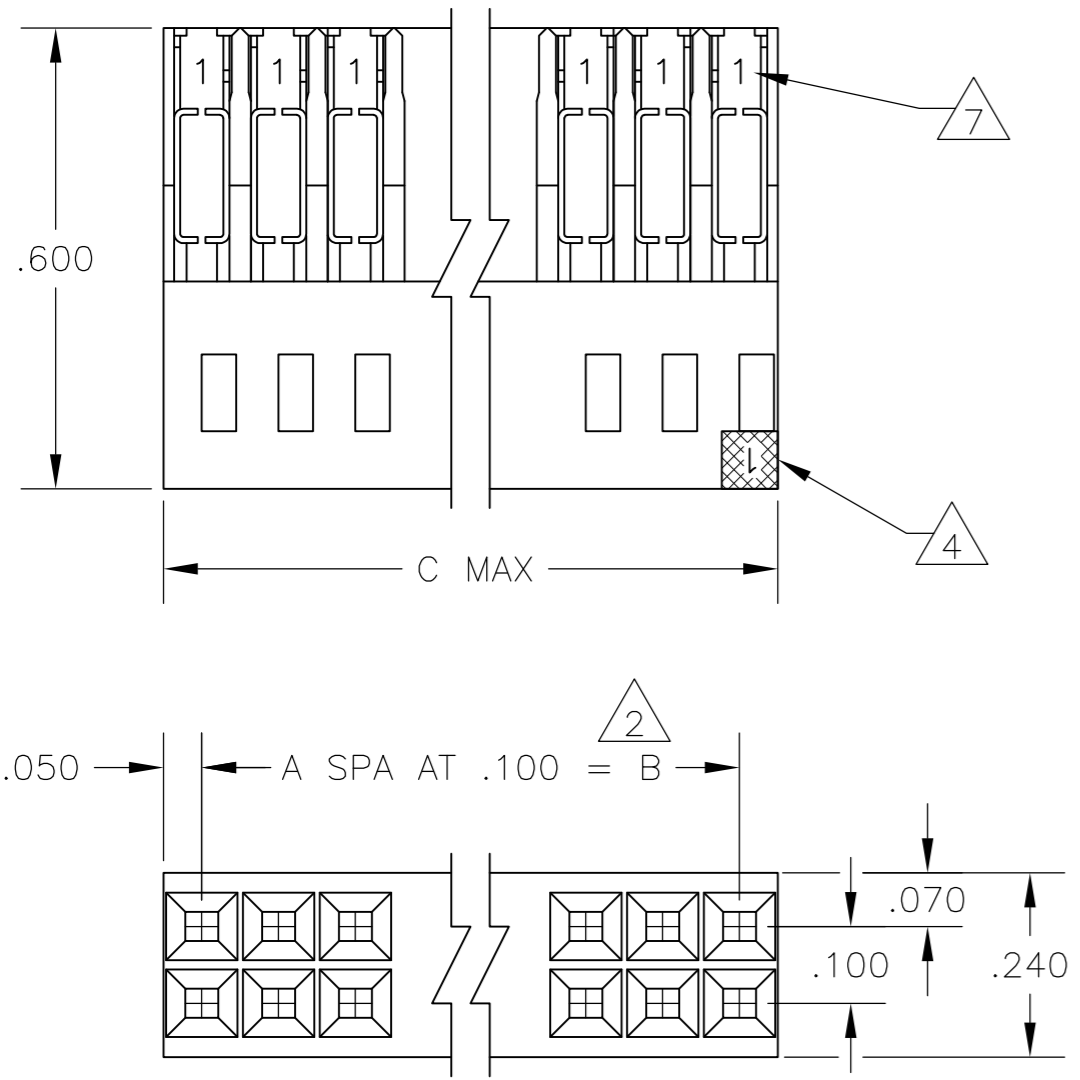


THIS DRAWING IS UNPUBLISHED. RELEASED FOR PUBLICATION
 © COPYRIGHT - By - ALL RIGHTS RESERVED.

LOC	DIST	REVISIONS					
AD	00	P	LTR	DESCRIPTION	DATE	DWN	APVD
		S2		REVISED PER ECO-11-004587	11MAR11	RK	HMR



C	B	A	NO OF POS	ASSEMBLY PART NUMBER
3.200	3.100	31	64	3 9 8-102393-0
3.000	2.900	29	60	3 7-102393-8
2.700	2.600	26	54	3 7-102393-5
2.500	2.400	24	50	3 7-102393-3
2.000	1.900	19	40	3 6-102393-8
1.700	1.600	16	34	3 6-102393-5
1.600	1.500	15	32	3 6-4
1.500	1.400	14	30	3 6-3
1.400	1.300	13	28	3 6-2
1.300	1.200	12	26	3 6-1
1.200	1.100	11	24	3 6-0
1.100	1.000	10	22	3 5-9
1.000	.900	9	20	3 5-8
.900	.800	8	18	3 5-7
.800	.700	7	16	3 5-6
.700	.600	6	14	3 5-5
.600	.500	5	12	3 5-4
.500	.400	4	10	3 5-3
.400	.300	3	8	3 5-2
.300	.200	2	6	3 5-102393-1

C	B	A	NO OF POSN	ASSEMBLY PART NUMBER
3.600	3.500	35	72	3-102393-4
3.500	3.400	34	70	3-3
3.400	3.300	33	68	3-2
3.300	3.200	32	66	3-1
3.200	3.100	31	64	3-1
3.100	3.000	30	62	2-9
3.000	2.900	29	60	2-1
2.900	2.800	28	58	2-7
2.800	2.700	27	56	2-6
2.700	2.600	26	54	2-1
2.600	2.500	25	52	2-4
2.500	2.400	24	50	2-1
2.400	2.300	23	48	2-2
2.300	2.200	22	46	2-1
2.200	2.100	21	44	2-0
2.100	2.000	20	42	1-9
2.000	1.900	19	40	1-1
1.900	1.800	18	38	1-7
1.800	1.700	17	36	1-6
1.700	1.600	16	34	1-1
1.600	1.500	15	32	1-1
1.500	1.400	14	30	1-1
1.400	1.300	13	28	1-1
1.300	1.200	12	26	1-1
1.200	1.100	11	24	1-1
1.100	1.000	10	22	1-1
1.000	.900	9	20	1-1
.900	.800	8	18	1-1
.800	.700	7	16	1-1
.700	.600	6	14	1-1
.600	.500	5	12	1-1
.500	.400	4	10	1-1
.400	.300	3	8	1-1
.300	.200	2	6	1 102393-1

- 1 .000030 GOLD IN THE CONTACT AREA, .000050-.000100 TIN-LEAD IN THE TERMINATION AREA, ALL OVER .000050 NICKEL.
- 2 TOLERANCE NON-CUMULATIVE.
- 3 .000030 GOLD IN THE CONTACT AREA, .000050-.000100 TIN IN THE TERMINATION AREA, ALL OVER .000050 NICKEL.
- 4 MOLDED CIRCUIT #1 IDENTIFIER IN LOCATION SHOWN.
- 5 OBSOLETE PART NUMBER
- 6 USE WITH 26-30 AWG WIRE SIZE, .050 MAX INSULATION DIA., .015 MAX INSULATION WALL THICKNESS.
- 7 CONTACT IDENTIFICATION NUMBER "1" LOCATED IN THIS AREA.
- 8 AMP TRADEMARK (EITHER SIDE).
- 9 OBSOLETE PARTS: OBSOLETE CIS STREAMLINING PER D.RENAUD/D.SINISI

THIS DRAWING IS A CONTROLLED DOCUMENT.

DWN	L.D.RINGLEY	7-1-85
CHK	P.C.deJONG	7-1-85
APVD	P.C.deJONG	7-1-85

TE Connectivity

ASSEMBLY, MASS TERMINATION, AMPMODU, DOUBLE ROW, .100 X .100 CL, #26-#30 AWG WIRE SIZE

SCALE 4:1 SHEET 1 of 1 REV S2