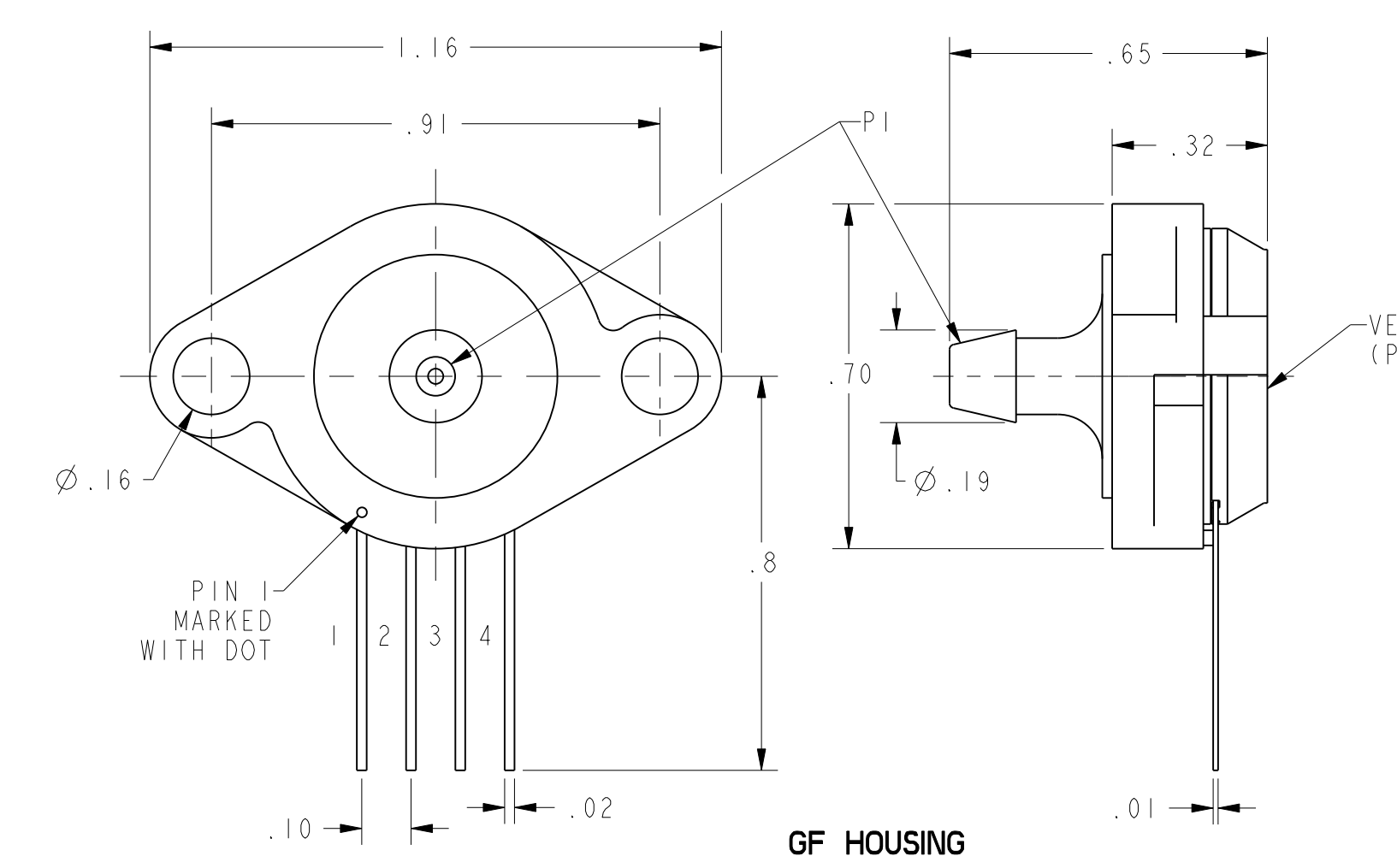
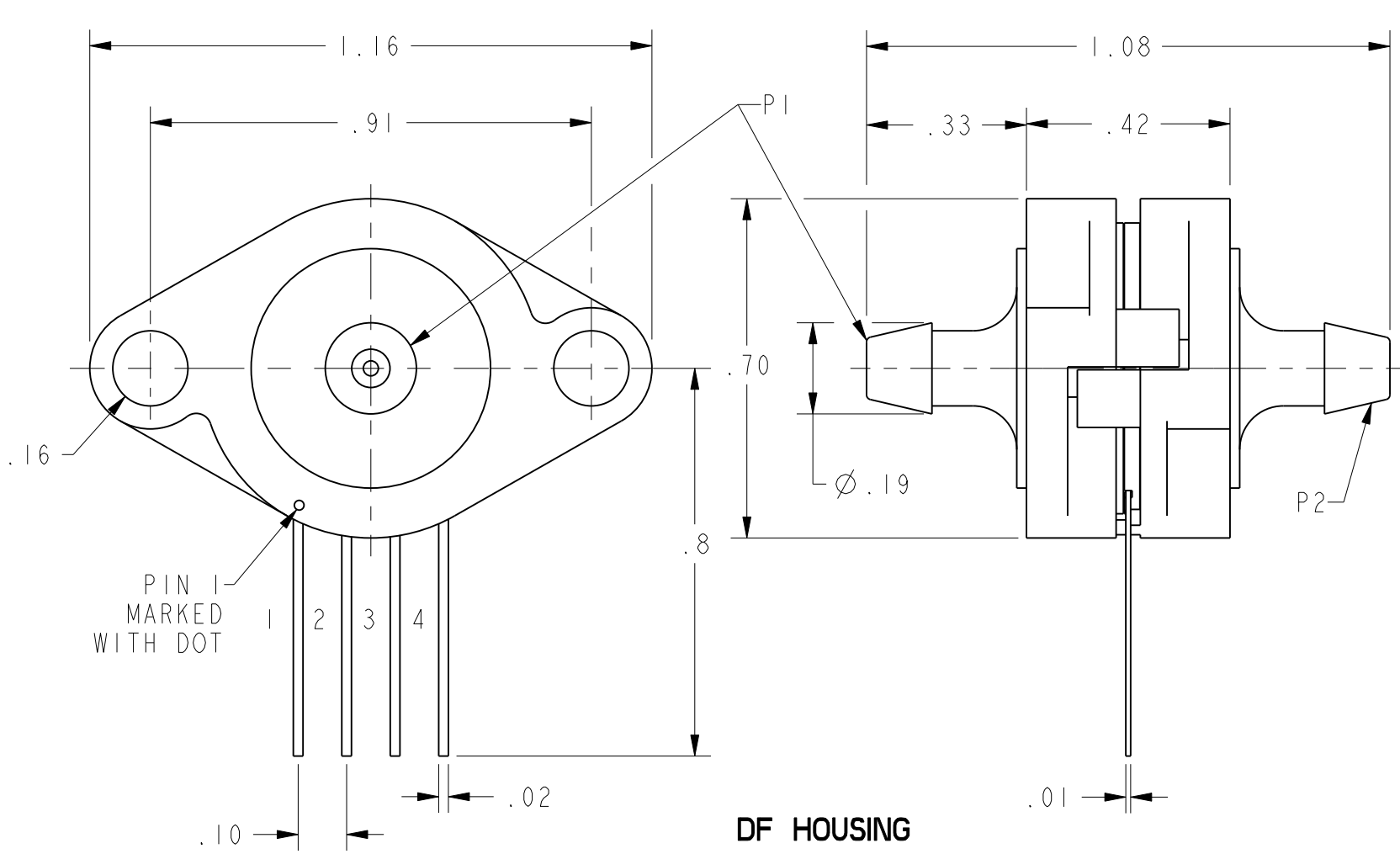
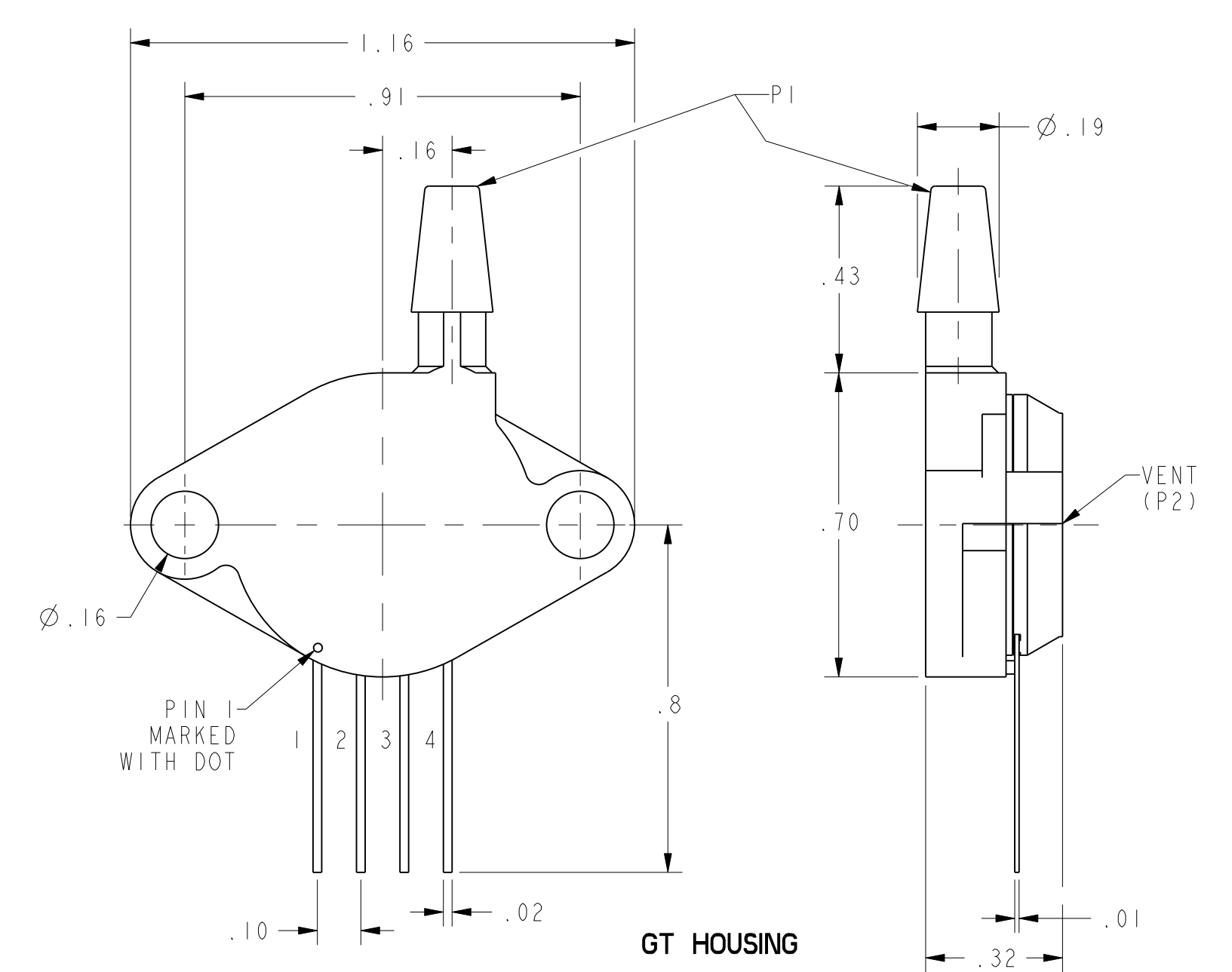
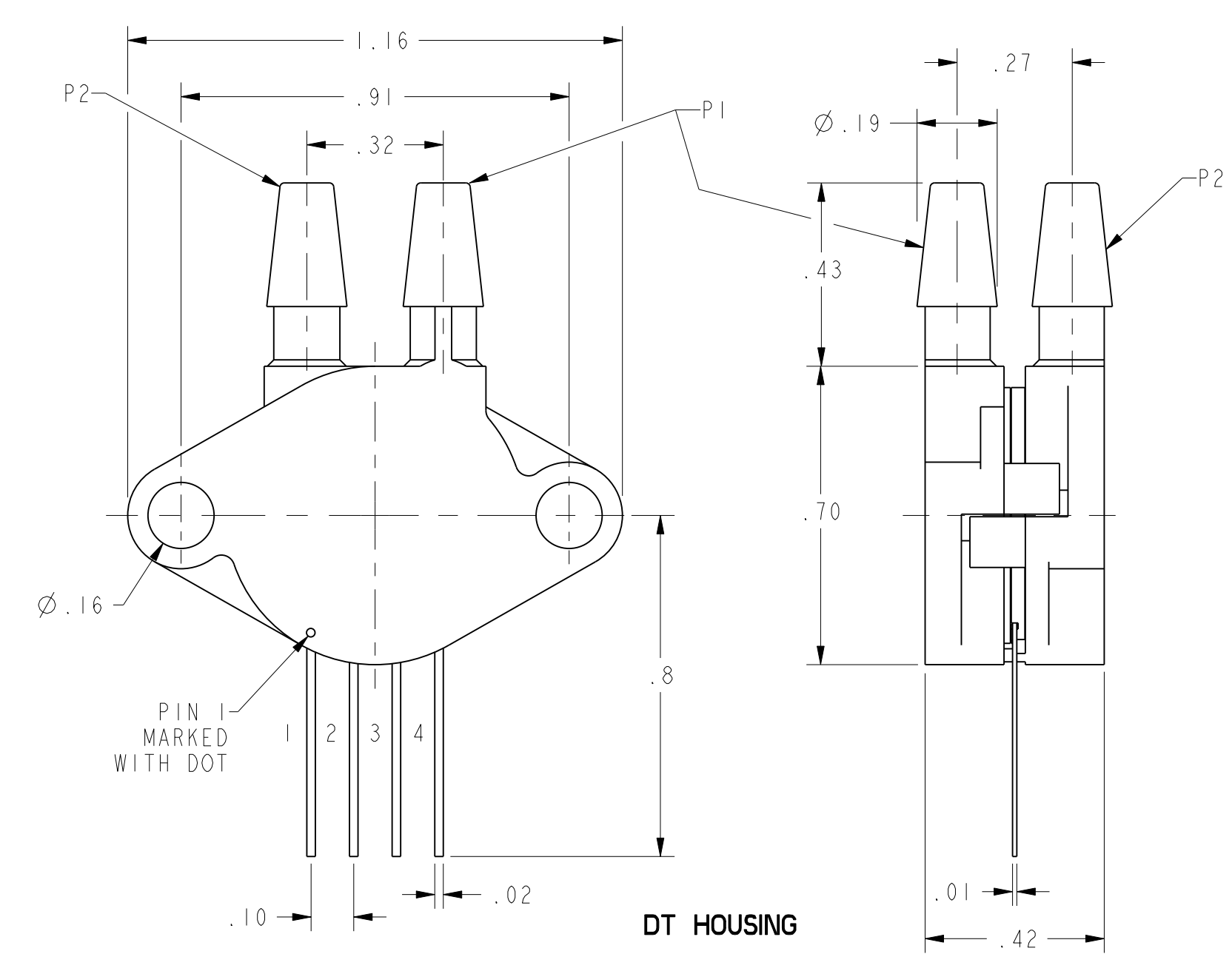
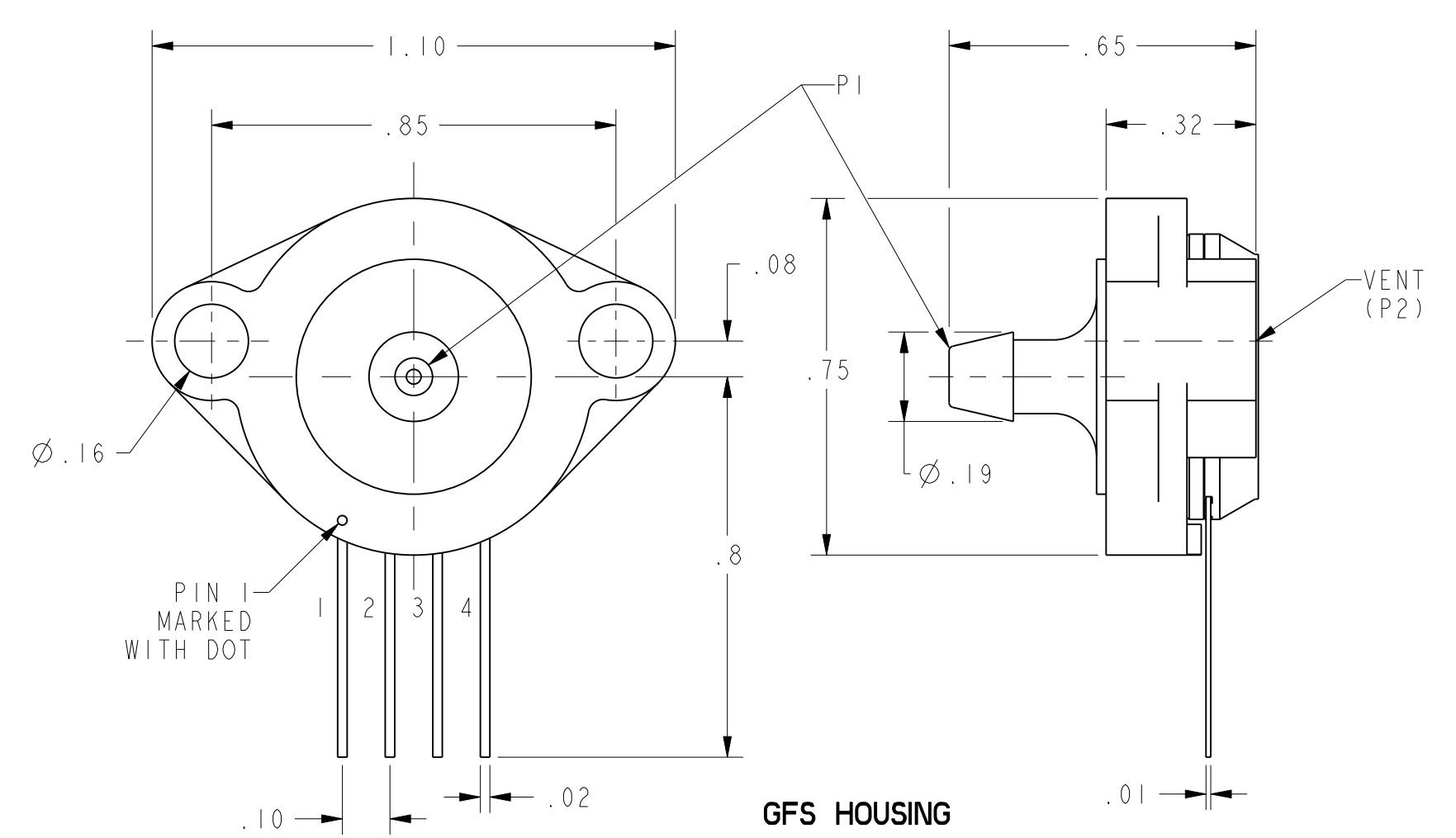
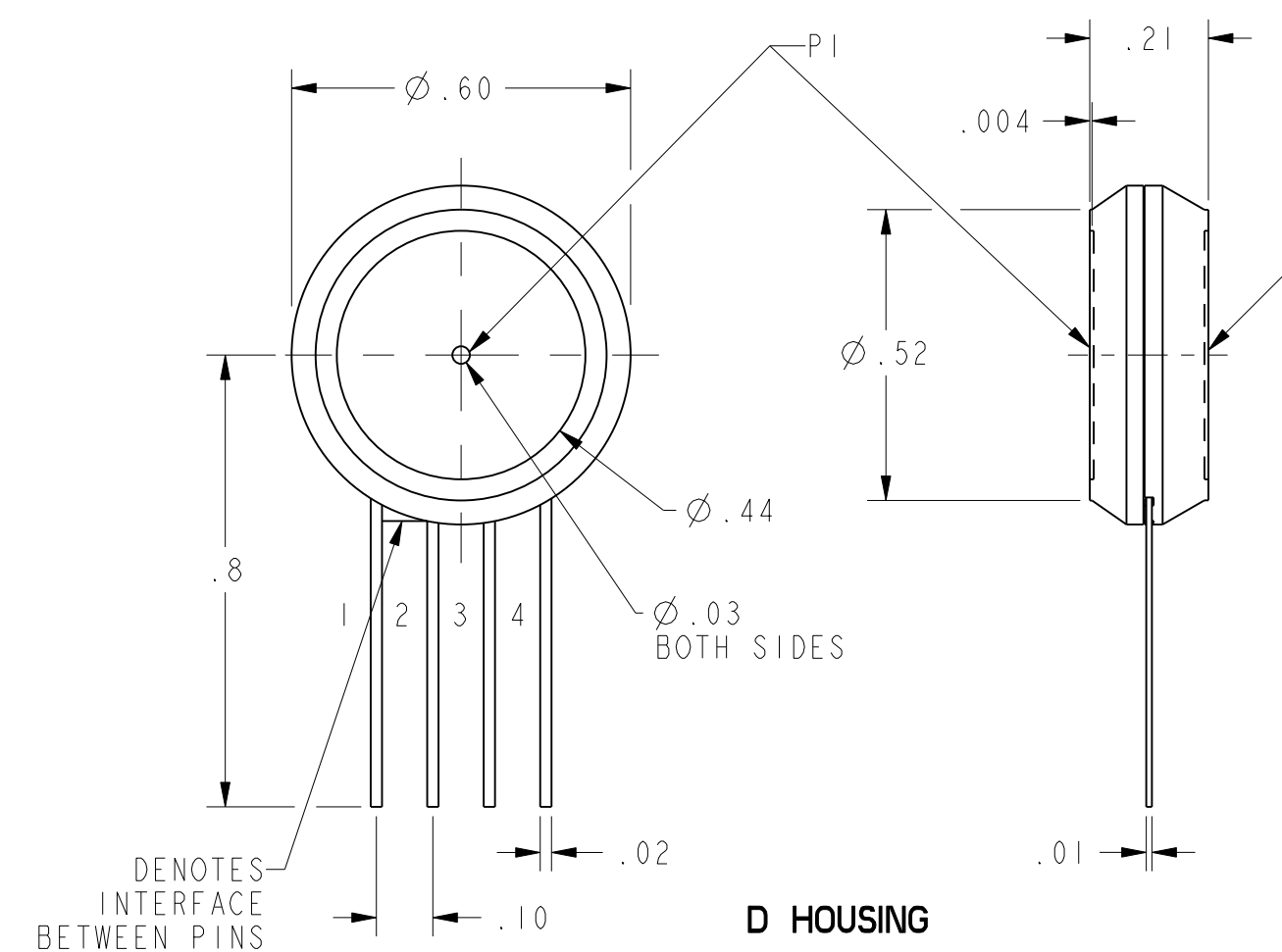


SERIES
DESIGNATES PRESSURE
L - LOW PRESSURE (IN H₂O)
PRESSURE RANGE
04, 10 IN H₂O

ACCURACY GRADE
C - COMMERCIAL GRADE
H - HIGH GRADE
PORT OPTION
F - AXIAL
T - RADIAL
FS - OFFSET AXIAL
PRESSURE REFERENCE
G - GAGE
D - DIFFERENTIAL

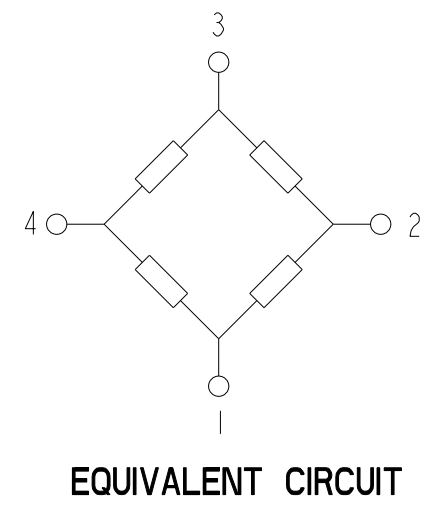
CATALOG LISTINGS

XPCL04DTC
XPCL04DC
XPCL04DFC
XPCL04GTC
⑦
XPCL10DC
XPCL10DFH
XPCL10DTC
XPCL10DTH
⑥
⑥
XPCL10DH



XPCL G/D STYLE (GAGE/DIFFERENTIAL)	PERFORMANCE AT 25°C AND 12±0.01 Vdc (UNLESS OTHERWISE STATED)										UNITS	FULL SCALE PRESSURE (IN H ₂ O)	PROOF PRESSURE PSI	BURST PRESSURE PSI		
	C-GRADE			H-GRADE												
	MIN	NOM	MAX	MIN	NOM	MAX										
OFFSET (0 IN H ₂ O) (FOR 04 ONLY)	-2	0	2													
OFFSET (0 IN H ₂ O) (FOR 10" ONLY)	-1	0	+1	-0.5	0	0.5										
4 IN H ₂ O SPAN (P1>P2)	23	25	27	N/A	N/A	N/A					4	3	5			
10 IN H ₂ O SPAN (P1>P2)	19	20	21	19.5	20	20.5					10	3	5			
NULL SHIFT OVER TEMPERATURE (0-25,25-70 °C) $\sqrt{2/3}$	---	---	±1	---	---	±.5										
SPAN SHIFT OVER TEMPERATURE (0-25,25-70 °C) $\sqrt{2/3}$	---	---	±2	---	---	±1										
COMBINED LINEARITY AND HYSTERESIS $\sqrt{4}$	---	0.25	1	---	0.25	0.5										

GENERAL OPERATING CHARACTERISTICS	ALL PRESSURES AND GRADES				UNITS
	MIN	NOM	MAX		
EXCITATION VOLTAGE	3	12	16		Vdc
SUPPLY CURRENT	---	---	3.5		mA
INPUT RESISTANCE	5	---	---		K-OHMS
OUTPUT RESISTANCE	---	3	---		K-OHMS
OPERATING TEMPERATURE	-25	---	85		°C
STORAGE TEMPERATURE	-40	---	125		°C



PIN OUT

1	- V EXCITATION
2	+ OUTPUT SIGNAL
3	+ V EXCITATION
4	- OUTPUT SIGNAL

NOTES
1 - SPAN IS THE ALGEBRAIC DIFFERENCE BETWEEN THE OUTPUT AT FULL SCALE PRESSURE AND THE OFFSET OUTPUT
2 - TEMPERATURE ERROR IS CALCULATED WITH RESPECT TO 25°C
3 - THE L04 LISTINGS HAVE A TEMPERATURE SHIFT RANGE FROM 0°C TO 25°C AND 25°C TO 50°C
4 - LINEARITY IS MEASURED AT 1/2 FULL SCALE PRESSURE USING BEST STRAIGHT LINE FIT
5 - THE OUTPUT OF THE SENSOR IS PROPORTIONAL, RATIO-METRIC, TO THE EXCITATION VOLTAGE. ALL SPECIFICATIONS WILL NOMINALLY BE CHANGED BY THE RATIO OF V_{EXCITATION}/12.0 Vdc
6 - LIMIT SOLDERING TO 315°C FOR LESS THAN 10 SECONDS
7 - INPUT MEDIA FOR P1 IS RESTRICTED TO DRY GASES ONLY

UNLESS OTHERWISE SPECIFIED TOLERANCES ARE:	ASSEMBLY	INSTRUMENT	INSTRUMENT	INSTRUMENT	INSTRUMENT
NO PLACE	±.040	±.01	±.01	±.01	±.01
ONE PLACE	±.030	±.04	±.04	±.04	±.04
TWO PLACE	±.015	±.015	±.015	±.015	±.015
THREE PLACE	±.005	±.005	±.005	±.005	±.005
ANGLES	±.005	±.005	±.005	±.005	±.005
RAW MATERIAL - COMMERCIAL STANDARD					

DRAWN	TSM	IBAPRO1
CHECK	MDM	IBAPRO1

THIS DRAWING COVERS A PROPRIETARY ITEM AND IS THE PROPERTY OF HONEYWELL. THIS DRAWING IS NOT TO BE COPIED OR USED WITHOUT THE PERMISSION OF HONEYWELL.

DIMENSIONS ARE TO BE MET BEFORE PROTECTIVE COATINGS ARE APPLIED.

PTC 3D ASME Y14.5M-1994

Honeywell

PRESSURE SENSOR

TITLE: **PRESSURE SENSOR**

SIZE: **D** DWG TYPE: **I** DRAWING NAME: **XPCL SERIES CHART 1** REV: **7**

SCALE: **3:1** SHEET: **1** OF: **1**