

**Description:** RO, 10 dBi, 5.725-5.925 GHz, NF

**Series:** Radome Omni

**PART NUMBER:** RO5810NF



### Features:

- Omnidirectional radiation pattern in H-plane
- 10/9 dBi Gain
- Stable gain and pattern across the operating band
- IP67
- N-Female connector

### Applications:

- 5 GHz ISM band
- DSRC
- WiFi 5.x GHz
- Indoor/Outdoor use

Issue: 1632

In the effort to improve our products, we reserve the right to make changes judged to be necessary.

CONFIDENTIAL AND PROPRIETARY INFORMATION

This document contains confidential and proprietary information of Pulse Electronics, Inc. (Pulse) and is protected by copyright, trade secret and other state and federal laws. Its receipt or possession does not convey any rights to reproduce, disclose its contents, or to manufacture, use or sell anything it may describe. Reproduction, disclosure or use without specific written authorization of Pulse is strictly forbidden.

For more information:

Pulse Worldwide Headquarters  
12220 World Trade Drive  
San Diego, CA 92128  
USA  
Tel: 1-858-674-8100

Pulse/Larsen Antennas  
18110 SE 34<sup>th</sup> St Bldg 2 Suite 250  
Vancouver, WA 98683  
USA  
Tel: 1-360-944-7551

Europe Headquarters  
Pulse GmbH & Do, KG  
Zeppelinstrasse 15  
Herrenberg, Germany  
Tel: 49 7032 7806 0

Pulse (Suzhou) Wireless Products Co, Inc.  
99 Huo Ju Road(#29 Bldg,4<sup>th</sup> Phase  
Suzhou New District  
Jiangsu Province, Suzhou 215009 PR China  
Tel: 86 512 6807 9998



**Description:** RO, 10 dBi, 5.725-5.925 GHz, NF**Series:** Radome Omni**PART NUMBER:** RO5810NF**ELECTRICAL SPECIFICATIONS**

Antenna Type	Collinear dipole array
Frequency	5.725-5.925 GHz
Nominal Impedance	50 $\Omega$
VSWR	2:1
Radiation Pattern	Omni
HPBW / Vertical Plane	8.5 ° $\pm$ 0.5 °
Gain (5.725-5.875 GHz)	10 dBi +/- 1 dB
Gain (5.875-5.925 GHz)	9 dBi +/- 1 dB
Efficiency	70 %
Polarization	Vertical
Power Withstanding	20 W
E.S.D. Protection	DC Grounded

**MECHANICAL SPECIFICATIONS**

Overall Length	434 mm
Weight	167.3 g
Antenna Color / Material	White / Pultruded Fiberglass, UV-Protected
Connector type	N-Female

**ENVIRONMENTAL SPECIFICATIONS**

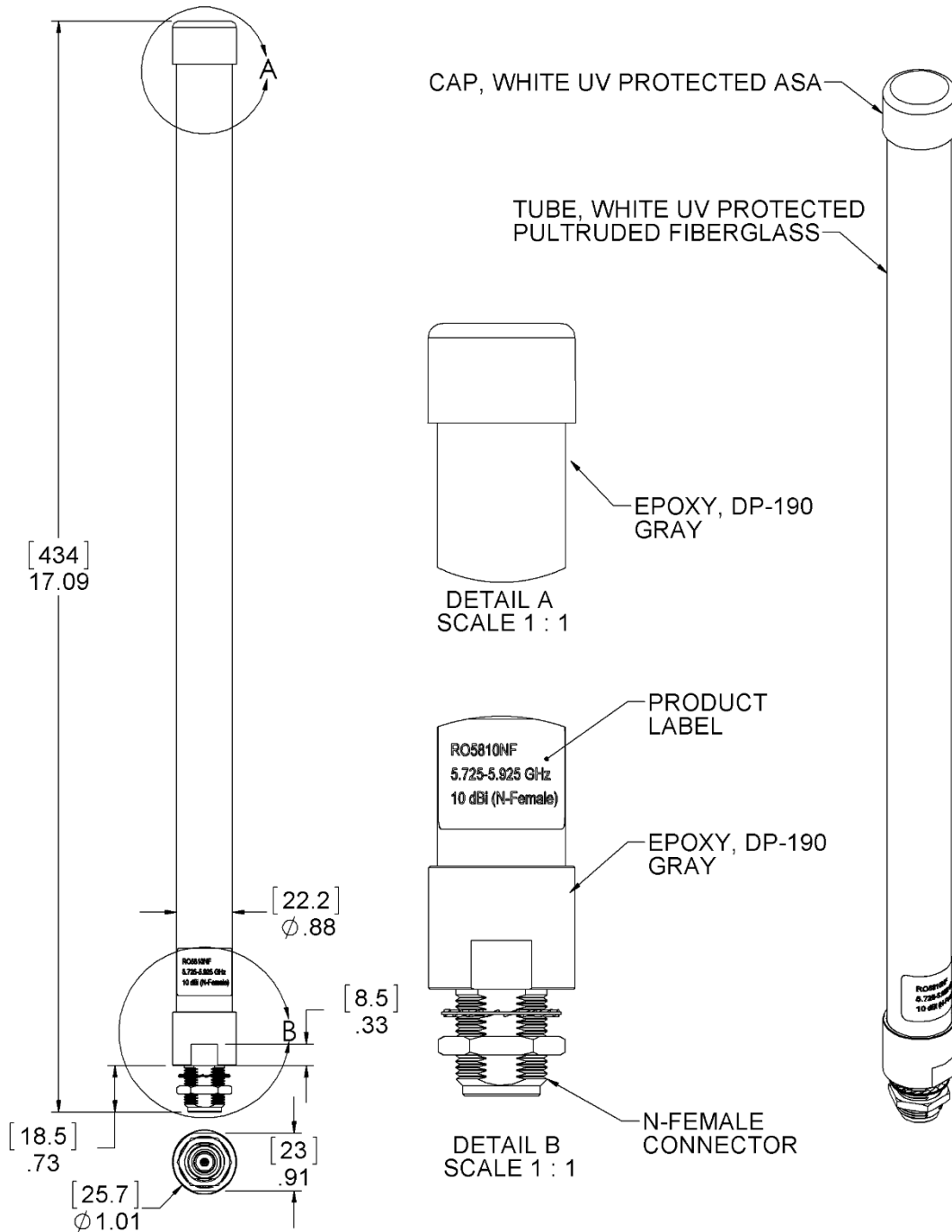
Operating Temperature	-30° to +60° C
Ingress Protection	IP67
Wind-loading	241.4 km/h
RoHS Compliant	Yes

**Description:** RO, 10 dBi, 5.725-5.925 GHz, NF

**Series:** Radome Omni

**PART NUMBER:** RO5810NF

**MECHANICAL DRAWING**



All dimensions are in mm / inches

Issue: 1632

In the effort to improve our products, we reserve the right to make changes judged to be necessary.

CONFIDENTIAL AND PROPRIETARY INFORMATION

This document contains confidential and proprietary information of Pulse Electronics, Inc. (Pulse) and is protected by copyright, trade secret and other state and federal laws. Its receipt or possession does not convey any rights to reproduce, disclose its contents, or to manufacture, use or sell anything it may describe. Reproduction, disclosure or use without specific written authorization of Pulse is strictly forbidden.

Description: RO, 10 dBi, 5.725-5.925 GHz, NF

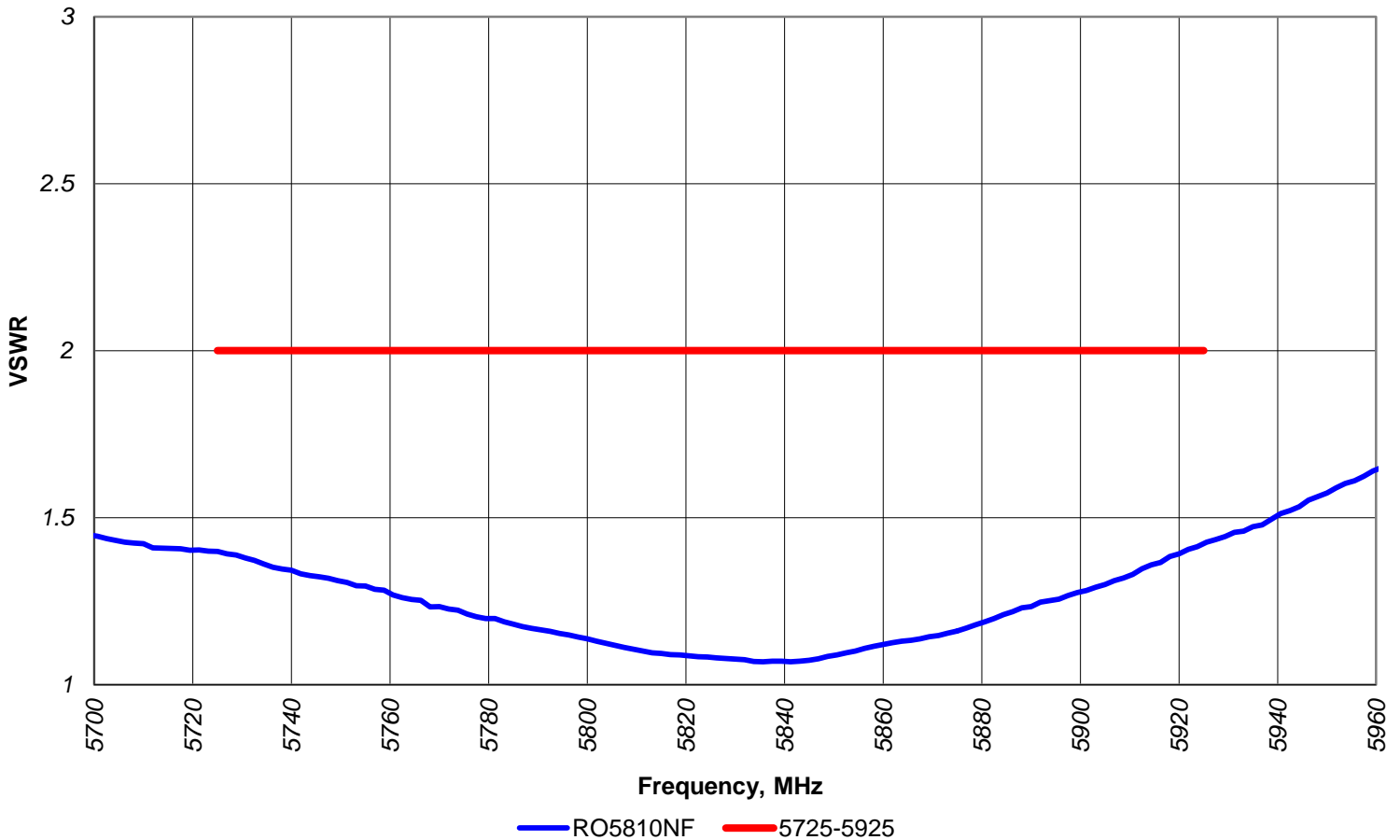
Series: Radome Omni

PART NUMBER: RO5810NF

CHARTS

VSWR vs Frequency  
RO5810NF

Measured at Pulse, USA - Aug 16, 2016



Issue: 1632

In the effort to improve our products, we reserve the right to make changes judged to be necessary.

CONFIDENTIAL AND PROPRIETARY INFORMATION

This document contains confidential and proprietary information of Pulse Electronics, Inc. (Pulse) and is protected by copyright, trade secret and other state and federal laws. Its receipt or possession does not convey any rights to reproduce, disclose its contents, or to manufacture, use or sell anything it may describe. Reproduction, disclosure or use without specific written authorization of Pulse is strictly forbidden.



Description: RO, 10 dBi, 5.725-5.925 GHz, NF

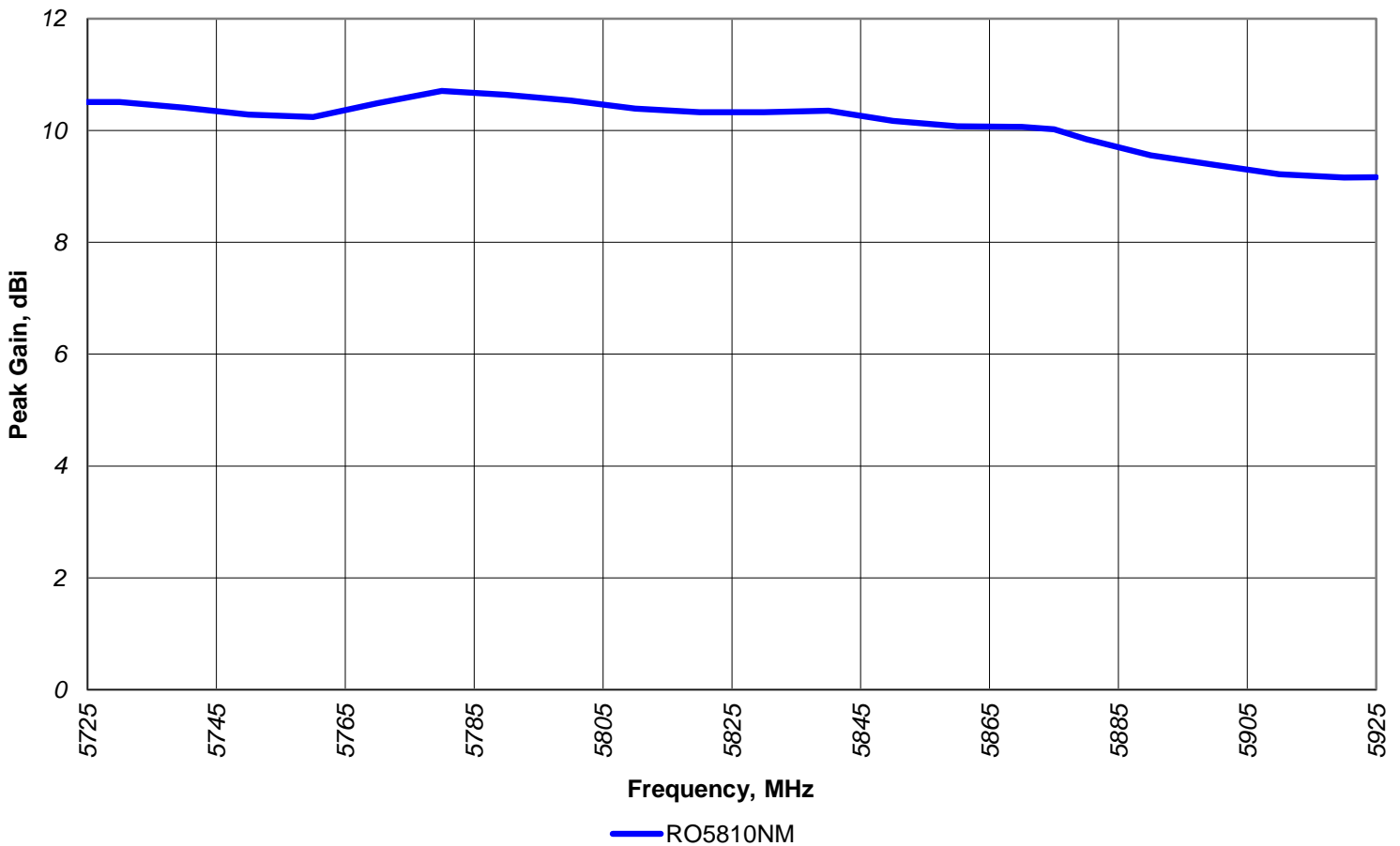
Series: Radome Omni

PART NUMBER: RO5810NF

CHARTS

Peak Gain vs Frequency  
RO5810NF

Measured at Pulse, USA - Aug. 16, 2016



Issue: 1632

In the effort to improve our products, we reserve the right to make changes judged to be necessary.

CONFIDENTIAL AND PROPRIETARY INFORMATION

This document contains confidential and proprietary information of Pulse Electronics, Inc. (Pulse) and is protected by copyright, trade secret and other state and federal laws. Its receipt or possession does not convey any rights to reproduce, disclose its contents, or to manufacture, use or sell anything it may describe. Reproduction, disclosure or use without specific written authorization of Pulse is strictly forbidden.



Description: RO, 10 dBi, 5.725-5.925 GHz, NF

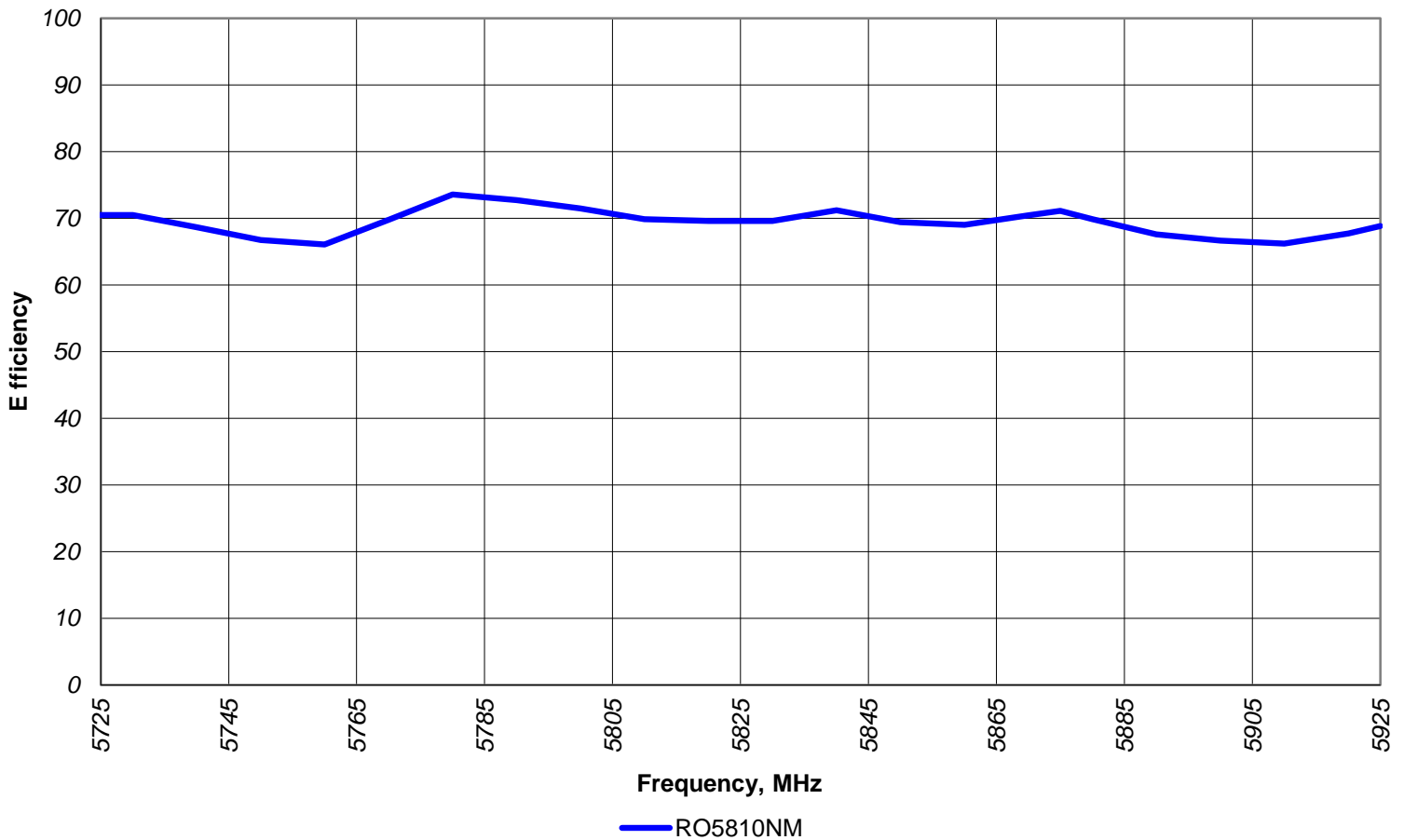
Series: Radome Omni

PART NUMBER: RO5810NF

CHARTS

Efficiency vs Frequency  
RO5810NF

Measured at Pulse, USA - Aug. 16, 2016



Issue: 1632

In the effort to improve our products, we reserve the right to make changes judged to be necessary.

CONFIDENTIAL AND PROPRIETARY INFORMATION

This document contains confidential and proprietary information of Pulse Electronics, Inc. (Pulse) and is protected by copyright, trade secret and other state and federal laws. Its receipt or possession does not convey any rights to reproduce, disclose its contents, or to manufacture, use or sell anything it may describe. Reproduction, disclosure or use without specific written authorization of Pulse is strictly forbidden.

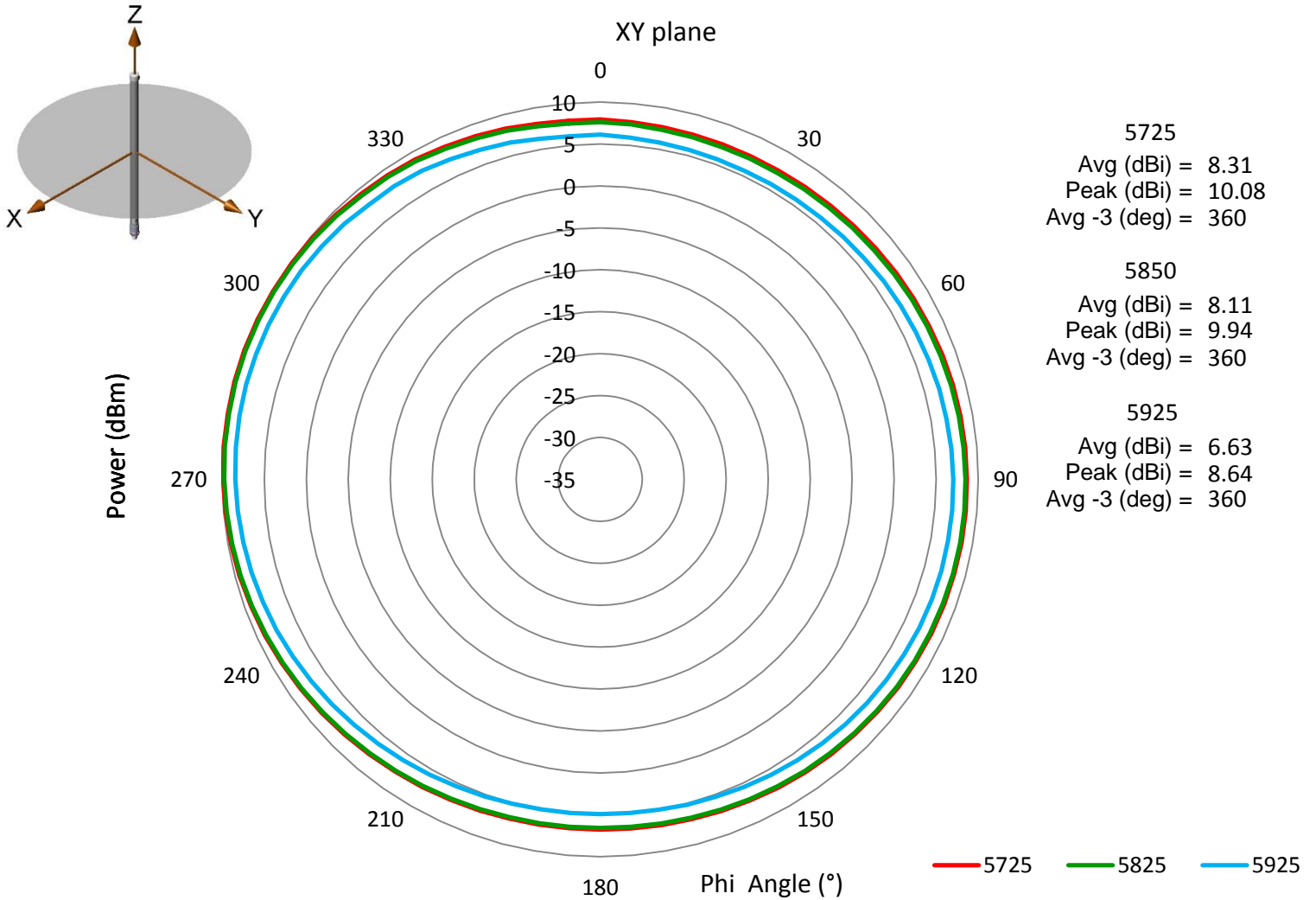


Description: RO, 10 dBi, 5.725-5.925 GHz, NF

Series: Radome Omni

PART NUMBER: RO5810NF

CHARTS



Issue: 1632

In the effort to improve our products, we reserve the right to make changes judged to be necessary.

CONFIDENTIAL AND PROPRIETARY INFORMATION

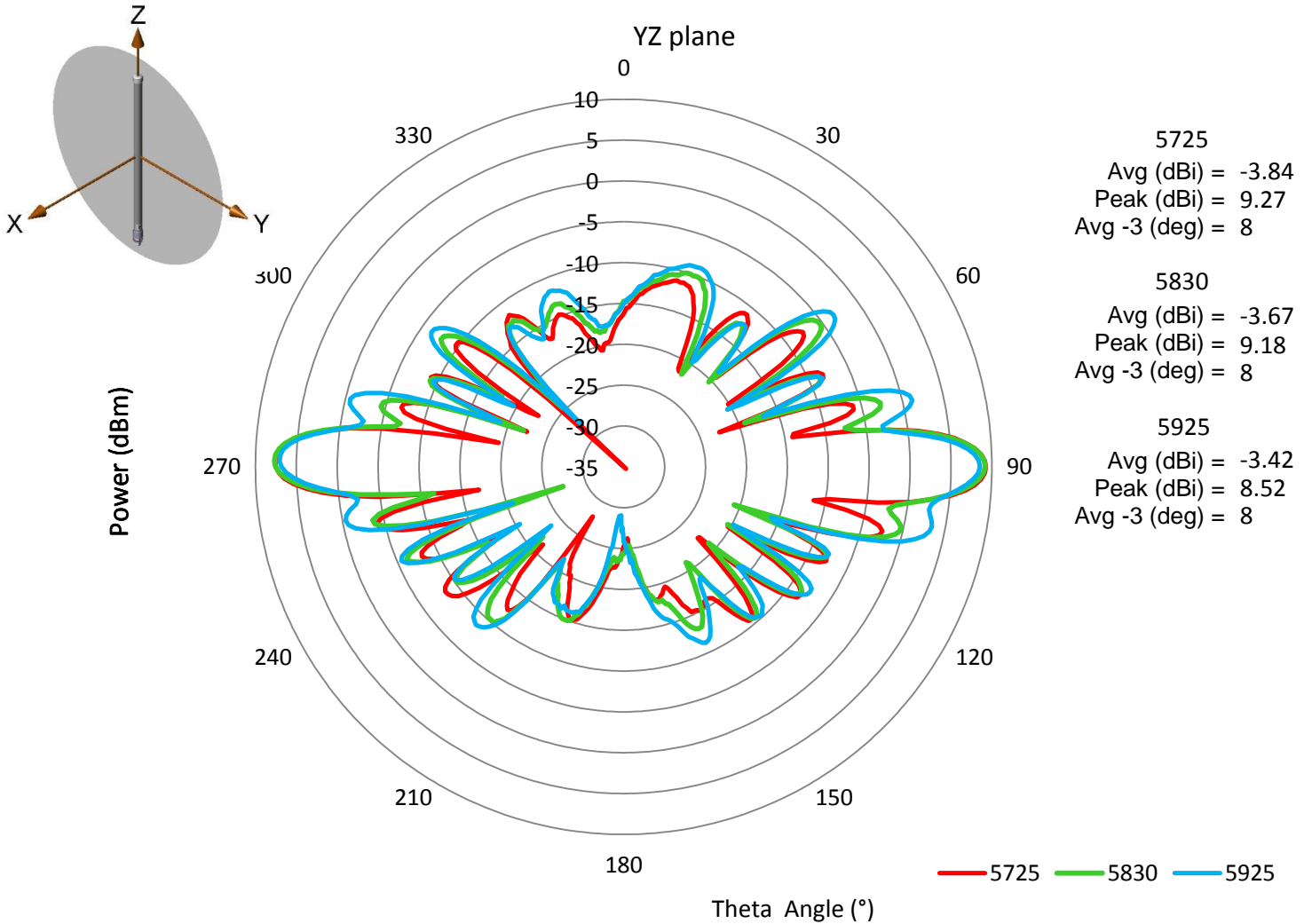
This document contains confidential and proprietary information of Pulse Electronics, Inc. (Pulse) and is protected by copyright, trade secret and other state and federal laws. Its receipt or possession does not convey any rights to reproduce, disclose its contents, or to manufacture, use or sell anything it may describe. Reproduction, disclosure or use without specific written authorization of Pulse is strictly forbidden.

Description: RO, 10 dBi, 5.725-5.925 GHz, NF

Series: Radome Omni

PART NUMBER: RO5810NF

CHARTS



Issue: 1632

In the effort to improve our products, we reserve the right to make changes judged to be necessary.

CONFIDENTIAL AND PROPRIETARY INFORMATION

This document contains confidential and proprietary information of Pulse Electronics, Inc. (Pulse) and is protected by copyright, trade secret and other state and federal laws. Its receipt or possession does not convey any rights to reproduce, disclose its contents, or to manufacture, use or sell anything it may describe. Reproduction, disclosure or use without specific written authorization of Pulse is strictly forbidden.



**Description:** RO, 10 dBi, 5.725-5.925 GHz, NF

**Series:** Radome Omni

**PART NUMBER:** RO5810NF

## PACKAGING

Packaged one product per Poly-bag with product label attached to outside of bag.

## ASSEMBLY

Issue: 1632

In the effort to improve our products, we reserve the right to make changes judged to be necessary.

CONFIDENTIAL AND PROPRIETARY INFORMATION

This document contains confidential and proprietary information of Pulse Electronics, Inc. (Pulse) and is protected by copyright, trade secret and other state and federal laws. Its receipt or possession does not convey any rights to reproduce, disclose its contents, or to manufacture, use or sell anything it may describe. Reproduction, disclosure or use without specific written authorization of Pulse is strictly forbidden.