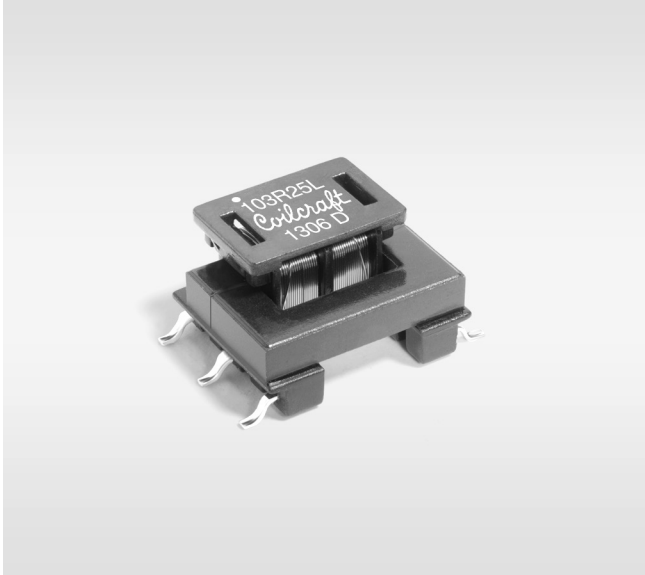


**NEW!**

# SMT Common Mode Chokes – SBU9



- Low profile, surface mount design
- Eliminates most line conducted common mode noise.
- Provides significant attenuation of common mode noise across a broad range of frequencies.
- 1500 Vrms, one minute isolation between windings.

**Core material** Ferrite

**Terminations** RoHS compliant tin-silver over copper.

**Weight** 2.4 – 2.7 g

**Ambient temperature** –40°C to +125°C

**Storage temperature** Component: –40°C to +125°C.

Tape and reel packaging: –40°C to +80°C

**Moisture Sensitivity Level (MSL)** 1 (unlimited floor life at <30°C / 85% relative humidity)

**Failures in Time (FIT) / Mean Time Between Failures (MTBF)**

38 per billion hours / 26,315,789 hours, calculated per Telcordia SR-332

**Packaging** 350/13" reel; Plastic tape: 32 mm wide, 0.5 mm thick, 20 mm pocket spacing, 8.5 mm pocket depth

**PCB washing** Tested with pure water or alcohol only. For othersolvents, see Doc787\_PCB\_Washing.pdf

Part number <sup>1</sup>	Impedance max (kOhms)	Frequency range @ 75% of impedance max	DCR <sup>2</sup> (Ohms)	I <sub>rms</sub> <sup>3</sup> max (A)	Inductance <sup>4</sup> L1, L2 min (mH)	Inductance difference L1 - L2 max (μH)
SBU9-103R25L_	112 @ 226 kHz	243–284	2.5	0.25	10.0	200
SBU9-2820R5L_	30.0 @ 563 kHz	462–671	0.70	0.50	2.8	50
SBU9-1320R7L_	15.9 @ 857 kHz	691–1059	0.38	0.70	1.3	50
SBU9-6011R0L_	7.99 @ 1250 kHz	920–1673	0.20	1.00	0.6	25

1. When ordering, please specify **packaging** code:

**SBU9-6011R0LD**

**Packaging:** D = 13" machine-ready reel. EIA-481 embossed plastic tape 350 parts per full reel).

B = Less than full reel. In tape, but not machine ready. To have a leader and trailer added (\$25 charge), use code letter D instead.

2. DCR is per winding.

3. Current that causes a 40°C rise from 25°C ambient.

4. Inductance tested at 1 kHz, 1 Vrms, 0 Adc on an Agilent/HP 4284A LCR-meter or equivalent.

5. Electrical specifications at 25°C.

Refer to Doc 362 "Soldering Surface Mount Components" before soldering.



Dimensions are in  $\frac{\text{inches}}{\text{mm}}$



www.coilcraft.com

**US** +1-847-639-6400 sales@coilcraft.com

**UK** +44-1236-730595 sales@coilcraft-europe.com

**Taiwan** +886-2-2264 3646 sales@coilcraft.com.tw

**China** +86-21-6218 8074 sales@coilcraft.com.cn

**Singapore** + 65-6484 8412 sales@coilcraft.com.sg

Document 1102-1 Revised 03/25/13

© Coilcraft Inc. 2013

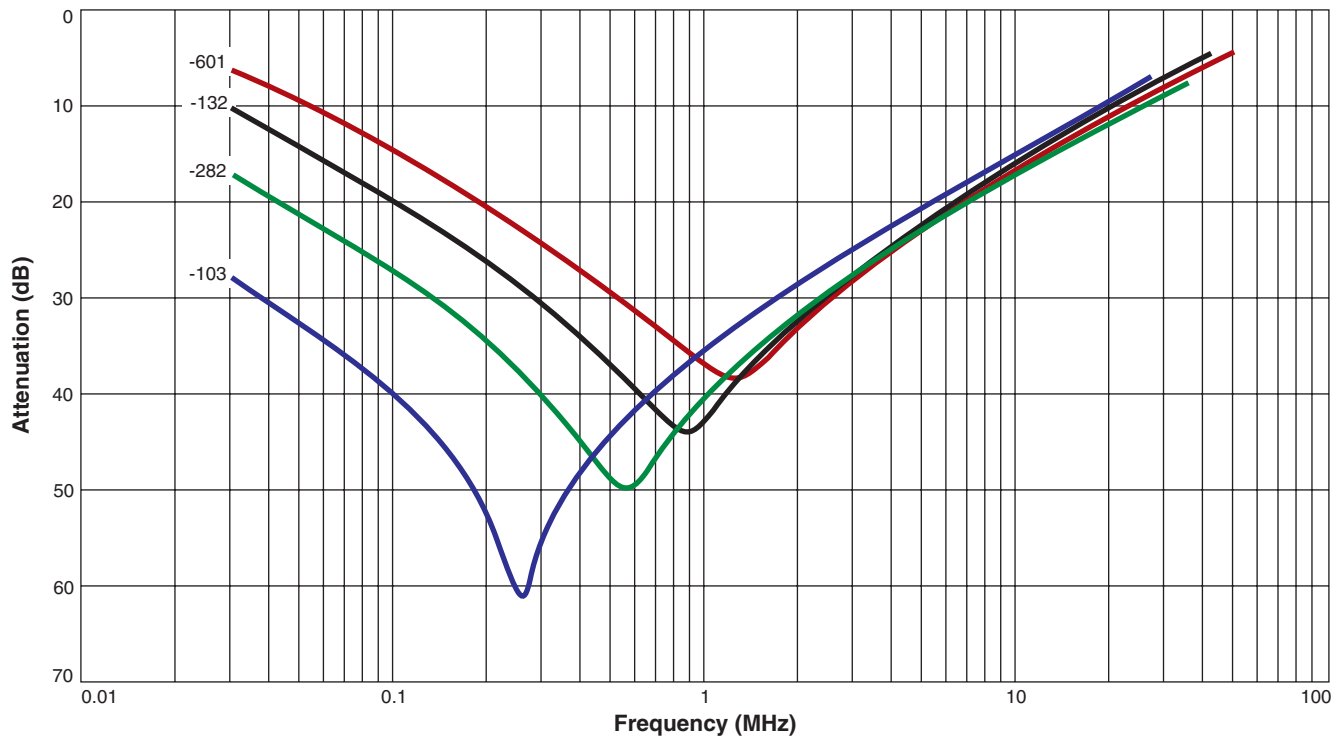
This product may not be used in medical or high risk applications without prior Coilcraft approval. Specification subject to change without notice. Please check web site for latest information.

**NEW!**

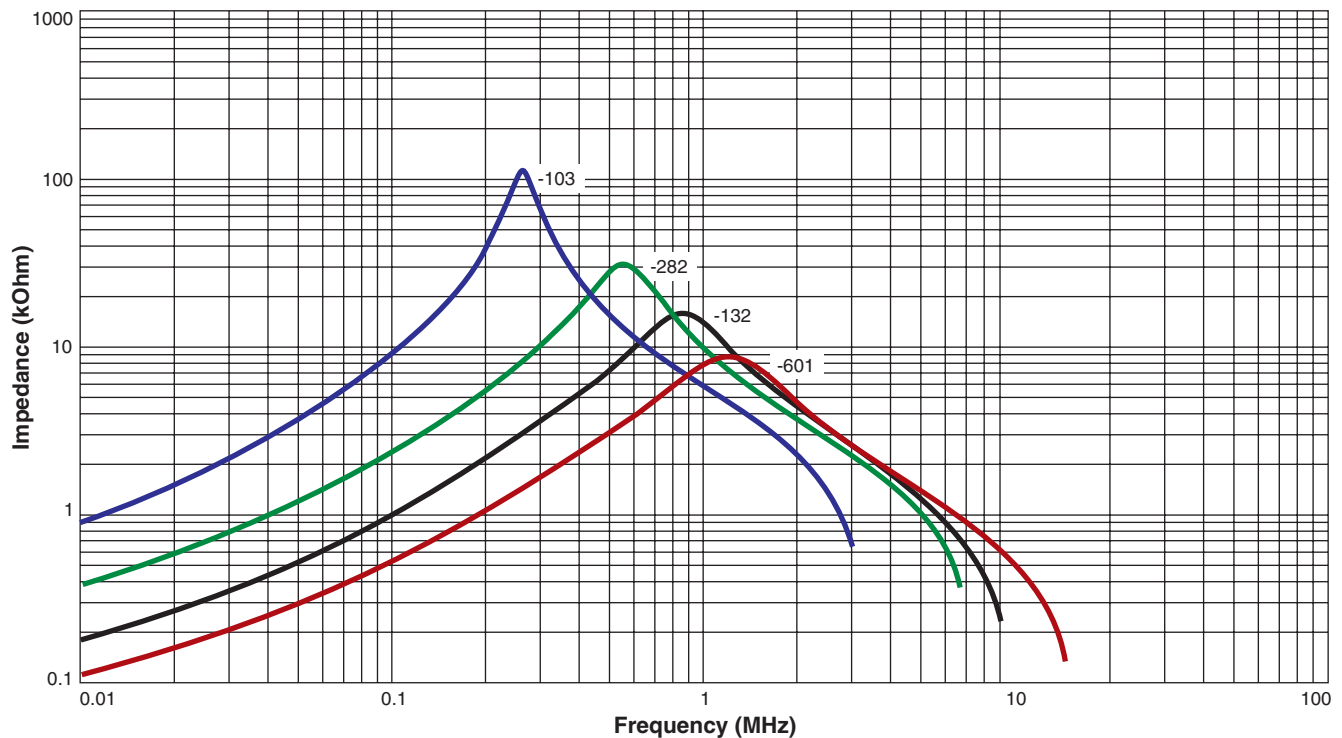
# Common Mode Chokes – SBU9 Series



## Typical Attenuation (Ref 50 Ohms)



## Typical Impedance



**US** +1-847-639-6400 sales@coilcraft.com  
**UK** +44-1236-730595 sales@coilcraft-europe.com  
**Taiwan** +886-2-2264 3646 sales@coilcraft.com.tw  
**China** +86-21-6218 8074 sales@coilcraft.com.cn  
**Singapore** + 65-6484 8412 sales@coilcraft.com.sg

Document 1102-2 Revised 03/25/13  
 © Coilcraft Inc. 2013  
 This product may not be used in medical or high risk applications without prior Coilcraft approval. Specification subject to change without notice. Please check web site for latest information.