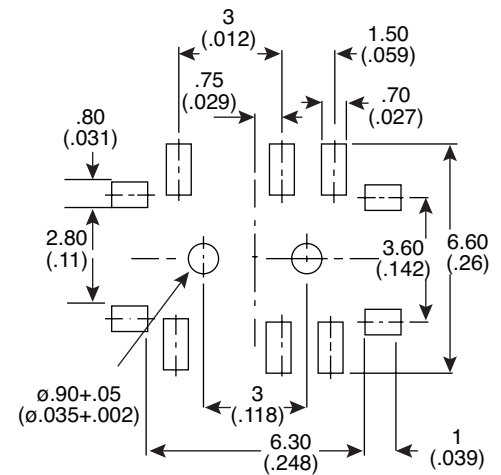
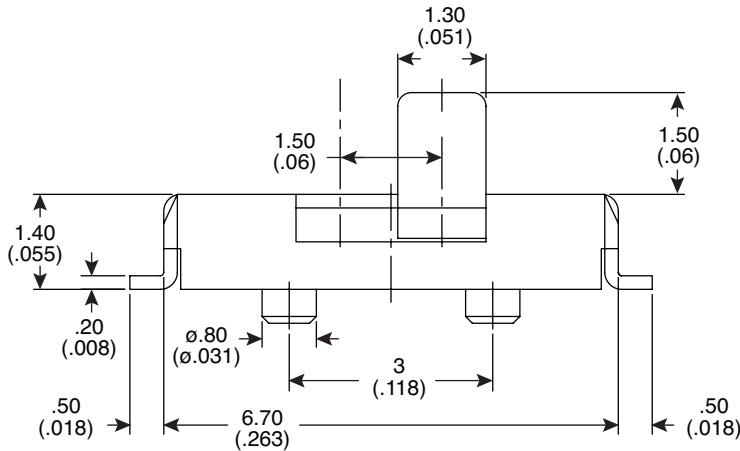
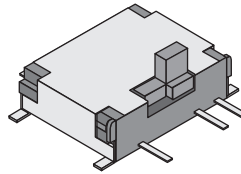
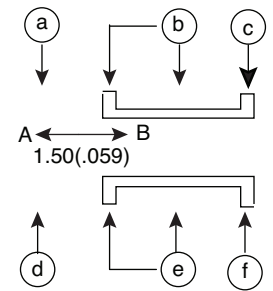
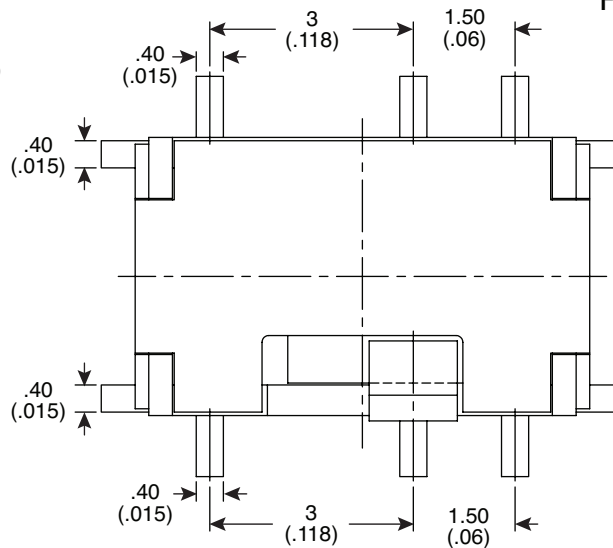
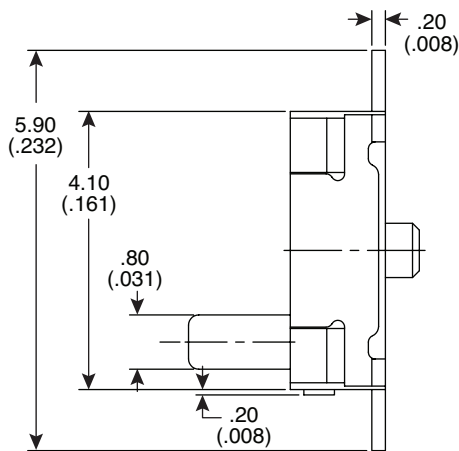


Dimensions: mm (in.)



PCB Layout



Circuit Diagram

**Electrical Specifications:**

- Rating: Non-Switching-300mA/4VDC
- Switching-25mA/24VDC
- Contact Resistance: 70mΩ max.
- Insulation Resistance: 100MΩ min.
- Dielectric Strength: 100VAC for 1 min.

**Mechanical Specifications:**

- Operating Temperature: -20°C~+70°C
- Storage Temperature: -40°C~+85°C
- Tolerance: ±.20mm

**Note:**

- RoHS Compliant and Process Compatible with 260° solder

Miniature Slide Switch (SMT)  
103-5042-EV

