

Features

- Low Loss
- Excellent Return Loss
- High Rejection

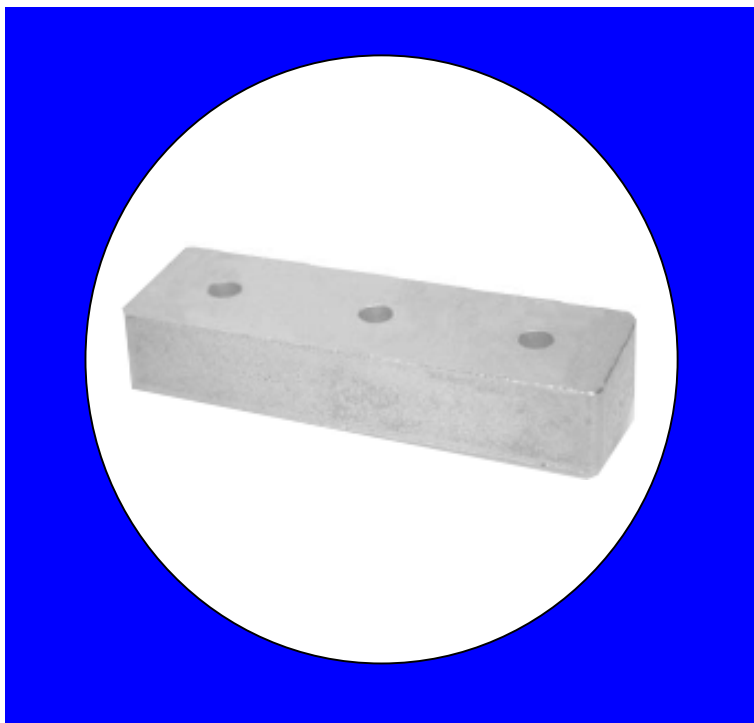
Description

Rugged mount, silver (Ag) coated ceramic filter. Developed for use in Commercial and Military GPS applications.

Weight: 11.0 grams typical

Material: Filter is composed of a ceramic block plated with Ag.

Filter complies with RoHS standards.

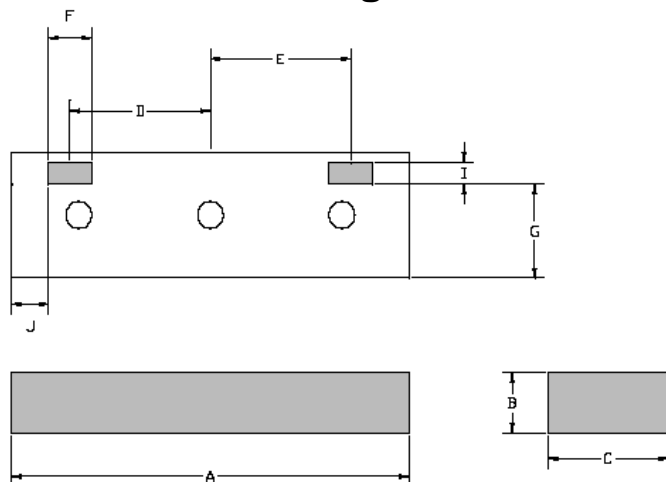
**Electrical Specifications**

Parameter	Frequency (MHz)	Typical @ 25°C	Spec. @ 25°C
Passband Insertion Loss	1565.4-1585.4	0.8 dB	1.0 dB max
Passband Return Loss	1500.4	19.0 dB	12.0 dB min
Attenuation	1650.4	34.0 dB	29.0 dB min
Power Rating			1W
Impedance			50Ω

Note: Supplier shall test each filter to the critical electrical specifications of the above table. Any subsequent audits may deviate from in value due to measurement repeatability among different test systems. Such deviations shall not exceed the following limits:

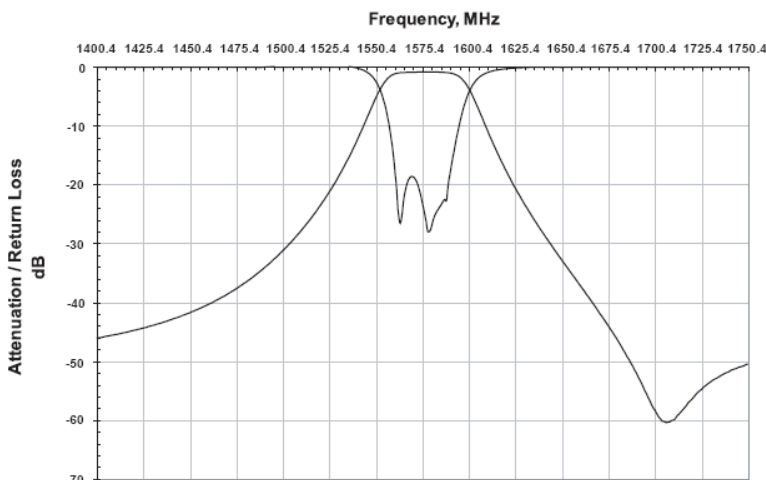
Specification Allowance	
Insertion Loss	0.1 dB
Return Loss	1.0 dB
Stopbands	1.0 dB

Mechanical Drawing

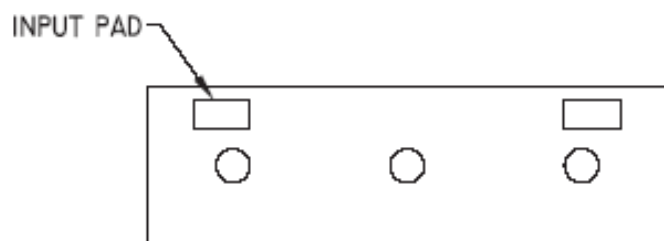


Dim	Nominal (mm)	Tolerance (mm) +/- or max
A	38.60	max
B	5.70	max
C	11.75	max
D	13.63	0.127
E	13.63	0.127
F	4.2	0.127
G	8.64	0.254
I	2.02	0.127
J	3.36	0.254

Electrical response

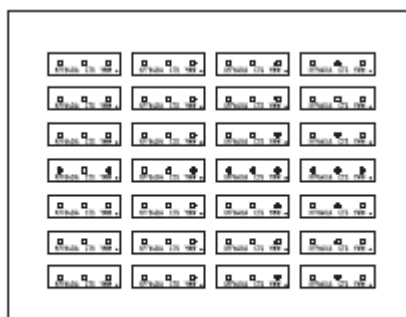
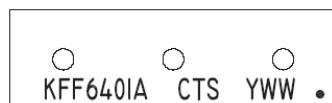


PCB Layout



NOTE: MOUNTING IS CUSTOMER SPECIFIC.

Packaging and Marking



7 28 Slot Foam Trays
(560 max. per box)

This product is shipped in pre-formed foamed trays.