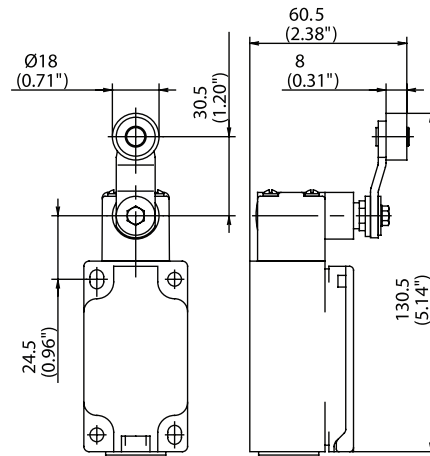


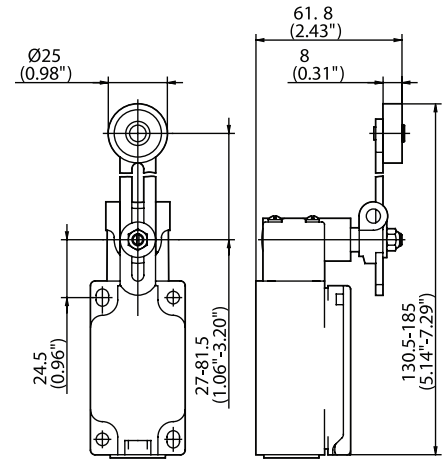
**ENK Series**



**AHS-V (Form A)**



**AV**

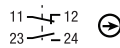


**Switching Operation**

**1 NC / 1 NO Contacts**

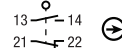
**Slow Action**

**608.1135.003**  
ENK-U1Z AHS-V



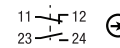
**Snap Action**

**608.1185.009**  
ENK-SU1Z AHS-V



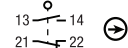
**Slow Action**

**608.1136.012**  
ENK-U1 AV



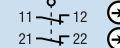
**Snap Action**

**608.1186.018**  
ENK-SU1 AV



**2 NC Contacts**

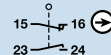
**608.1835.323**  
ENK-A2Z AHS-V



**2 NO Contacts**

**1 NC / 1 NO Contacts Overlapping**

**608.1335.006**  
ENK-UV1Z AHS-V



**Replacement actuator:**

**391.8350.737**

**391.8360.738**

**Technical Information**

|                                  | Slow Action          | Snap Action          |
|----------------------------------|----------------------|----------------------|
| Maximum Switching Voltage        | 240V                 | 240V                 |
| Max. Switching Amps (up to)*     | 10A                  | 10A                  |
| B10d (up to)*                    | 20 Million           | 20 Million           |
| Mechanical Service Life (up to)* | 3 x 10 <sup>6</sup>  | 10 x 10 <sup>5</sup> |
| Switching Frequency              | ≤ 100/min            | ≤ 100/min            |
| Operating Temperature            | -30 °C to +80 °C     | -30 °C to +80 °C     |
| Protection Rating                | IP65                 | IP65                 |
| Utilization Category (up to)*    | AC-15, Ue/Ue 240V 3A | AC-15, Ue/Ue 240V 3A |
| Rate Insulation Voltage          | 400VAC               | 400VAC               |

Approvals

\* Depending on switching system - see technical information for details



**Special features/variants** (on request)

- Available with black enclosure
- With 50 mm diameter rubber roller
- 3 NC contacts possible

**Special features/variants** (on request)

- Available with different lever lengths
- With 50 mm diameter rubber roller

Drawing dimensions in mm