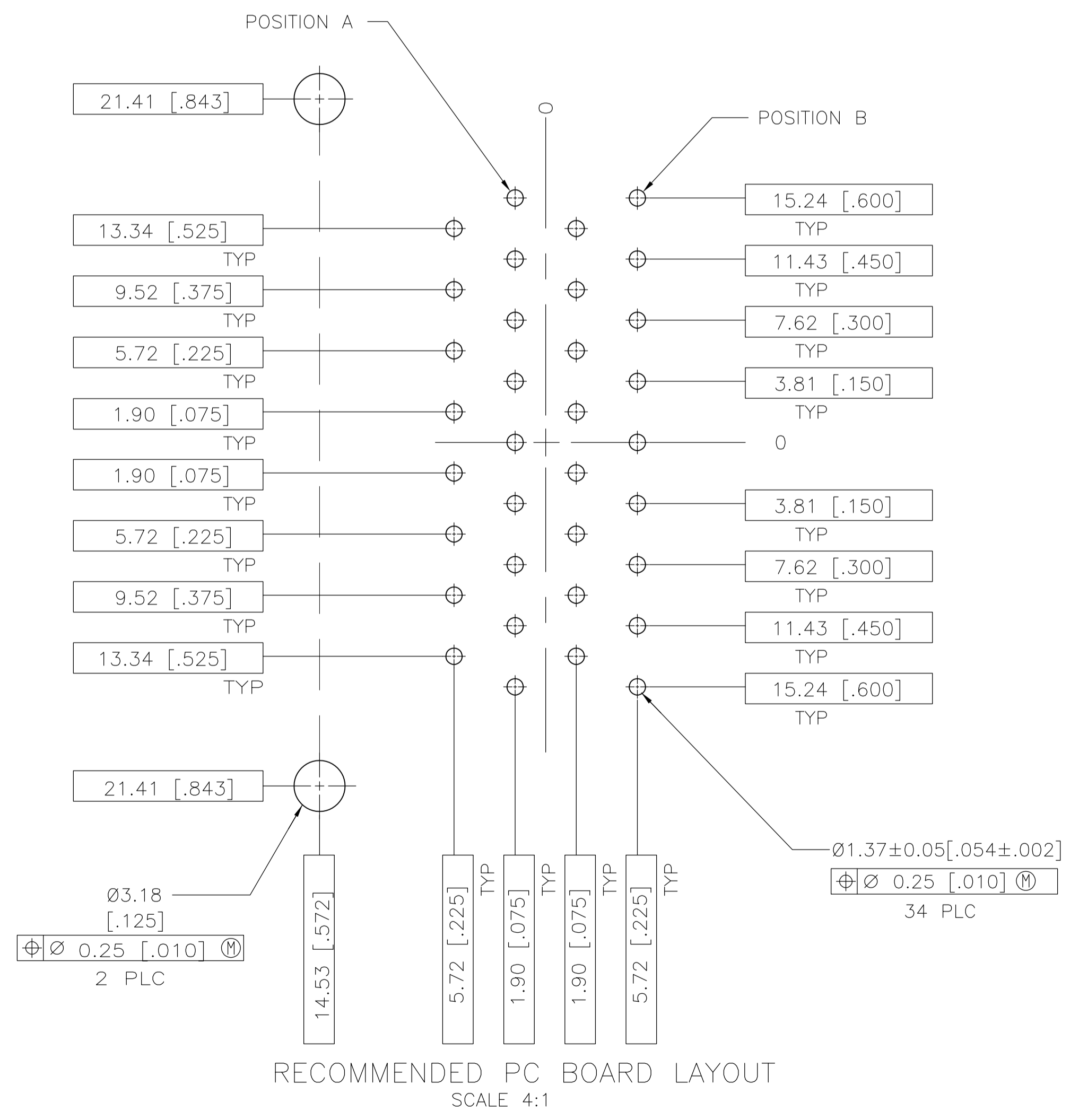
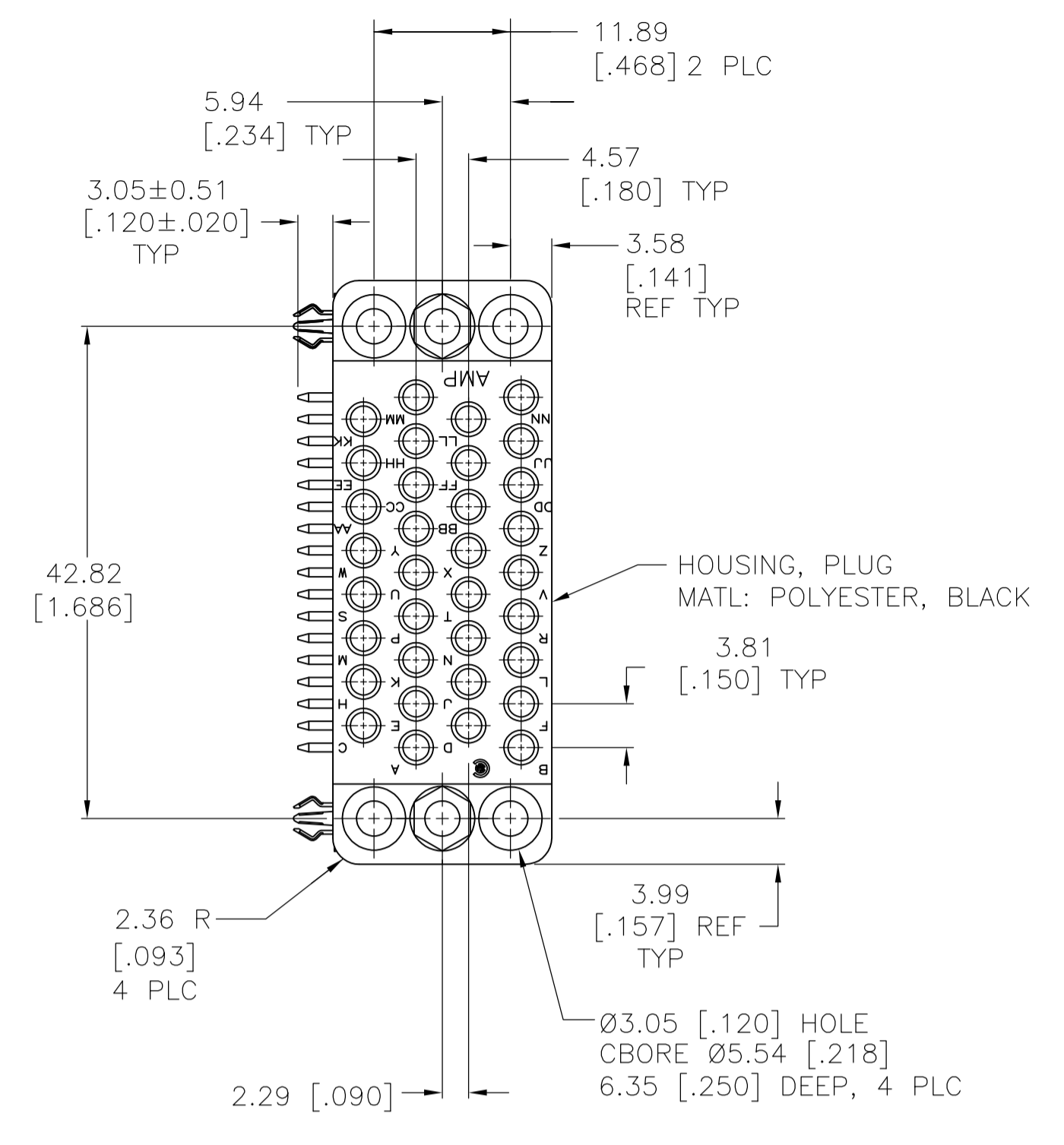
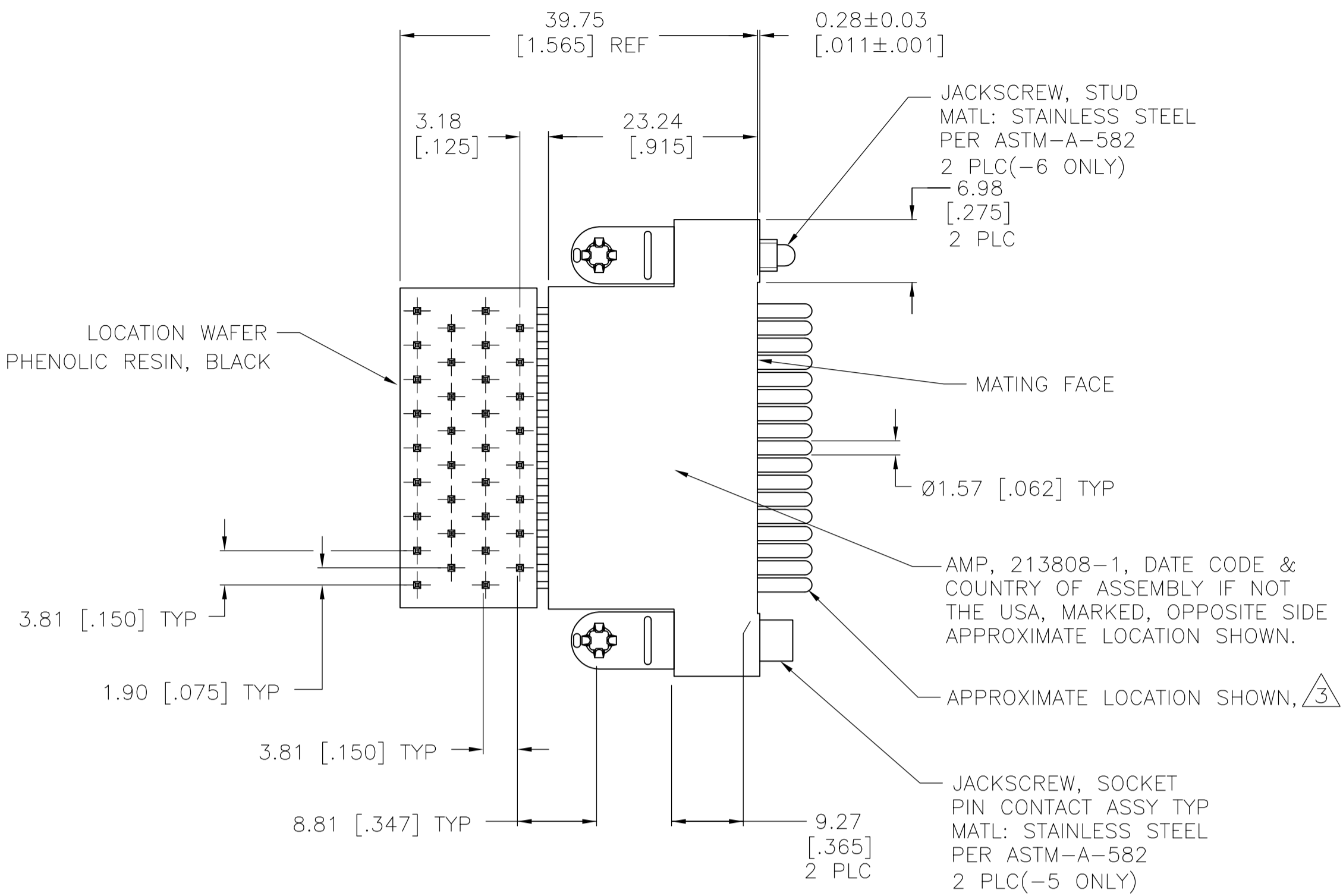
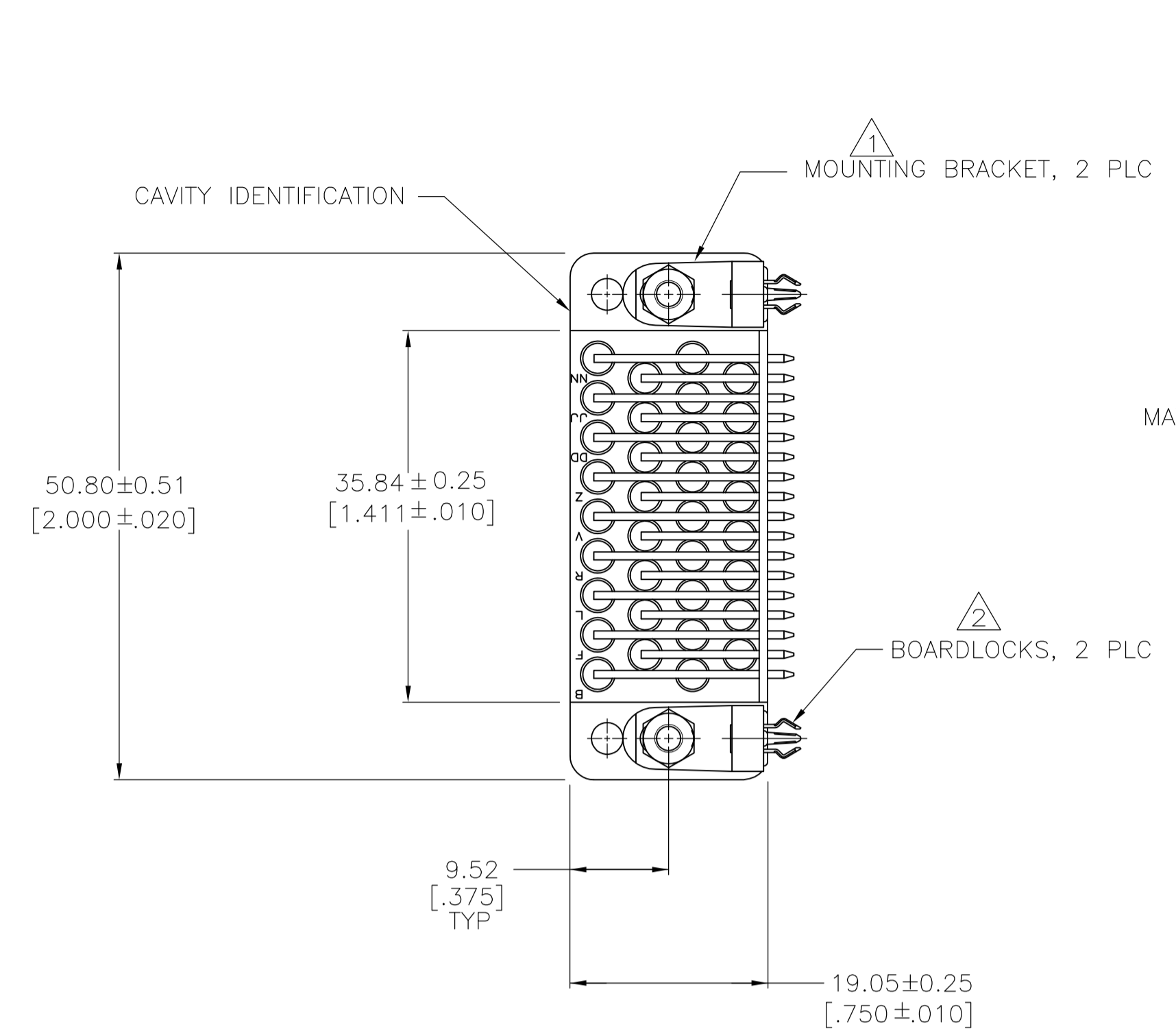


REVISIONS					
REV	DATE	DESCRIPTION	BY	CHK	APPV
E4	21SEP2016	REVISED PER ECO-16-013463		NK	MZ
F	28FEB2017	REVISED PER ECR-17-002064		RS	MZ



- HEX NUT, 2 PLC MATL: CARBON STEEL PER QQ-S-637 FINISH: ZINC PER ASTM-B-633
- LOCKWASHER, 2 PLC MATL: STAINLESS STEEL PER QQ-S-766 FINISH: PASSIVATED (CRESCENT SPRING WASHER -5,-6 & -7 ONLY)
- MOUNTING BRACKET: MATERIAL: ZINC PER QQ-Z-363. FINISH: 3.81um [0.000150] MIN NICKEL PER QQ-N-290 OVER 2.54um [0.000100] MIN COPPER PER MIL-C-14550.
- BOARDLOCK: MATERIAL: COPPER ALLOY PER ASTM-B-592. FINISH: 5.08um [0.000200] MIN TIN-LEAD PER MIL-T-10727 OVER 1.27um [0.000050] MIN NICKEL PER QQ-N-290.
- PIN CONTACT ASSEMBLY: BODY MATERIAL: BRASS PER MIL-C-50. FINISH: 0.76um [0.000030] MIN GOLD PER MIL-G-45204 FOR A LENGTH OF 5.08 [0.200] MIN FROM MATING END, 2.54um [0.000100] MIN TIN-LEAD PER MIL-T-10727 FOR A LENGTH OF 6.35 [0.250] MIN FROM OPPOSITE END, BOTH OVER 1.27um [0.000050] MIN NICKEL PER QQ-N-290. SPRING-MATERIAL: STAINLESS STEEL PER QQ-S-766. POST-MATERIAL: BRASS PER ASTM-B-134. FINISH: 2.54um [0.000100] MIN TIN-LEAD PER MIL-T-10727 OVER 1.27um [0.000050] MIN NICKEL PER QQ-N-290.
- PIN CONTACT ASSEMBLIES ARE SELECTIVELY LOADED INTO HOUSING AND LOCATION WAFER AT CIRCUITS A,B,C,D,E,F,H,K,P,R,S,T,U,V,W,X,Y AND AA. NO HARDWARE IS SUPPLIED.
- PIN CONTACT ASSEMBLY: BODY MATERIAL: BRASS PER MIL-C-50. FINISH: 0.76um [0.000030] MIN GOLD PER MIL-G-45204 FOR A LENGTH OF 5.08 [0.200] MIN FROM MATING END, 2.54um [0.000100] MIN TIN-LEAD PER MIL-T-10727 FOR A LENGTH OF 6.35 [0.250] MIN FROM OPPOSITE END, BOTH OVER 1.27um [0.000050] MIN NICKEL PER QQ-N-290. SPRING-MATERIAL: STAINLESS STEEL PER QQ-S-766. POST-MATERIAL: BRASS PER ASTM-B-134. FINISH: 2.54um [0.000100] MIN TIN PER MIL-T-10727 OVER 1.27um [0.000050] MIN NICKEL PER QQ-N-290.
- BOARDLOCK: MATERIAL: COPPER ALLOY PER ASTM-B-592. FINISH: 5.08um [0.000200] MIN TIN PER MIL-T-10727 OVER 1.27um [0.000050] MIN NICKEL PER QQ-N-290.
- OBSOLETE PARTS: OBSOLETE CIS STREAMLINING PER D.RENAUD/D.SINISI

REV	DESCRIPTION	DATE	BY	CHK	APPV
7	OBSOLETE				
6	OBSOLETE				
5	OBSOLETE				
4	OBSOLETE				
3	OBSOLETE				
2	OBSOLETE				
1	SUPERSEDED				

THIS DRAWING IS A CONTROLLED DOCUMENT. DIN D.BROCKWAY 08-22-94. R.STONE 09-08-94.

TE Connectivity

CONNECTOR ASSEMBLY, PIN, 34 POSITION, RIGHT ANGLE, M SERIES

SIZE: A1, CASE CODE: 00779, DRAWING NO: 213808, WEIGHT: --, RESTRICTED TO: --

CUSTOMER DRAWING, SCALE: 2:1, SHEET: 1 OF 1, REV: F