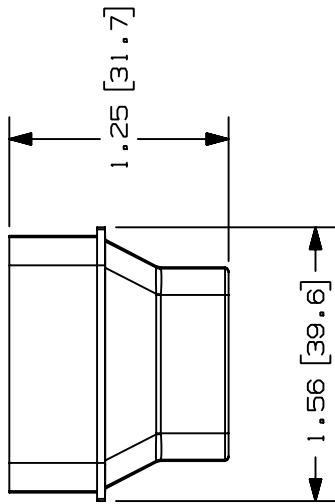
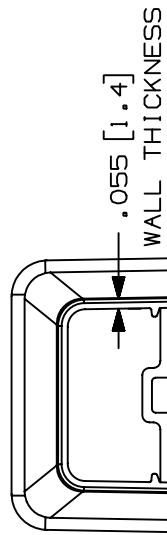
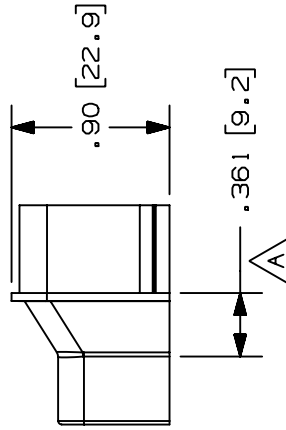
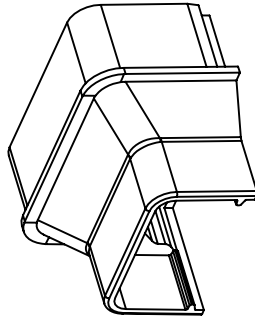


THIS COPY IS PROVIDED ON A RESTRICTED BASIS AND IS NOT TO BE USED IN ANY WAY DETRIMENTAL TO THE INTERESTS OF PANDUIT CORP.

PANDUIT P/N	WEIGHT
RFX105-X	.098 LB/10 PCS. (44.5 G/10 PCS.)



- NOTES:
- SEE CURRENT CATALOG FOR ADDITIONAL PART SUFFIXES TO INDICATE COLOR AND OR PACKAGE QUANTITY.
  - FOR USE IN POWER CABLING APPLICATIONS UP TO 600V OR FOR CATEGORY 5, FIBER OPTIC AND OTHER LOW VOLTAGE APPLICATIONS REQUIRING TAMPER-RESISTANCE.
  - DIMENSIONS IN PARENTHESIS ARE IN METRIC.



CAO FILENAME/LAYERS D35541CZ\_RFX105\_C\_01A.PRT

PANDUIT  
REDUCER FITTING (RFX105-X)  
CUSTOMER DRAWING

UNLESS OTHERWISE SPECIFIED,  
DIMENSIONAL TOLERANCES ARE:  
(.X) ± .XXX) ± .010(.3)  
(.XX) ± .3(.8) ANGLES ±

UNLESS OTHERWISE SPECIFIED,  
ALL DIMENSIONS ARE GIVEN  
IN INCHES, THIRD ANGLE PROJECTION.

DRAWN BY PM  
DATE 10-15-96  
CHK'D CEF

SCALE FULL

DRAWING NO.

35541-52

ABS/  
POLYCARBONATE



DWG  
SIZE  
A

ECN - R CUST SUP

DESCRIPTION

REV DATE BY CHK

2 08-11-97 RABO HIW

B. CORRECTED DRAWING NUMBER MISTAKE  
MADE ON REVISION 1

HIW

35541-52

HIW

1 07-31-97 RABO HIW

A. ADDED DIMENSION .361 (9.2)

HIW

35541-52

HIW

R 10-15-96 RABO CEF

RELEASED TO PRODUCTION

CEF

35541-52

CEF

REV DATE BY CHK

DESCRIPTION

ECN - R CUST SUP

DRAWN BY PM  
DATE 10-15-96  
CHK'D CEF

ABS/  
POLYCARBONATE



DRAWING NO.  
35541-52

DWG  
SIZE  
A