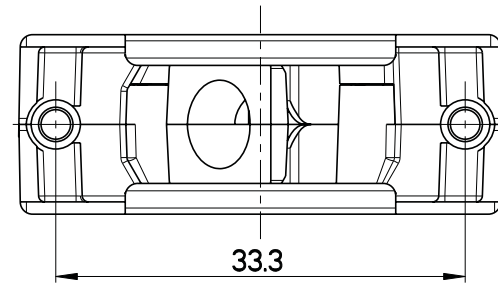
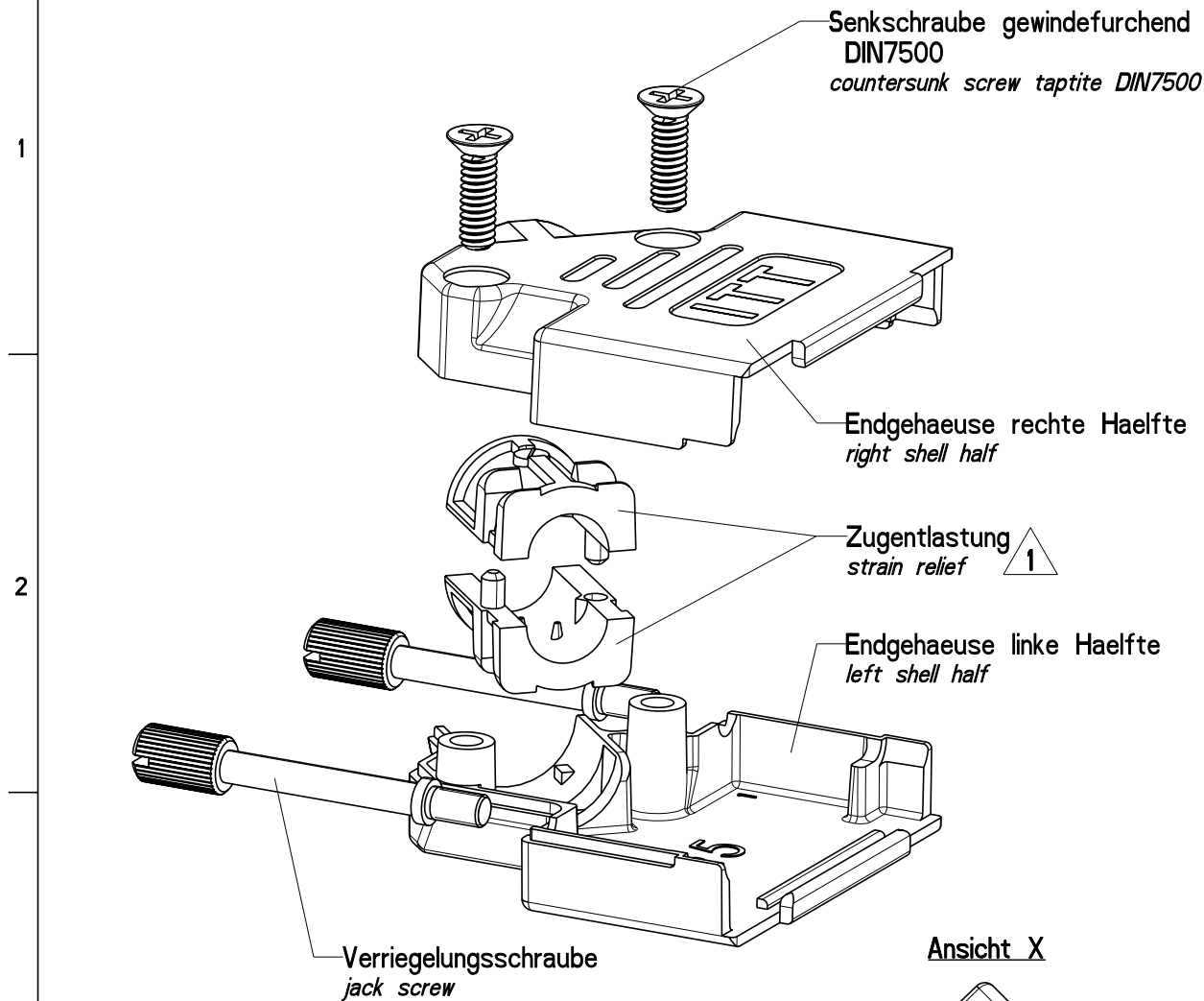
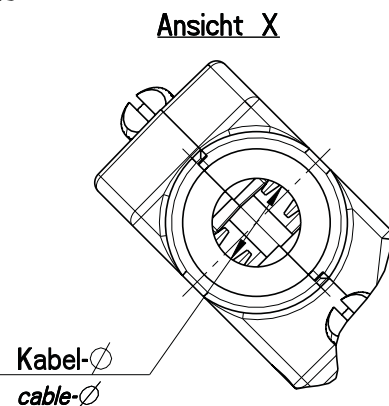
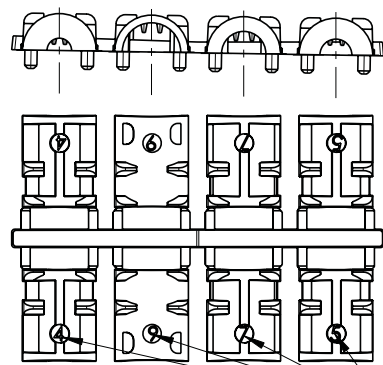
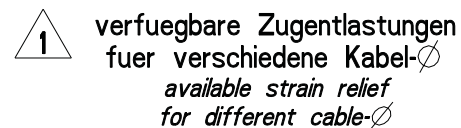
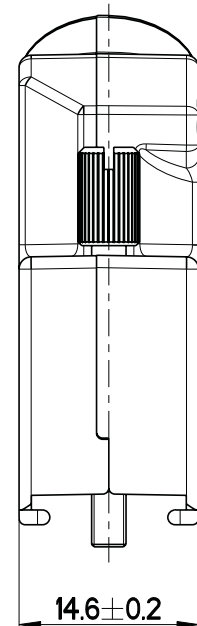
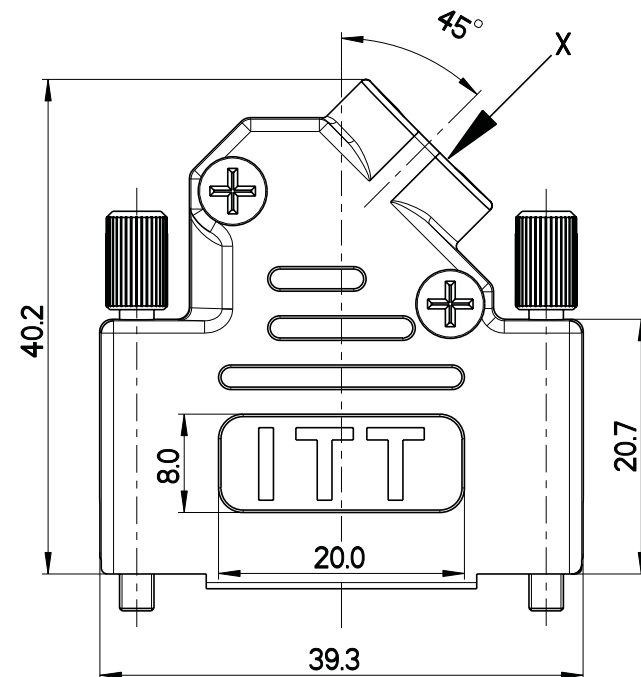



| ISSUE | REV.-NO. | DESCRIPTION | DATE | DRAWN |
|-------|----------|---|------------|---------|
| — | 3369W | Zeichnung in ProE neu erstellt / <i>drawing create with PRO/E</i> | 29.10.2008 | STR |
| A | 316281 | DESIGN TRANSFER TO USA BY LNT | 16.11.12 | J.MOORE |
| | | | | |
| | | | | |
| | | | | |

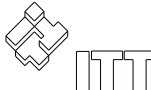
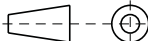


| Art.-Nr./ <i>order no.</i> | Beschreibung/ <i>description</i> |
|--------------------------------------|--|
| 121073-7000 | Endgehaeuse mit 4-40UNC Gewinde Verr.-schrauben/ <i>backshell with jackscrews</i> <i>thread 4-40UNC</i> |
| 121073-7001 | Endgehaeuse mit M3 Gewinde Verr.-schrauben/ <i>backshell with jackscrews</i> <i>thread M3</i> |



| | <div style="text-align: center;">  Zugentlastungen/ strain reliefs </div> | | | |
|--|---|-------|-------|-------|
| | Nr. 4 | Nr. 5 | Nr. 7 | Nr. 9 |
| max. Kabel-\varnothing / max. cable-\varnothing | 4mm | 5.2mm | 7.2mm | 9.5mm |

Gehaeusegroesse A (15polig, standard)
shell size A (15-pole, standard)

| | | | | | |
|--|--|--|-------------|--|---------------------------|
| MATERIAL: Zink-Legierung / zinc alloy | | HEAT TREAT: - | | SURFACE: vernickelt / nickel-plated | |
| FREE SIZE SEE TABLE DIMENSIONS IN MM | | > 0-3 ±0,05 | > 6-30 ±0,1 | ANGLE TOLERANCE ± 0,5° | |
| | | > 3-6 ±0,05 | > 30 ±0,2 | SURFACE FINISH \sqrt{Ra} -μ | |
| DRAWN STR | | DATE | 21.10.2008 | FILENAME | K026684Y0050 |
| CHECKED STR | | DATE | 21.10.2008 | REFERENCE | - |
| APPROVAL HAG | | DATE | 21.10.2008 | PARTNUMBER | siehe Tabelle / see table |
|  ITT Cannon GmbH D-71384 Weinstadt Germany | |  SCALE 2:1 | | TITLE ENDGEHAEUSE; D-SUB DAFM -100 | |
| | | | | | |
| © THIS DRAWING AND ASSOCIATED DOCUMENTS AND THE CONTAINED INFORMATION ARE THE PROPERTY OF ITT INDUSTRIES. NO PARTS MAY BE REPRODUCED OR USED WITHOUT WRITTEN CONSENT OF THE OWNER. | | FORMAT | SHEET | DRAWING-NO. | |
| | | A3 | 1 / 1 | K026684Y0050 | |
| | | | | ISSUE A | |

RoHS CODE : ROH

**WORLD WIDE USAGE
FOR DRAWING / DESIGN CHANGES
REQUIRES AFFILIATE APPROVAL**

TRANSFERRED FROM WEINSTADT, GERMANY
DESIGN ACTIVITY/CONTROL, ITT Cannon LLC, USA
666 EAST DYER ROAD, SANTA ANA, CA 92705
CAGE CODE 71468

EXPORT CODE C

This document contains technical data that is subject to export controls under the Export Administration Act and Export Administration Regulations (15 CFR 730, et seq.). Any transfer of this data to non-US persons or to any location outside the United States must be in compliance with the Export Administration Regulations.