

# CY SERIES

## SCREW TERMINAL BLOCKS

## SINGLE LEVEL FEED THROUGH TERMINAL BLOCKS

### HIGHLIGHTS

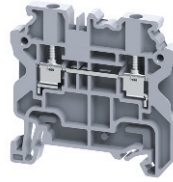
#### FEATURES

- Altech CY Series of Universal Screw Terminal Blocks featuring global standards
- Easy snap-on onto common DIN Rail
- Universal push-in Jumper System

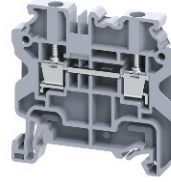
#### APPLICATIONS

- Machines
- Control/ Automation Applications
- Power Distribution

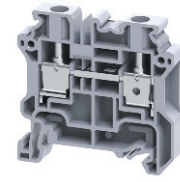
### CY2.5



### CY4



### CY6



#### Dimensions & Weight

	CY2.5	CY4	CY6
	2 Connection Feed-Through 2 Jumper Channels		
Width	5 mm	6 mm	8 mm
Length	50 mm	50 mm	50 mm
Height w DIN Rail	35 x 7.5 mm 35 x 15 mm	49 mm 56.5 mm	49 mm 56.5 mm
Weight per piece	8.3 g	10.4 g	16.1 g

#### Technical Data/Ratings

Approvals						
Wire Size (solid / stranded)	24-12 AWG / 0.2-2.5 mm <sup>2</sup>		24-10 AWG / 0.2-4 mm <sup>2</sup>		24-8 AWG / 0.2-6 mm <sup>2</sup>	
Voltage Rating	600 V / 1000V AC/DC		600 V / 1000V AC/DC		600 V / 1000V AC/DC	
Current Rating	20 A / 24 A		30 A / 32 A		50 A / 41 A	
Torque	3.6 lb-in / 0.4 Nm		4.5 lb-in / 0.8 Nm		11 lb-in / 1.2 Nm	
Insulation Material	Polyamide 66					

#### Installation Instructions

Wire Stripping Length	8 mm	9 mm	10 mm
Screwdriver	Flat Head 0.5 x 3 mm	Flat Head 0.6 x 3.5 mm	Flat Head 0.8 x 4 mm

#### Terminal Blocks

	Cat. No.	Std. Pk.	Cat. No.	Std. Pk.	Cat. No.	Std. Pk.
<b>Grey (standard)</b>	<b>CY2.5</b>	100	<b>CY4</b>	100	<b>CY6</b>	100
Red R	CY2.5/R	100	CY4/R	100	CY6/R	100
Blue BU	CY2.5/BU	100	CY4/BU	100	CY6/BU	100
Black BL	CY2.5/BL	100	CY4/BL	100	CY6/BL	100
Orange O	CY2.5/O	100	CY4/O	100	CY6/O	100
Green G	CY2.5/G	100	CY4/G	100	CY6/G	100
Yellow Y	CY2.5/Y	100	CY4/Y	100	CY6/Y	100
White W	CY2.5/W	100	CY4/W	100	CY6/W	100

#### Accessories

	Cat. No.	Std. Pk.	Cat. No.	Std. Pk.	Cat. No.	Std. Pk.	
End Plate	EPCY2.5/10	50	EPCY2.5/10	50	EPCY2.5/10	50	
Partition Plate	PPCY2.5/10	20	PPCY2.5/10	20	PPCY2.5/10	20	
DIN Rail	2511120 CA701-15/S	20 20	2511120 CA701-15/S	20 20	2511120 CA701-15/S	20 20	
End Stop	CA702 CA802 CA103	50 50 50	CA702 CA802 CA103	50 50 50	CA702 CA802 CA103	50 50 50	
Shorting Link/ Jumpers	2 pole 3 pole 4 pole 5 pole 6 pole 7 pole 8 pole 10 pole 16 pole	JX2.5/2 JX2.5/3 JX2.5/4 JX2.5/5 JX2.5/6 JX2.5/7 JX2.5/8 JX2.5/10 -	100 50 50 50 10 10 10 10 -	JX4/2 JX4/3 JX4/4 - - - - JX4/8 JX4/10 JX4/16	100 50 50 - - - - 50 10 10	JY6/2 - - - - - - - - -	100 - - - - - - - - -
Marking Tag	MT5	1 Pk. (100 tags)	MT6	1 Pk. (100 tags)	MT8	1 Pk. (100 tags)	
Warning Label	WLX2.5	1 Pk. (100 tags)	WLX4	1 Pk. (100 tags)	WLX6	1 Pk. (100 tags)	