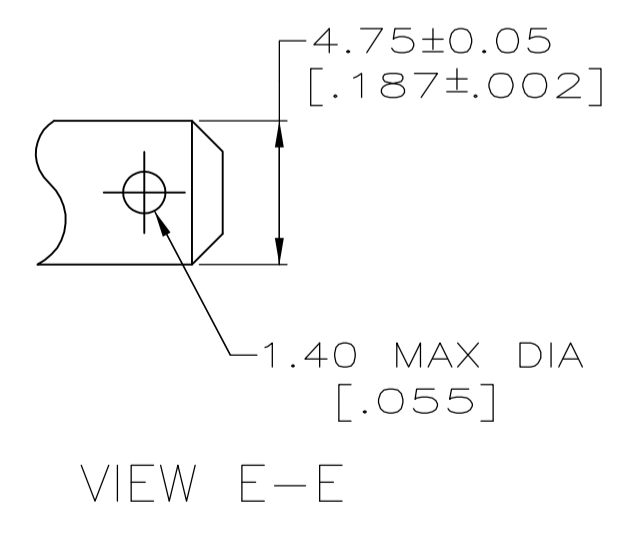
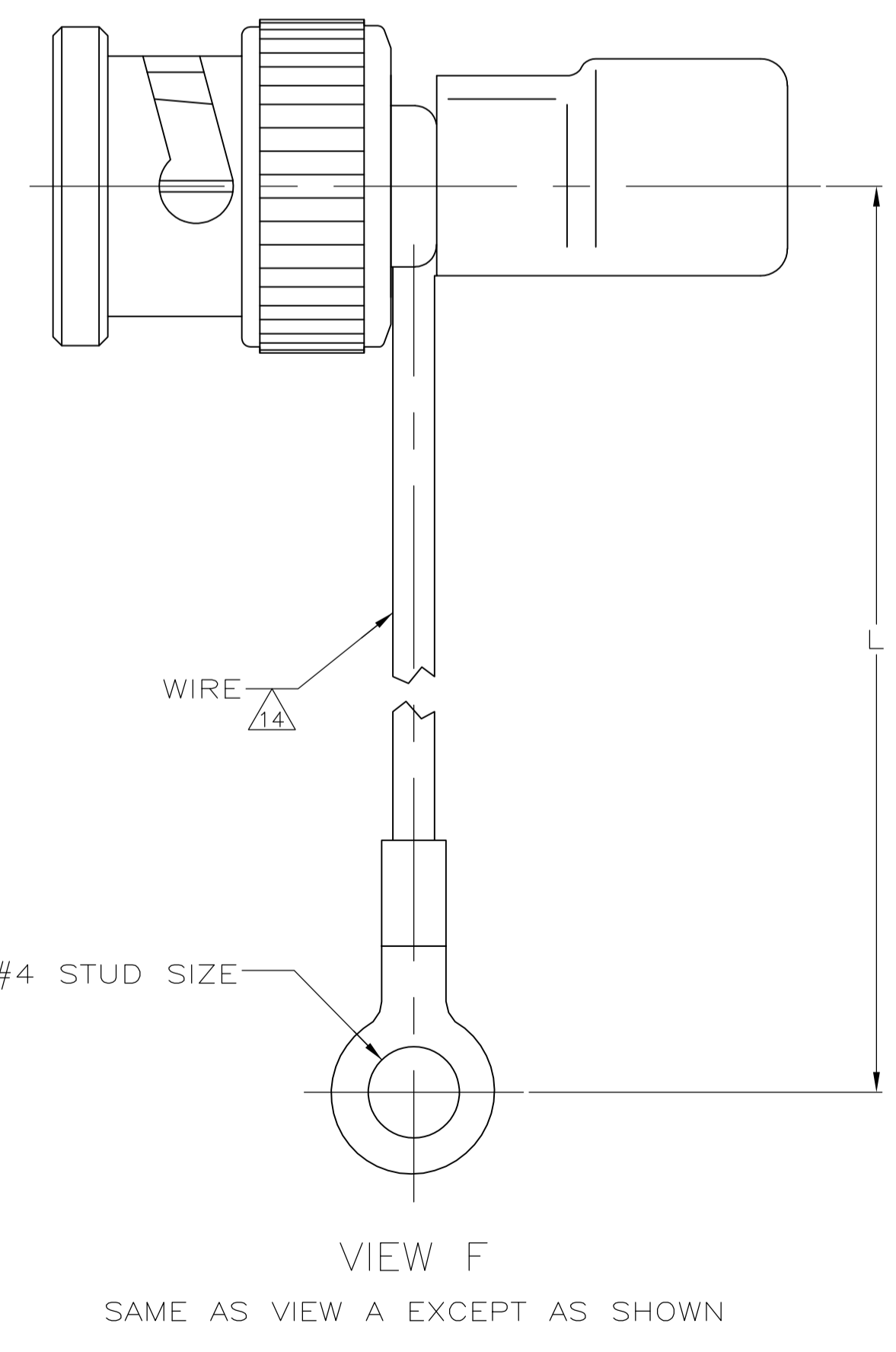
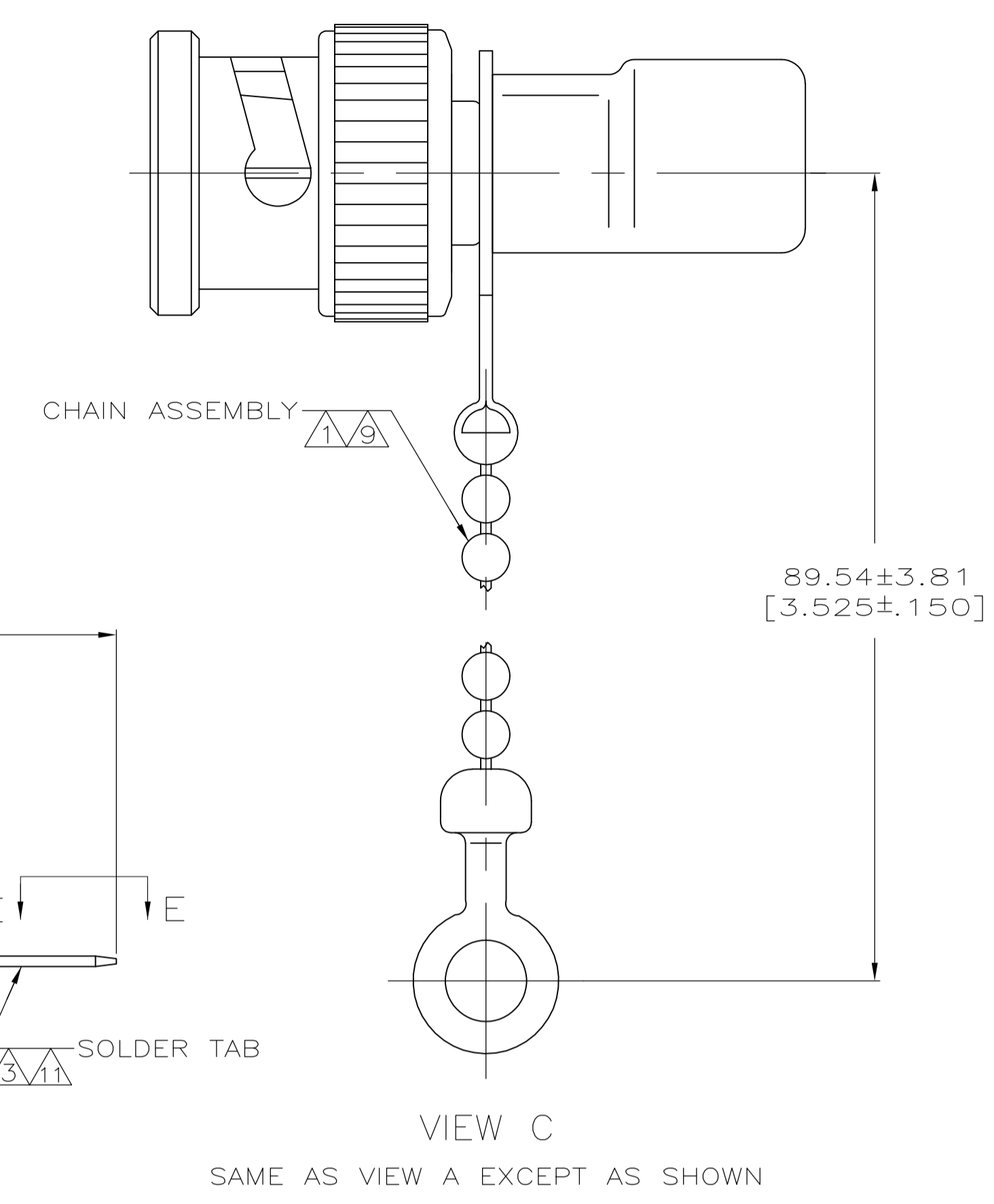
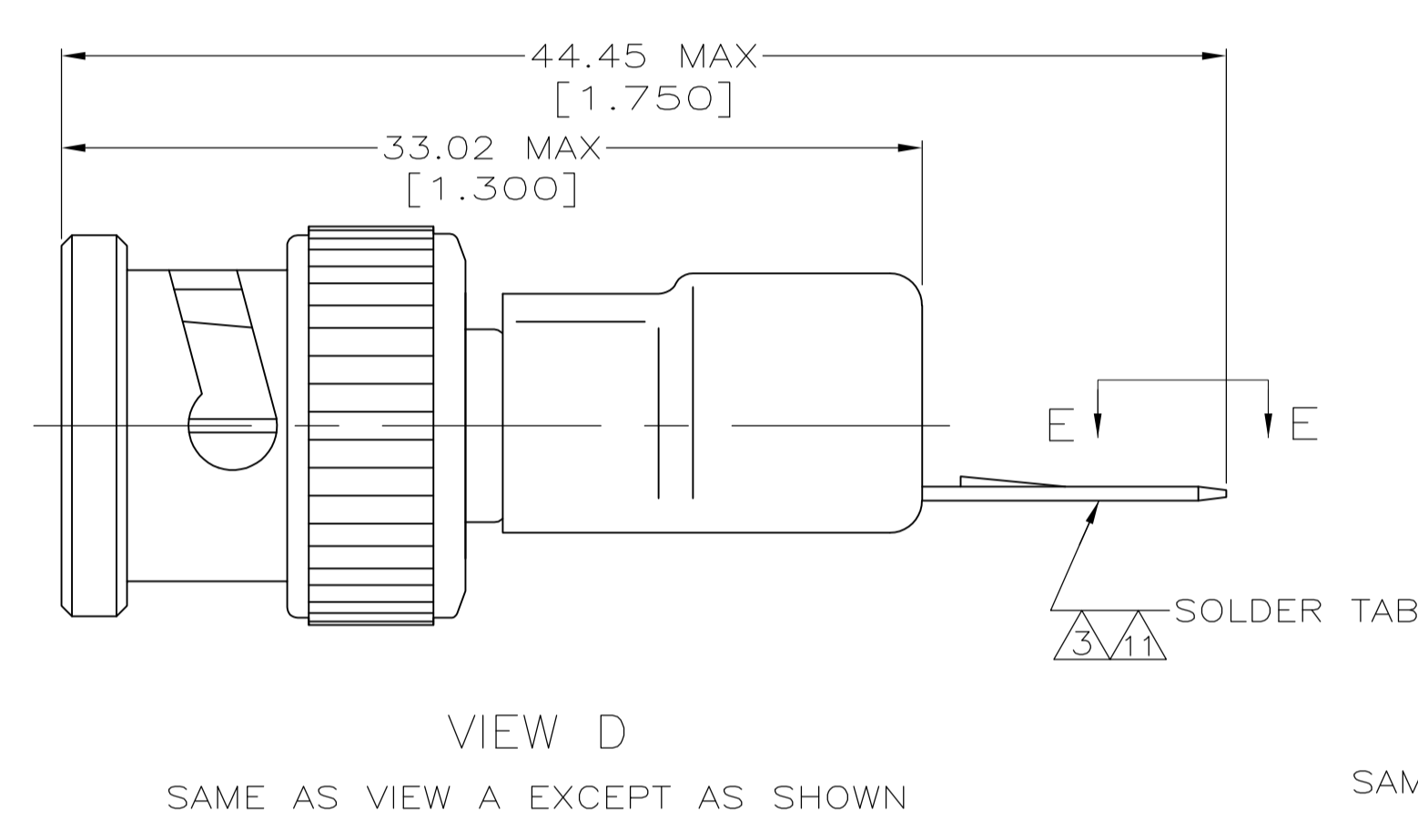
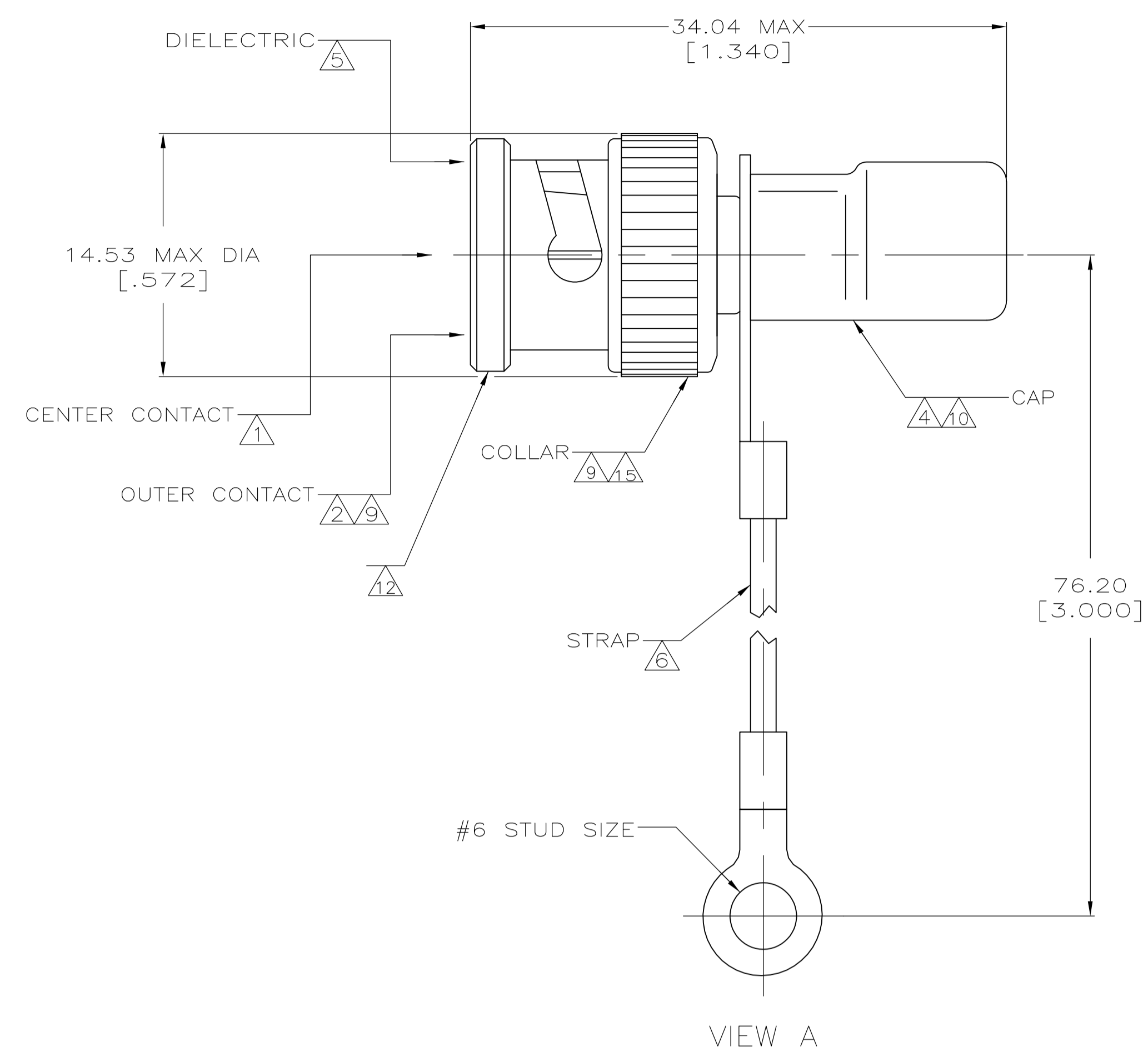


| REVISONS | | DATE | BY | APP'D |
|----------|---------------------------|---------|----|-------|
| AE2 | REVISED PER ECO-11-005030 | 11MAR11 | RK | HMR |



- 1 BRASS PER QQ-B-626.
- 2 BRASS PER MIL-C-21768.
- 3 BRASS PER MIL-C-50.
- 4 COPPER PER QQ-C-576.
- 5 POLYETHYLENE PER LP-390.
- 6 POLYESTER PER MIL-T-43435, COLOR NATURAL.
- 7 GOLD PLATE PER MIL-G-45204, 0.76 μm [.000030] MINIMUM THICK.
- 8 SILVER PLATE PER QQ-S-365, 2.54 μm [.000100] MINIMUM THICK.
- 9 NICKEL PLATE PER QQ-N-290, 1.27 μm [.000050] MINIMUM THICK.
- 10 TIN PLATE PER ASTM B 545, 2.54 μm [.000100] MIN THICK.
- 11 TIN PLATE PER ASTM B 545, 3.81 μm [.000150] MINIMUM THICK.
- 12 VALUE MARKED ON CONNECTOR BODY AS SHOWN. (SEE TABLE)
- 13 SEE SEPARATE RESTRICTED CUSTOMER DRAWING WITH THIS PART NUMBER.
- 14 16 GAUGE INSULATED GROUND WIRE.
- 15 ZINC PER QQ-Z-363

| RESISTOR SPECIFICATIONS | WATT | TOLERANCE | OHM | MARKING | L | CENTER CONTACT PLATING | VIEW | PART NUMBER |
|-------------------------|------|-----------|-----|----------|-----------------------------|------------------------|------|-------------|
| OBSOLETE | 1 | 1% | 50 | 50Ω 1W | - | △ | B | 9-221629-1 |
| OBSOLETE | 1 | 1% | 50 | 50Ω 1W | - | △ | A | 9-221629-0 |
| OBSOLETE | - | 1% | 50 | 50Ω 1W | 2999.99±25.40 [118.11±1.00] | △ | F | 2-221629-2 |
| OBSOLETE | - | - | - | - | - | - | - | 2-221629-1 |
| OBSOLETE | - | - | - | - | - | - | - | 2-221629-0 |
| OBSOLETE | - | - | - | - | - | - | - | 1-221629-9 |
| OBSOLETE | 1 | 1% | 50 | 50Ω 1W | - | △ | B | 1-221629-8 |
| OBSOLETE | 1 | 1% | 50 | 50Ω 1W | 85.85±2.03 [3.380±.080] | △ | F | 1-221629-6 |
| OBSOLETE | 1 | 1% | 50 | - | - | △ | D | 1-221629-2 |
| OBSOLETE | .5 | 1% | 75 | 75Ω .5W | - | △ | C | 1-221629-1 |
| OBSOLETE | 1 | 1% | 50 | 50Ω 1W | - | △ | B | 221629-9 |
| OBSOLETE | 1 | 1% | 50 | 50Ω 1W | - | △ | B | 221629-8 |
| OBSOLETE | .5 | 5% | 100 | 100Ω .5W | - | △ | B | 221629-7 |
| OBSOLETE | 1 | 1% | 93 | 93Ω 1W | - | △ | B | 221629-6 |
| OBSOLETE | 1 | 1% | 75 | 75Ω 1W | - | △ | B | 221629-5 |
| OBSOLETE | 1 | 1% | 50 | 50Ω 1W | - | △ | B | 221629-4 |
| OBSOLETE | 1 | 1% | 93 | 93Ω 1W | - | △ | A | 221629-3 |
| OBSOLETE | 1 | 1% | 75 | 75Ω 1W | - | △ | A | 221629-2 |
| OBSOLETE | 1 | 1% | 50 | 50Ω 1W | - | △ | A | 221629-1 |

THIS DRAWING IS A CONTROLLED DOCUMENT.

| | | | |
|-------------------------|--|-------------|-------------|
| DIMENSIONS: mm [INCHES] | TOLERANCES UNLESS OTHERWISE SPECIFIED: | DIN 9-22-90 | J. LIPPERT |
| 0 PLC ± - | 1 PLC ± - | 9-28-90 | R. E. RUTH |
| 2 PLC ± ± 3.18 [125] | 3 PLC ± ± - | 10-1-90 | M. PHILLIPS |
| 4 PLC ± ± - | ANGLES ± ± - | | |

MATERIAL: - FINISH: -

WEIGHT: -

CUSTOMER DRAWING

SCALE: 4:1 SHEET 1 OF 1 REV AE2

STE TE Connectivity

TERMINATOR, PLUG, COMMERCIAL BNC

SIZE: A1 CAGE CODE: 00779 DRAWING NO: 221629