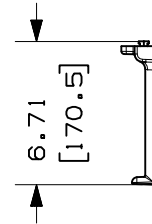
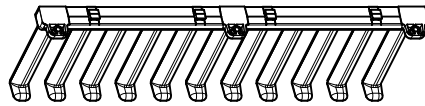
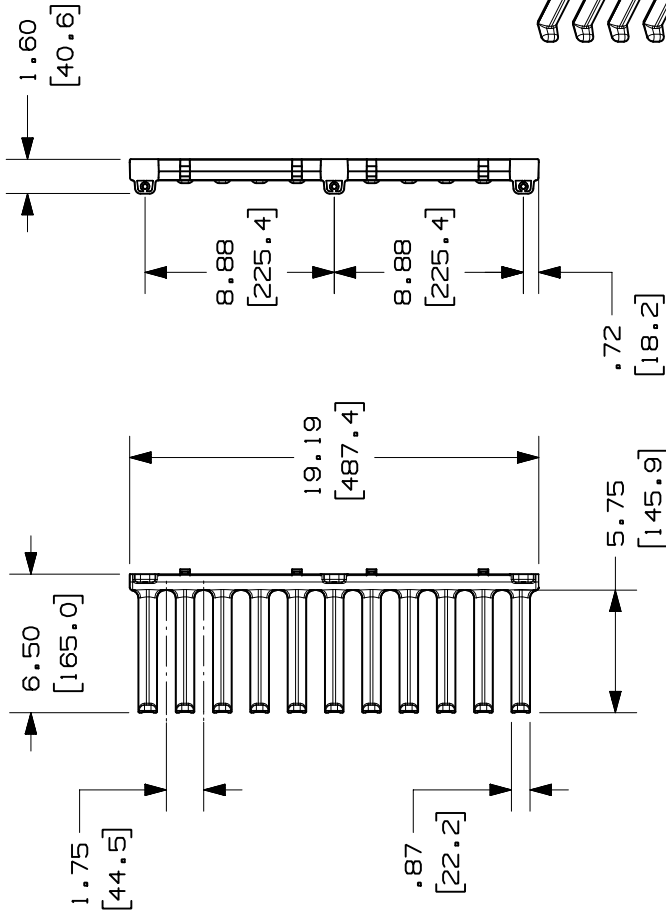


THIS COPY IS PROVIDED ON A RESTRICTED BASIS AND IS NOT TO BE USED IN ANY WAY DETRIMENTAL TO THE INTERESTS OF PANDUIT CORP.

PANDUIT PART NO.	WEIGHT
NFBRF	0.9 LBS/EACH 0.41 Kg/EACH

- NOTES:
- VISIT OUR ON-LINE CATALOG AT WWW.PANDUIT.COM FOR A CURRENT LIST OF PRODUCTS APPLICABLE FOR USE WITH THIS PART.
 - FINGERS CAN BE BROKEN OFF WITHOUT THE USE OF A TOOL.
 - DIMENSIONS IN PARENTHESIS ARE METRIC (mm).
 - ALL DIMENSION ARE REFERENCE ONLY.
 - COMPONENTS:
 - NETFRAME BEND RADIUS FINGER SECTION
 - #12-24 X 5/8" SCREWS



MODEL FILENAME	V10118BB_SINGLE_SEC_FINGERS_00.PRT
CAD FILENAME/LAYERS	V10118BB_DC_00A.PRT
PANDUIT CORP. TINLEY PARK, ILLINOIS	
NETFRAME BEND RADIUS FINGERS (NFBRF) CUSTOMER DRAWING	
UNLESS OTHERWISE SPECIFIED, DIMENSIONAL TOLERANCES ARE: INCHES X.XX X.XXX X.XXX X.XXX	UNLESS OTHERWISE SPECIFIED, ALL DIMENSIONS ARE GIVEN IN INCHES, THIRD ANGLE PROJECTION.
INCHES +/- 0.03 X.XX +/- 0.015 X.XXX +/- 0.005 X.XXX	(METRIC - MILLIMETER) ANGLE +/- 0.8 X.X +/- 0.4 X.X +/- 0.13 X.XX
DRAWN BY TKW	MAT'L S
DATE 10-20-04	SCALE 1/8
CHK'D	DRAWING NO. 10118-03
SEE NOTES	DWG A

REV	DATE	BY	CHK	DESCRIPTION	ECN	R	CUST	SUP	OTH
R	10-20-04	TKW		RELEASED TO PRODUCTION	10118-03				