

LETTERS IN CIRCLE INDICATE CHANGE FROM PRECEDING PRINT  
 (K) REVISED & REDRAWN  
 PAGE 1 OF 2

56 J

CONFORMING TO THE INFORMATION CONTAINED IN THIS DOCUMENT IS THE PROPERTY OF COOPER INDUSTRIES, INC. IT IS NOT TO BE REPRODUCED OR TRANSMITTED IN ANY FORM OR BY ANY MEANS, ELECTRONIC OR MECHANICAL, INCLUDING PHOTOCOPYING, RECORDING, OR BY ANY INFORMATION STORAGE AND RETRIEVAL SYSTEM, WITHOUT PERMISSION IN WRITING FROM COOPER INDUSTRIES, INC. THIS DOCUMENT IS UNCLASSIFIED FOR RELEASE TO THE PUBLIC ON THE AUTHORITY OF THE INFORMATION MANAGEMENT AND CONTROL ACT OF 1969 (50 USC 1701-1705). UNLESS OTHERWISE SPECIFIED, DIMENSIONS ARE IN INCHES (OR U.S. UNITS) IS THE PRIMARY UNIT OF MEASURE.

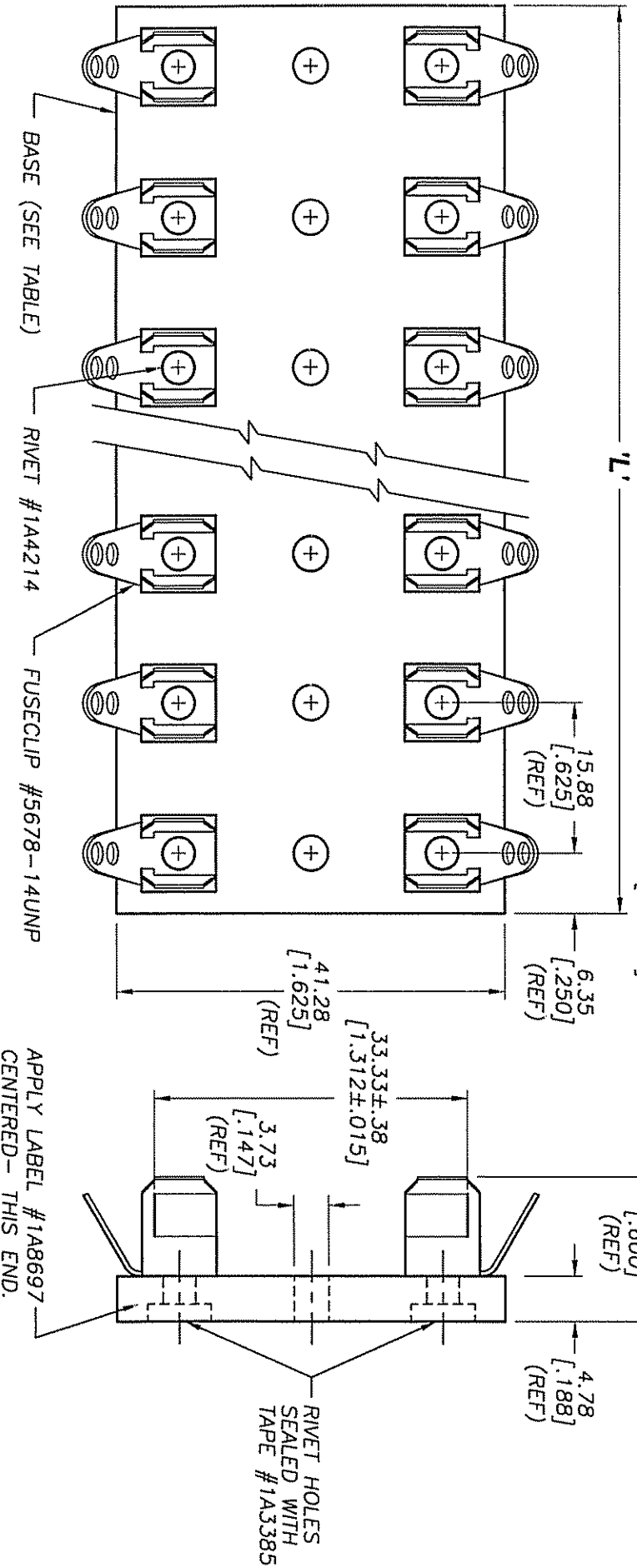
SCALE: 1 1/2x  
 METRIC TOLERANCES TO BE: ±.13mm ±.005"  
 ANGULAR ±2°

INDICATES CRITICAL DIMENSION OR FEATURE (0)

THIRD ANGLE PROJECTION

UNLESS OTHERWISE SPECIFIED TOLERANCES TO BE:  
 METRIC ±.13mm  
 INCHES ±.005"  
 ANGULAR ±2°

56476



PACKAGING SPECIFICATION #1P1063

PART NO.	NO. OF POLES	BASE P/N	'L' LENGTH (REF)
3823-1	1	6623-1	12.70 [.500]
3823-2	2	6623-2	28.58 [1.125]
3823-3	3	6623-3	44.45 [1.750]
3823-4	4	6623-4	60.33 [2.375]
3823-5	5	6623-5	76.20 [3.000]
3823-6	6	6623-6	92.08 [3.625]

PART NO.	NO. OF POLES	BASE P/N	'L' LENGTH (REF)
3823-7	7	6623-7	107.95 [4.250]
3823-8	8	6623-8	123.83 [4.875]
3823-9	9	6623-9	139.70 [5.500]
3823-10	10	6623-10	155.58 [6.125]
3823-12	12	6623-12	187.33 [7.375]