

LETTERS IN CIRCLE INDICATE CHANGE FROM PRECEDING PRINT
 (K) REVISED & REDRAWN
 PAGE 1 OF 2

56 J

CONFORMING TO THE INFORMATION CONTAINED IN THIS DOCUMENT IS THE PROPERTY OF COOPER INDUSTRIES, INC. IT IS NOT TO BE REPRODUCED OR TRANSMITTED IN ANY FORM OR BY ANY MEANS, ELECTRONIC OR MECHANICAL, INCLUDING PHOTOCOPYING, RECORDING, OR BY ANY INFORMATION STORAGE AND RETRIEVAL SYSTEM, WITHOUT PERMISSION IN WRITING FROM COOPER INDUSTRIES, INC. UNAUTHORIZED REPRODUCTION OR USE OF THE INFORMATION CONTAINED HEREIN FOR ANY PURPOSE OTHER THAN THAT AUTHORIZED BY COOPER INDUSTRIES, INC. IS PROHIBITED. PERMISSION TO REPRODUCE OR TRANSMIT THIS DOCUMENT OR THE INFORMATION CONTAINED HEREIN IN ANY FORM OR BY ANY MEANS, ELECTRONIC OR MECHANICAL, INCLUDING PHOTOCOPYING, RECORDING, OR BY ANY INFORMATION STORAGE AND RETRIEVAL SYSTEM, WITHOUT PERMISSION IN WRITING FROM COOPER INDUSTRIES, INC. IS FORWARDED UPON REQUEST.

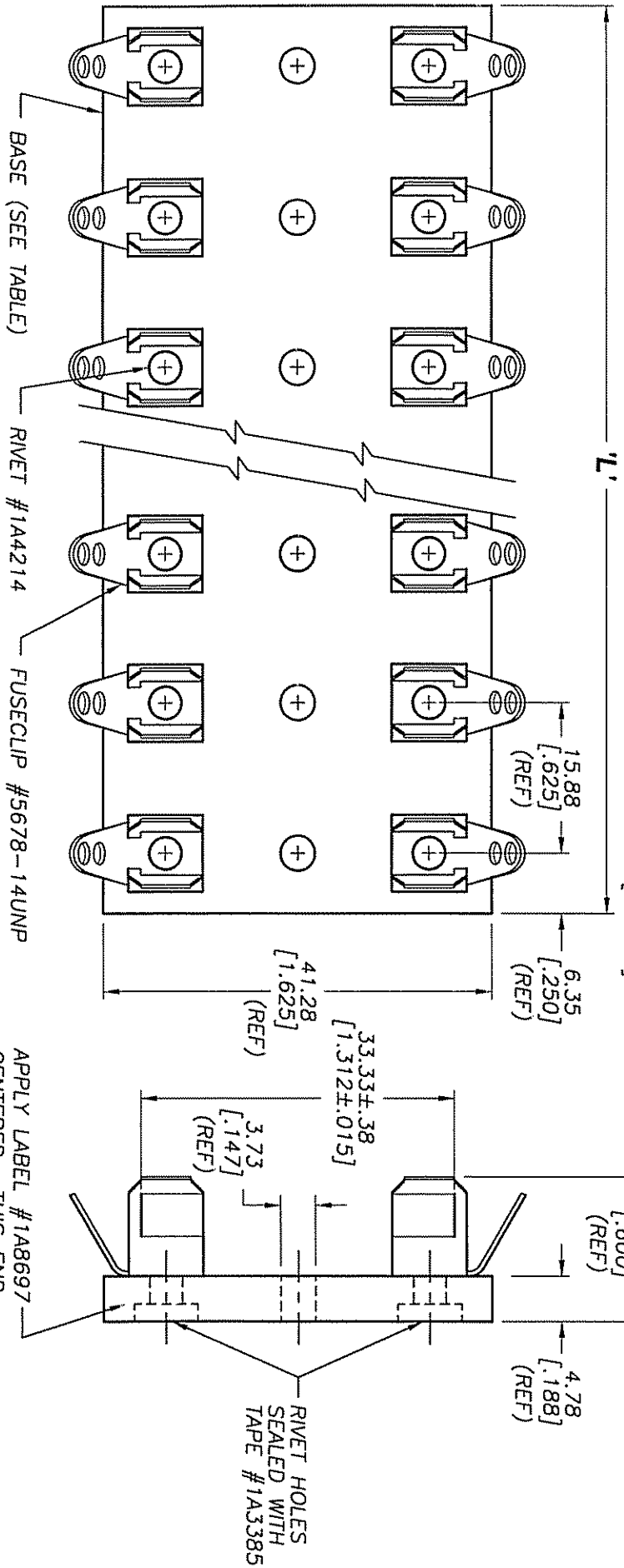
COOPER Bussmann
 St. Louis, MO 63178
 SUPP. NO.: 3823 J
 DATED: 5-22-99
 J04084

INDICATES CRITICAL DIMENSION OR FEATURE

UNLESS OTHERWISE SPECIFIED TOLERANCES TO BE:
 METRIC ±.13mm
 INCHES ±.005"
 ANGULAR ±2°

THIRD ANGLE PROJECTION

56476



PACKAGING SPECIFICATION #1P1063

PART NO.	NO. OF POLES	BASE P/N	'L' LENGTH (REF)
3823-1	1	6623-1	12.70 [.500]
3823-2	2	6623-2	28.58 [1.125]
3823-3	3	6623-3	44.45 [1.750]
3823-4	4	6623-4	60.33 [2.375]
3823-5	5	6623-5	76.20 [3.000]
3823-6	6	6623-6	92.08 [3.625]

PART NO.	NO. OF POLES	BASE P/N	'L' LENGTH (REF)
3823-7	7	6623-7	107.95 [4.250]
3823-8	8	6623-8	123.83 [4.875]
3823-9	9	6623-9	139.70 [5.500]
3823-10	10	6623-10	155.58 [6.125]
3823-12	12	6623-12	187.33 [7.375]

APPLY LABEL #1A8697
 CENTERED - THIS END.

RIVET HOLES
 SEALED WITH
 TAPE #1A3385