

LETTERS IN CIRCLE INDICATE CHANGE FROM PRECEDING PRINT
 (K) REVISED & REDRAWN
 PAGE 1 OF 2

56 J

CONFORMING TO THE INFORMATION CONTAINED IN THIS DOCUMENT IS THE PROPERTY OF COOPER INDUSTRIES, INC. IT IS NOT TO BE REPRODUCED OR TRANSMITTED IN ANY FORM OR BY ANY MEANS, ELECTRONIC OR MECHANICAL, INCLUDING PHOTOCOPYING, RECORDING, OR BY ANY INFORMATION STORAGE AND RETRIEVAL SYSTEM, WITHOUT PERMISSION IN WRITING FROM COOPER INDUSTRIES, INC. UNAUTHORIZED REPRODUCTION OR USE OF THE INFORMATION CONTAINED HEREIN FOR ANY PURPOSE OTHER THAN THAT AUTHORIZED BY COOPER INDUSTRIES, INC. IS PROHIBITED. PERMISSION TO REPRODUCE THIS DOCUMENT FOR LIMITED PURPOSES MAY BE OBTAINED BY CONTACTING COOPER INDUSTRIES, INC. AT (314) 241-1000. PERMISSION IS GRANTED TO MAKE LIMITED COPIES OF THIS DOCUMENT FOR PERSONAL OR INTERNAL USE ONLY. PERMISSION IS NOT GRANTED TO REPRODUCE THIS DOCUMENT FOR GENERAL DISTRIBUTION OR FOR PROMOTIONAL PURPOSES. PERMISSION IS NOT GRANTED TO REPRODUCE THIS DOCUMENT FOR ANY PURPOSE OTHER THAN THAT AUTHORIZED BY COOPER INDUSTRIES, INC. UNLESS OTHERWISE SPECIFIED.

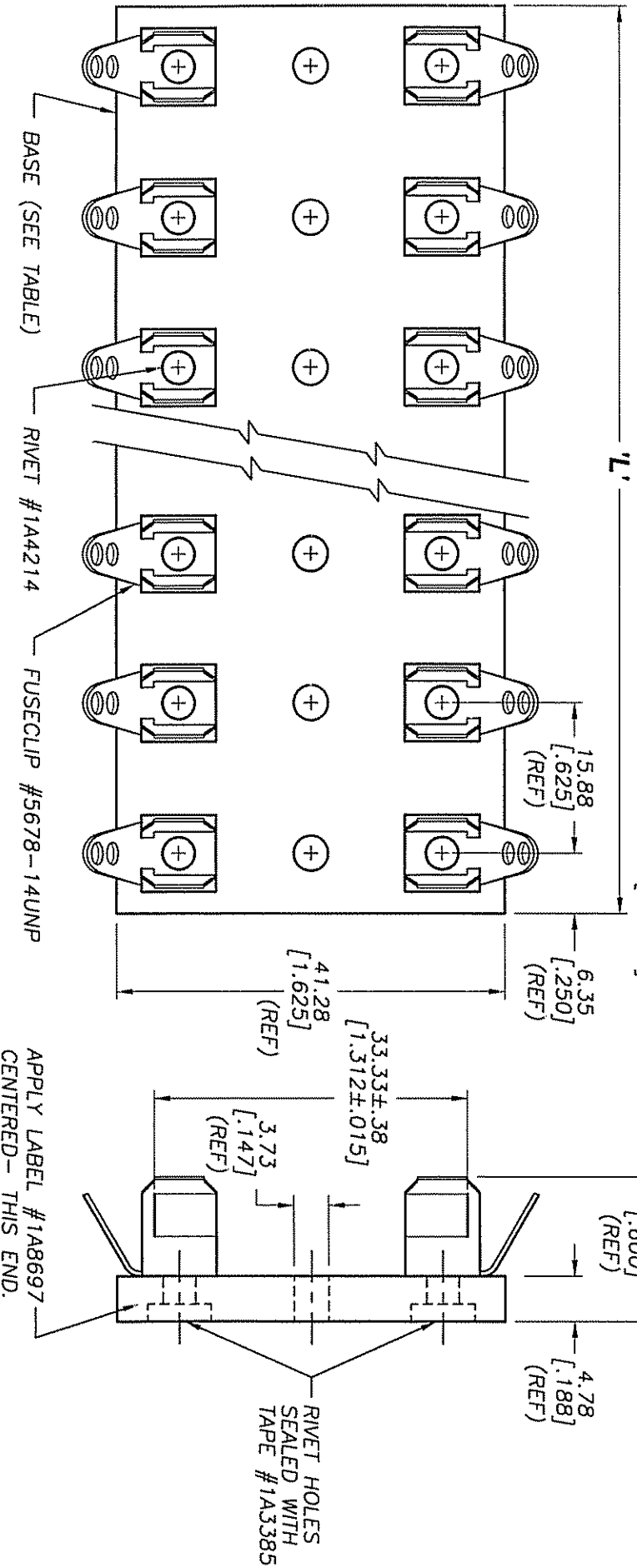
INDICATES CRITICAL DIMENSION OR FEATURE

SCALE: 1 1/2x

TOLERANCES TO BE:
 METRIC ±.13mm
 INCHES ±.005"
 ANGULAR ±2°

THIRD ANGLE PROJECTION

56476



PACKAGING SPECIFICATION #1P1063

PART NO.	NO. OF POLES	BASE P/N	'L' LENGTH (REF)
3823-1	1	6623-1	12.70 [.500]
3823-2	2	6623-2	28.58 [1.125]
3823-3	3	6623-3	44.45 [1.750]
3823-4	4	6623-4	60.33 [2.375]
3823-5	5	6623-5	76.20 [3.000]
3823-6	6	6623-6	92.08 [3.625]

PART NO.	NO. OF POLES	BASE P/N	'L' LENGTH (REF)
3823-7	7	6623-7	107.95 [4.250]
3823-8	8	6623-8	123.83 [4.875]
3823-9	9	6623-9	139.70 [5.500]
3823-10	10	6623-10	155.58 [6.125]
3823-12	12	6623-12	187.33 [7.375]