

LETTERS IN CIRCLE INDICATE CHANGE FROM PRECEDING PRINT
 (K) REVISED & REDRAWN
 PAGE 1 OF 2

56 J

CONFORMING TO THE INFORMATION CONTAINED IN THIS DOCUMENT IS THE PROPERTY OF COOPER INDUSTRIES, INC. IT IS NOT FOR REPRODUCTION OR TRANSMISSION IN ANY FORM OR BY ANY MEANS, ELECTRONIC OR MECHANICAL, INCLUDING PHOTOCOPYING, RECORDING, OR BY ANY INFORMATION STORAGE AND RETRIEVAL SYSTEM, WITHOUT PERMISSION IN WRITING FROM COOPER INDUSTRIES, INC. UPON COMPLETION OF THE PURPOSE FOR WHICH IT IS ORDERED OR UPON REQUEST.

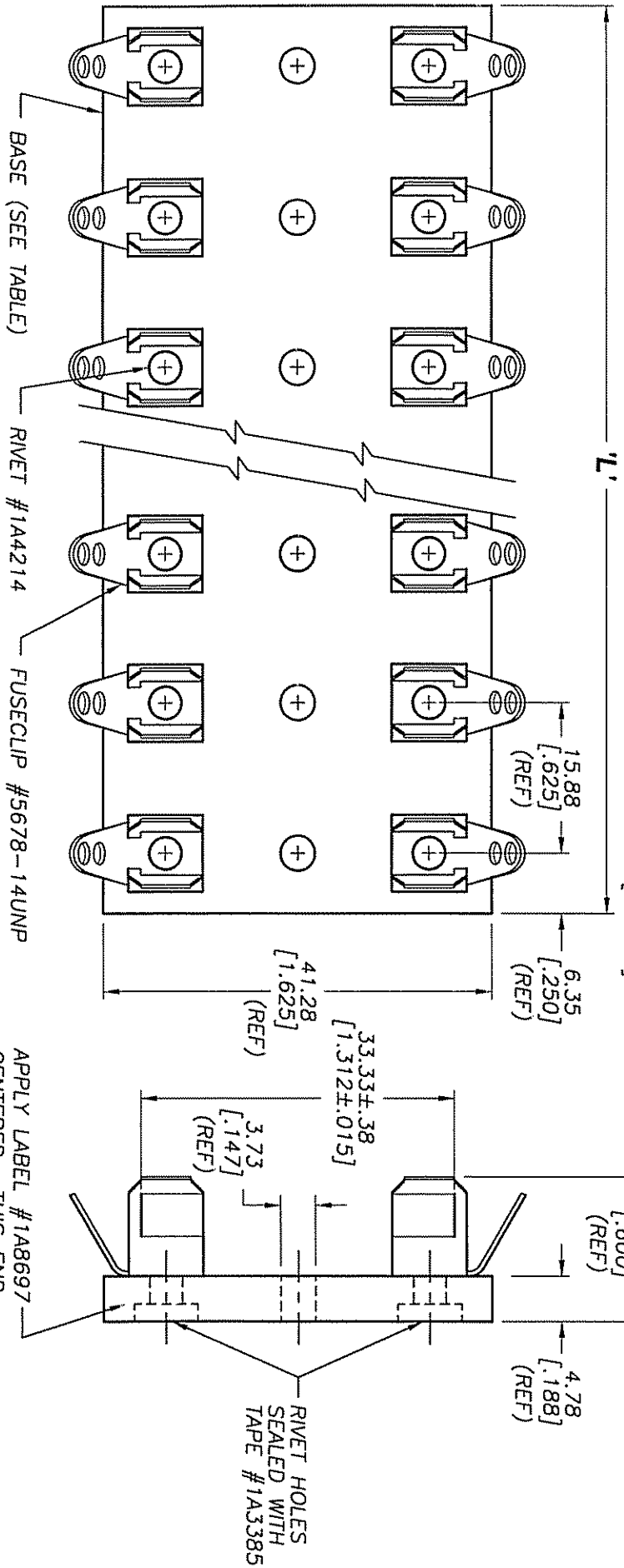
COOPER Bussmann, a division of Cooper Industries, Inc., is not responsible for the use of the information contained herein for any purpose other than that for which it was intended. It is the responsibility of the user to determine the applicability of the information contained herein to their specific application. The user is advised to select appropriate safety precautions when using the information contained herein. The user is advised to consult the applicable safety standards and regulations when using the information contained herein.

INDICATES CRITICAL DIMENSION OR FEATURE

THIRD ANGLE PROJECTION

SCALE: UNLESS OTHERWISE SPECIFIED, TOLERANCES TO BE: METRIC ±.13mm INCHES ±.005" ANGULAR ±2°

5/8" UNF 56476



PACKAGING SPECIFICATION #1P1063

PART NO.	NO. OF POLES	BASE P/N	'L' LENGTH (REF)
3823-1	1	6623-1	12.70 [.500]
3823-2	2	6623-2	28.58 [1.125]
3823-3	3	6623-3	44.45 [1.750]
3823-4	4	6623-4	60.33 [2.375]
3823-5	5	6623-5	76.20 [3.000]
3823-6	6	6623-6	92.08 [3.625]

PART NO.	NO. OF POLES	BASE P/N	'L' LENGTH (REF)
3823-7	7	6623-7	107.95 [4.250]
3823-8	8	6623-8	123.83 [4.875]
3823-9	9	6623-9	139.70 [5.500]
3823-10	10	6623-10	155.58 [6.125]
3823-12	12	6623-12	187.33 [7.375]