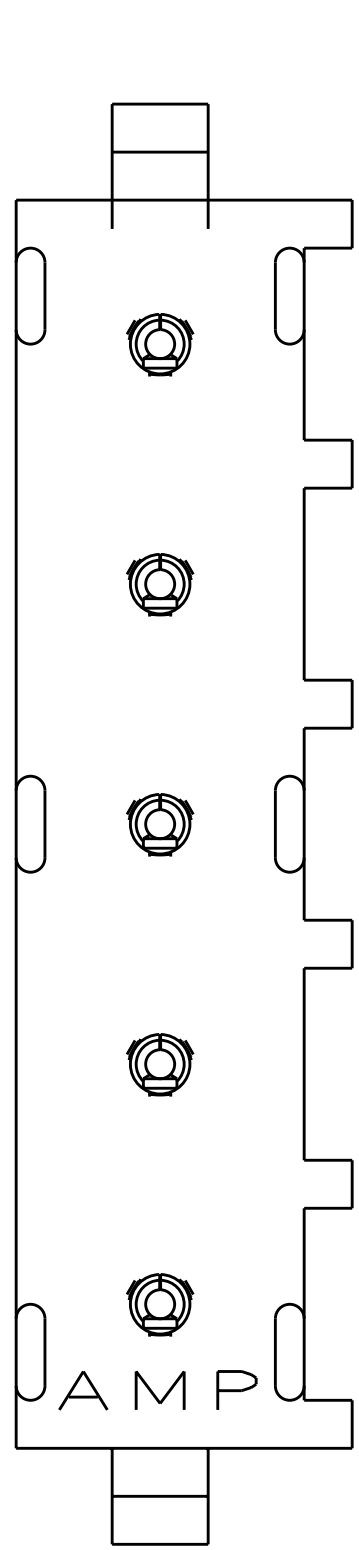


LOC		DIST		REVISIONS			
P	LYR	DESCRIPTION		DATE	DWN	APVD	
	A	RELEASED		23NOV11	JR	TM	



CONTACT  
5 REQ'D

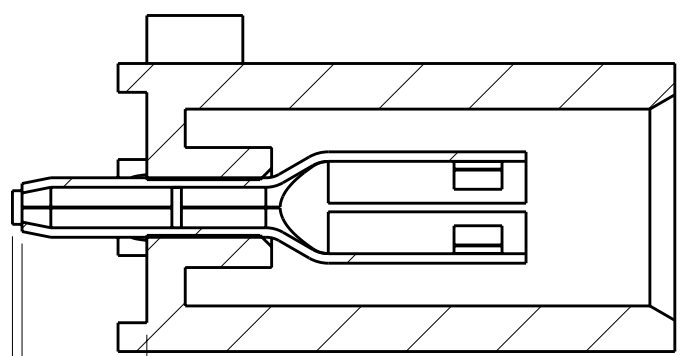
B

B

0.76  
[.030]

TYP

13.97  
[.550]



0.25  
[.010]

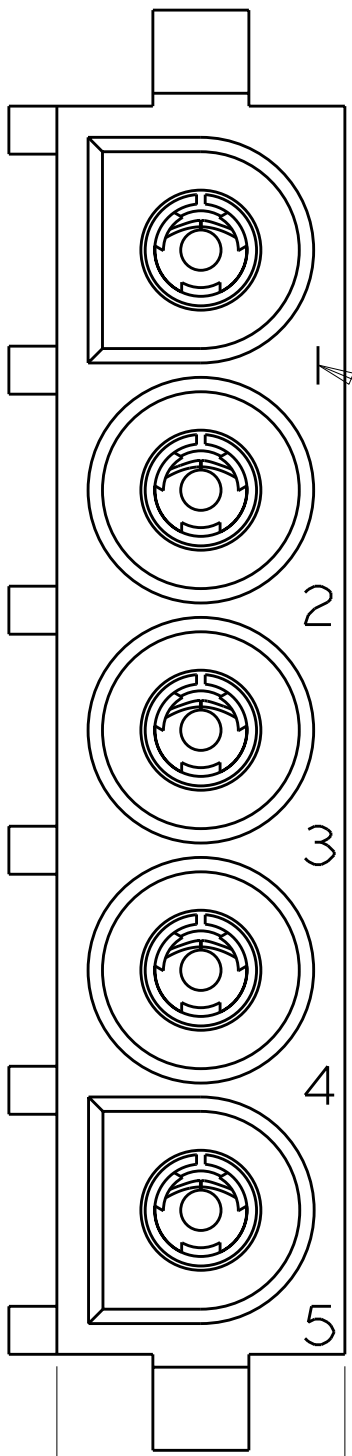
MAX

CUT-OFF TAB

3.30±0.25  
[.130±.010]

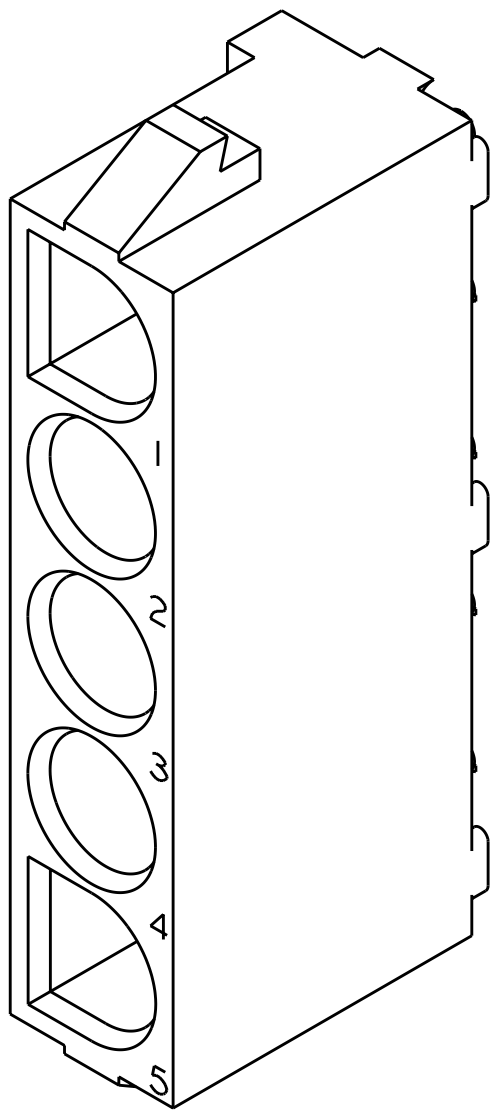
SECTION B-B

33.02  
[1.300]

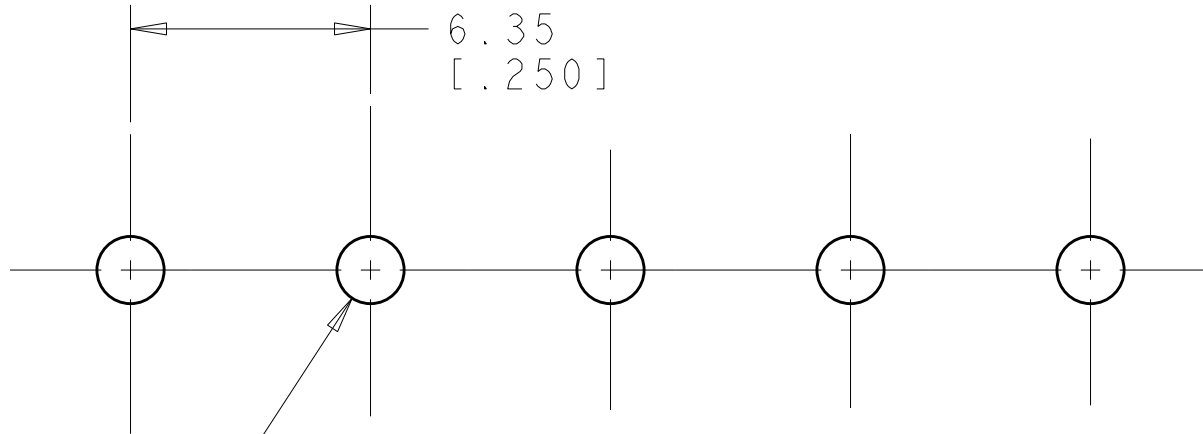


7.62  
[.300]

1. PARTS COMPLY TO AMP SOLDERABILITY SPECIFICATION 109-11-3.
2. CIRCUIT IDENTIFICATION CHARACTERS ARE ADJACENT TO THE INDICATED CAVITIES, BUT LOCATION AND ORIENTATION MAY DIFFER FROM PRINT.
3. DIMENSIONS IN BRACKETS ARE IN INCHES.
4. IDENTIFICATION WILL APPEAR AT CIRCUIT NO. 1, OTHERS OPTIONAL.



SCALE 4:1



Ø1.78±0.07  
[.070±.003]  
5 PLC

RECOMMENDED MOUNTING HOLE PATTERN  
FOR 1.57 [ .062 ] THICK P.C. BOARD

PHOSPOR BRONZE, PRE-TIN	NYLON, UL94V-2, NATURAL	2029361-1
SOCKET CONTACT MATL AND FINISH	HOUSING MATERIAL AND COLOR	PART NUMBER

DIMENSIONS: mm [ INCHES ]		TOLERANCES UNLESS OTHERWISE SPECIFIED:		DWN R. WHITAKER 07MAY04		Tyco Electronics Corporation Harrisburg, PA 17105-3608	
mm [ INCHES ]		0 PLC ± 1 PLC ± 2 PLC ±0.20 [ .008 ] 3 PLC ± 4 PLC ± ANGLES ±0°30'		CHK S. RIDGILL 07MAY04		NAME	
MATERIAL SEE TABLE		FINISH SEE TABLE		APVD S. RIDGILL 07MAY04		PRODUCT SPEC	
						APPLICATION SPEC	
						WEIGHT	
						CUSTOMER DRAWING	
						SIZE CAGE CODE DRAWING NO	
						RESTRICTED TO	
						A 00779 C=2029361	
						SCALE 5:1 SHEET 1 OF 1 REV A	