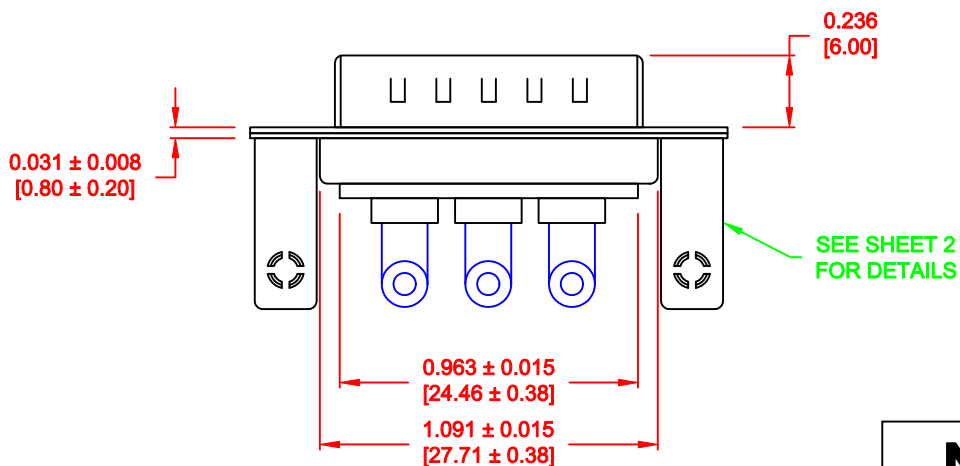
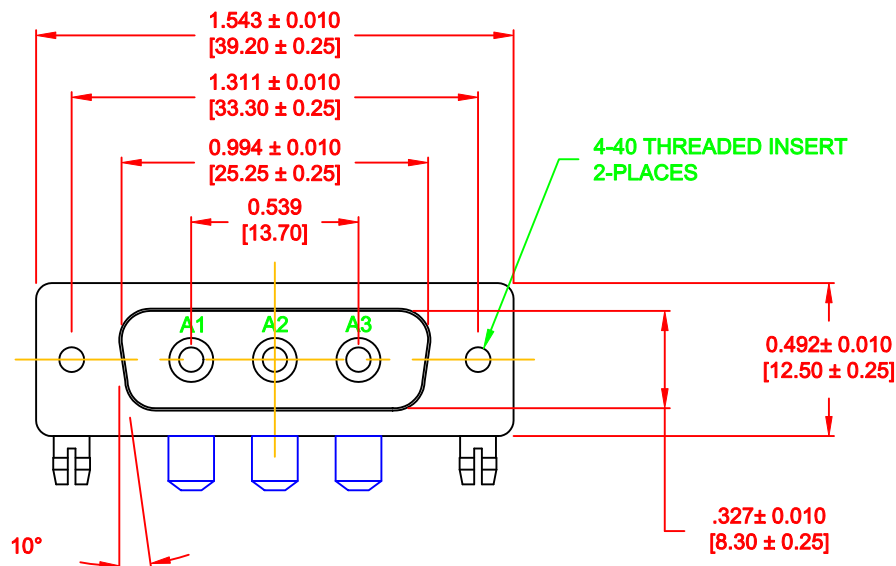


DESCRIPTION: POWER - RIGHT ANGLE - MALE - MACHINED - IP67



SPECIFICATIONS:

ELECTRICAL:

| | |
|--------------------------|--------------------|
| INSULATOR RESISTANCE: | 5 G OHMS Min. |
| DIELECTRIC WITHSTANDING: | 1,000VAC r.m.s. |
| OPERATING TEMPERATURE: | -55° C ~ +155° C |
| CONTACT RESISTANCE: | 1.0 Milliohms Max. |
| POWER PINS: | 40 AMPS |

MECHANICAL:

| | |
|--------------------------|-------------|
| CONTACT INSERTION FORCE: | 4.5 Kg Max. |
| CONTACT SEPARATOR FORCE: | 0.3Kg Min. |

MATERIALS:

| | |
|-------------|---|
| CONTACTS: | COPPER ALLOY |
| INSULATOR: | PBT UL94V-0 RATED, BLK 230°C PROCESS TEMP. |
| SHELL: | STEEL |
| BOARD LOCK: | BRASS, NICKEL PLATED |
| CINCHNUT: | BRASS, NICKEL PLATED |
| BRACKET: | STEEL, NICKEL PLATED |

FINISH:

| | |
|-----------|-----------------|
| SHELL: | NICKEL |
| CONTACTS: | FULL GOLD FLASH |

684S3W3103L461

46 = 4-40 INSERTS /
BOARD LOCKS

MEETS IP67 STANDARDS

(SEE PAGE 2 FOR SEALING DETAILS)

RoHS COMPLIANT



THESE DRAWINGS AND SPECIFICATIONS ARE
THE PROPERTY OF NorComp AND SHALL NOT
BE REPRODUCED, COPIED OR USED AS THE
BASIS FOR THE MANUFACTURE OR SALE OF
APPARATUS WITHOUT WRITTEN PERMISSION.

NorComp

DRAWN:
P. JENKINS

DATE:
8-22-11

CHECKED:

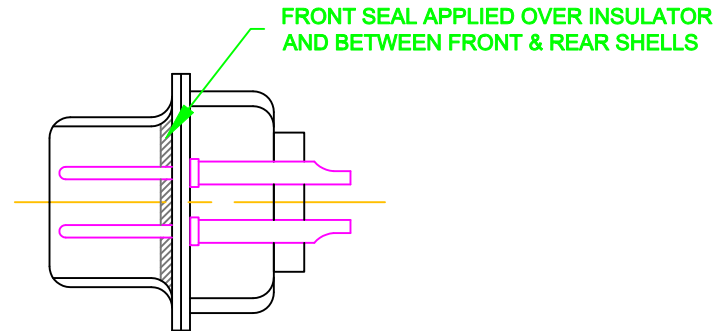
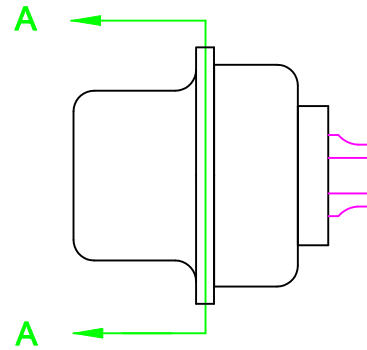
DATE:

SCALE:
1.5 = 1

SHEET
1 OF
3



REV
0

DWG NO.
684S3W3103L461

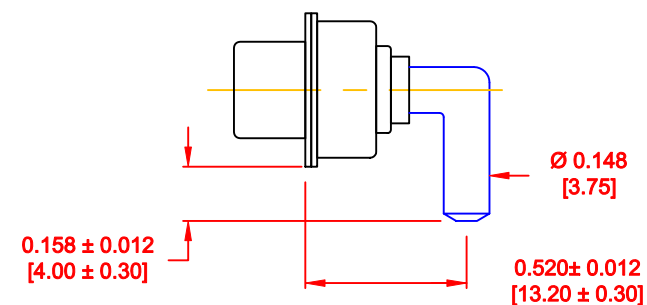
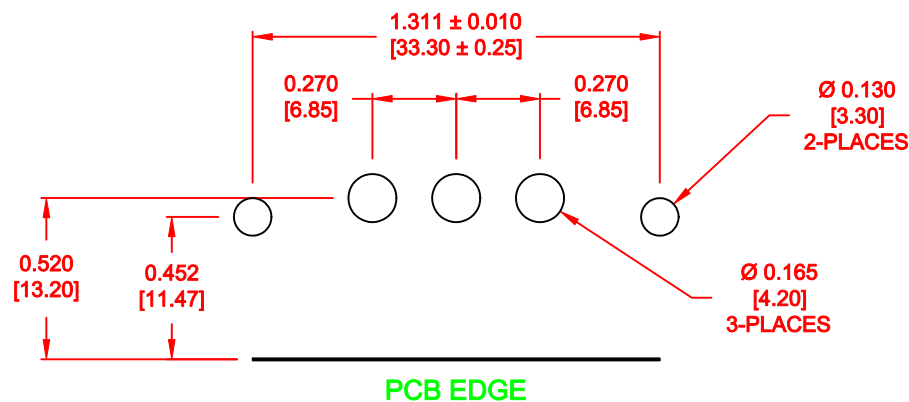


DETAIL A-A
SHOWN FOR REFERENCE ONLY

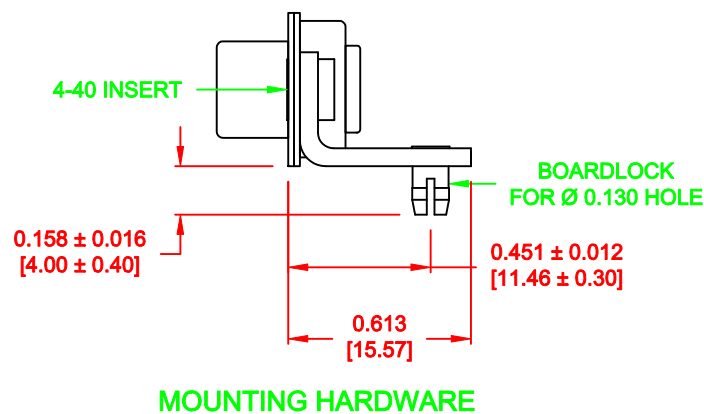
RoHS COMPLIANT

| | | | | | |
|--|---|-------------------------------|-------------------|-------------------------|----------------|
|  | THESE DRAWINGS AND SPECIFICATIONS ARE THE PROPERTY OF NorComp AND SHALL NOT BE REPRODUCED, COPIED OR USED AS THE BASIS FOR THE MANUFACTURE OR SALE OF APPARATUS WITHOUT WRITTEN PERMISSION. | DRAWN: P. JENKINS | | DATE: 8-22-11 | |
| | | CHECKED: | | DATE: | |
|  | | SCALE: 1.5 = 1 | SHEET 2 | | OF 3 |
| | | DWG NO. 684S3W3103L461 | | | |
| | | REV 0 | | | |


NOTE:
POWER CONTACTS COME
PRE-LOADED INTO INSULATORS



40 AMP POWER CONTACT



RoHS COMPLIANT

| | | | | | | |
|--|---|-------------------------------|--|-------------------------|--|-----------------|
|  | THESE DRAWINGS AND SPECIFICATIONS ARE THE PROPERTY OF NorComp AND SHALL NOT BE REPRODUCED, COPIED OR USED AS THE BASIS FOR THE MANUFACTURE OR SALE OF APPARATUS WITHOUT WRITTEN PERMISSION. | DRAWN: P. JENKINS | | DATE: 8-22-11 | | |
| | | CHECKED: | | DATE: | | |
| NorComp | | SCALE: 1.5 = 1 | | SHEET OF 3 3 | | REV 0 |
| | | DWG NO. 684S3W3103L461 | | | | |