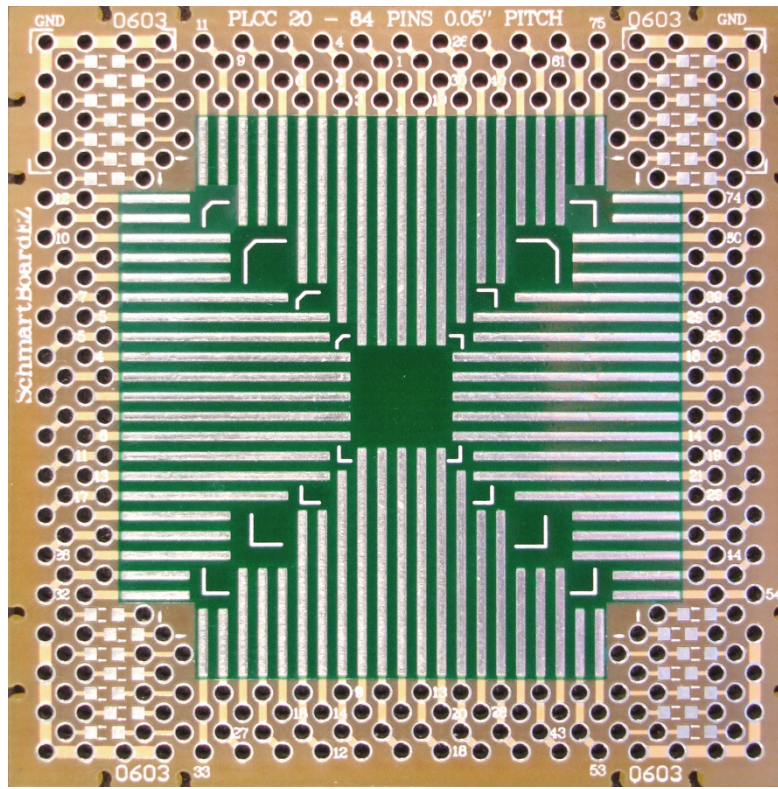
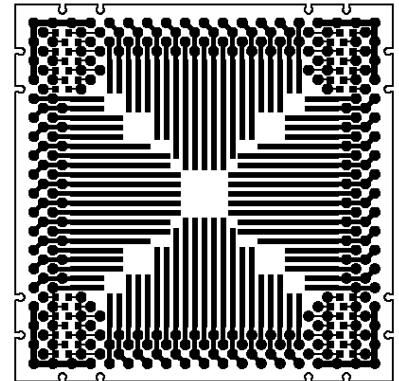


202-0012-01 0.05" Pitch for PLCC, 20-80 Pins With Schmartboard|ez™ Technology



Actual Size



Support up to 84 pins PLCC package IC with 0.05" pitch, 26 pcs. of 0603 package, and some thru hole passive components. 14 ground holes are connected a copper plane on the bottom side.

This 2" x 2" Schmartboard utilizes "Schmartboard|ez". Only Schmartboard has this patented technology to assure fast, easy and flawless hand soldering of surface mount components!

Related Part Numbers:

912-0012-01: 10 Pack of 202-0012-01 Schmartboards

Schmartboard|ez Surface Mount Family



Schmartboard, Inc.
37423 Fremont Blvd.
Fremont, CA 94536

510-744-9900(P)
510-744-9909(F)
<http://www.schmartboard.com>
<http://www.facebook.com/Schmartboard>
<http://www.twitter.com/Schmartboard>