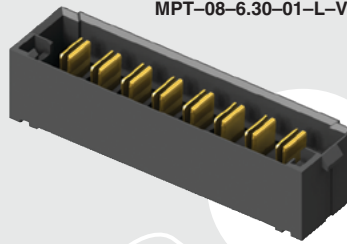
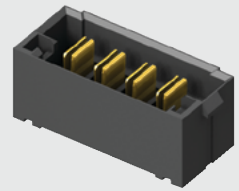


(5.00 mm) .1969"

MPT-08-6.30-01-L-V



MPT-04-6.30-01-L-V

**MPT SERIES**

# 30 A DUAL BLADE HEADER

## SPECIFICATIONS

For complete specifications  
see [www.samtec.com?MPT](http://www.samtec.com?MPT)

### Insulator Material:

Black LCP

### Terminal Material:

Copper Alloy

### Plating:

Sn or Au over

50  $\mu$ " (1.27  $\mu$ m) Ni

### Operating Temp Range:

-55 °C to +105 °C with Tin;

-55 °C to +125 °C with Gold

### Voltage Rating:

575 VAC/812 VDC

### Standard Creepage:

(2.86 mm) .113"

### Standard Clearance:

(2.71 mm) .106"

### RoHS Compliant:

Yes

### Lead-Free Solderable:

Yes

### Board Mates:

MPS

### Cable Mates:

MPSS

MPT-V/MPS-V	
POWER PINS	CURRENT RATING (PER CONTACT)
1	28.8 A
2	24.7 A
3	24.1 A
4	22.3 A
8	18.5 A
-T PLATING	

Dual leaf  
blade  
contacts

5.00 mm  
pitch

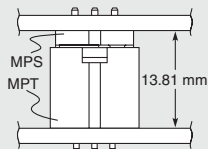
Polarized  
alignment  
feature

## RECOGNITIONS

For complete scope of  
recognitions see  
[www.samtec.com/quality](http://www.samtec.com/quality)



## MATED HEIGHT



MPT	POWER PINS	LEAD STYLE	TAIL LENGTH	PLATING OPTION	V
	-02, -03, -04, -06, -08	-6.30 = (6.30 mm) 0.248"	-01 = Use with (1.60 mm) .062" Thick PCB  -03 = Use with (2.36 mm) .093" Thick PCB	-L = 10 $\mu$ " (0.25 $\mu$ m) Gold on contact, Matte Tin on tail  -T = Matte Tin	

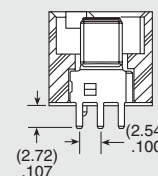
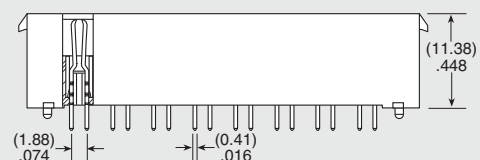
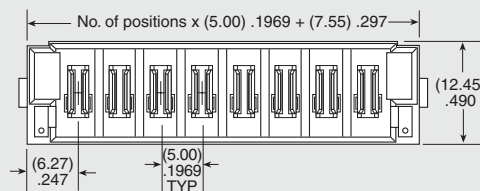
## OTHER SOLUTIONS

- Power/Signal combination Headers (see MPTC Series)
- High Power Headers. (see PET Series)
- Right-angle (see MPT-RA Series)

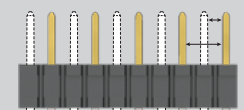
## ALSO AVAILABLE (MOQ Required)

- Locking Clip (Manual placement required)

**Note:** Some sizes, styles and options are non-standard, non-returnable.



## CREEPAGE AND CLEARANCE



Selectively loading contacts achieves customer specific creepage and clearance requirements.

Contact [asp@samtec.com](mailto:asp@samtec.com)

Due to technical progress, all designs, specifications and components are subject to change without notice.

**WWW.SAMTEC.COM**

All parts within this catalog are built to Samtec's specifications.

Customer specific requirements must be approved by Samtec and identified in a Samtec customer-specific drawing to apply.