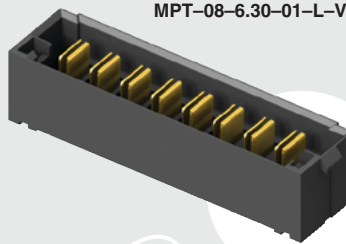
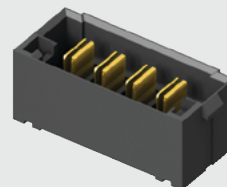


(5.00 mm) .1969"

MPT-08-6.30-01-L-V



MPT-04-6.30-01-L-V

**MPT SERIES**

30 A DUAL BLADE HEADER

SPECIFICATIONS

For complete specifications
see www.samtec.com?MPT

Insulator Material:

Black LCP

Terminal Material:

Copper Alloy

Plating:

Sn or Au over
50 μ" (1.27 μm) Ni

Operating Temp Range:

-55 °C to +105 °C with Tin;
-55 °C to +125 °C with Gold

Voltage Rating:

575 VAC/812 VDC

Standard Creepage:

(2.86 mm) .113"

Standard Clearance:

(2.71 mm) .106"

RoHS Compliant:

Yes

Lead-Free Solderable:

Yes

Board Mates:

MPS

Cable Mates:

MPSS

MPT-V/MPS-V	
POWER PINS	CURRENT RATING (PER CONTACT)
1	28.8 A
2	24.7 A
3	24.1 A
4	22.3 A
8	18.5 A
-T PLATING	

Dual leaf
blade
contacts

5.00 mm
pitch

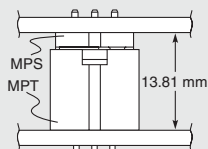
Polarized
alignment
feature

RECOGNITIONS

For complete scope of
recognitions see
www.samtec.com/quality



MATED HEIGHT



MPT

POWER PINS

LEAD STYLE

TAIL LENGTH

PLATING OPTION

V

-02, -03,
-04, -06, -08

-6.30
= (6.30 mm)
0.248"

-01
= Use with
(1.60 mm) .062"
Thick PCB

-03
= Use with
(2.36 mm) .093"
Thick PCB

-L
= 10 μ" (0.25 μm)
Gold on contact,
Matte Tin on tail

-T
= Matte Tin

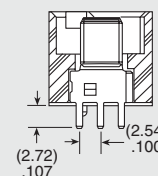
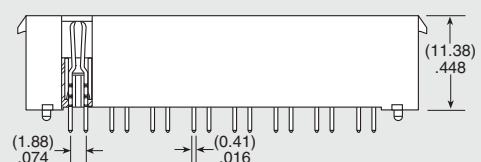
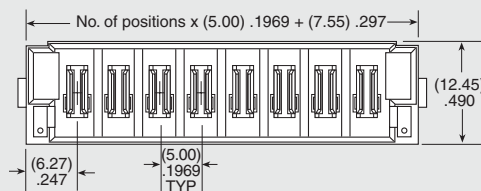
OTHER SOLUTIONS

- Power/Signal combination Headers (see MPTC Series)
- High Power Headers. (see PET Series)
- Right-angle (see MPT-RA Series)

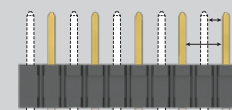
ALSO AVAILABLE (MOQ Required)

- Locking Clip (Manual placement required)

Note: Some sizes, styles and options are non-standard, non-returnable.



CREEPAGE AND CLEARANCE



Selectively loading contacts achieves customer specific creepage and clearance requirements.
Contact asp@samtec.com

Due to technical progress, all designs, specifications and components are subject to change without notice.

WWW.SAMTEC.COM

All parts within this catalog are built to Samtec's specifications.

Customer specific requirements must be approved by Samtec and identified in a Samtec customer-specific drawing to apply.