

SAFETY ORGANIZATION(S):

THIS FILTER HAS BEEN FORMALLY RECOGNIZED, CERTIFIED OR APPROVED BY THE LISTED AGENCY. THEREFORE, ALL TEST/REQUIREMENTS SPECIFIED IN THE LATEST REVISION OF THE FOLLOWING AGENCY STANDARDS HAVE BEEN MET:

UL RECOGNIZED
UL 1283
CSA CERTIFIED
CSA 22.2, NO. 0, 0.4, 8
VDE APPROVED
VDE 565-3

OPERATING SPECIFICATIONS:

LINE VOLTAGE/CURRENT:
3.0 AMP., 120/250 VAC
2.5 AMP./40°C, 250 VAC

LINE FREQUENCY:
50-60Hz
40°C

MAX. CASE RISE θ RATED CURRENT:

MAX. LEAKAGE CURRENT, EACH

LINE TO GROUND
0.5mA at 120V 60 Hz

OPERATING AMBIENT TEMP. RANGE:
1.0 mA at 250V 50 Hz

-10°C TO +40°C θ RATED CURRENT, I_r

IN AN AMBIENT, T_a , HIGHER THAN 40°C, THE MAXIMUM OPERATING

CURRENT, I_o , IS AS FOLLOWS:

$$I_o = I_r \sqrt{\frac{85 - T_a}{45}}$$

RELIABILITY SPECIFICATIONS:

STORAGE TEMPERATURE:
-40°C TO +85°C

HUMIDITY:
21 DAYS θ 40°C 95% RH

CURRENT OVERLOAD TEST:
6 TIMES RATED CURRENT FOR 8 SECONDS

TEST SPECIFICATIONS:

INDUCTANCE:
1.02 mH NOMINAL

CAPACITANCE: (MEASURED θ 1 KHz, 0.25 VAC MAX., 25°C \pm 1°C)

LINE TO GROUND:
.011 μ F \pm 20%

LINE TO LINE:
.543 μ F \pm 20%

DISCHARGE RESISTOR:
330 K Ω

LINE/GROUND AND LINE/LINE
6000 M Ω (MIN) AT 100 VDC

INSULATION RESISTANCE
20°C AND 50% RH
(W/O DISCHARGE RESISTOR)

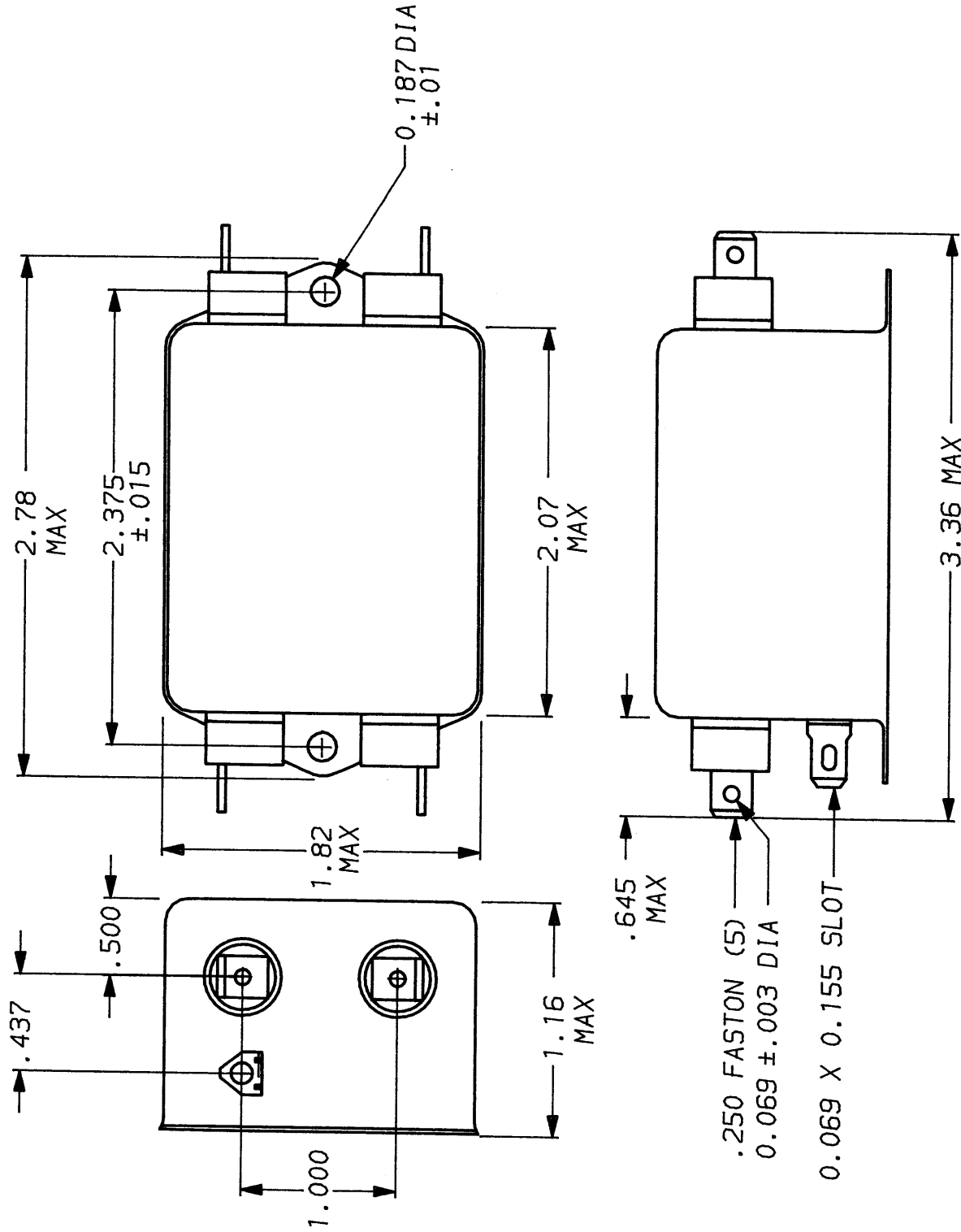
RECOMMENDED RECEIVING INSPECTION HIPOT:

LINES TO GROUND:
2250 VDC FOR 1 MINUTE

LINE TO LINE:
1450 VDC FOR 1 MINUTE

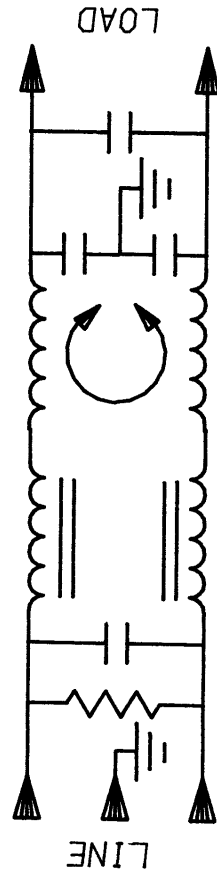
FILTER APPROVAL:

THE BEST WAY TO SELECT AND QUALIFY A FILTER IS FOR YOUR ENGINEERING TO TEST THE UNIT IN YOUR EQUIPMENT.



50 Ω - 50 Ω (MINIMUM) INSERTION LOSS							
FREQUENCY MHz	.15.5	1	2	5	10	20	30
COMMON dB	15	27	35	40	45	47	47
DIFF. dB	35	65	65	65	62	50	40
							45

This document is proprietary to CORCOM INC. and is not to be reproduced nor used for manufacturing purposes except on CORCOM's order or prior written consent.



TOLERANCE EXCEPT AS NOTED
DECIMAL: .XXX .XX .X ANGLES \pm 1°
ENGLISH: \pm .025
METRIC: \pm —

MATERIAL:
AS SUPPLIED

FINISH:
AS SUPPLIED



LIBERTYVILLE, IL 60048

POWER LINE FILTER

SCALE	DATE	DRG. NO.	REV.
NTS	9-12-89	3VS1.06	
DRW. BY	ORIGINATOR		
TDL	CW		