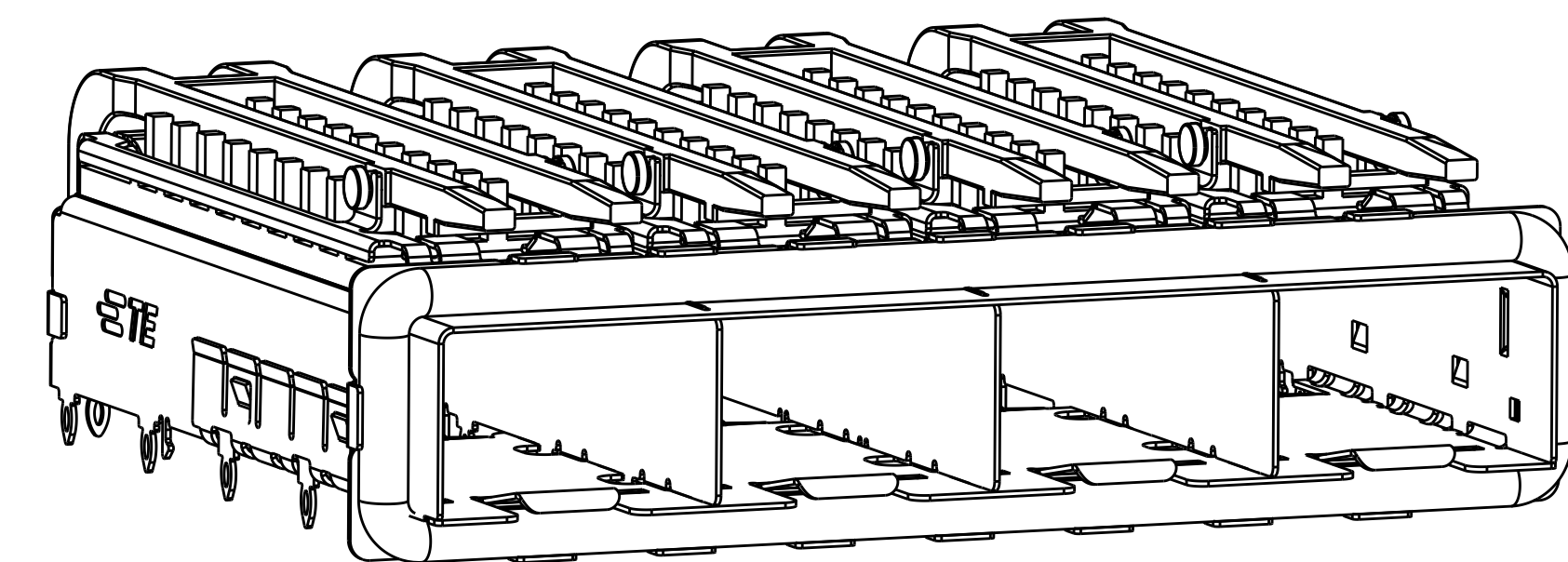
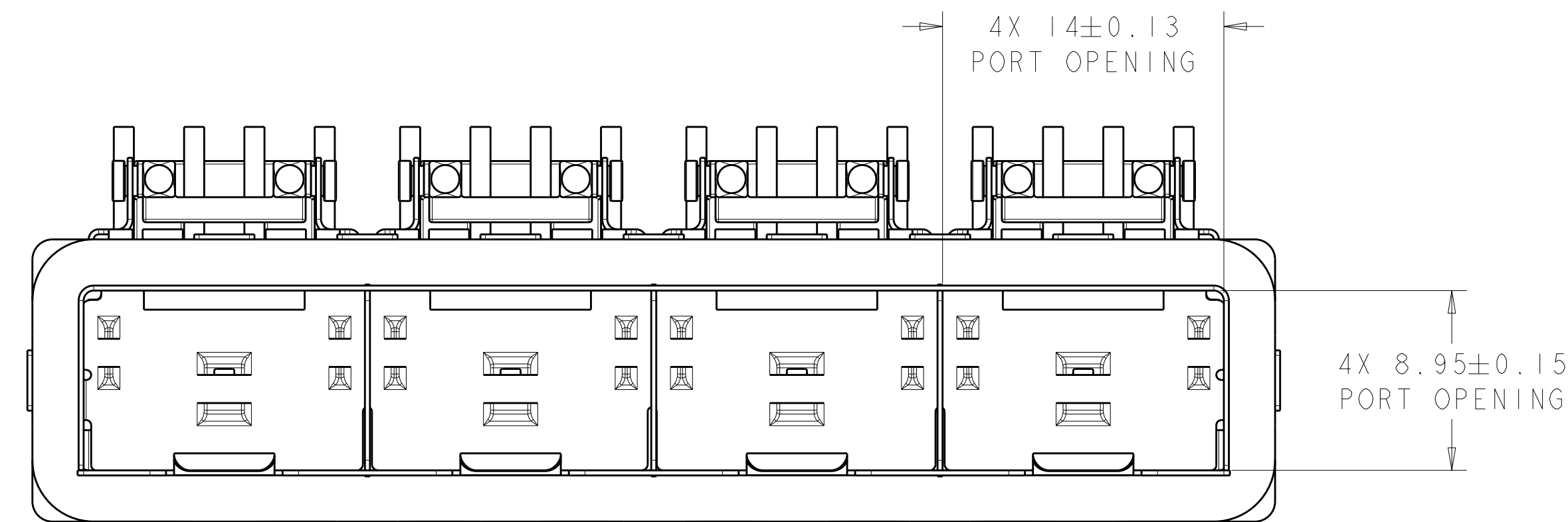

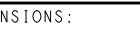




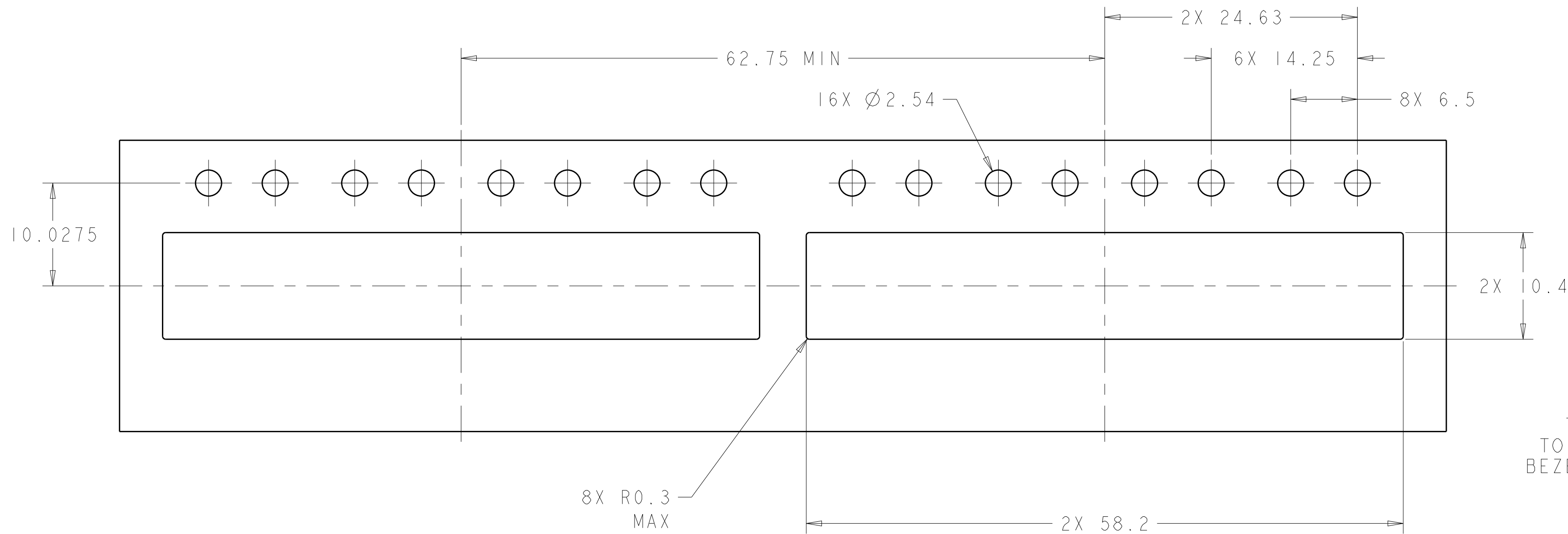
- △0. MINIMUM PC BOARD THICKNESS:
SINGLE SIDED: 1.5mm
11. CERTAIN MATING TRANCEIVERS MAY REQUIRE ADDITIONAL PCB THICKNESS THAT WOULD NEED TO BE DETERMINED BY THE CUSTOMER.
12. PRODUCT COMPLIES WITH SPECIFICATION SFF-8433 IMPROVED PLUGGABLE FORM FACTOR FOR SFP+ GANGED CAGES.
- △3. DIMENSION APPLIES PRIOR TO INSERTION OF SFP MODULE.
- △4. HEATSINK, HEATSINK CLIP, AND LIGHTPIPE SHIPPED UNASSEMBLED TO CAGE ASSEMBLY. CAGE ASSEMBLY TO BE PRESSED INTO PCB PRIOR TO ATTACHING HEATSINK, HEATSINK CLIP, AND LIGHTPIPE TO THE CAGE ASSEMBLY.
- △5. PACKAGED AS A COMPLETE ASSEMBLY.



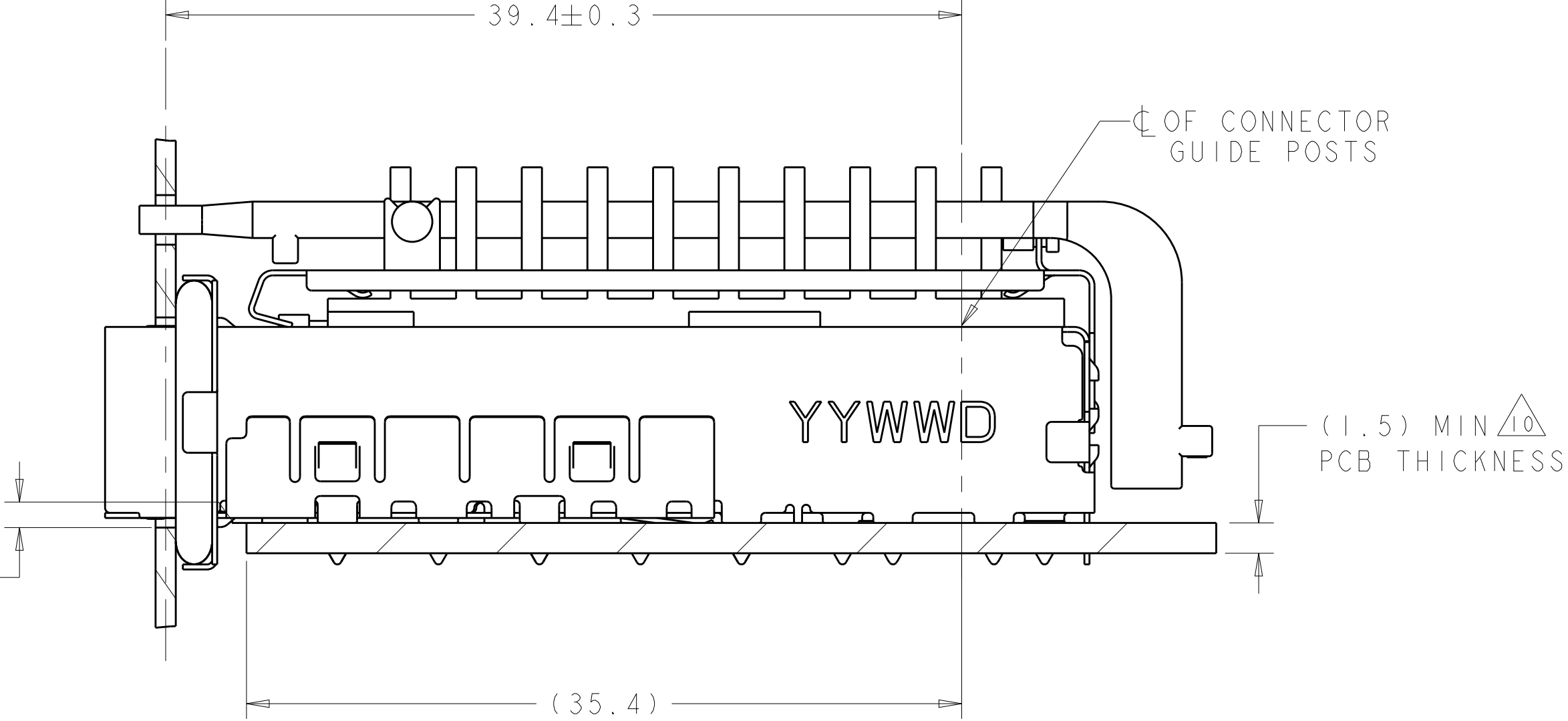
	15.3	N/A	NO HEAT SINK	2198243-6
	15.3	14.9	SAN	2198243-5
△	15.9	22.5	NETWORKING, TALL	2198243-4
△	15.9	18.1	NETWORKING, SHORT	2198243-3
	15.9	15.5	SAN	2198243-2
△	15.9	13.2	PCI	2198243-1
	B	A MAX	APPLICATION	PART NUMBER

THIS DRAWING IS A CONTROLLED DOCUMENT. DIMENSIONING AND TOLERANCING PER ASME Y14.5M-2009		OWN B. MATTHEWS	200CT2011		
DIMENSIONS:		CHK M. SCHMITT	200CT2011	 TE Connectivity	
TOLERANCES UNLESS OTHERWISE SPECIFIED:		APVD M. SCHMITT	200CT2011	NAME SFP+ ENHANCED 1X4 CAGE ASSEMBLY, PRESS FIT, EMI GASKET WITH HEATSINK AND LIGHTPIPE	
mm	 0 PLC ± 0.1 1 PLC ± 0.1 3 PLC ± 0.1 4 PLC ± 0.1 ANGLE $\pm 1^\circ$	PRODUCT SPEC 108-2364 APPLICATION SPEC 114-13120	SIZE CAGE CODE DRAWING NO A100779C-2198243		
MATERIAL	FINISH	WEIGHT	RESTRICTED TO		
1	2	Customer Drawing	SCALE	SHEET	REV
			4:1	1 of 4	REV A

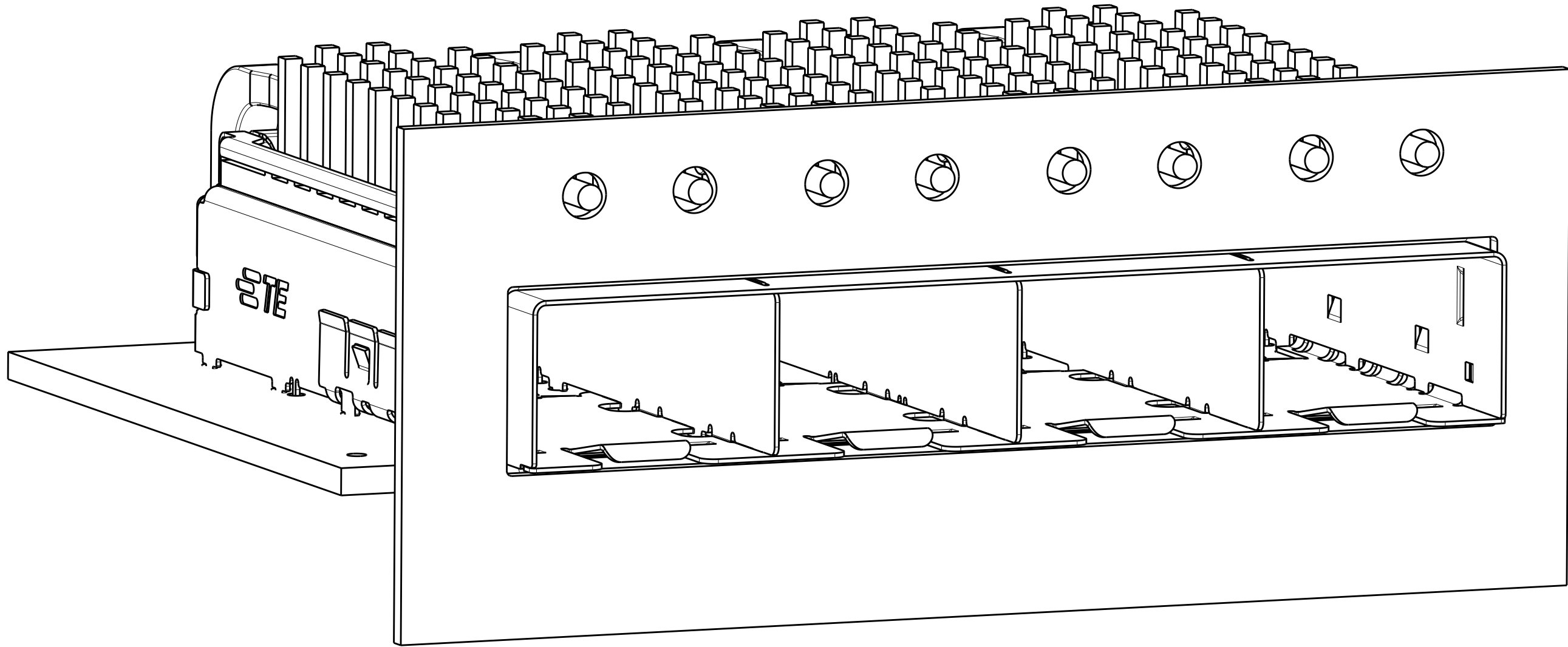
LOC	DIST	REVISIONS					
		P	LTR	DESCRIPTION	DATE	DWN	APVD
GP	00	-	-	SEE SHEET 1	-	-	-



RECOMMENDED BEZEL CUT-OUT
SINGLE SIDED APPLICATIONS
SCALE 3:1

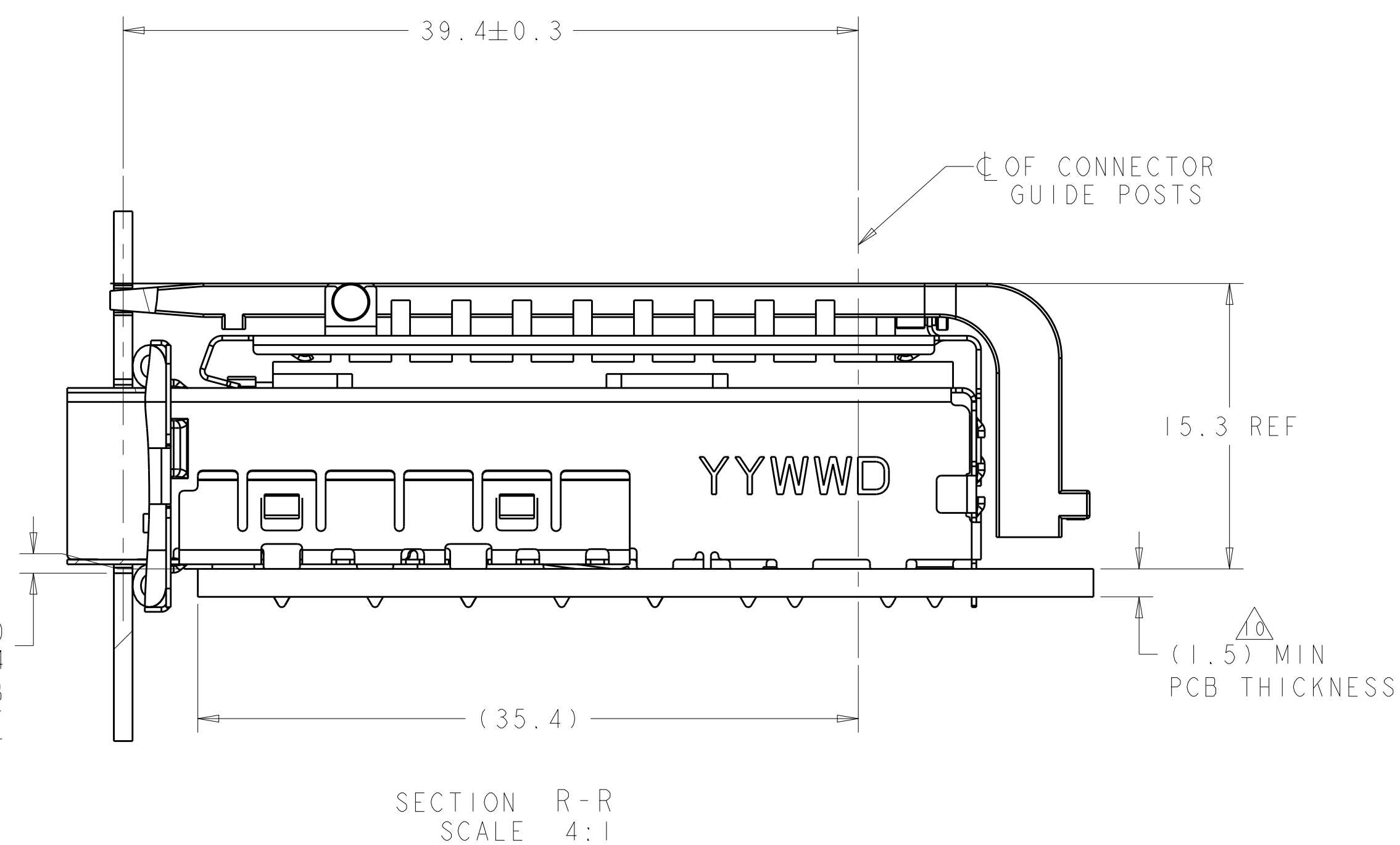


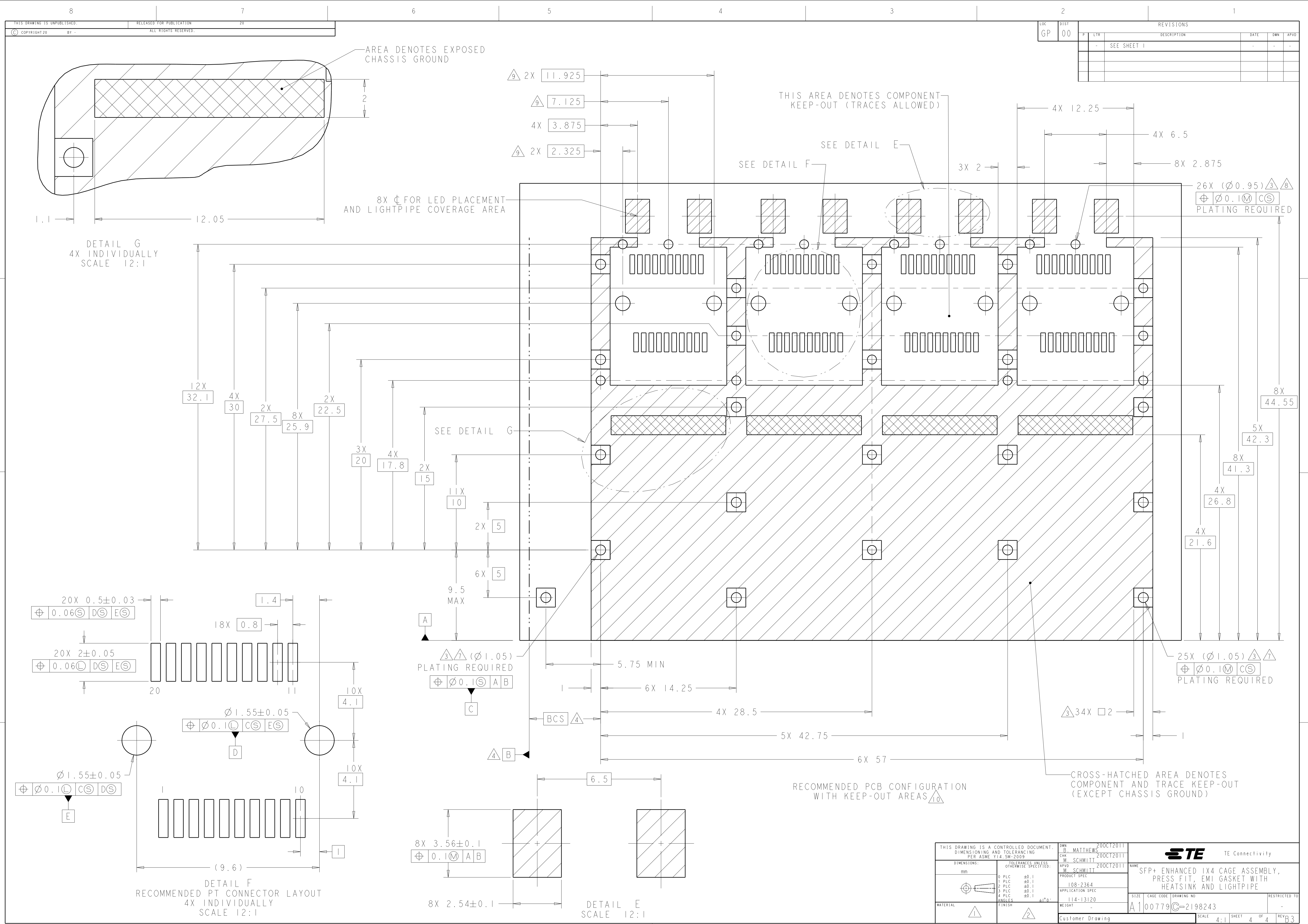
2198243
MOUNTED ON PC BOARD
SHOWN THRU RECOMMENDED BEZEL



2198243
MOUNTED ON PCB
SHOWN THRU RECOMMENDED BEZEL

THIS DRAWING IS A CONTROLLED DOCUMENT. DIMENSIONING AND TOLERANCING PER ASME Y14.5M-2009		DWN B. MATTHEWS 20OCT2011	TE Connectivity	
		CHK M. SCHMITT 20OCT2011		
DIMENSIONS: mm		APVD M. SCHMITT 20OCT2011	NAME SFP+ ENHANCED 1X4 CAGE ASSEMBLY, PRESS FIT, EMI GASKET WITH HEATSINK AND LIGHTPIPE	
TOLERANCES UNLESS OTHERWISE SPECIFIED:		PRODUCT SPEC		
0 PLC ±0.1		108-2364	SIZE A100779	
1 PLC ±0.1		APPLICATION SPEC		
2 PLC ±0.1		114-13120	CAGE CODE C=2198243	
3 PLC ±0.1		WEIGHT		
4 PLC ±0.1		Customer Drawing	RESTRICTED TO -	
ANGLES ±1°		SCALE 4:1		
FINISH		SHEET 2 OF 4	REV B3	

4805 (3/11)



LOC		DIST		REVISONS			
GP		00		DATE	OWN	APVD	
				DATE	OWN	APVD	
				DATE	OWN	APVD	
				DATE	OWN	APVD	