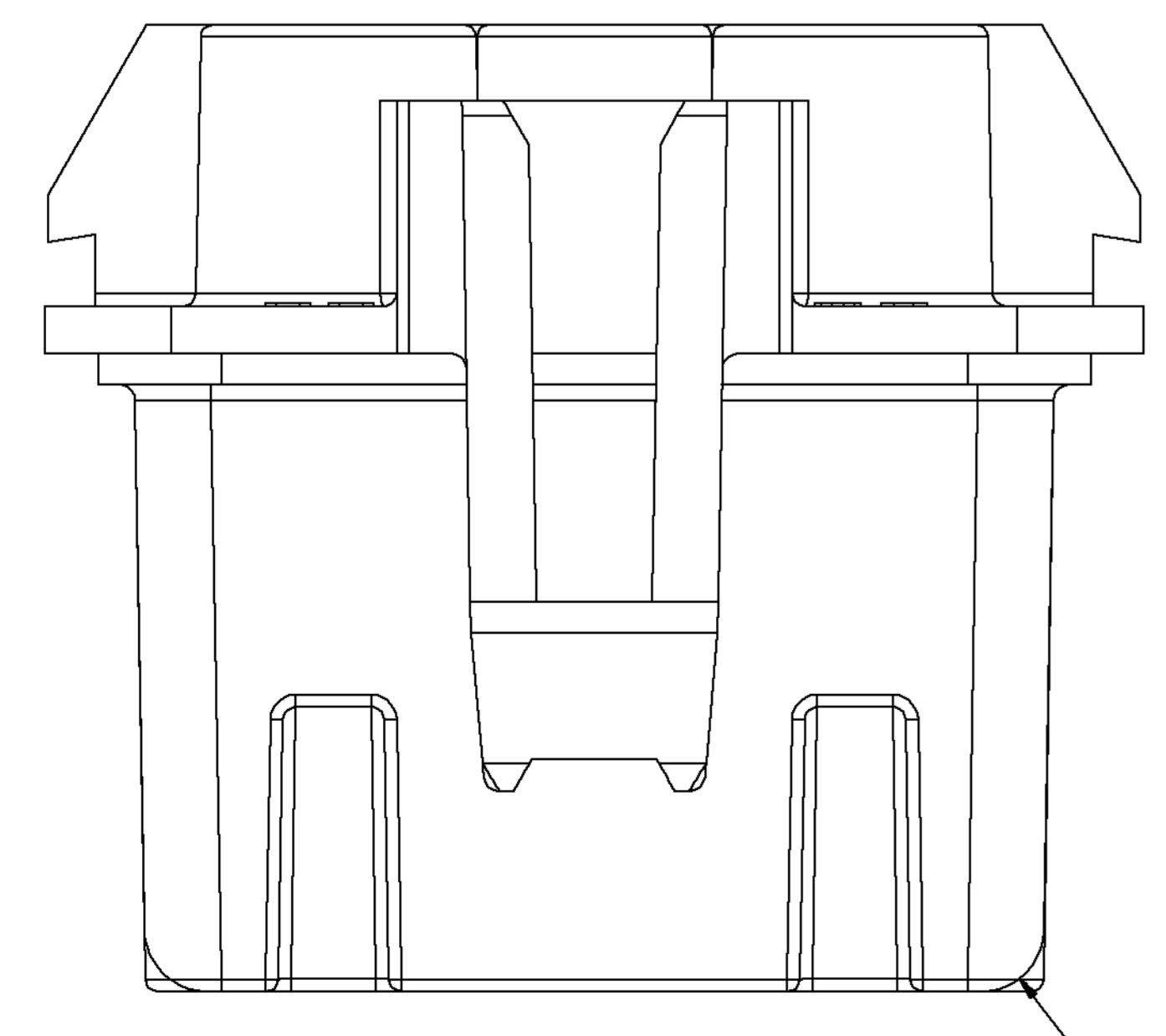
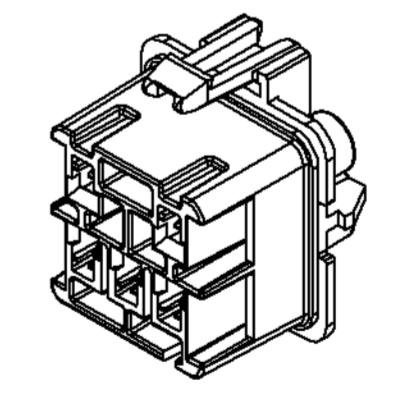
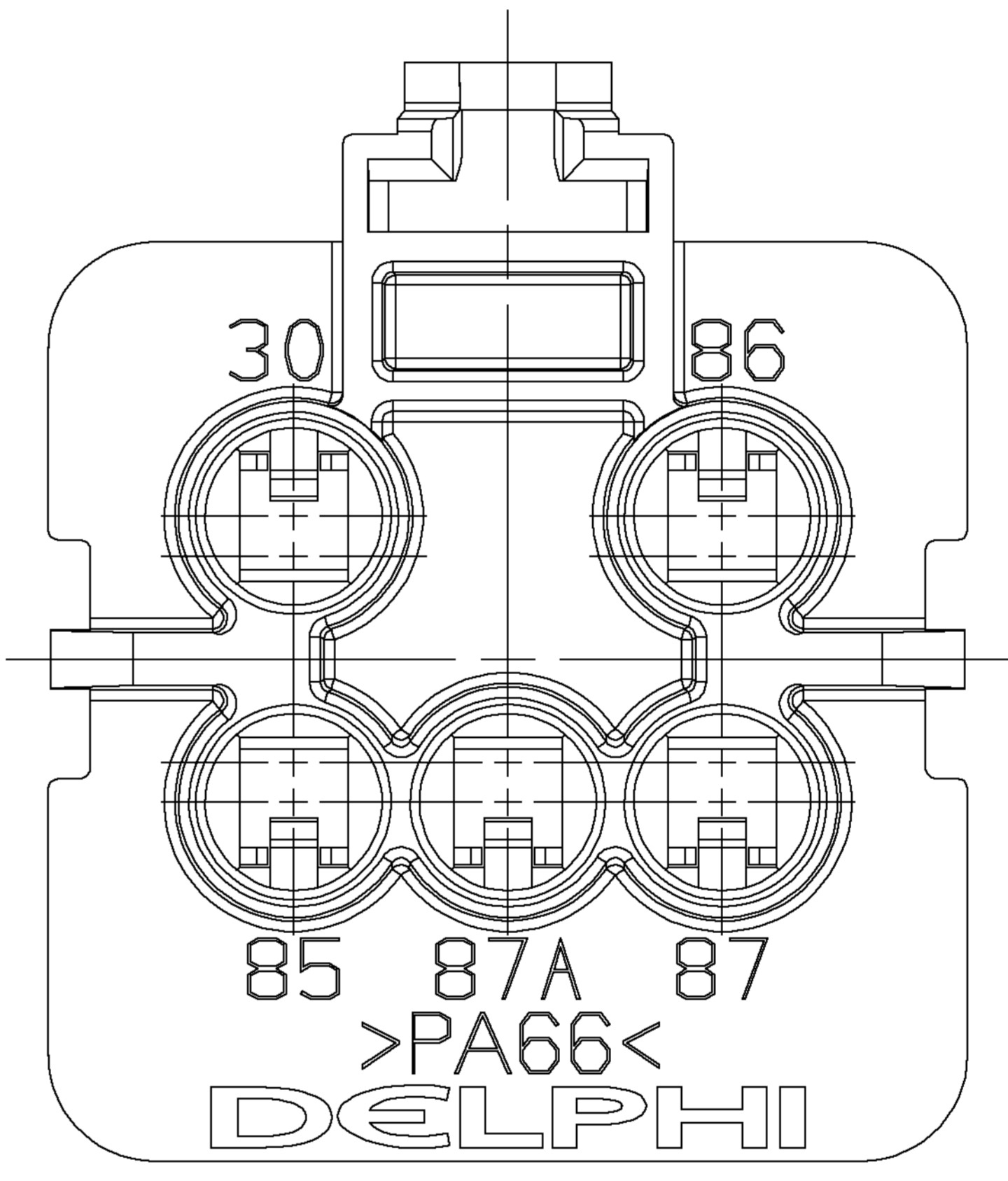
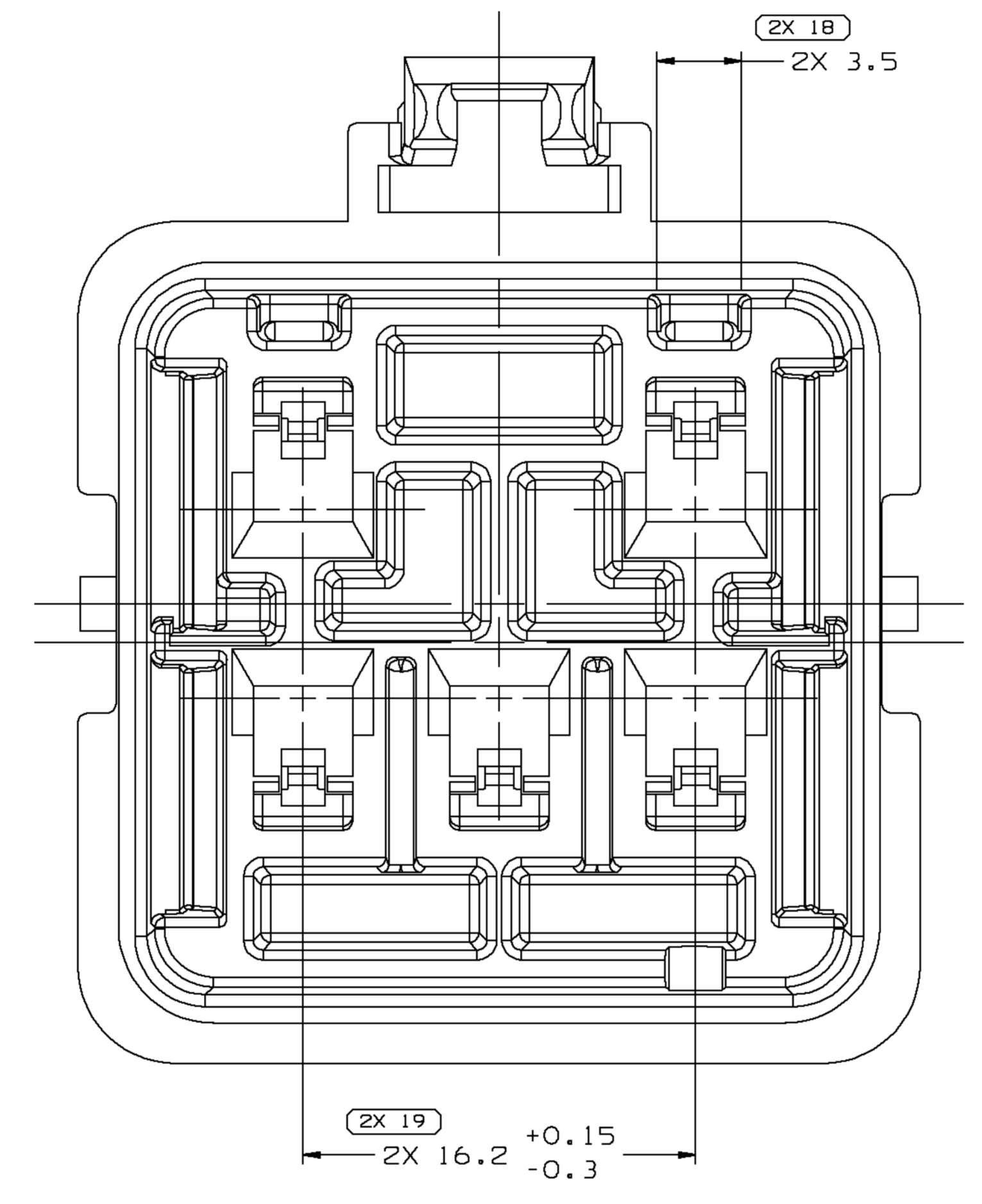
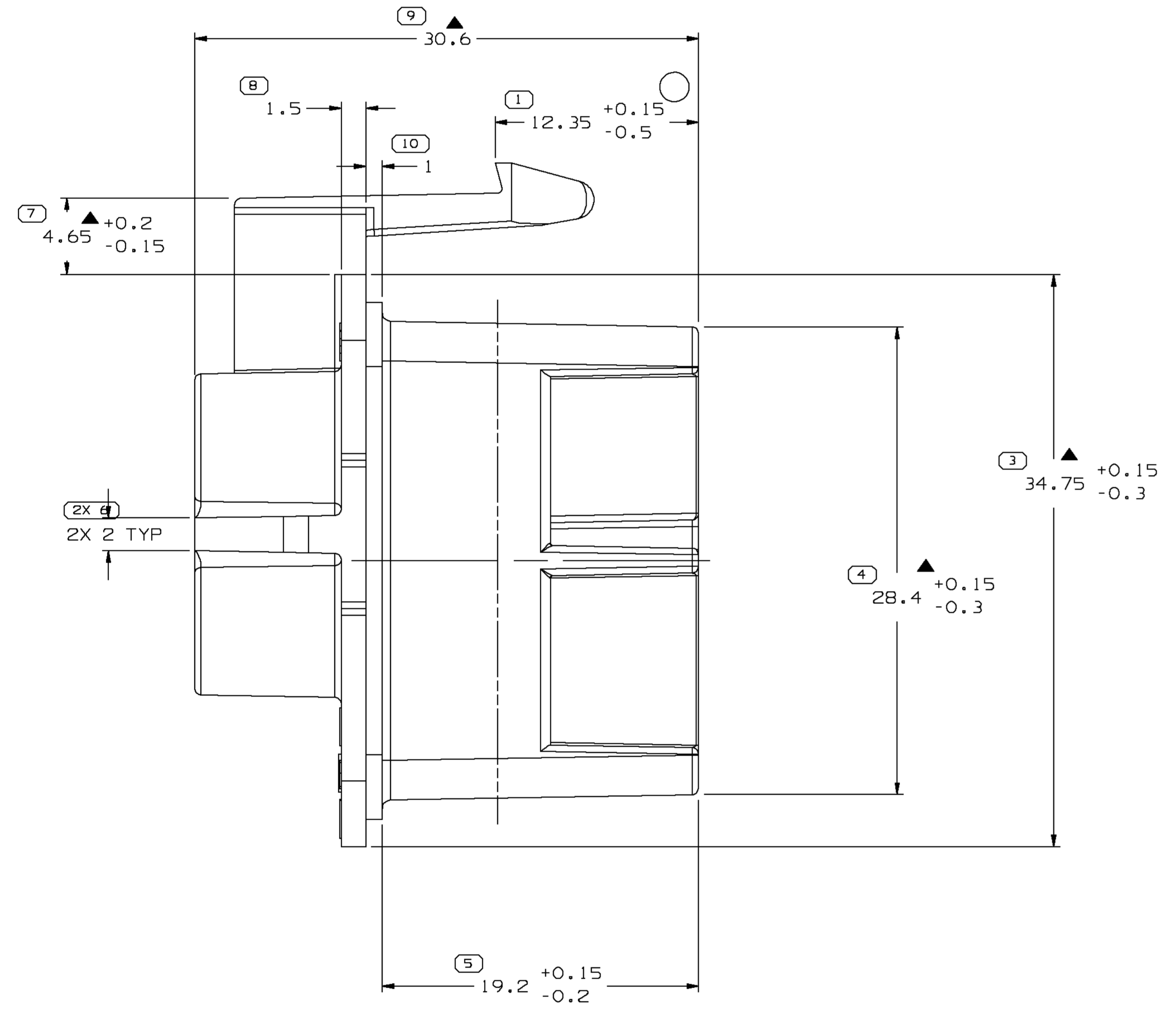
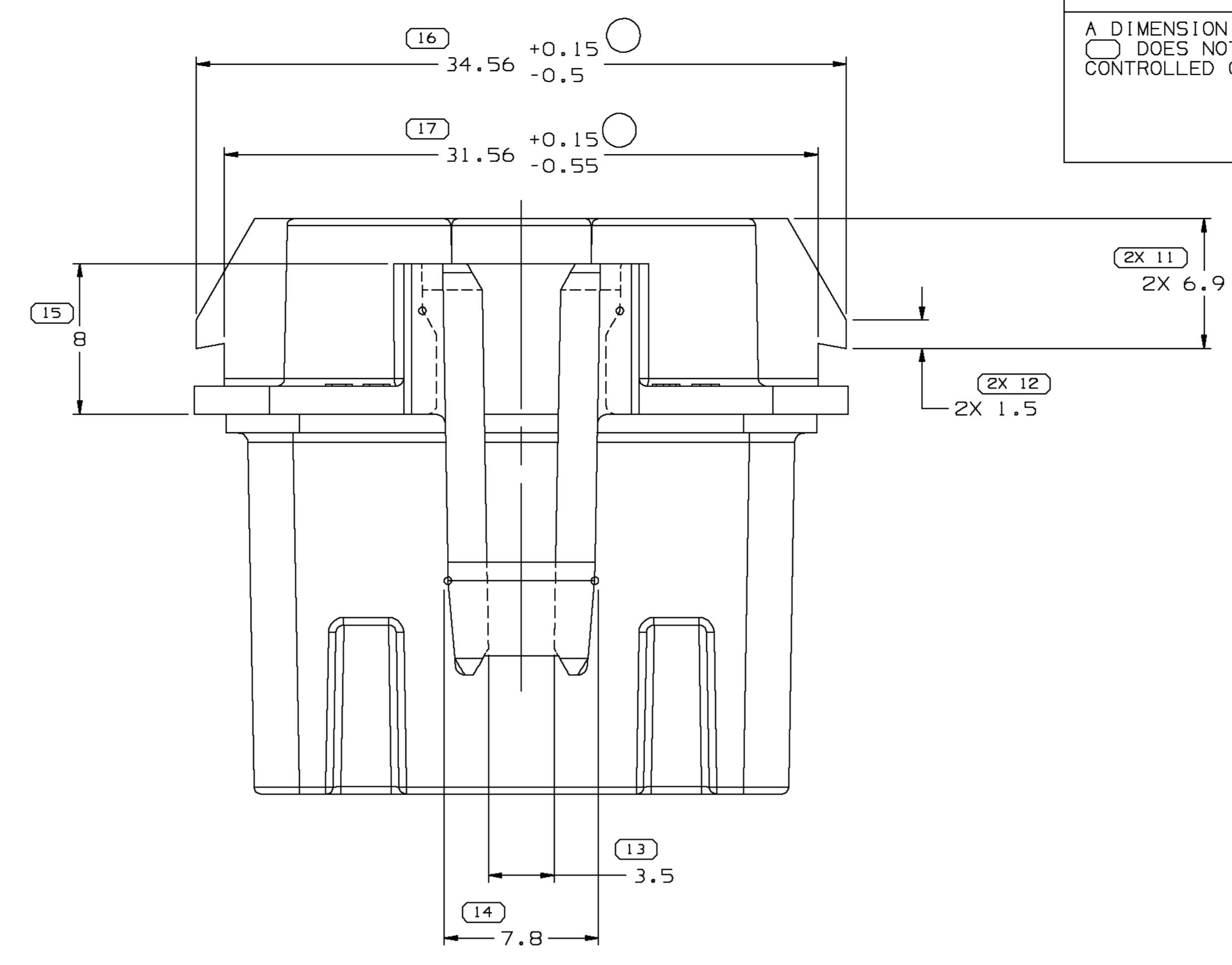
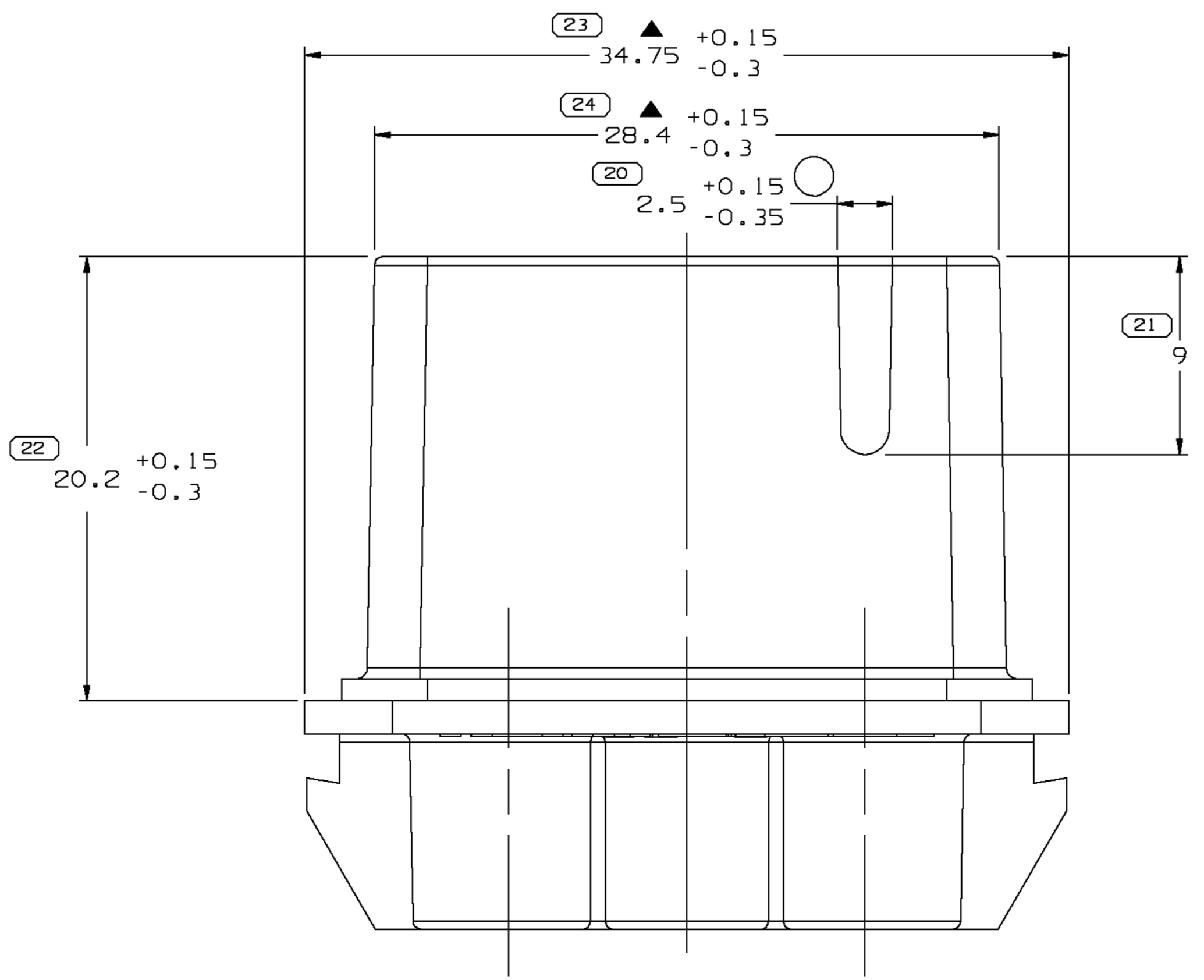


SYMBOL DEFINITION		TOTAL NO OF INSPECTIONS REQUIRED	
A DIMENSION WITHOUT AN INSPECTION REPORT SYMBOL DOES NOT REQUIRE INSPECTION. IT MAY BE CONTROLLED ON THE INDIVIDUAL COMPONENT DRAWING.		32	
	LAST NO. USED	25	

DWG STATUS				REVISION HISTORY				AUTH		DR		APVD	
DATE	STG	REV	W/P	CHG	ZONE								
29NO01	R	F2	-	-				REDRAWN TO PD, ADDED OPT CONSTRUCTION & MATERIAL RECYCLING CODE NOTES & REVISED MATERIAL SPEC	217939	EOV	EOV	1	RC
27FE02	R	F3	-	-				REVISED GRAPHICS OF CAVITIES 30 & 86	221776	EOV	EOV	2	ET
18MR02	R	F4	-	-				ADDED OPTIONAL CONSTRUCTION VIEW & DIM	222506	LEG	BEG		RC
21AU03	R	F5	-	-				2.5 +0.15/-0.35 WAS 2.5 ±0.15, 12.35 +0.15/-0.5 WAS 34.56 +0.15/-0.35, 31.56 +0.15/-0.55 WAS 31.56 +0.15/-0.3 & REMOVED DIM	244947	RCH	RCH		RC

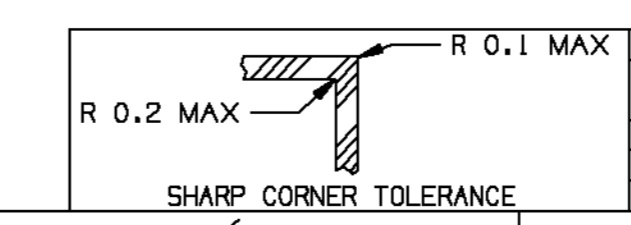


OPTIONAL CONSTRUCTION  
4X R 2 ±0.3



NOTES

- UNLESS OTHERWISE SPECIFIED AND/OR INDICATED: DIMENSIONS ARE TO FACE OF VIEW SHOWN AND AUTOMATICALLY ROUNDED BY COMPUTER FOR INSPECTION (SEE MATH MODEL FOR PRECISE DIMENSIONS). FOR ALL OTHER DIMENSIONS NOT SHOWN BUT REQUIRED FOR TOOL BUILD, SEE MATH MODEL FOR PRECISE TOOL PATH DATA.
- MATERIAL RECYCLING CODE >PA66< PER SAE J1344. (2.31X(0.1)) RAISED CHARACTERS AS SHOWN TO BE LOCATED ON ANY EXTERIOR SURFACE. OPTIONAL CONSTRUCTION TO BE NO MATERIAL RECYCLING CODE.
- MATING COMPONENTS OR EQUIVALENT:  
RELAY
- THIS PART IS CONTROLLED FOR AUTOMATIC FEEDING AS DENOTED ON DRAWING WITH ▲.
- THIS PART ACCEPTS THE FOLLOWING COMPONENTS OR EQUIVALENT: CAVITIES TO ACCEPT 12129409 TERMINAL SECONDARY TERMINAL LOCK 12110540 CONNECTOR SEAL 12065663 CABLE SEAL 12015323 SEE DETAIL DRAWING FOR COMPATIBLE O.D. RANGE CONNECTOR POSITION ASSURANCE LOCK 12052834
- (2.31X(0.1)) RAISED DELPHI CORPORATE BRAND TO BE LOCATED ON ANY EXTERIOR SURFACE, PREFERABLY VISIBLE AT FINAL ASSEMBLY. OPTIONAL CONSTRUCTION TO BE "PED" OR NO LOGO.



FROM	TO	TOLERANCE UNLESS OTHERWISE SPECIFIED
0	20	±0.15
20	30	±0.2
30	50	±0.3
50	70	±0.4
70	100	±0.5
100	150	±0.6
150	200	±0.8
200	250	±1
250	300	±1.2
300	400	±1.5

DWO TYPE PART DRAWING	
STYLE	
VOLUME (COP)	12,779
ROUTING	6900
UNLESS OTHERWISE SPECIFIED	
THIS DOCUMENT IS IN ACCORDANCE WITH ASME Y14.5M-1994 AS AMENDED BY THE ON-BLANK DIMENSIONING AND TOLERANCING ADDENDUM-2009. SEPARATE PATTERNS OF FEATURES MAY BE DIMED SEPARATELY, REGARDLESS OF DATUM REFERENCES.	
ALL DIMENSIONS ARE IN MILLIMETERS	

**DELPHI**  
DELPHI PACKARD ELECTRIC SYSTEMS  
WARREN, OH

DR	DATE
APVD1 M.A. CHAPIN	10JA90
APVD2 M. KOTY	01MY91
APVD3 J.A. GRABIEC	01MY91
APVD4	
APVD5	

MATERIAL: M3592001 PA66 1M HS BLK

DRAWING NAME: CONN 5F M/P 280 FLXK SLD

DRAWING NUMBER: 12110538

SIZE: A0 SCALE: 5:1 FRAME NO: 1 OF 1 SHEET NO: 1 OF 1 REV: F5