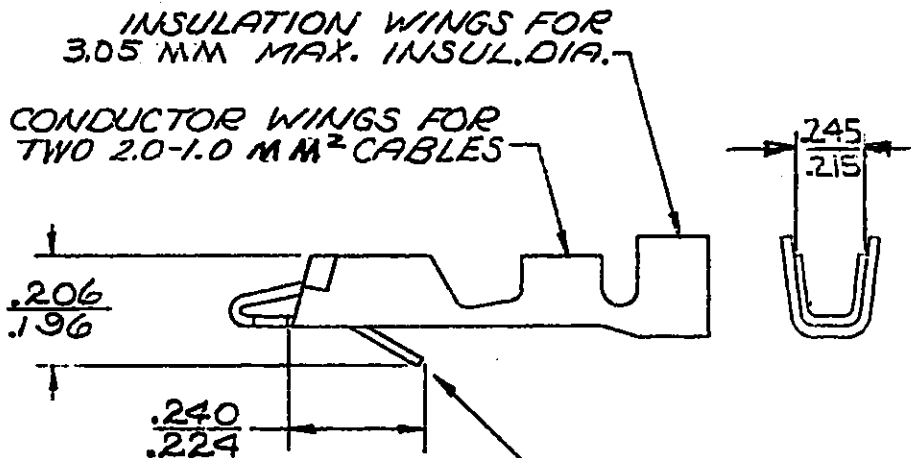
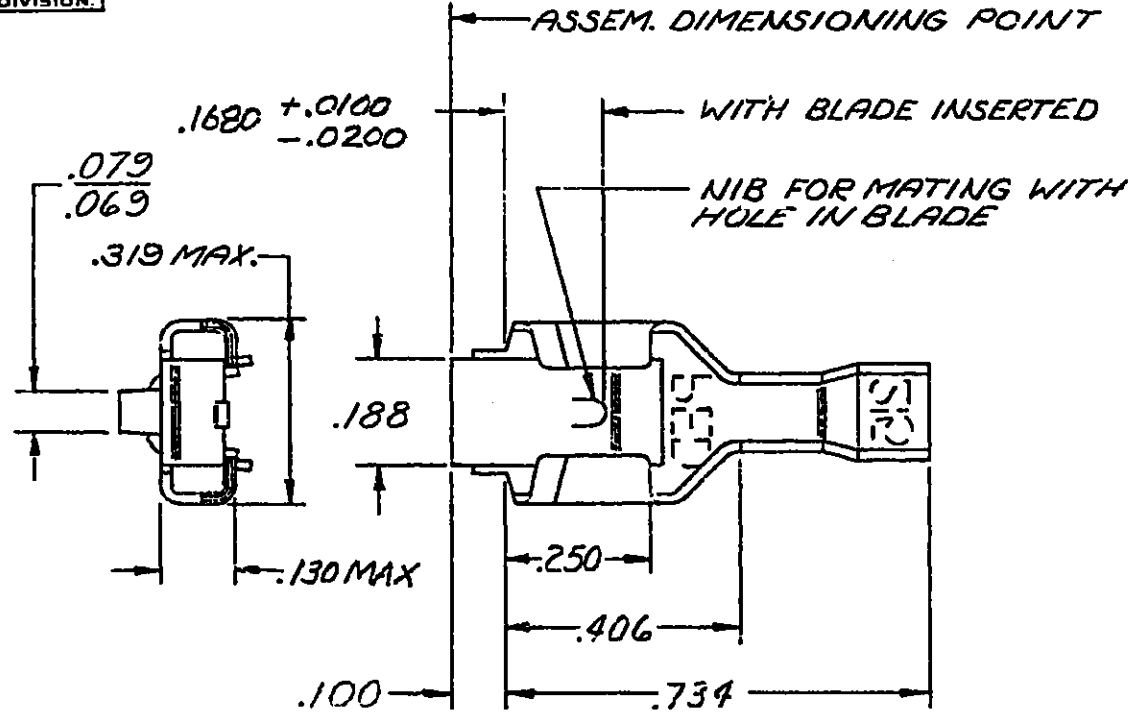


**PACKARD ELECTRIC DIVISION**  
 GENERAL MOTORS CORPORATION  
 WARREN, OHIO

**DO NOT SCALE**  
 THIS DRAWING AND DESIGN HEREON CONSTITUTES A PROPRIETARY DESIGN OF PACKARD ELECTRIC DIVISION AND IS NOT TO BE DUPLICATED OR REPRODUCED WITHOUT AUTHORITY OF PACKARD ELECTRIC DIVISION.



NOTE — TO FIT .032 x .250 BLADE.

**- OUTLINE DRAWING -**

PART NO. **2962683** SIZE **A**

DATE	SYM	REVISION RECORD	C/N NO.
24MR83	-	ALL PREVIOUS DATA REMOVED FROM REV. COLUMN THRU REV. "CD"	
		- WAS SHOWN ON 2962874 SHT #1.	83007
23AU93	-	REVISED	157111
23AU93	-	REVISED	157151
10AU06	-	UPDATED PDM ATTRIBUTES	283134
05JA07	CD	REVISED ECL TO MATCH IMS	400031

CODE NO. **6900**

TOLERANCE UNLESS OTHERWISE SPECIFIED

DECIMAL  $\pm .010$

FRACTIONAL  $\pm$

ANGULAR  $\pm$

DWG. DATE 5-10-55 | SCALE NONE | DR. PLYLER

ROUTING

DEPT

OUTST.

REFERENCE **2962874-D SHEET #3**

CHK. *Downs* 2-16-60

APPR. *Downs* 2-16

APPR. *R.C. Kirk* 2-23

MATERIAL SPEC. **.0180 THK SAE CA 260 BRASS 1/2 HARD**

CODE NO.

NAME **TERMINAL-FEMALE-56 SERIES**

PART NO. **2962683** SIZE **A**