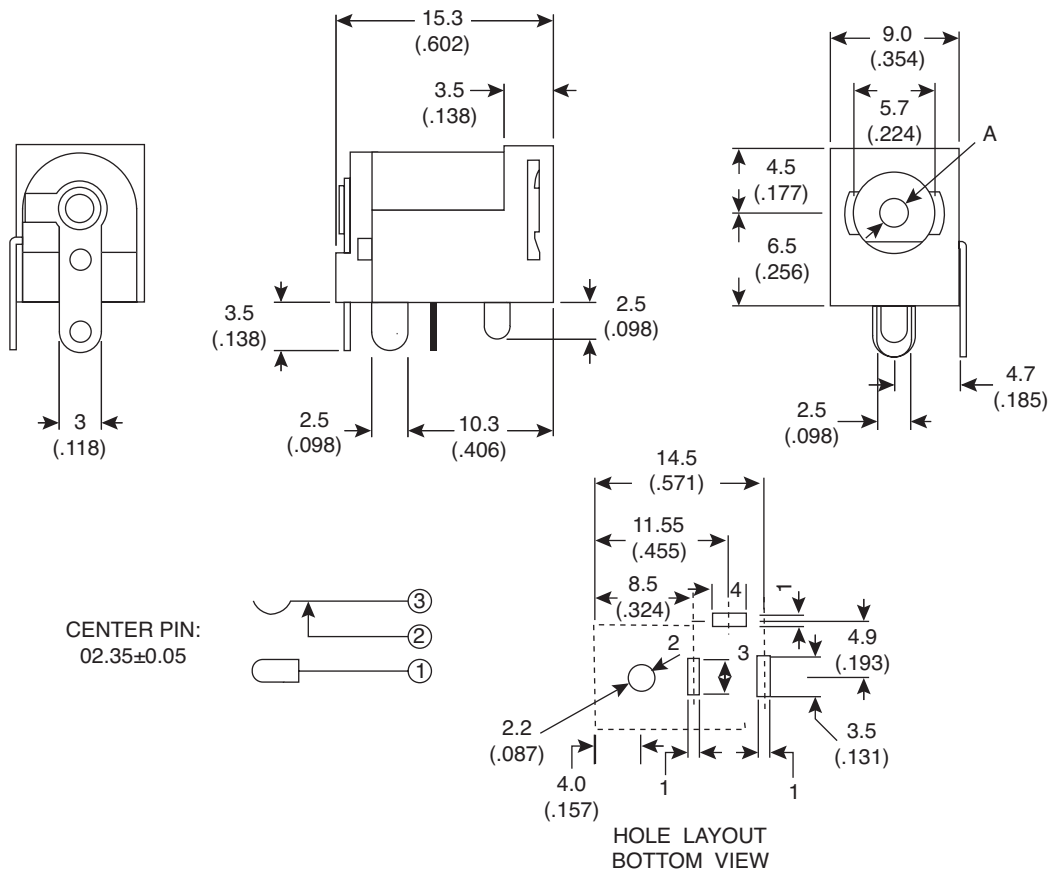


# Lockable DC Jack

161-0725-E



Lockable DC Jack



Dimensions: mm and (In.)

| SPECIFICATIONS                |                     |
|-------------------------------|---------------------|
| <b>Rating:</b>                | DC 18V 1.5A         |
| <b>Contact resistance:</b>    | 30mΩ max            |
| <b>Insulation resistance:</b> | 500VDC / 100Ω min   |
| <b>Withstand voltage:</b>     | 500VAC 1 minute     |
| <b>Body:</b>                  | Poly carbamate      |
| <b>Insulator:</b>             | Poly carbamate      |
| <b>Terminal A:</b>            | Tin plated brass    |
| <b>Terminal B:</b>            | Tin plated brass    |
| <b>Contact spring:</b>        | Tin plated copper   |
| <b>Pin:</b>                   | Nickel plated brass |
| <b>Tolerance:</b>             | 0.3mm               |
| <b>RoHS Compliant</b>         |                     |

Use with standard DC power plugs and the locking detent DC power plugs 171-0725-EX, 171-0726-EX

Date Last Revised: 8-23-06

Available from Mouser Electronics  
1-800-346-6873  
www.mouser.com

KC- 300861

161-0725-E